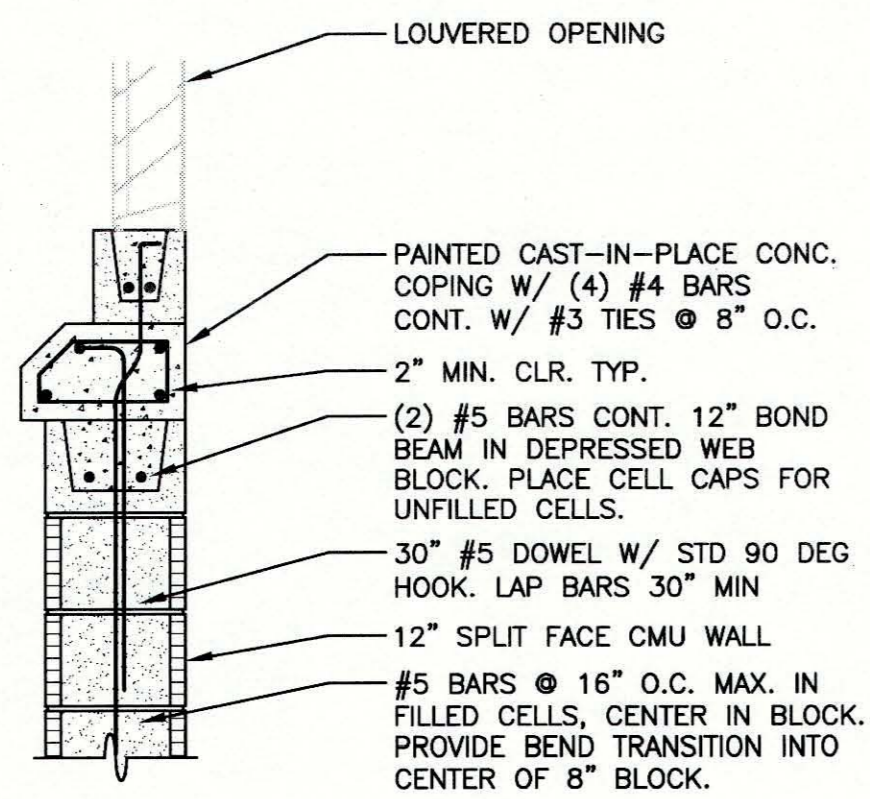
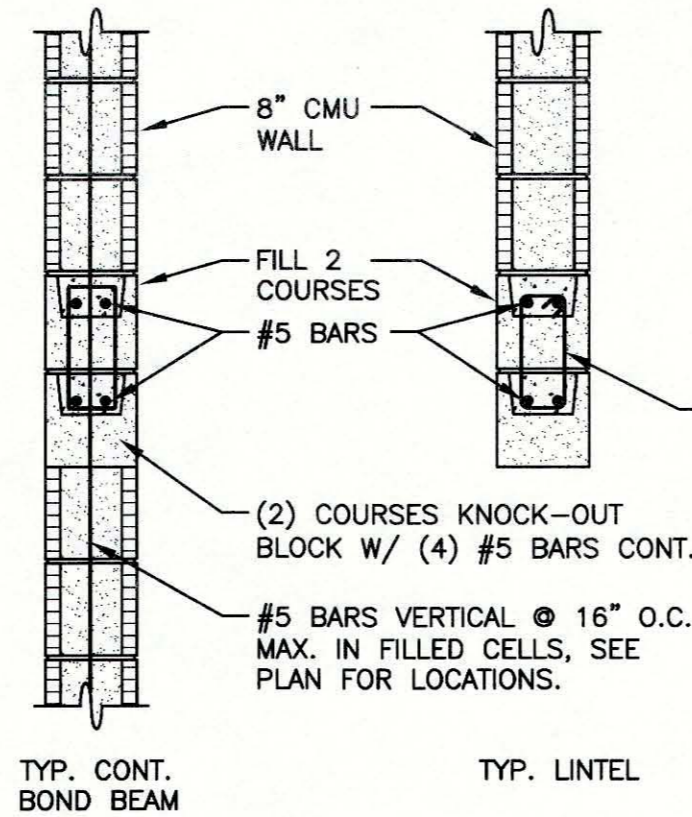


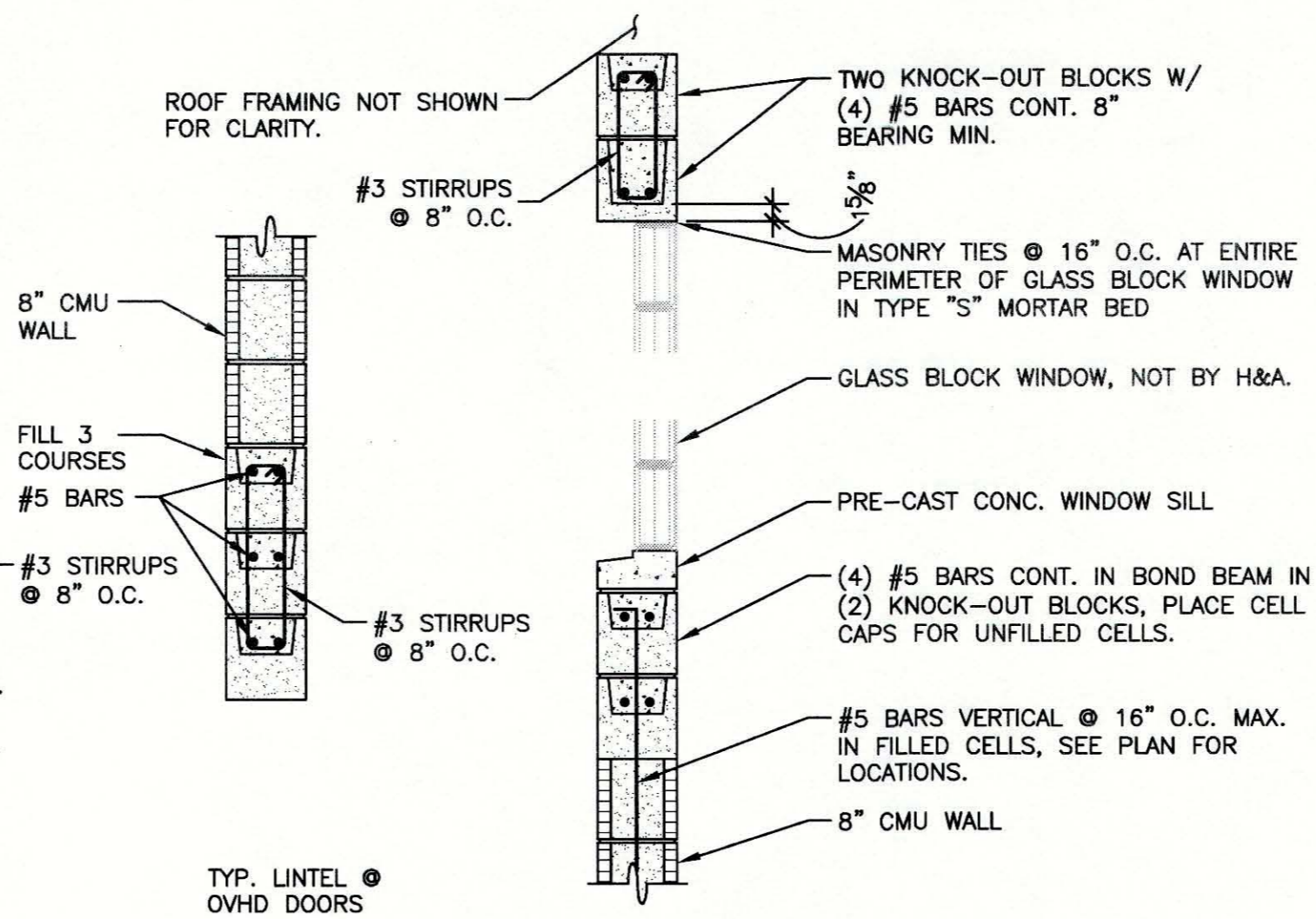
1 SECTION
SCALE: 3/4"=1'-0"



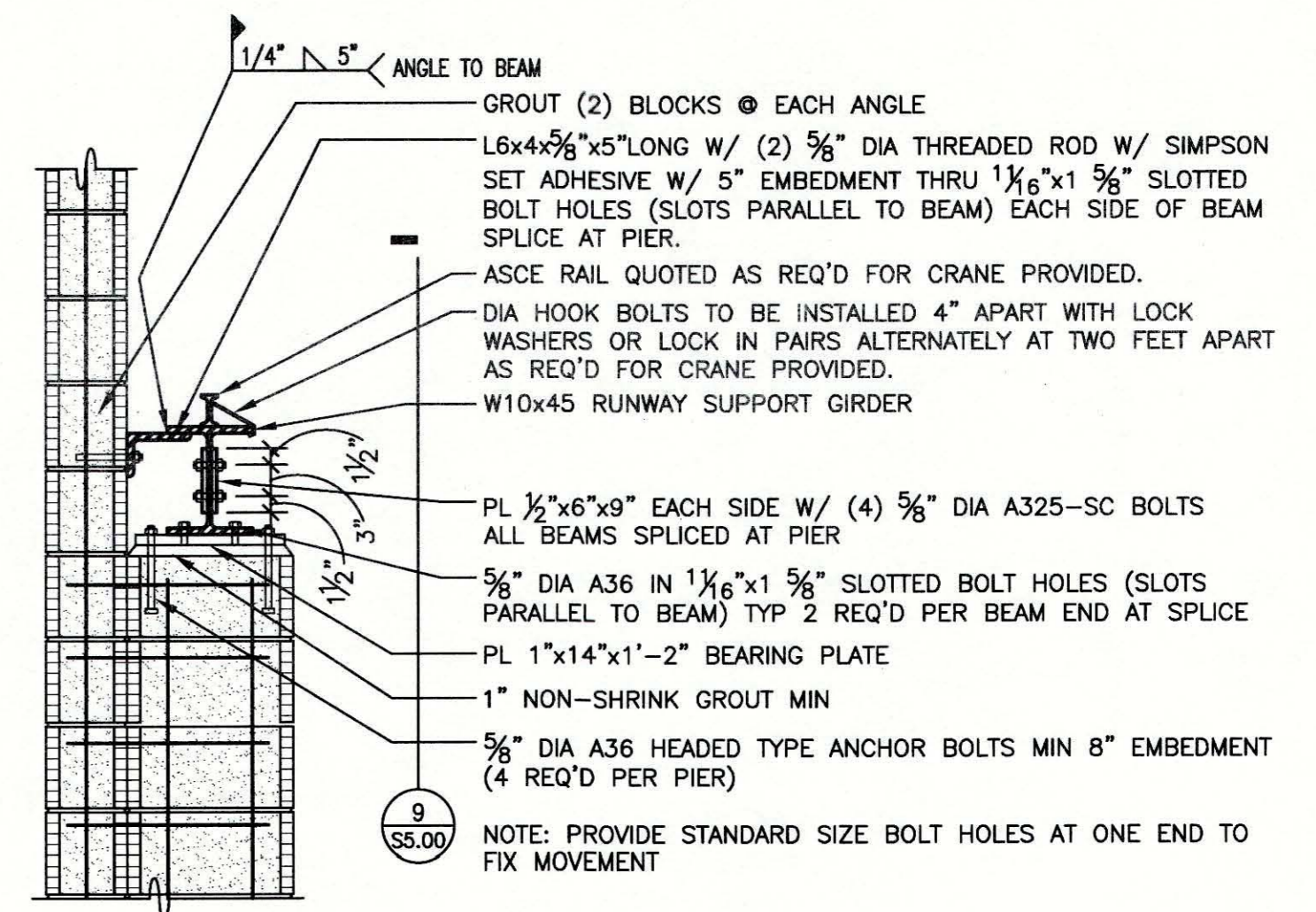
2 SECTION
SCALE: 3/4"=1'-0"



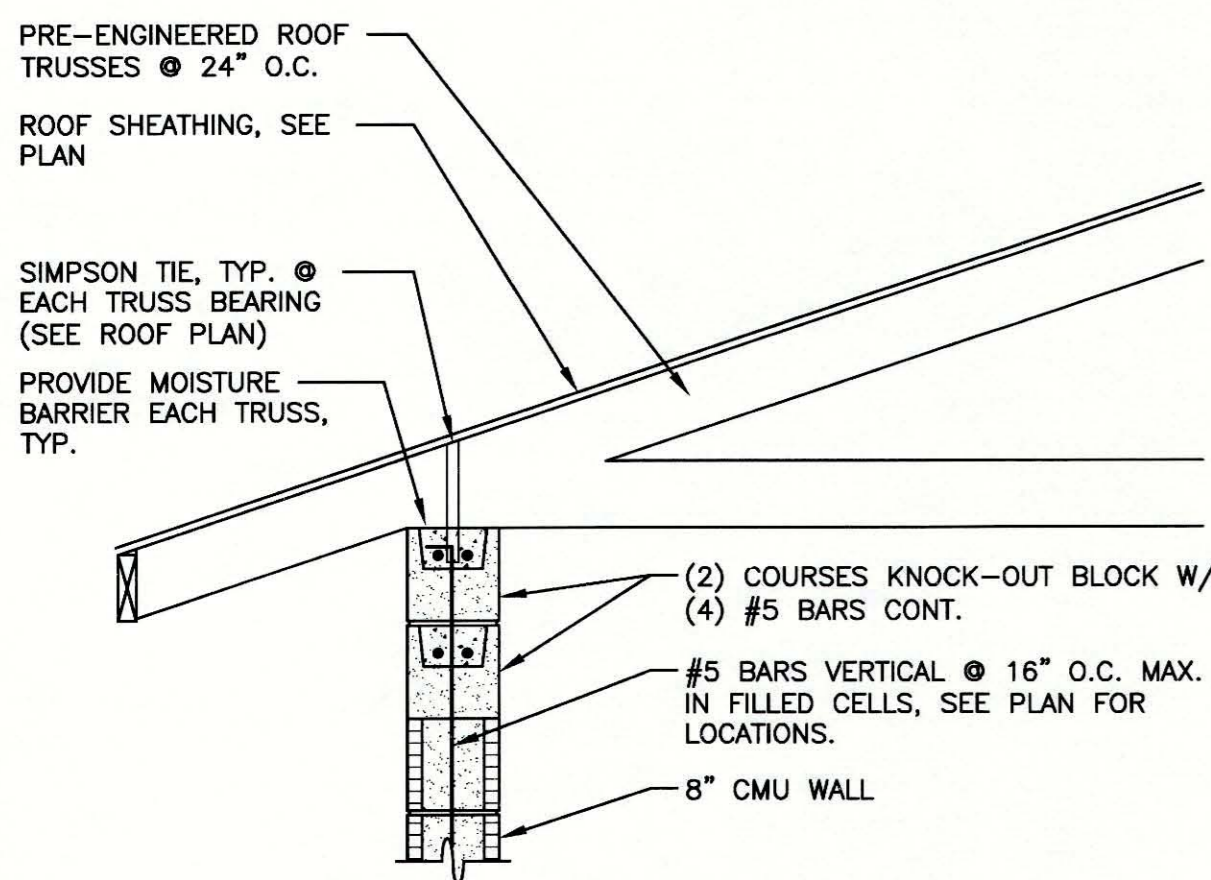
3 SECTION
SCALE: 3/4"=1'-0"



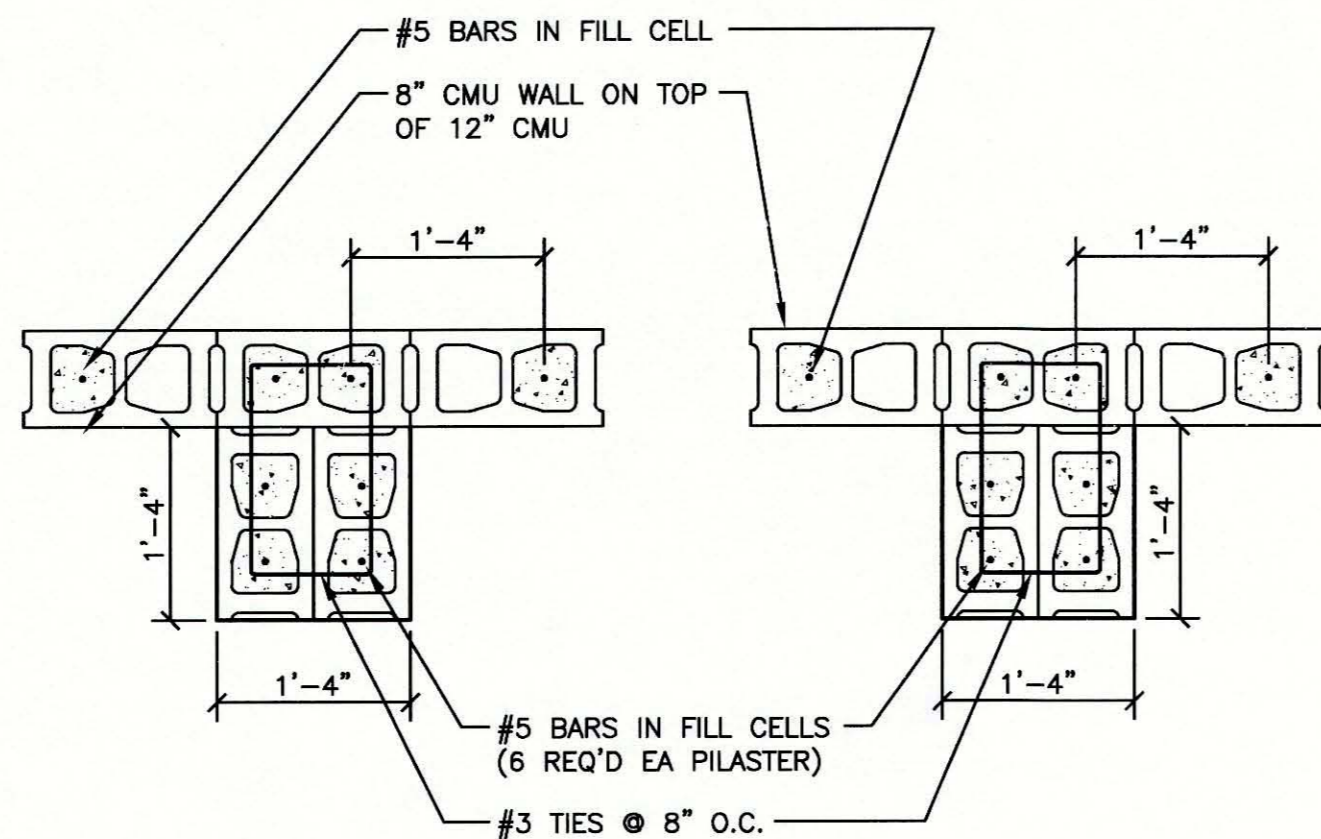
4 SECTION
SCALE: 3/4"=1'-0"



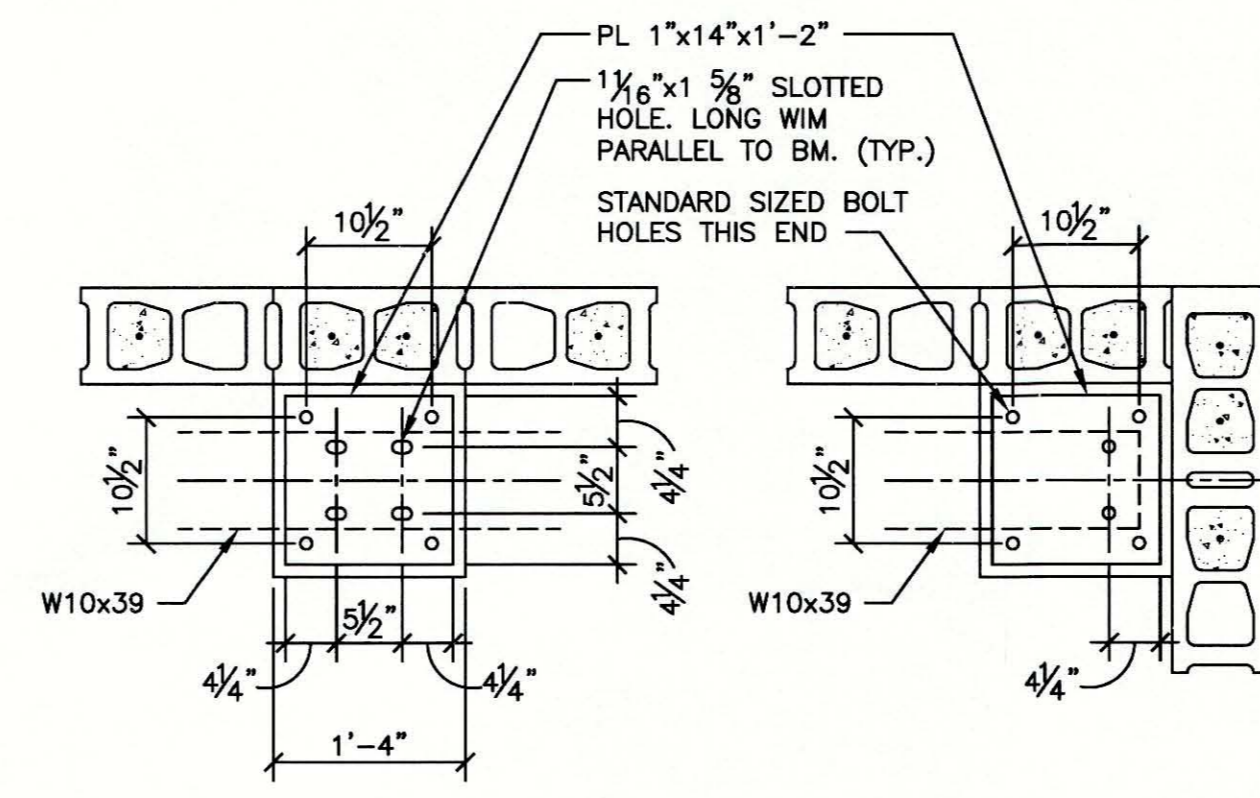
5 SECTION
SCALE: 3/4"=1'-0"



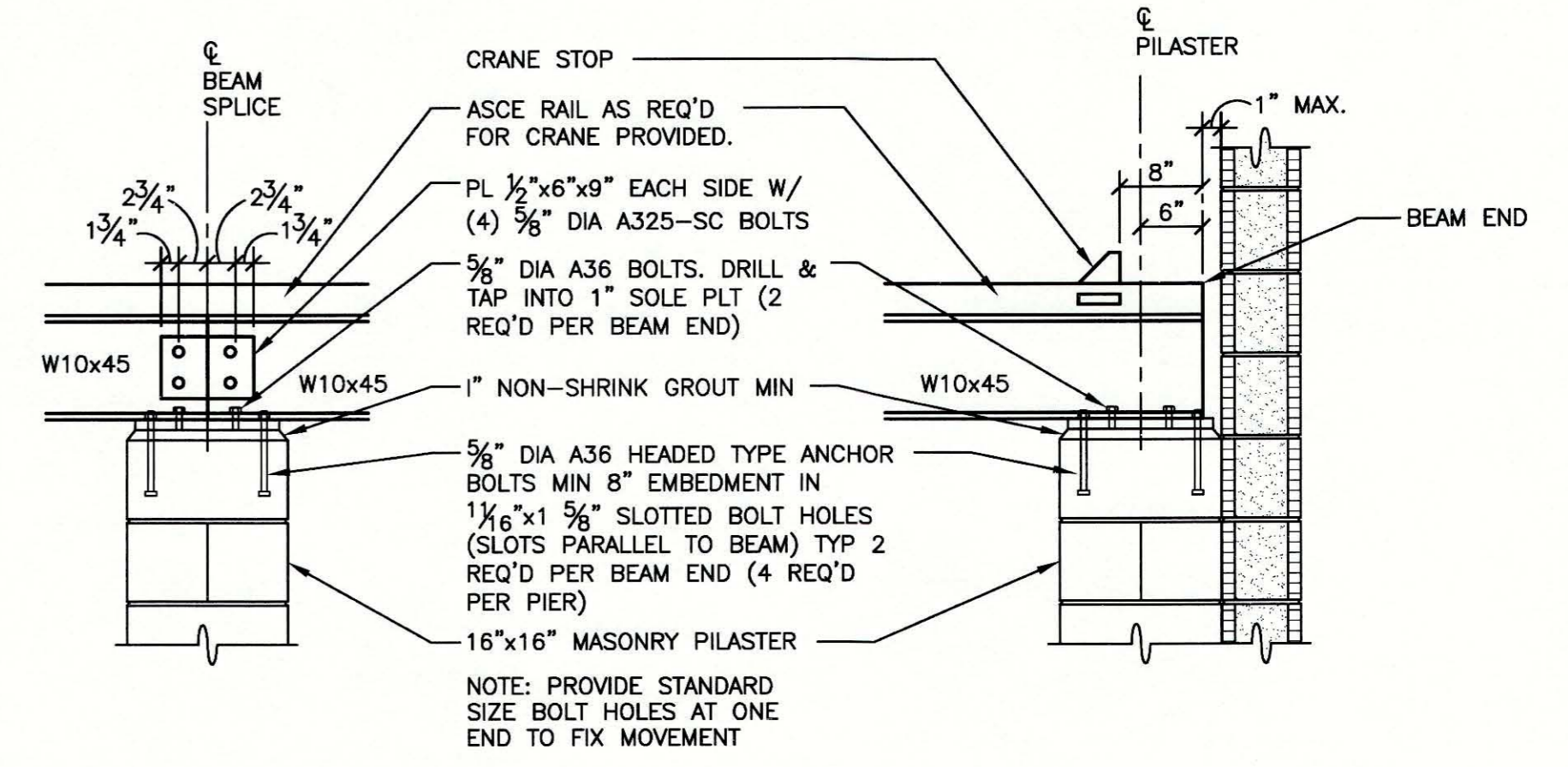
6 SECTION
SCALE: 3/4"=1'-0"



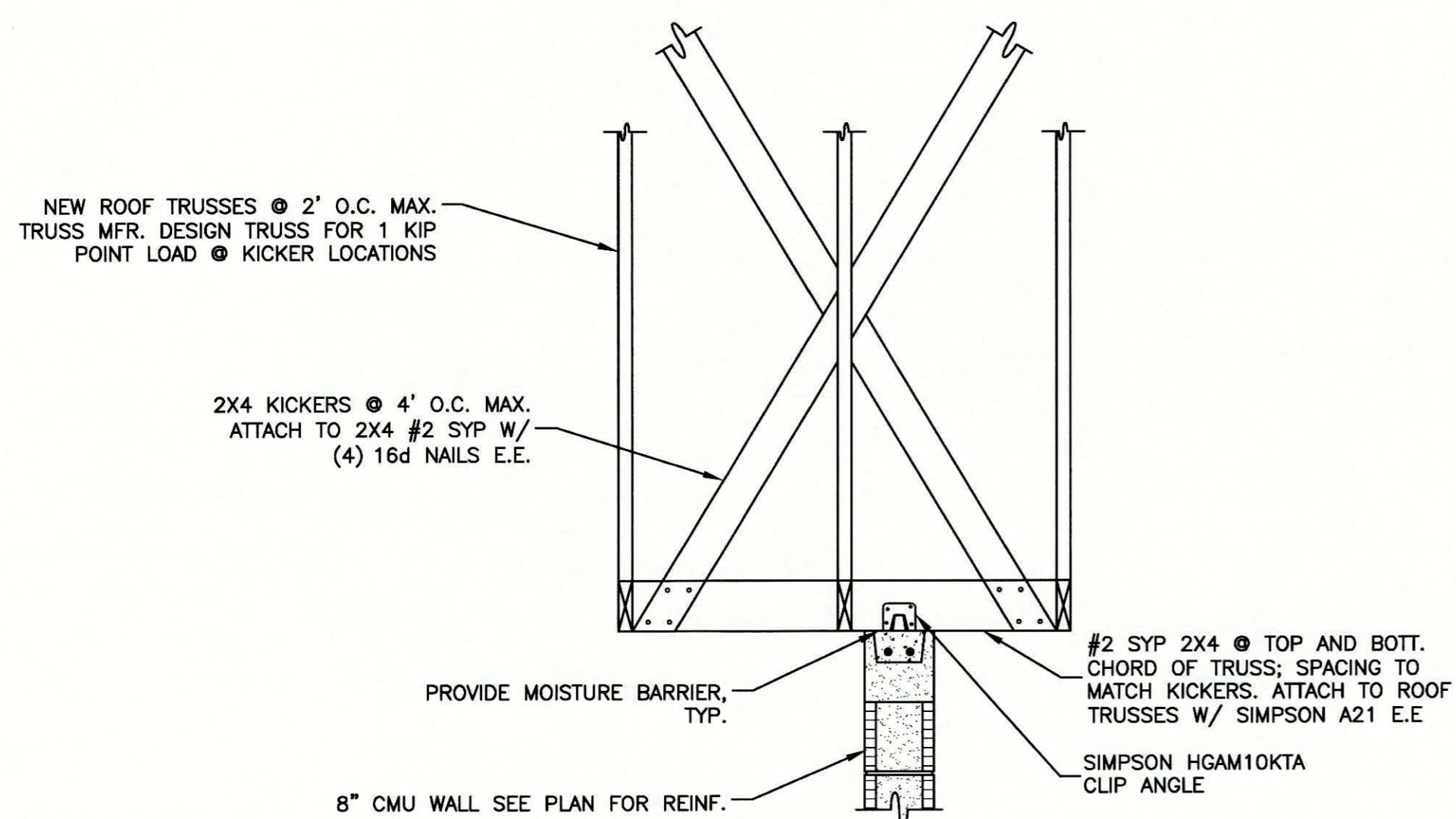
7 SECTION
SCALE: 3/4"=1'-0"



8 SECTION
SCALE: 3/4"=1'-0"



9 SECTION
SCALE: 3/4"=1'-0"



10 SECTION
SCALE: 3/4"=1'-0"



15HA003

HEES & ASSOCIATES, INC.
1381 Fifth Street - Sarasota, Florida 34236
Telephone: (941) 955-4555 • Fax: (941) 955-9333
karl@heesassociates.com • www.heesassociates.com
C.O.A. #27043 © 2015 - Hees & Associates, Inc.
All rights reserved.



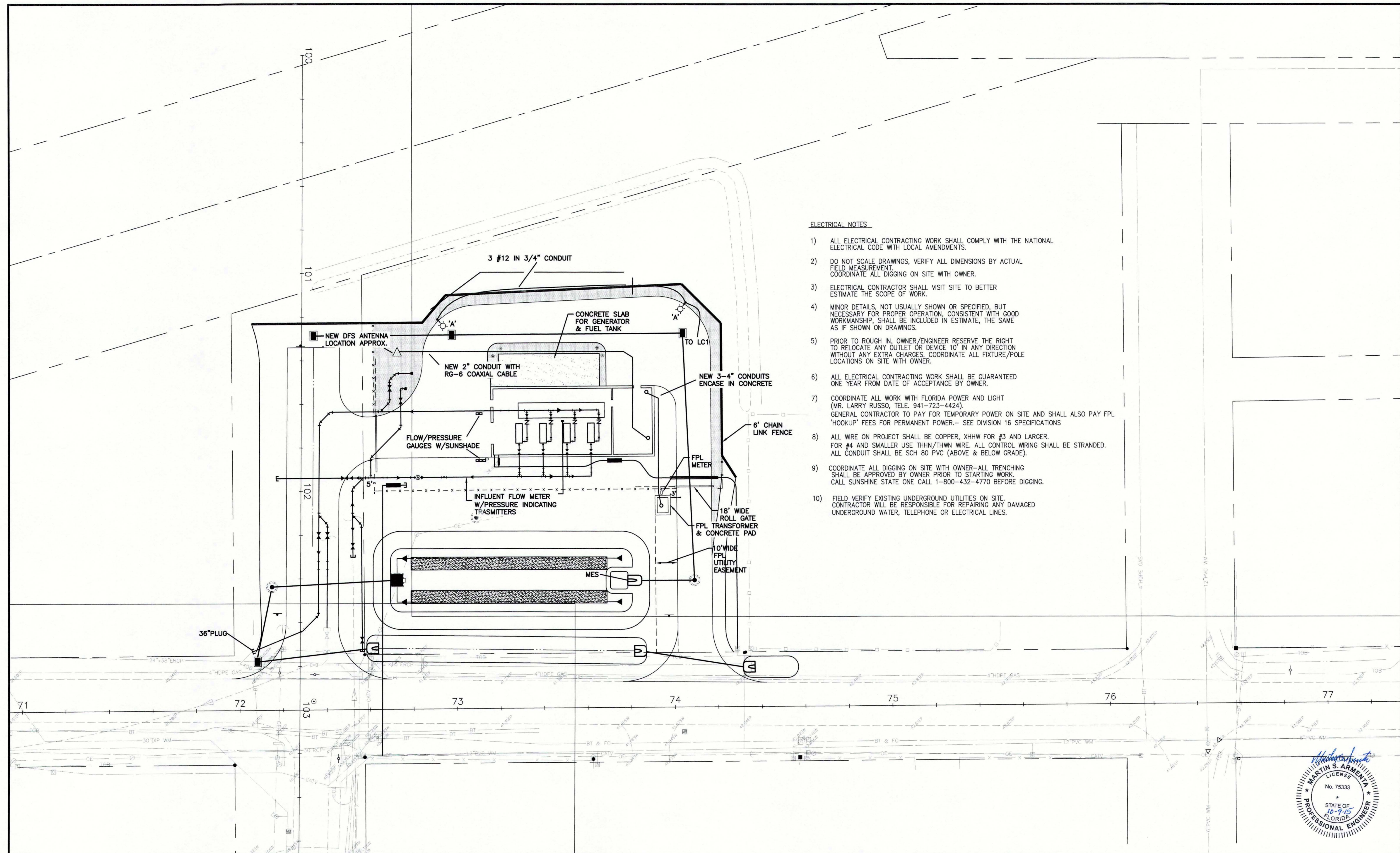
"To the best of the Architect's or Engineer's knowledge, the plans and specifications comply with the applicable minimum building codes and applicable fire safety standards as determined by local authority in accordance with Chapter 653 and 663 of Florida Statutes."

CONSTRUCTION DOCUMENTS

S5.00

TO THE BEST OF THE ENGINEER-OF-RECORD'S KNOWLEDGE AND ABILITY, THE COMPLETED STRUCTURE DEPICTED ON THESE DOCUMENTS COMPLIES WITH THE APPLICABLE MINIMUM BUILDING CODES.

NOTE:
DO NOT SCALE OFF OF THESE DRAWINGS. LAYOUT THE BUILDING USING ALL APPLICABLE CONTRACT DRAWINGS, BUILDING DIMENSIONS AND THE LOCATION OF ALL STRUCTURAL ELEMENTS INCLUDING BUT NOT LIMITED TO SLAB EDGES, WALLS, COLUMNS, OPENINGS AND DEPRESSIONS SHALL BE COORDINATED WITH THE ARCHITECTURAL DRAWINGS PRIOR TO LAYOUT OF THE BUILDING. RESOLVE ANY DISCREPANCIES.



ELECTRICAL NOTES

- 1) ALL ELECTRICAL CONTRACTING WORK SHALL COMPLY WITH THE NATIONAL ELECTRICAL CODE WITH LOCAL AMENDMENTS.
- 2) DO NOT SCALE DRAWINGS, VERIFY ALL DIMENSIONS BY ACTUAL FIELD MEASUREMENT. COORDINATE ALL DIGGING ON SITE WITH OWNER.
- 3) ELECTRICAL CONTRACTOR SHALL VISIT SITE TO BETTER ESTIMATE THE SCOPE OF WORK.
- 4) MINOR DETAILS, NOT USUALLY SHOWN OR SPECIFIED, BUT NECESSARY FOR PROPER OPERATION, CONSISTENT WITH GOOD WORKMANSHIP, SHALL BE INCLUDED IN ESTIMATE, THE SAME AS IF SHOWN ON DRAWINGS.
- 5) PRIOR TO ROUGH IN, OWNER/ENGINEER RESERVE THE RIGHT TO RELOCATE ANY OUTLET OR DEVICE 10' IN ANY DIRECTION WITHOUT ANY EXTRA CHARGES. COORDINATE ALL FIXTURE/POLE LOCATIONS ON SITE WITH OWNER.
- 6) ALL ELECTRICAL CONTRACTING WORK SHALL BE GUARANTEED ONE YEAR FROM DATE OF ACCEPTANCE BY OWNER.
- 7) COORDINATE ALL WORK WITH FLORIDA POWER AND LIGHT (MR. LARRY RUSSO, TELE. 941-723-4424). GENERAL CONTRACTOR TO PAY FOR TEMPORARY POWER ON SITE AND SHALL ALSO PAY FPL 'HOOK-UP' FEES FOR PERMANENT POWER.- SEE DIVISION 16 SPECIFICATIONS
- 8) ALL WIRE ON PROJECT SHALL BE COPPER, XHHW FOR #3 AND LARGER. FOR #4 AND SMALLER USE THHN/THWN WIRE. ALL CONTROL WIRING SHALL BE STRANDED. ALL CONDUIT SHALL BE SCH 80 PVC (ABOVE & BELOW GRADE).
- 9) COORDINATE ALL DIGGING ON SITE WITH OWNER-ALL TRENCHING SHALL BE APPROVED BY OWNER PRIOR TO STARTING WORK. CALL SUNSHINE STATE ONE CALL 1-800-432-4770 BEFORE DIGGING.
- 10) FIELD VERIFY EXISTING UNDERGROUND UTILITIES ON SITE. CONTRACTOR WILL BE RESPONSIBLE FOR REPAIRING ANY DAMAGED UNDERGROUND WATER, TELEPHONE OR ELECTRICAL LINES.



Stantec Stantec Consulting Services Inc. • 5172 Station Way, Sarasota, FL 34233 Tel. 941.366.1922 • Fax. 941.225.6182 • Florida Certificate No. 27013 • www.stantec.com				CLIENT: MANATEE COUNTY PUBLIC WORKS PROJECT: VILLAGE OF PARRISH MASTER PUMP STATION	DATE: AUGUST 2015 HORIZONTAL SCALE: 1"=4' VERTICAL SCALE: 1"=4' SEC. TWP. RGE: 30 29 19	TITLE: ELECTRICAL SITE PLAN PROJECT NUMBER: 177310561 SHEET NUMBER: E2 OF 17	MARTIN S. ARMENTA, P.E. FLORIDA LICENSE NO. 75333 INDEX NUMBER: D-05925-001-0000E1
A UPDATE DESIGN/CODE UPDATES FOR REPERMITTING 08/13/15 KG	DESIGNED BY: JN DRAWN BY: BB CHECKED BY: MA CONTRACT ADMIN. BY:	INITIALS/EMP. NO. DATE JN JULY 2015 BB JULY 2015 MA JULY 2015	ACTIVITY WM APPROVED BY:				

FURNISH & INSTALL NEW 750KW DIESEL GENERATOR, W/1200AMP MAIN LINE CIRCUIT BREAKER, 480V, 3 PHASE, 4 WIRE WITH 4000 GAL. DOUBLE WALL FUEL TANK WITH CRITICAL MUFFLER- CUMMINS OR APPROVED EQUIVALENT
208 VOLT JACKET HEATER, 208V, 18
120 VOLT BATTERY CHARGER, ALUMINUM SOUND ATTENUATED WEATHER PROOF ENCLOSURE- 140 MPH RATED (SEE SPECIFICATIONS)

FUEL TANK SHALL COMPLY WITH ALL UL AND FLORIDA DEP REQUIREMENTS AT TIME OF INSTALLATION
PROVIDE FULL FUEL TANK AT COMPLETION OF PROJECT-SEE SPECS

NOTE- THE GENERATOR HAS BEEN SIZED BASED ON OPERATING THREE (3) 200 HP VFD PUMPS. THE FOURTH PUMP IS SPARE (STANDBY).

LOAD	HP	KVA
PUMP 1	200	199.5 (DUTY)
PUMP 2	200	199.5 (DUTY)
EF-1	5	6.3
CRANE	-	8.3
PANEL L1	-	25.0
25% OF LARGEST MOTOR	-	49.9
		488.5

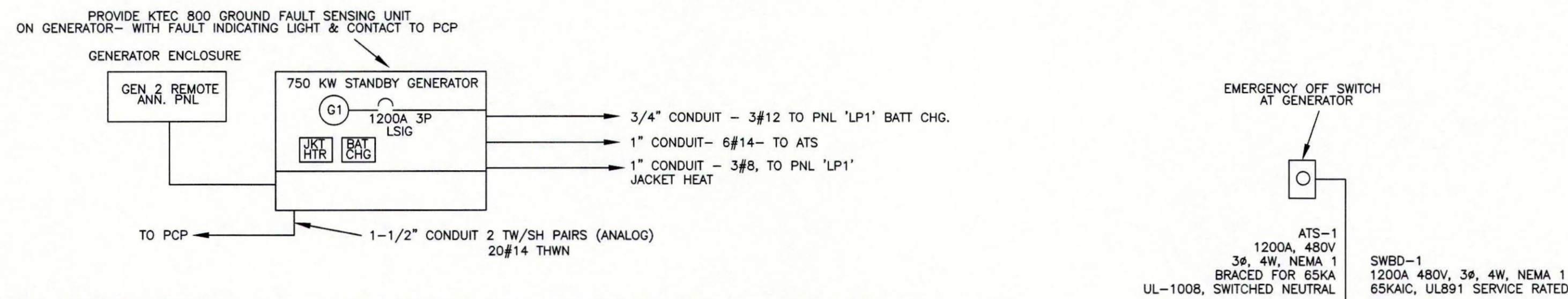
@480V 588A

LOAD CALCULATION - INITIAL

LOAD	HP	KVA
PUMP 1	200	199.5 (DUTY)
PUMP 2	200	199.5 (DUTY)
PUMP 3	200	199.5 (DUTY)
PUMP 4	200'	- (STANDBY)
EF-1	5	6.3
CRANE	-	8.3
PANEL L1	-	25.0
25% OF LARGEST MOTOR	-	49.9
		688.5

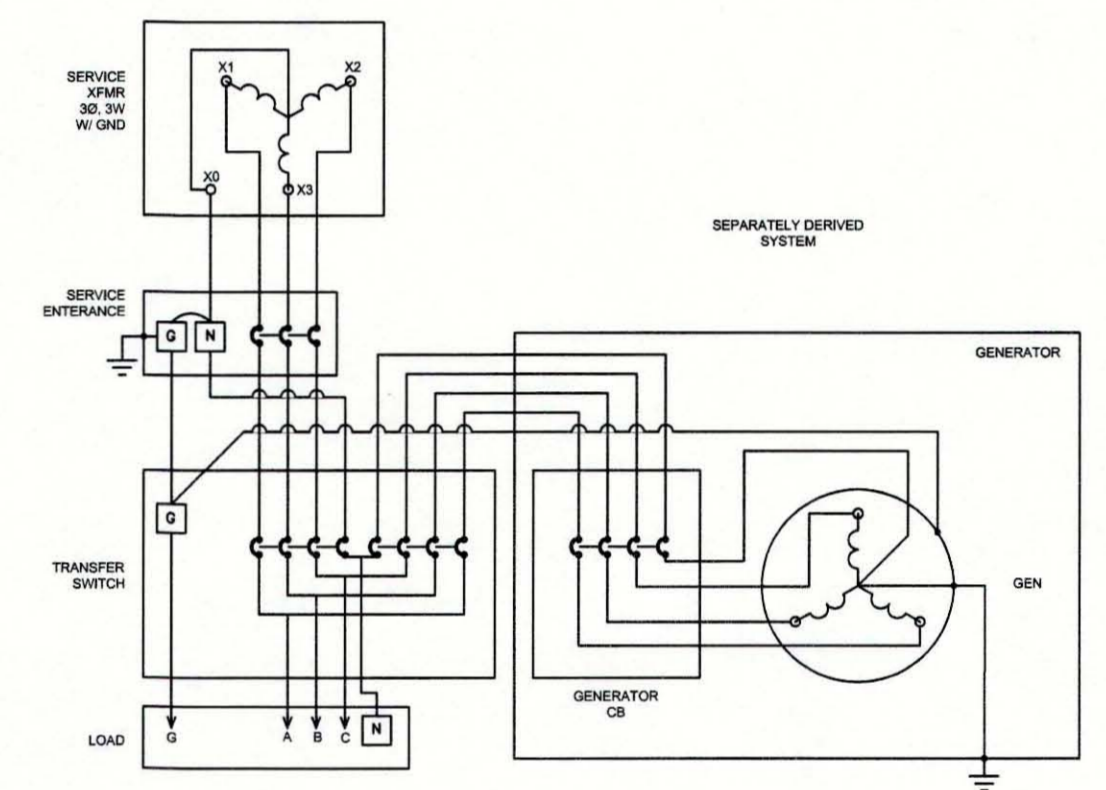
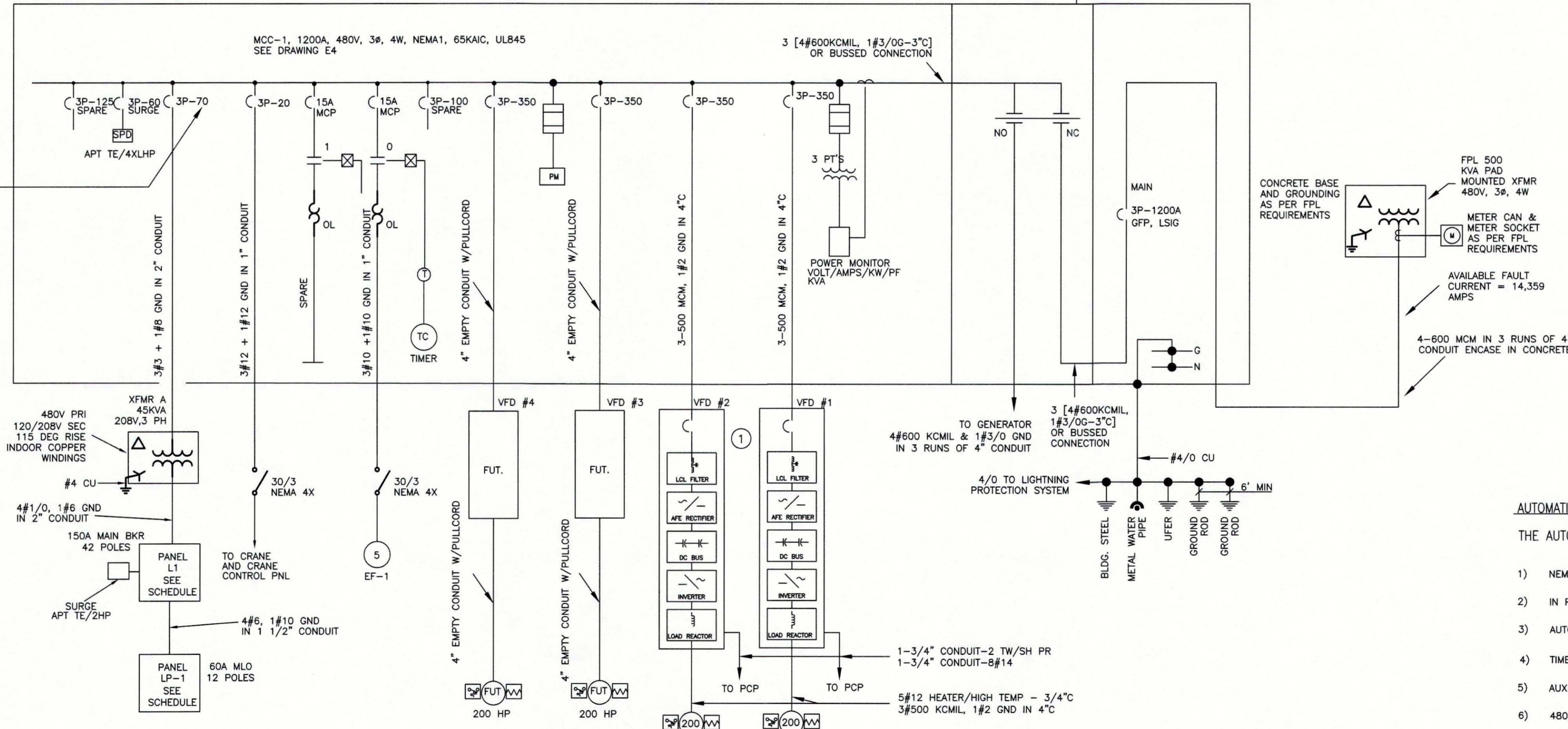
@480V 828A

LOAD CALCULATION - FUTURE



BREAKER MANUFACTURER TO PROVIDE SELECTIVE COORDINATION BETWEEN THE TRANSFORMER FEEDER BREAKER AND THE 45 KVA TRANSFORMER INRUSH CURRENT. FURNISH & INSTALL A BREAKER OF SIZE & FRAME TYPE TO PREVENT NUISANCE TRIPS

PROVIDE IN BID THREE (3) SQUARE D 200 AMP JG 3 POLE BREAKERS FOR FUTURE USE



NEUTRAL BONDING DIAGRAM

SCALE: NO SCALE

AUTOMATIC TRANSFER SWITCH NOTE

THE AUTOMATIC TRANSFER SWITCH SHALL BE EQUIPPED AS FOLLOWS :

- 1) NEMA 1 ENCLOSURE
- 2) IN PHASE MONITOR
- 3) AUTOMATIC EXERCISER
- 4) TIME DELAY FOR ENGINE START & ENGINE COOL DOWN.
- 5) AUXILIARY CONTACTS & PILOT LIGHTS
- 6) 480/277 VOLTS, 3Ø, 4 WIRE- 4 POLE SWITCH, 1200 AMPS
- 7) PROVIDE A GUARDED, NEMA 1 GENERATOR EMERGENCY SHUTDOWN SWITCH AT GENERATOR ENCLOSURE
- 8) 16 LIGHT REMOTE ANNUNCIATOR IN ELECTRICAL ROOM
- 9) CONNECT GENERATOR CONTROLS TO DATAFLOW PLC- "HARDWARE" CONNECTIONS
- 10) PROVIDE MANUAL BYPASS OPTION

KEYED NOTES

- 1) PROVIDE A POWER CONDUCTOR (3#500KCMIL, 1#2GND) THAT MEETS THE REQUIREMENTS OF THE ABB ACS800 USER MANUAL. OBTAIN A COPY AND CAREFULLY READ IT.

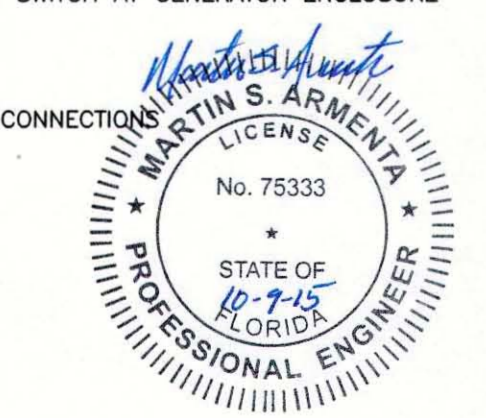
ONE LINE DIAGRAM

REV NO.	REVISION	DATE	DRAWN BY / EMP. NO.	CHECKED BY / EMP. NO.	WM APPROVED BY:	ACTIVITY	INITIALS/EMP. NO.	DATE
A	UPDATE DESIGN/CODE UPDATES FOR REPERMITTING	08/13/15	KG					



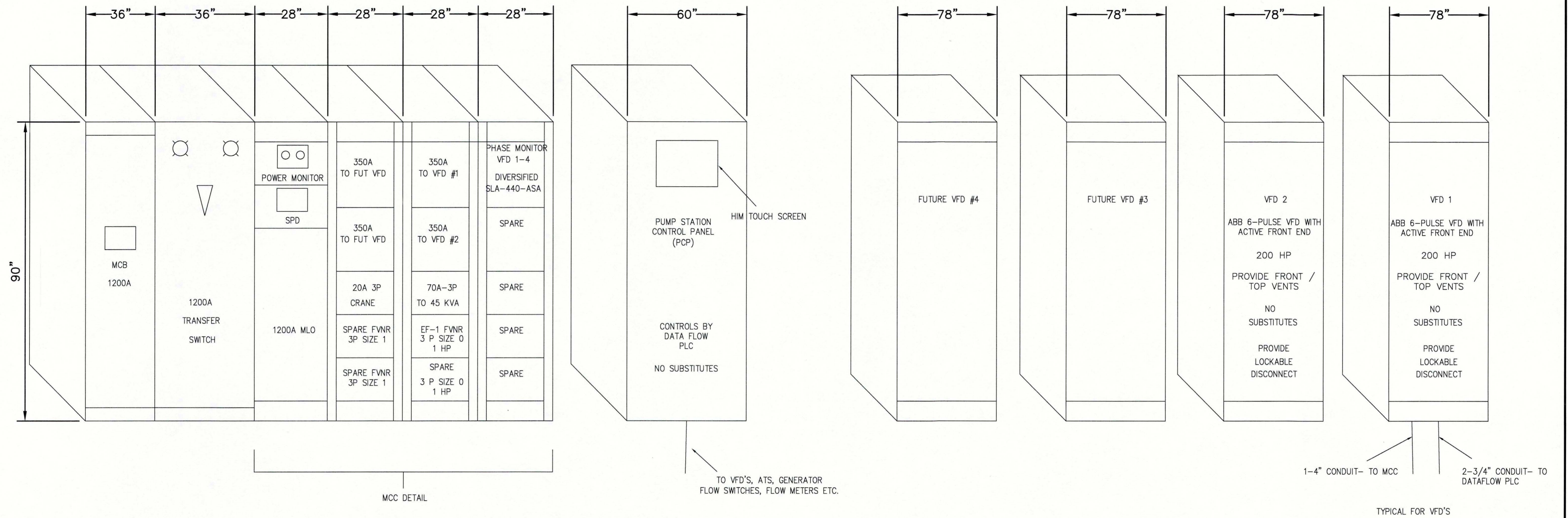
Stantec Consulting Services Inc. • 5172 Station Way, Sarasota, FL 34233
Tel. 941.366.1922 • Fax. 941.225.6182 • Florida Certificate No. 27013 • www.stantec.com

CLIENT:	MANATEE COUNTY PUBLIC WORKS	DATE:	AUGUST 2015	TITLE:	ONE LINE DIAGRAM
PROJECT:	VILLAGE OF PARRISH MASTER PUMP STATION	HORIZONTAL SCALE:	1"=4'	INDEX NUMBER:	D-05925-001-0000E1
		VERTICAL SCALE:	1"=4'	SHEET NUMBER:	E3 OF 17
		SEC. TWP. RGE:	30 33 19	CROSS REFERENCE FILE NO.:	
				PROJECT NUMBER:	177310561



NOTES

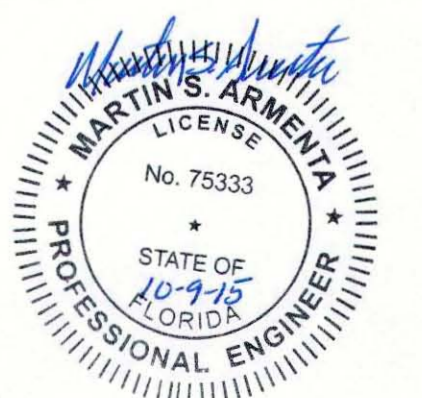
1. PROVIDE 4" HOUSEKEEPING CURB UNDER MCC, PCP, MCB, TRANSFER SWITCH, AND ALL VFD'S.



MAIN, ATS, MCC, PCP & VFD DETAILS SCHEMATIC

NO SCALE

SEE E-3 FOR EQUIPMENT LOCATIONS

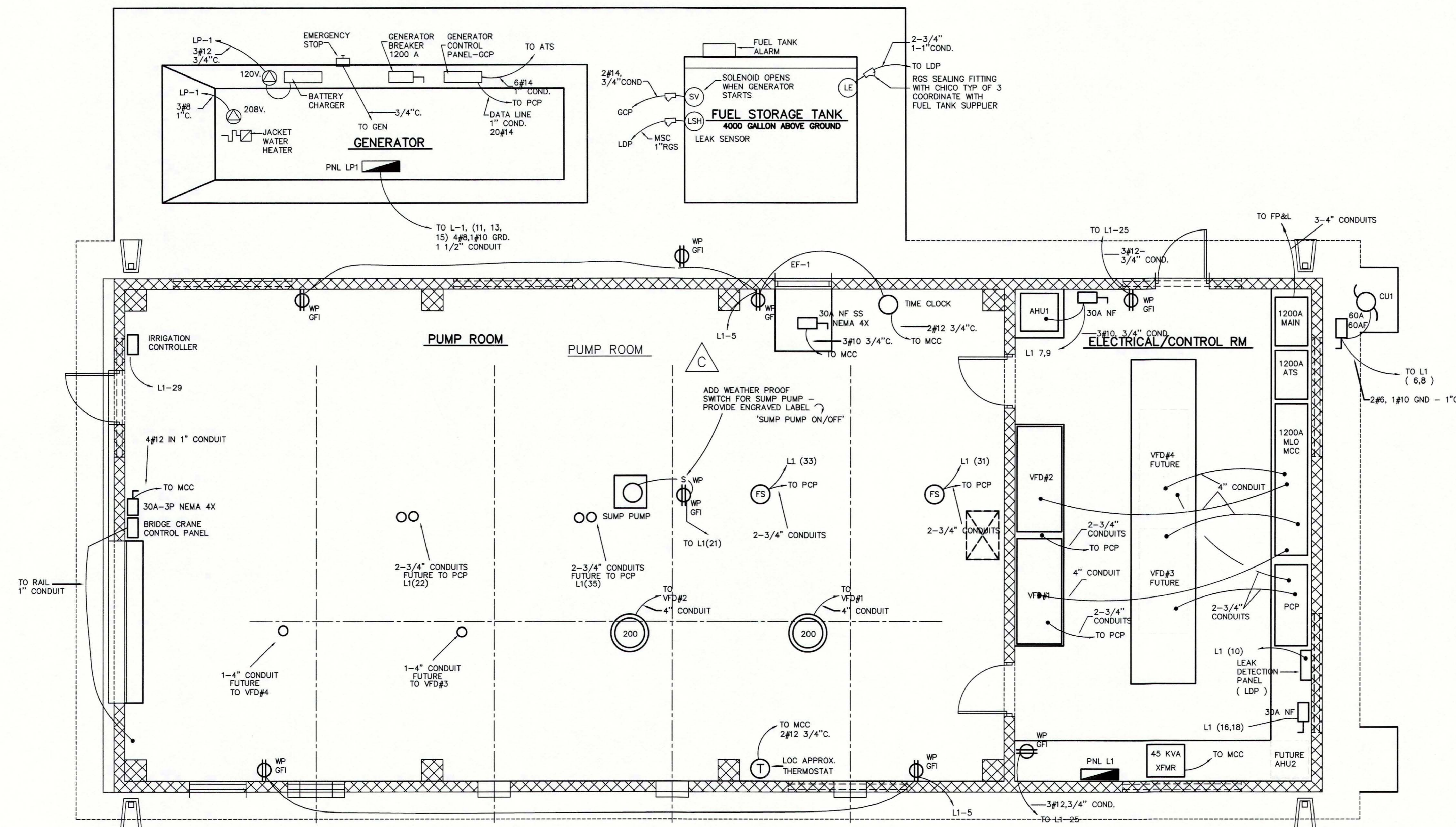


REV NO	REVISION	DATE	DRAWN BY / EMP. NO.	CHECKED BY / EMP. NO.	WM APPROVED BY:
A	UPDATE DESIGN/CODE UPDATES FOR REPERMITTING	08/13/15	KG		



Stantec Consulting Services Inc. • 5172 Station Way, Sarasota, FL 34233
Tel. 941.366.1922 • Fax. 941.225.6182 • Florida Certificate No. 27013 • www.stantec.com

CLIENT:	MANATEE COUNTY PUBLIC WORKS	DATE:	AUGUST 2015	TITLE:	MAIN, ATS, MCC, PCP & VFD DETAILS
PROJECT:	VILLAGE OF PARRISH MASTER PUMP STATION	HORIZONTAL SCALE:	1"=4'	INDEX NUMBER:	D-05925-001-0000E1
		VERTICAL SCALE:	1"=4'	CROSS REFERENCE FILE NO.:	
		SEC. TWP. RGE:	20 29 19	PROJECT NUMBER:	177310561
				SHEET NUMBER:	E4 OF 17



NEW PANEL L-1, 200A, 120/208V, THREE PHASE, 4W, 42 POLES W/ 150A MAIN BREAKER SURFACE MOUNTED LOCATED IN ELECTRICAL ROOM PROVIDE SURGE SUPPRESSOR 22,000 AIC RATING.

CIRCUIT NUMBER	DESCRIPTION	TRIP	POLES	WIRE	COND.	LOAD (KVA)
1	LIGHTING, CONTROL ROOM	20	1	2-#12, 1-#12 GND	3/4"	0.37
2	LIGHTING, PUMP ROOM	20	1	2-#12, 1-#12 GND	3/4"	0.78
3	SPARE	20	1			
4	LIGHTING, EXTERIOR	20	1	2-#12, 1-#12 GND	3/4"	0.4
5	PUMP ROOM RECEPTACLES	20	1	2-#12, 1-#12 GND	3/4"	1.1
6,8	CU-1	60	2	2-#6, 1-#10 GND	1"	8.2
7,9	AHU-1	20	2	2-#10, 1-#10G	1"	1.3
10	FUEL TANK LEVEL/LEAK MONITOR CP	20	1	2-#12, 1-#12 GND	3/4"	0.3
11,13,15	LP-1 GENERATOR	60	3	4-#6, 1-#10 GND	1 1/2"	5.0
12	PHOTO CONTACTOR	20	1	2-#12, 1-#12 GND	3/4"	0.20
14	PCP	20	1	2-#12, 1-#12 GND	3/4"	0.50
16,18	AHU-2- FUTURE	20	2	3-#10	1"	2.50
17,19	CU-2-FUTURE	60	2	2-#6, 1-#10 GND	1"	2.50
20	SPARE	20	1			
21	PMP ROOM SUMP PUMP #1	20	1	2-#12, 1-#12 GND	3/4"	1.0
22	PUMP #4 FLOW SWITCH - FUTURE	20	1	2-#12, 1-#12 GND	3/4"	0.10
23	POLE LIGHTS	20	1	2-#12, 1-#12 GND	3/4"	0.2
24	SPARE	20	1			
25	ELECTRICAL ROOM RECEPTACLES	20	1	2-#12, 1-#12 GND	3/4"	0.3
26,27	SPARE	20	1			
28	SPARE	20	1			
29	IRRIGATION CONTROLLER	20	1	2-#12, 1-#12 GND	3/4"	0.2
30,32,34	SURGE SUPPRESSOR	15	3	3-#6, 1-#6 GND	-	0.10
31	SPARE	20	1			
33	SPARE	20	1			
35	SPARE	20	1			
42	FLOW METER 1	20	1	2-#12, 1-#12 GND	-	-
TOTAL LOAD (AMPS)		25.05 KVA (120.53)		SURGE SUPPRESSOR APT TE/ZXGA		SS

NEW PANEL LP-1, 60 AMP MLO, 120/208V, THREE PHASE, 4W, 12 POLES, NEMA 3R, 10,000 AIC LOCATED AT GENERATOR

CKT. NO.	WIRE SIZE	DESCRIPTION	BREAKERS			BREAKERS			DESCRIPTION	WIRE SIZE	CKT. NO.	
			POLE	AMP	AMP	AMP	POLE	AMP				
1	8	JACKET HEATER	2	40	16	-	10	20	1	BATTERY CHARGER	12	2
3	8	JACKET HEATER	-	-	-	16	-	20	1	SPARE	-	4
5	6	SPARE	1	40	-	-	-	20	1	SPARE	12	6
7	-	-	-	-	-	-	-	50	2	SURGE	8	8
9	-	-	-	-	-	-	-	-	-	-	8	10
11	-	-	-	-	-	-	-	-	-	-	-	12
TOTAL LOAD		8729.28 VA										

POWER PLAN
SCALE: 1/4" = 1'-0"

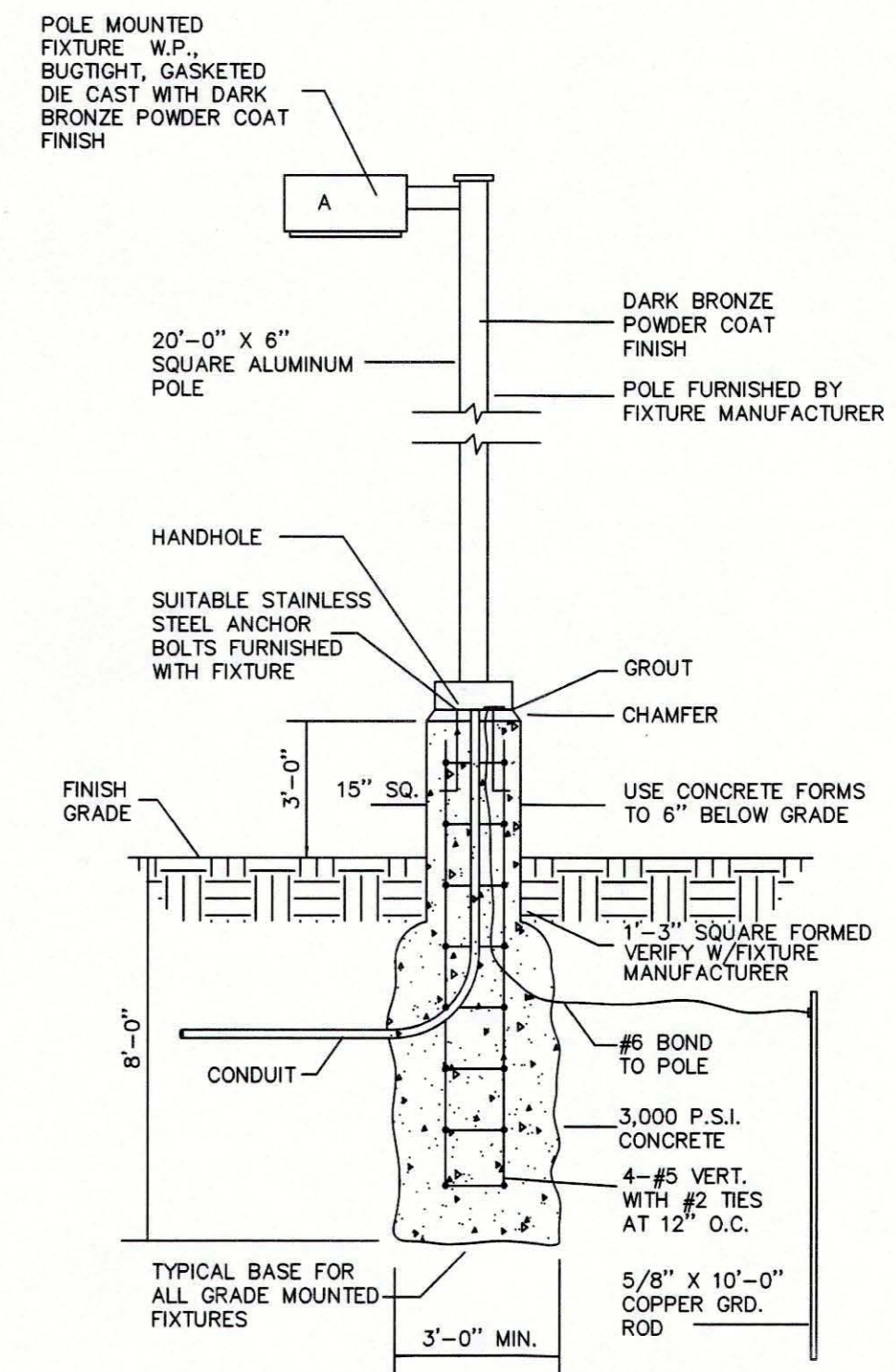
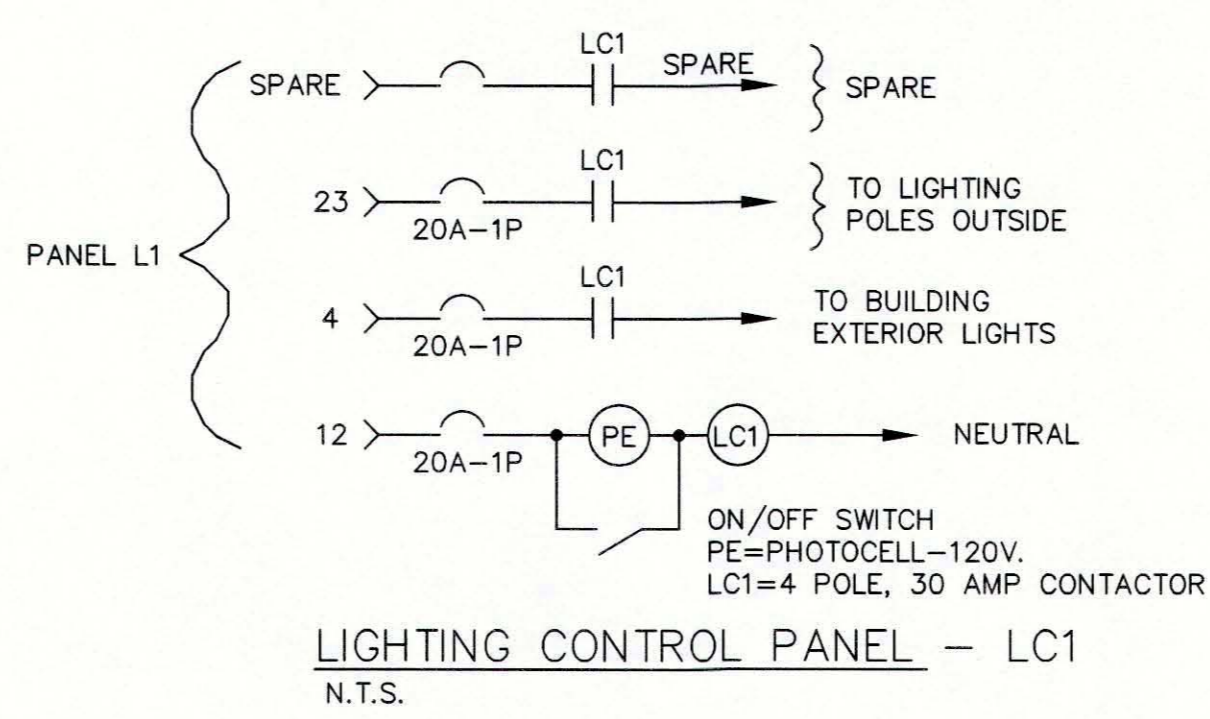
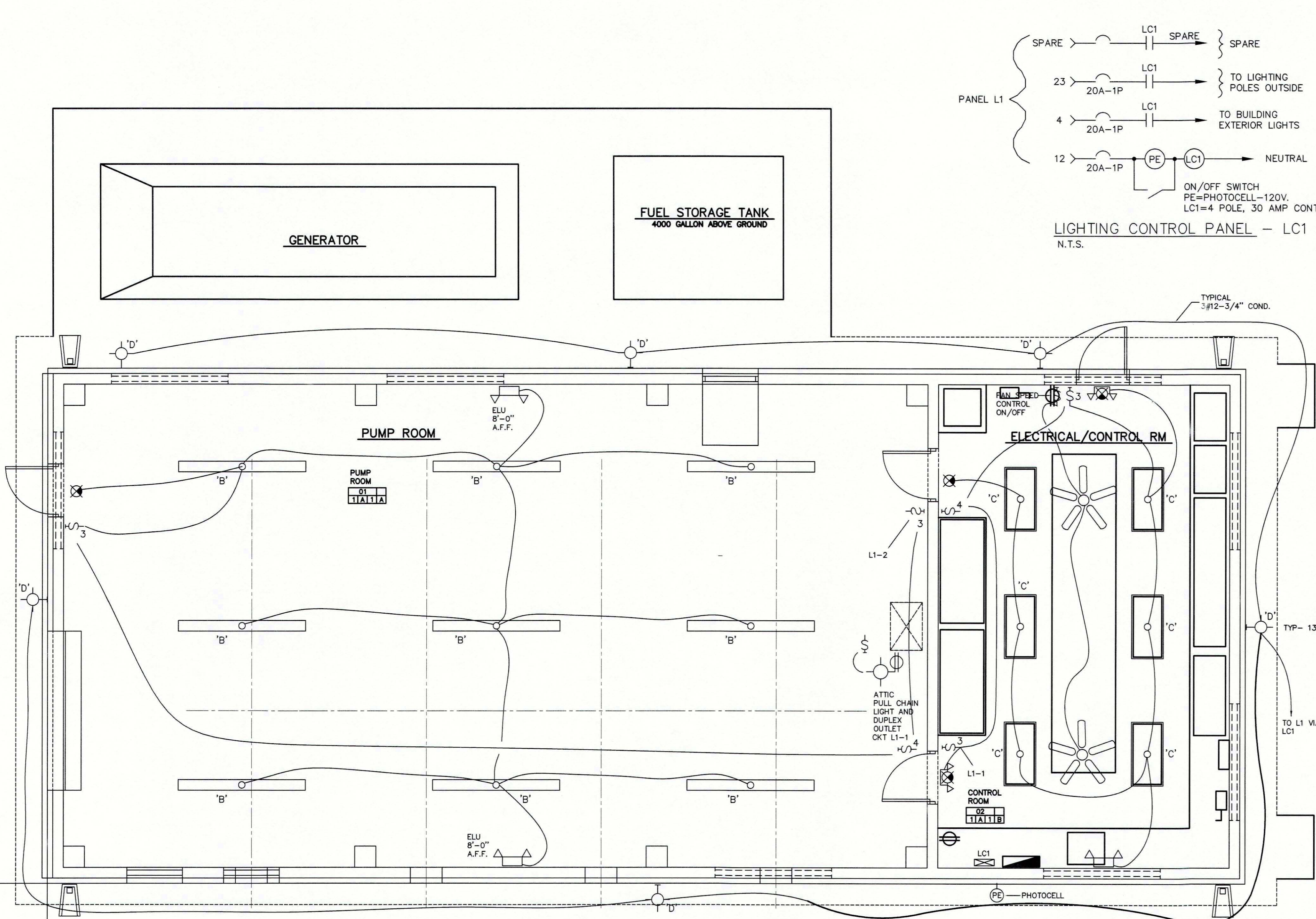


REV. NO.	REVISION	DATE	DRAWN BY / EMP. NO.	CHECKED BY / EMP. NO.	WM APPROVED BY:	ACTIVITY	INITIALS/EMP. NO.	DATE
A	UPDATE DESIGN/CODE UPDATES FOR REPERMITTING	08/13/15	KG					



Stantec Consulting Services Inc. • 5172 Station Way, Sarasota, FL 34233
Tel. 941.366.1922 • Fax. 941.225.6182 • Florida Certificate No. 27013 • www.stantec.com

CLIENT:	MANATEE COUNTY PUBLIC WORKS	DATE:	AUGUST 2015	TITLE:	ELECTRICAL POWER PLAN	
PROJECT:	VILLAGE OF PARRISH MASTER PUMP STATION	HORIZONTAL SCALE:	1"=4'	INDEX NUMBER:	D-05925-001-0000E1	
		VERTICAL SCALE:	1"=4'	CROSS REFERENCE FILE NO.:		
		SEC. 29	33	19	PROJECT NUMBER:	177310561
					SHEET NUMBER:	E5 OF 17



NOTE:
CONTRACTOR SHALL PROVIDE LIGHT POLE BASE AND POLE MOUNTING SHOP DRAWINGS SEALED AND SIGNED BY PROFESSIONAL STRUCTURAL ENGINEER LICENSED IN FLORIDA

LIGHTING FIXTURE SCHEDULE				
TYPE	WATT	DESCRIPTION	MANUF'R	CATALOG NUMBER
A	103	120V LED LIGHTING. REFER TO DETAIL 'A' THIS SHEET.	LITHONIA	KADLED-60C-530-40K-R3-MVOLT
B	78	8'-0" LONG, VAPOR TIGHT, GASKETED LED FIXTURE NON-CORROSIVE HOUSING, ACRYLIC LENS SUITABLE FOR WET LOCATIONS	HOLOPHANE	EMS8 LED 6L IMAFL 120
C	47	2' X 4', HIGH RECESSED TROFFER WITH LED LIGHTING	LITHONIA	2TL4 46L
D	72	WALL MOUNTED LED OUTDOOR WALL PAK 120V DIE-CAST ALUMINUM HOUSING, REDUCED OFFSITE VISIBILITY PHOTOCELL CONTROL, TYPE IV DISTRIBUTION	HOLOPHANE	W4GLE20C100040KT3M120PEBZ
⊗	4	LED EXIT SIGN, RATED FOR DAMP LOCATION WITHIN PUMP ROOM, UNIVERSAL DIRECTIONAL CHEVRONS, SEALED NICKEL CADMIUM BATTERY, SELF-CONTAINED AUTO-CHARGING, WALL OR CEILING MOUNTED AS REQUIRED. 120VAC, 12V-DC	HOLOPHANE	MEX S R SD QM LED W R SD USPOM
⊗	36	EMERGENCY LIGHTING UNIT, SELF CONTAINED AUTO-CHARGING BATTERY BACK-UP W/TEST SWITCH & PILOT LIGHT, SEALED NICKEL CADMIUM BATTERY, (2) LED LAMPHEADS 120 VAC	HOLOPHANE	CZ11 LED SD USPOM
⊗	36	LED EXIT SIGN WITH (2) EMERGENCY LAMPS, SELF CONTAINED AUTO-CHARGING BATTERY BACK-UP W/TEST SWITCH & PILOT LIGHT, SEALED NICKEL CADMIUM BATTERY, 120 VAC	HOLOPHANE	QM LED W R SD USPOM
⊗	-	HUNTER BAYPORT 20400 - 52" FAN (3 SPEED CONTROLS) 120 VOLTS, STEM MOUNT FROM TRUSSES	HUNTER	20400

LIGHTING PLAN
SCALE: 1/4" = 1'-0"

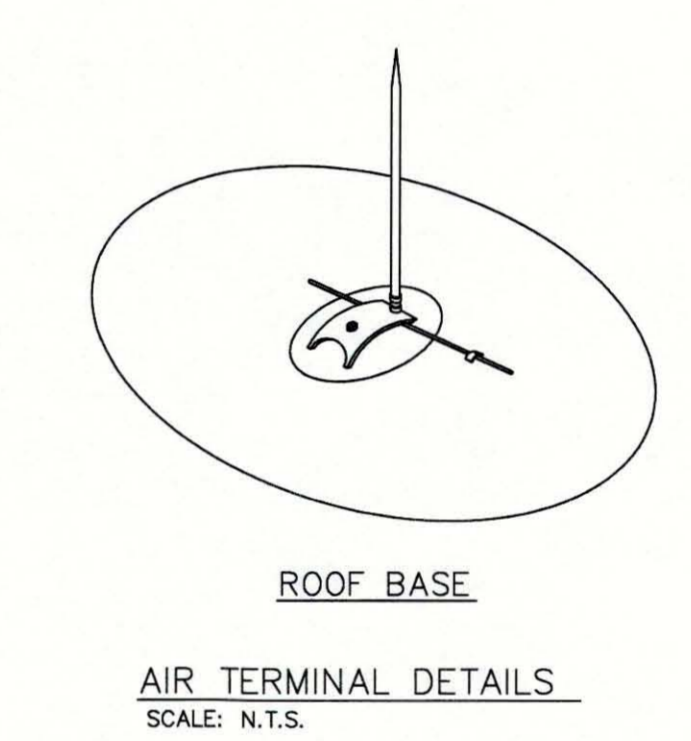
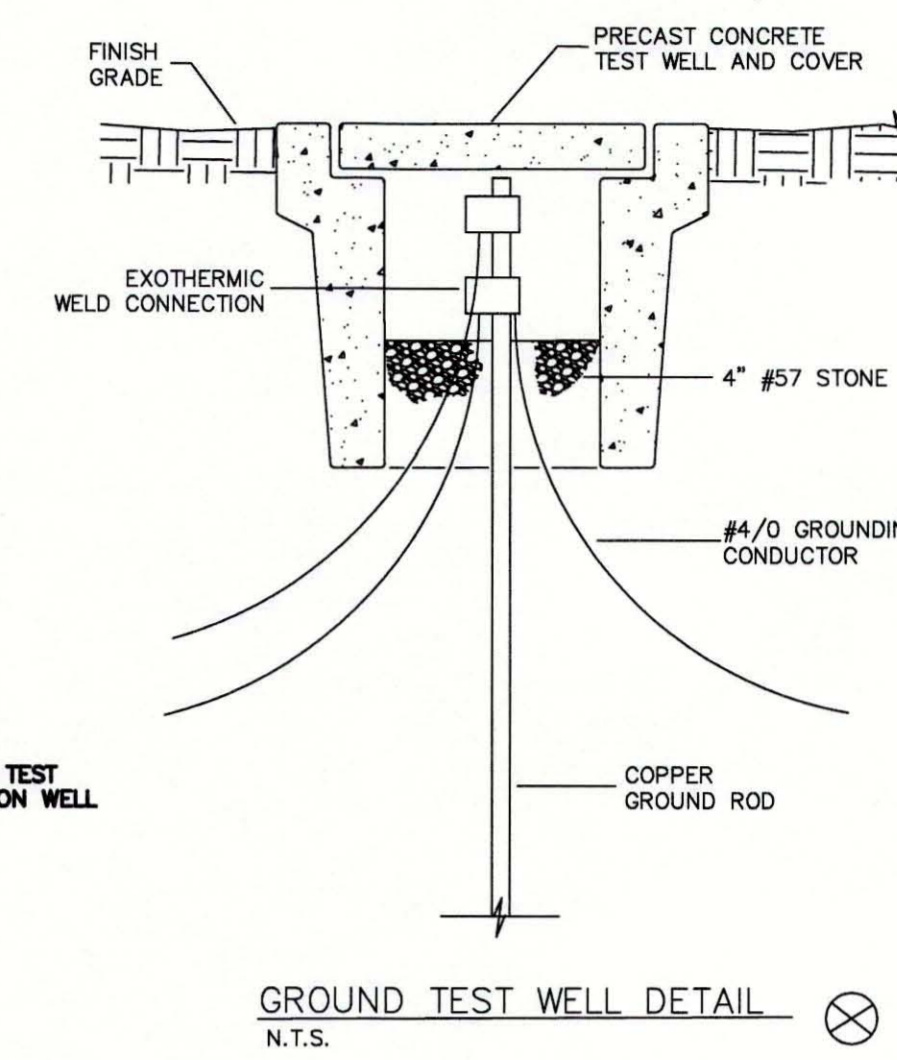
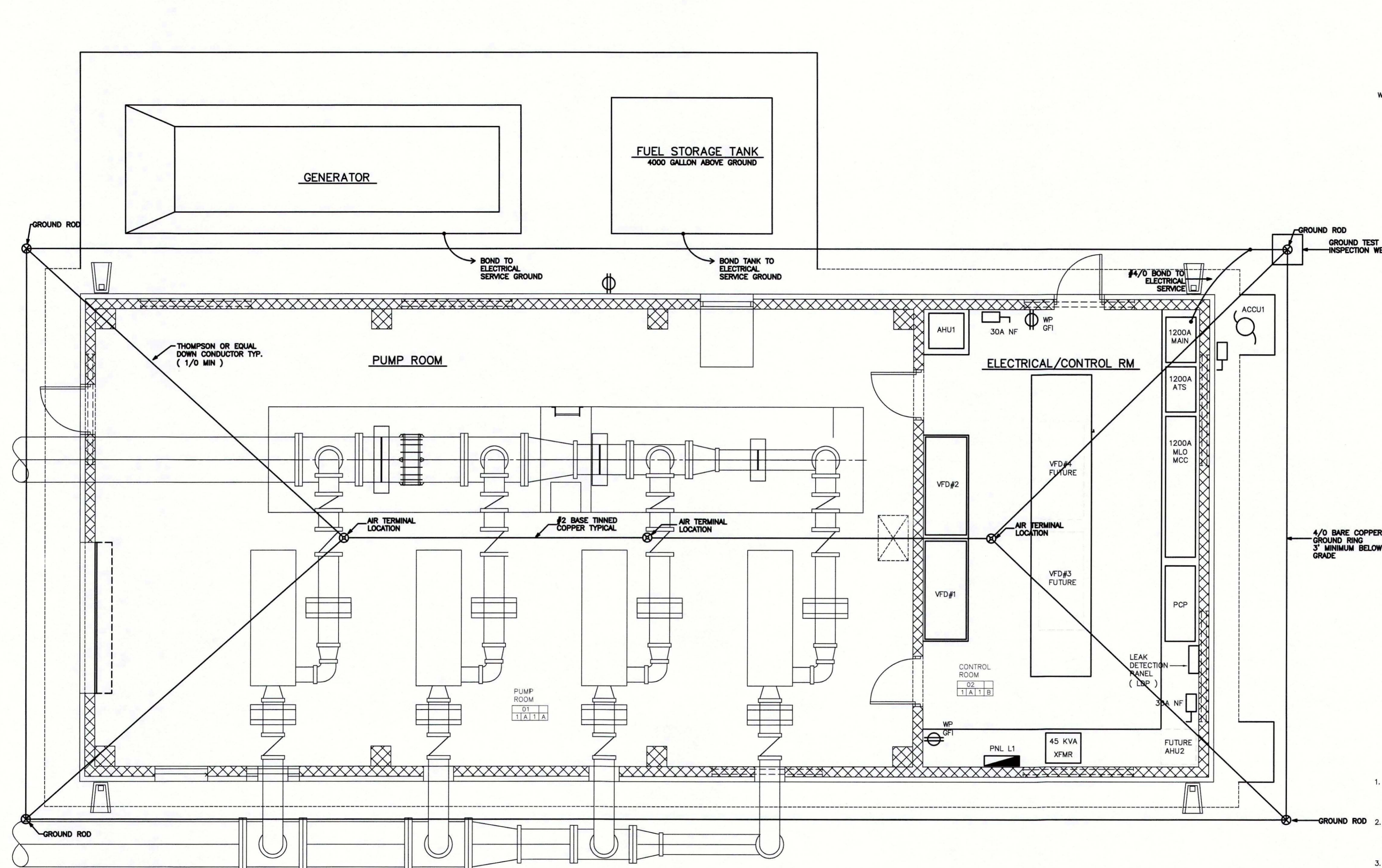


REV. NO.	REVISION	DATE	DRAWN BY / DWP. NO.	CHECKED BY / DWP. NO.	WM APPROVED BY:
A	UPDATE DESIGN/CODE UPDATES FOR REPERMITTING	08/13/15	KG		



Stantec Consulting Services Inc. • 5172 Station Way, Sarasota, FL 34233
Tel. 941.366.1922 • Fax. 941.225.6182 • Florida Certificate No. 27013 • www.stantec.com

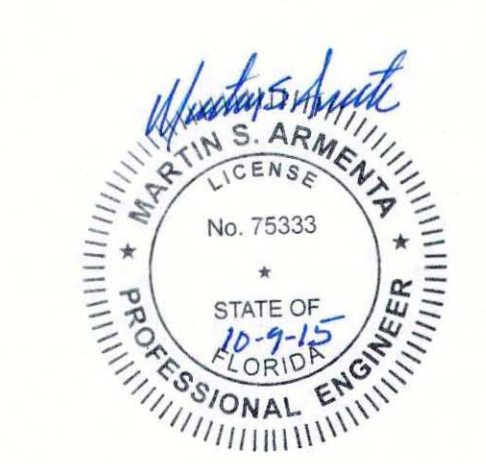
CLIENT:	MANATEE COUNTY PUBLIC WORKS	DATE:	AUGUST 2015	TITLE:	BUILDING LIGHTING PLAN
PROJECT:	VILLAGE OF PARRISH MASTER PUMP STATION	HORIZONTAL SCALE:	1"=4'	INDEX NUMBER:	D-05925-001-0000E1
		VERTICAL SCALE:	1"=4'	SHEET NUMBER:	E6 OF E17
		CROSS REFERENCE FILE NO.:		PROJECT NUMBER:	177310561



- LEGEND:**
- ⊗ 1/2" x 24" LIGHTNING PROTECTION AIR TERMINAL WITH ADHESIVE BASE
 - CADWELD
 - ⊗ 5/8" x 20' (MIN.) COPPER GROUND ROD (TYP.)

- LIGHTNING PROTECTION INSTALLATION NOTES:**
1. INSTALLATION SHALL COMPLY IN ALL RESPECTS TO L.P.1, CODE 175. INSTALLATION SHALL BE MADE BY OR UNDER THE SUPERVISION OF AN L.P.1 CERTIFIED MASTER INSTALLER. COMPLETED INSTALLATION TO RECEIVE SYSTEM CERTIFICATION INCLUDING SUBMITTAL OF FORMS L.P.1, 175-A AND 175-B.
 2. ALL MATERIALS SHALL BE UNDERWRITERS LABORATORIES APPROVED WITH ' A ' LABEL ON EACH AIR TERMINAL AND ' B ' LABEL AT 10'-0" ALONG ALL MAIN CONDUCTORS. COMPLETE INSTALLATION AS SHOWN SHALL BEAR U.L. MASTER LABEL ' C ' AS PER U.L. CODE 96A. ALL WORK SHALL COMPLY WITH NFPA 780 LATEST EDITION.
 3. INTERCONNECT LIGHTNING PROTECTION GROUND TO ELECTRIC BUILDING GROUND SYSTEMS AS SHOWN OR AS REQUIRED BY CODE.
 4. ALL CABLE TO CABLE, CABLE TO LUG AND CABLE TO GROUND ROD CONNECTIONS SHALL BE MADE WITH CADWELD.

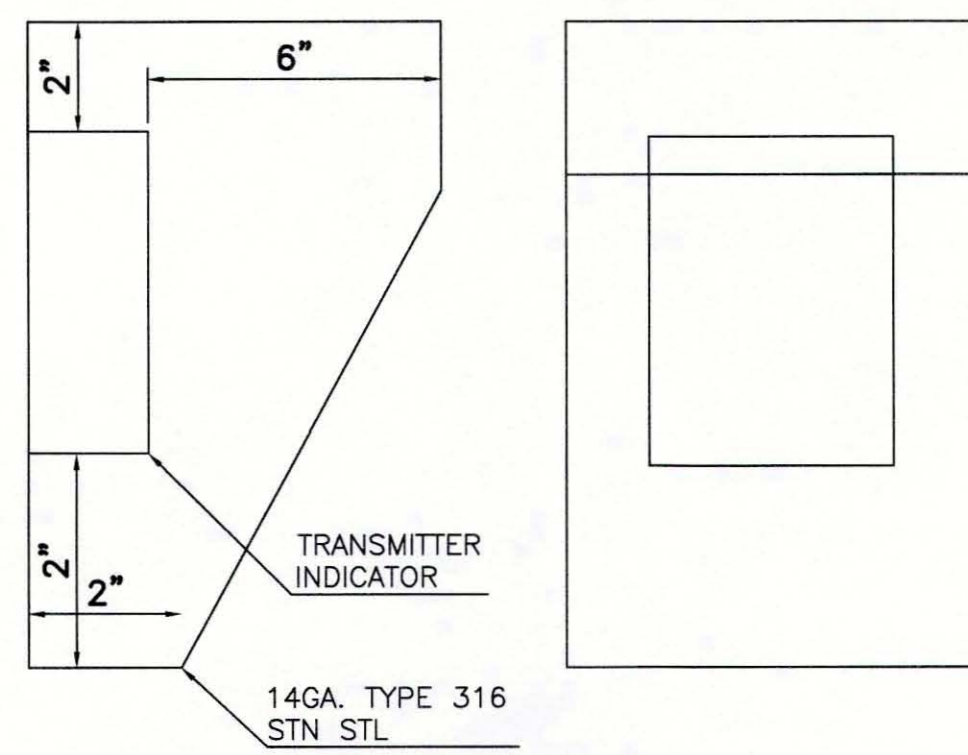
LIGHTNING PROTECTION PLAN
SCALE: 1/4" = 1'-0"



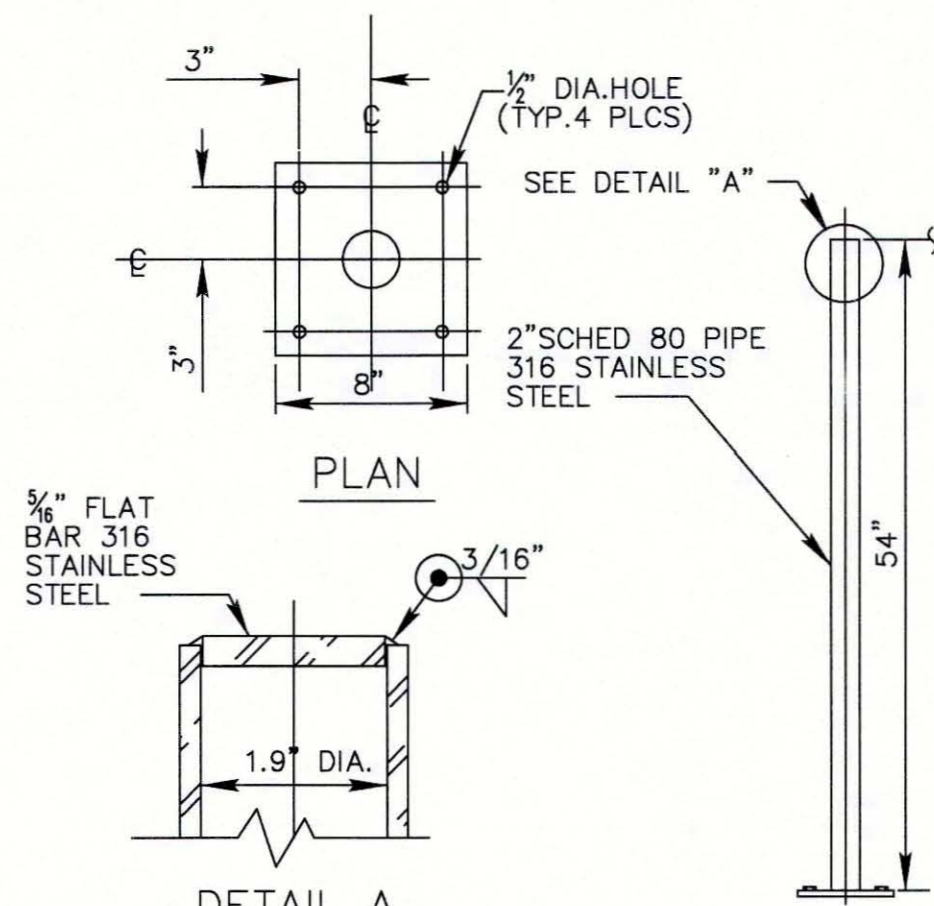
<table border="1"> <tr> <th>REV. NO.</th> <th>REVISION</th> <th>DATE</th> <th>DRAWN BY / EMP. NO.</th> <th>CHECKED BY / EMP. NO.</th> <th>WM APPROVED BY:</th> </tr> <tr> <td>A</td> <td>UPDATE DESIGN/CODE UPDATES FOR REPERMITTING</td> <td>08/13/15</td> <td>KG</td> <td></td> <td></td> </tr> </table>				REV. NO.	REVISION	DATE	DRAWN BY / EMP. NO.	CHECKED BY / EMP. NO.	WM APPROVED BY:	A	UPDATE DESIGN/CODE UPDATES FOR REPERMITTING	08/13/15	KG			<table border="1"> <tr> <th>ACTIVITY</th> <th>INITIALS/EMP. NO.</th> <th>DATE</th> </tr> <tr> <td>DESIGNED BY:</td> <td>JN</td> <td>JULY 2015</td> </tr> <tr> <td>DRAWN BY:</td> <td>BB</td> <td>JULY 2015</td> </tr> <tr> <td>CHECKED BY:</td> <td>MA</td> <td>JULY 2015</td> </tr> <tr> <td>CONTRACT ADMIN. BY:</td> <td></td> <td></td> </tr> </table>				ACTIVITY	INITIALS/EMP. NO.	DATE	DESIGNED BY:	JN	JULY 2015	DRAWN BY:	BB	JULY 2015	CHECKED BY:	MA	JULY 2015	CONTRACT ADMIN. BY:			<p>CLIENT: MANATEE COUNTY PUBLIC WORKS</p> <p>PROJECT: VILLAGE OF PARRISH MASTER PUMP STATION</p>		<p>DATE: AUGUST 2015</p> <p>HORIZONTAL SCALE: 1"=4'</p> <p>VERTICAL SCALE: 1"=4'</p> <p>SEC. TRIP: RISE: 20, 29 33, 19</p>		<p>TITLE: LIGHTNING PROTECTION PLAN</p> <p>CROSS REFERENCE FILE NO:</p> <p>PROJECT NUMBER: 177310561</p> <p>SHEET NUMBER: E7 OF 17</p>		<p>MARTIN S. ARMENTA, P.E. FLORIDA LICENSE NO. 75333 D-05925-001-0000E1</p>	
REV. NO.	REVISION	DATE	DRAWN BY / EMP. NO.	CHECKED BY / EMP. NO.	WM APPROVED BY:																																					
A	UPDATE DESIGN/CODE UPDATES FOR REPERMITTING	08/13/15	KG																																							
ACTIVITY	INITIALS/EMP. NO.	DATE																																								
DESIGNED BY:	JN	JULY 2015																																								
DRAWN BY:	BB	JULY 2015																																								
CHECKED BY:	MA	JULY 2015																																								
CONTRACT ADMIN. BY:																																										



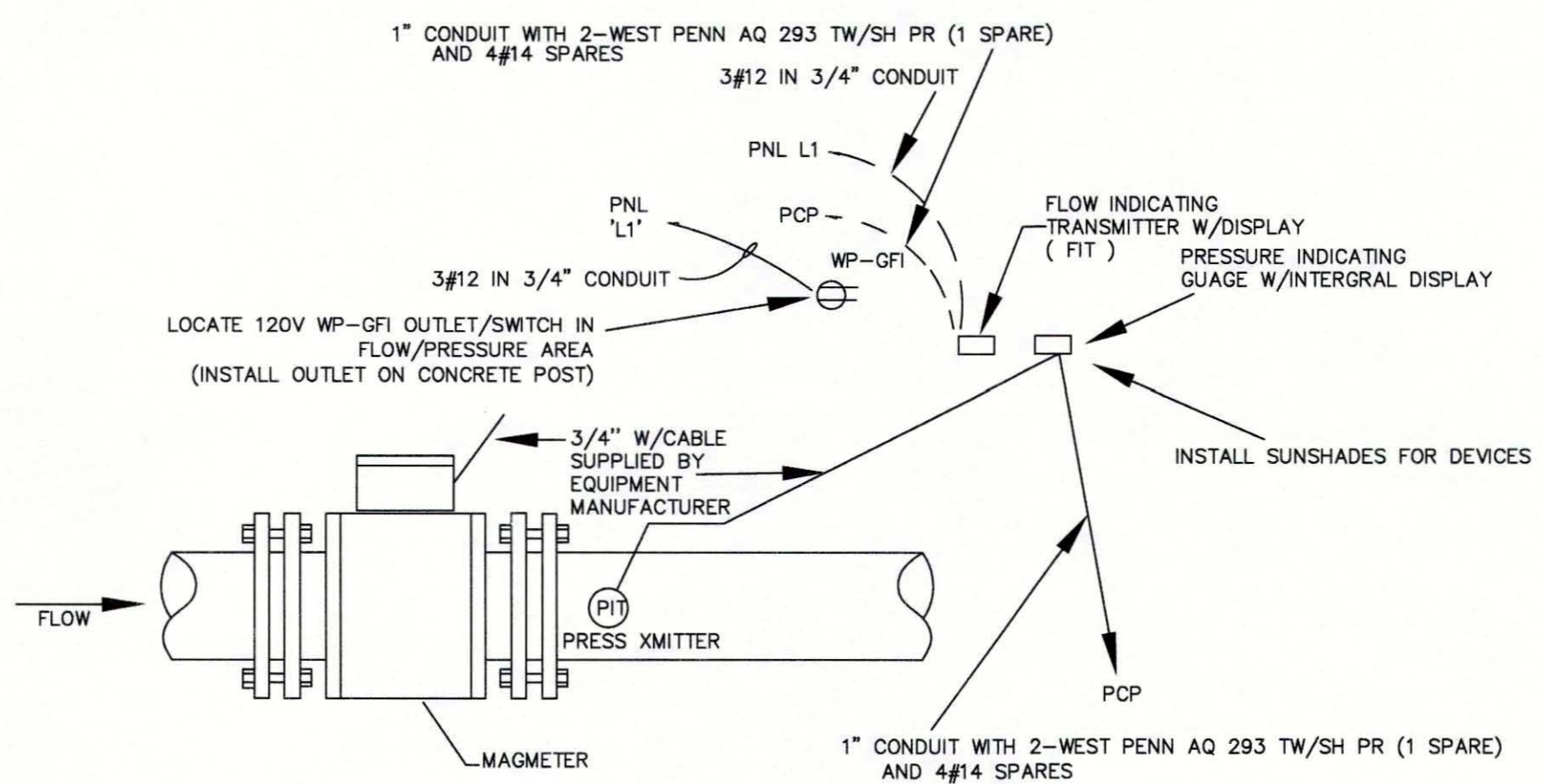
Stantec Consulting Services Inc. • 5172 Station Way, Sarasota, FL 34233
Tel. 941.366.1922 • Fax. 941.225.6182 • Florida Certificate No. 27013 • www.stantec.com



PRESSURE/FLOW METER SUNSHADE DETAIL

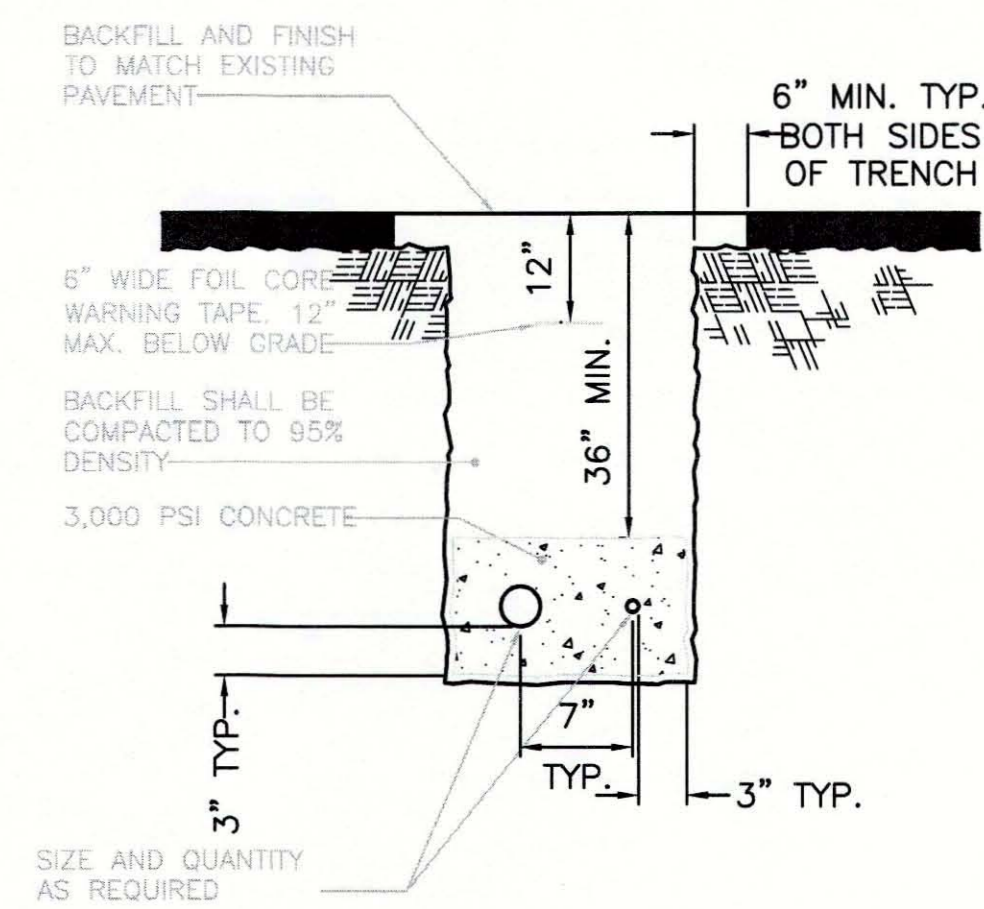


FLOOR MOUNT DETAIL

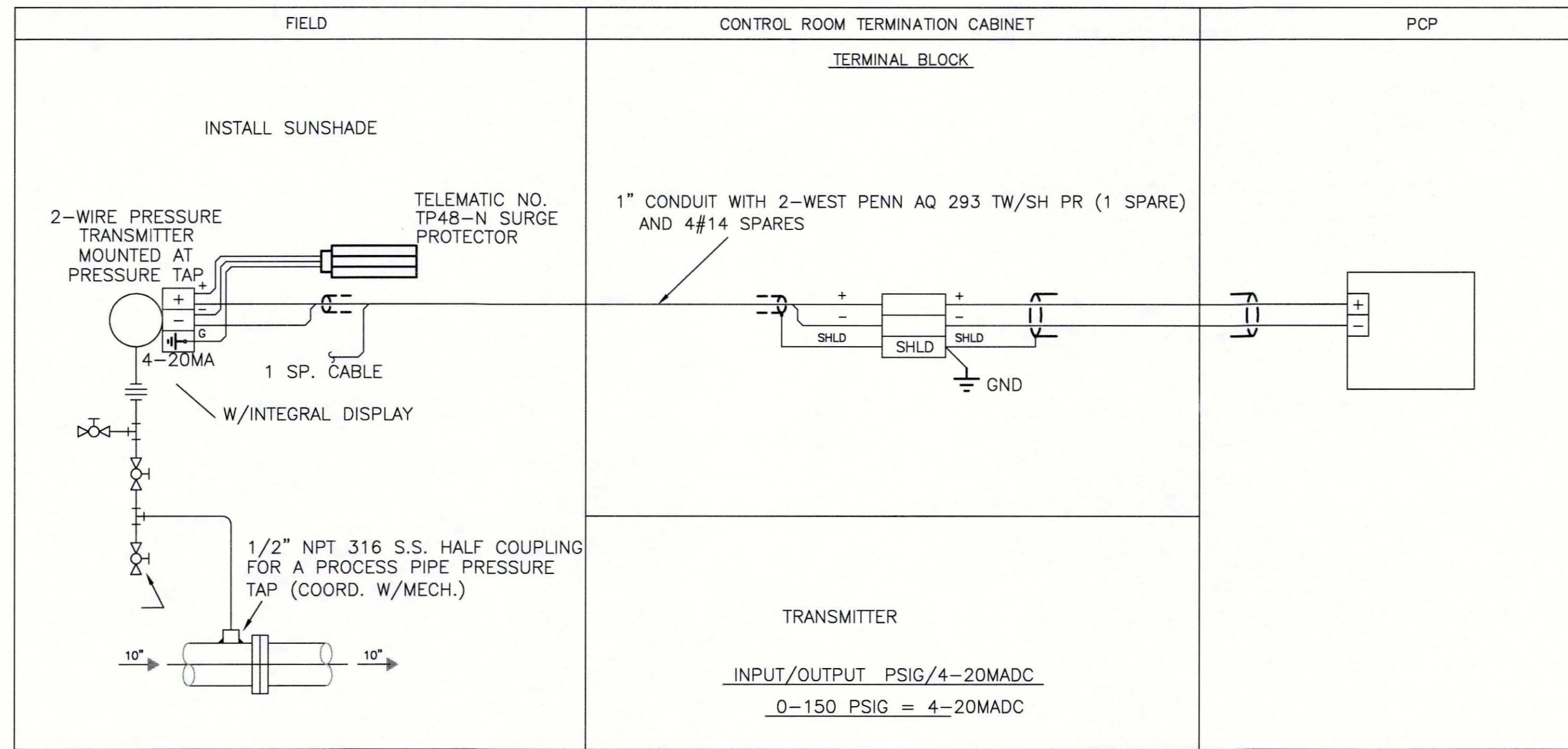


INFLUENT METER AREA
N.T.S.
SEE DRAWING E-8 FOR LOCATION

PROVIDE TWO (2) PRESSURE TRANSMITTERS/GAUGES FOR INFLUENT METERING AND TWO (2) PRESSURE TRANSMITTERS/GAUGES FOR DISCHARGE METERING

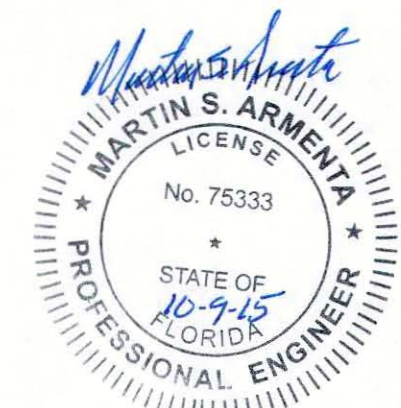


CABLE TRENCH DETAIL



TYPICAL DISCHARGE/INFLUENT PRESSURE METER DETAIL

NOTE:
THE CONTRACTOR WILL FURNISH AND INSTALL THE MOUNTING HARDWARE. ALL MOUNTING



REV NO.	REVISION	DATE	DRAWN BY / EMP. NO.	CHECKED BY / EMP. NO.	WM APPROVED BY:
A	UPDATE DESIGN/CODE UPDATES FOR REPERMITTING	08/13/15	KG		

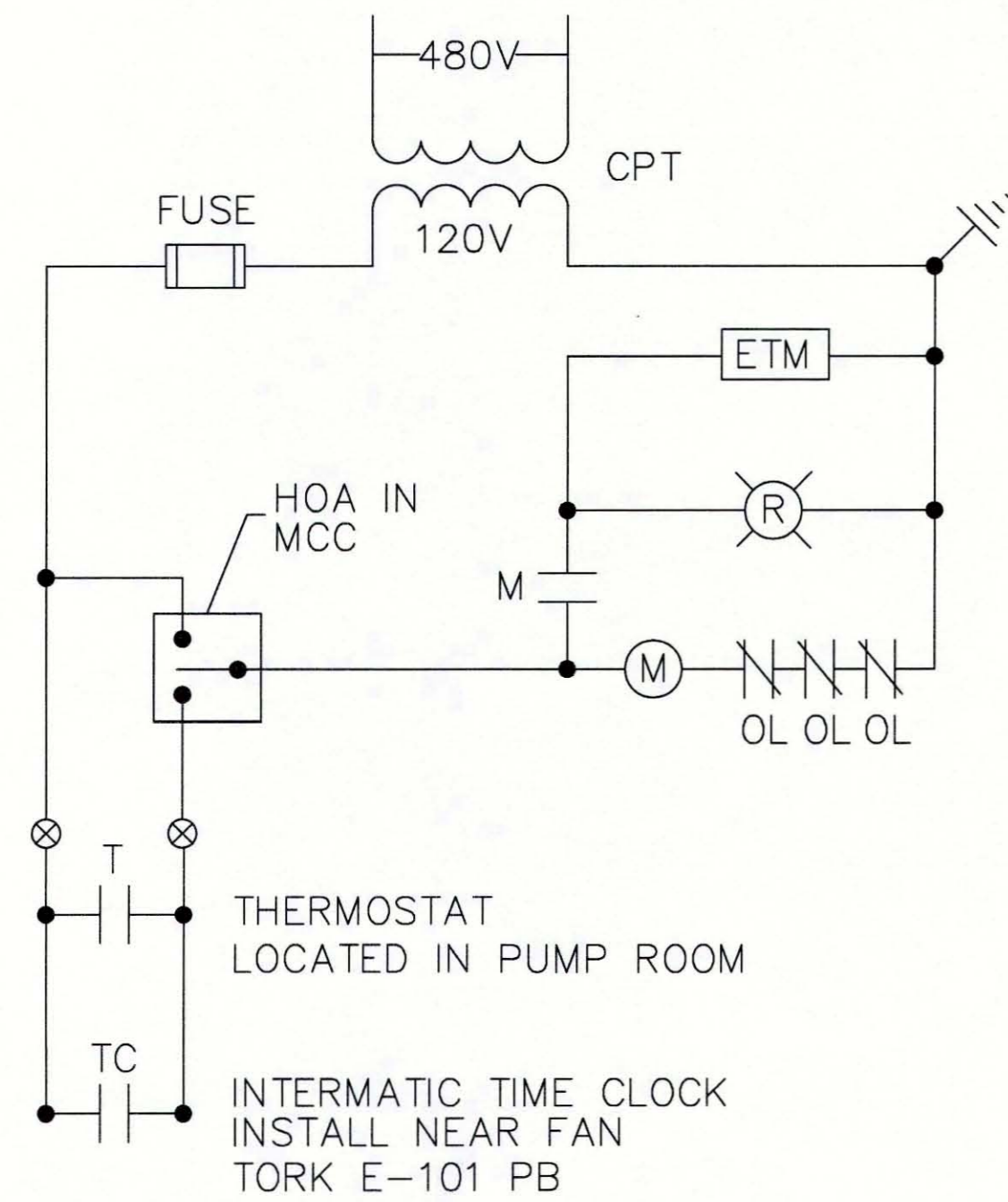


Stantec Consulting Services Inc. • 5172 Station Way, Sarasota, FL 34233
Tel. 941.366.1922 • Fax. 941.225.6182 • Florida Certificate No. 27013 • www.stantec.com

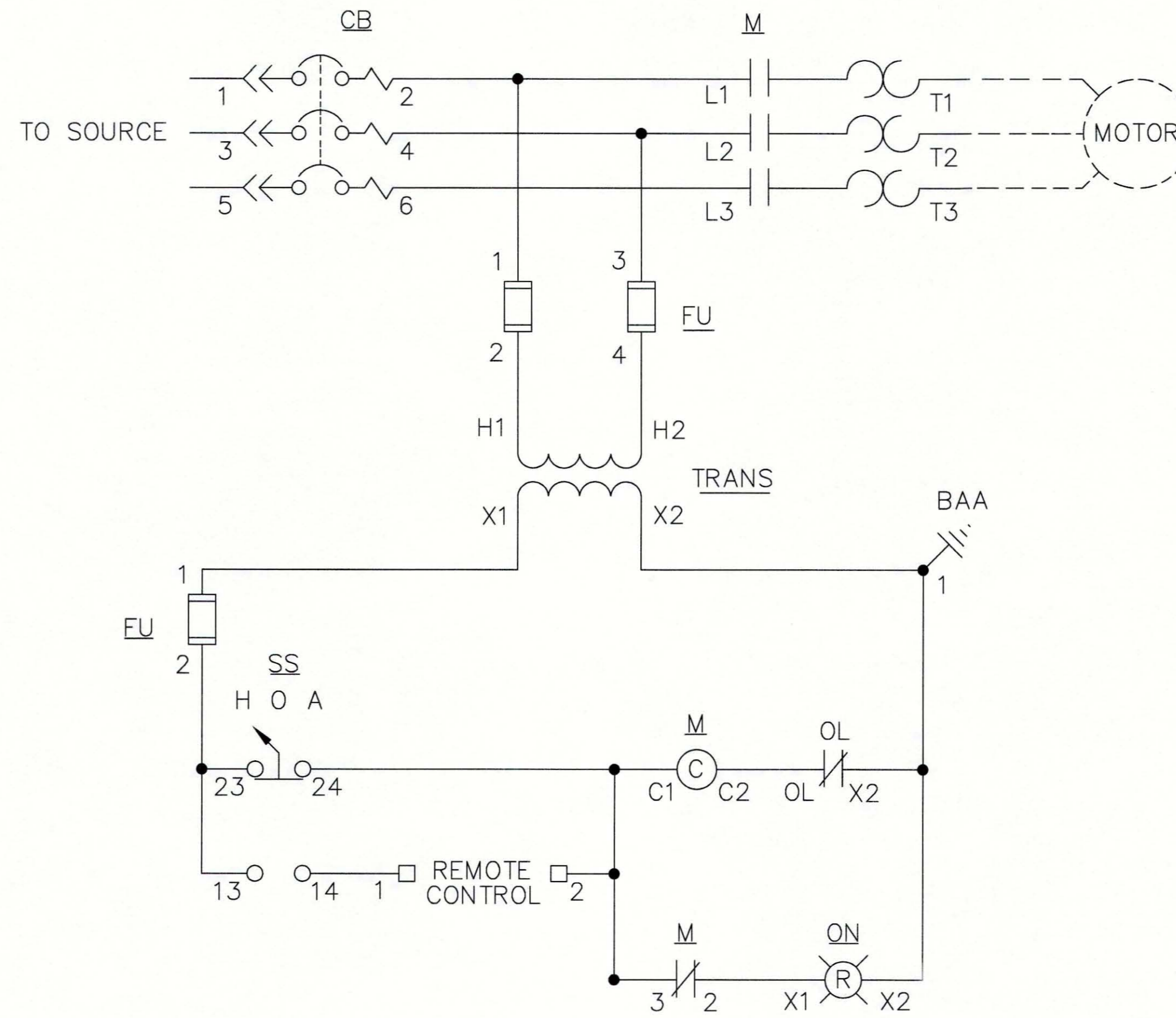
CLIENT:	MANATEE COUNTY PUBLIC WORKS
PROJECT:	VILLAGE OF PARRISH MASTER PUMP STATION

DATE:	AUGUST 2015	TITLE:	ELECTRICAL DETAILS
HORIZONTAL SCALE:	1"=4'		
VERTICAL SCALE:	1"=4'		
SHEET NO.:	20	CROSS REFERENCE FILE NO.:	
TWP.:	33	PROJECT NUMBER:	177310561
RGE.:	19		

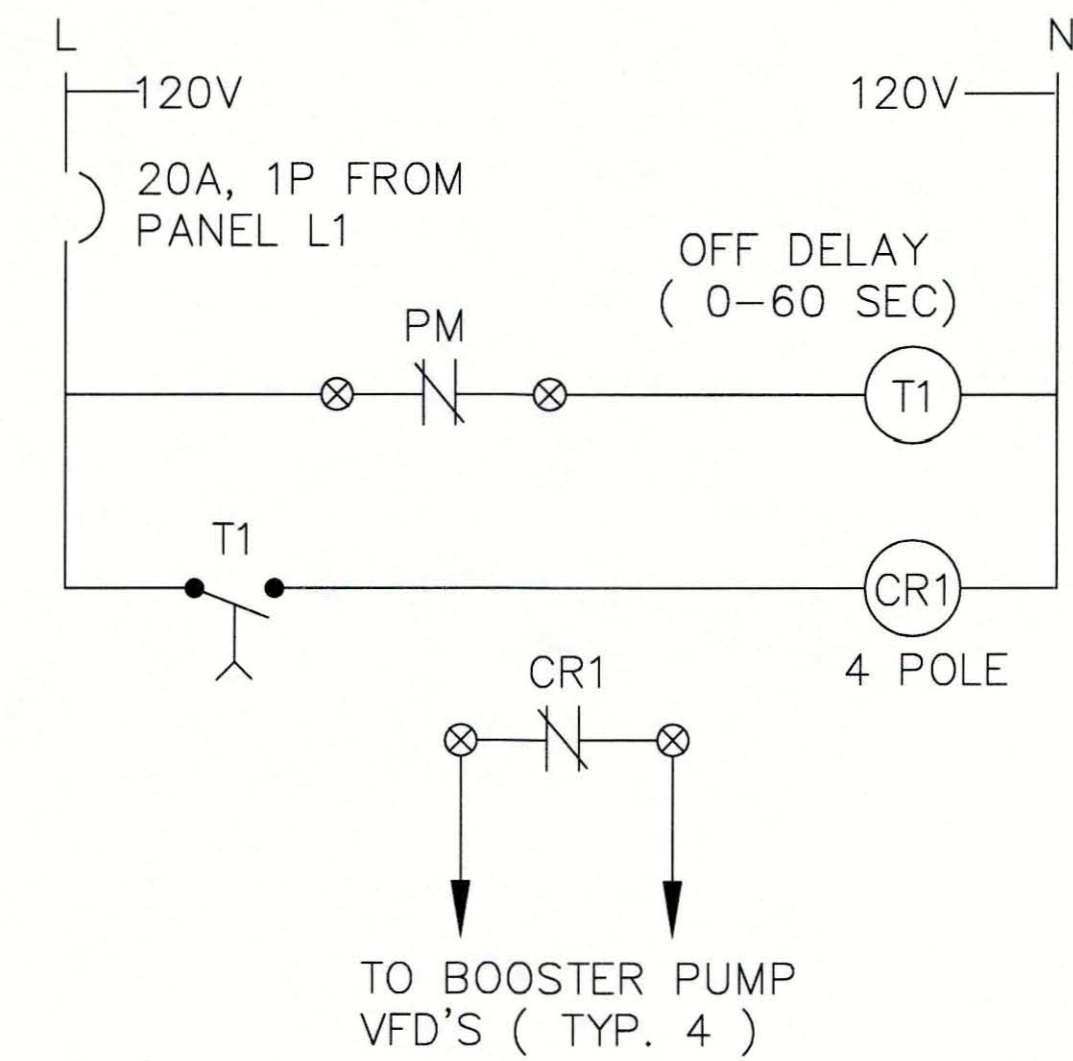
MARTIN S. ARMENTA, P.E. FLORIDA LICENSE NO. 75333
INDEX NUMBER: D-05925-001-0000E1
SHEET NUMBER: E8 OF 17



EXHAUST FAN EF-1
N.T.S.

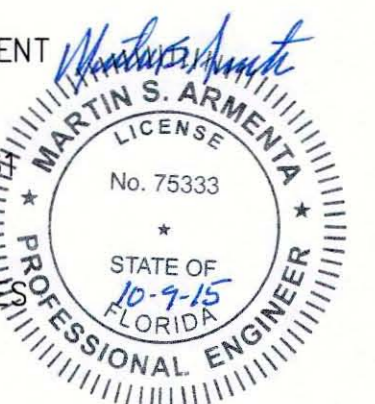


MOTOR CONTROL CENTER
N.T.S.



PHASE MONITOR ELEMENTARY
N.T.S. (PHASE MONITOR CONTROLS IN MCC)

NOTE: CONTRACTOR TO RETAIN THE SERVICES OF DATA FLOW SYSTEMS FOR THE FOLLOWING:
 FURNISH & TERMINATE NEW COAXIAL CABLE ASSEMBLY TO NEW ANTENNA TOWER. NEW DATA FLOW PLC - CONNECT TO /STARTERS/TELEMETRY EQUIPMENT TESTING OF CONTROLLER & RADIO COMMUNICATIONS LINK VERIFICATION OF TELEMETRY AT CENTRAL SITE CONTACT RANDY WYATT -DATA FLOW SYSTEMS--TEL 321-259-5009 X-1168
 CONTRACTOR TO FURNISH & INSTALL STARTERS, PANELS AND CABINETS INSTALL ALL WIRES AS SHOWN ON THE DRAWINGS. DATA FLOW SYSTEMS WILL TERMINATE THE CONTROL & INSTRUMENTATION WIRING AT THE PLC CONTROLLER.



Δ/REV. NO.	REVISION	DATE	DRWN BY / EMP. NO.	CHECKED BY / EMP. NO.	WM APPROVED BY:
A	UPDATE DESIGN/CODE UPDATES FOR REPERMITTING	08/13/15	KG		



Stantec Consulting Services Inc. • 5172 Station Way, Sarasota, FL 34233
 Tel. 941.366.1922 • Fax. 941.225.6182 • Florida Certificate No. 27013 • www.stantec.com

CLIENT:	MANATEE COUNTY PUBLIC WORKS
PROJECT:	VILLAGE OF PARRISH MASTER PUMP STATION

DATE:	AUGUST 2015
HORIZONTAL SCALE:	1"=4'
VERTICAL SCALE:	1"=4'
CROSS REFERENCE FILE NO.:	
PROJECT NUMBER:	177310561

TITLE:	ELECTRICAL DETAILS
INDEX NUMBER:	D-05925-001-0000E1
SHEET NUMBER:	E9 of 17