

REV NO.	REVISION	DATE	DRAWN BY / DWP NO.	CHECKED BY / DWP NO.	WM APPROVED BY:
D	UPDATE DESIGN/CODE UPDATES FOR REPERMITTING	08/13/15	KG		
C	ADD OTHER SURFACE WATERS, ADD SILT FENCE	6/26/13	SRP		
B	UPDATED PLANS TO INCLUDE TECO GAS MAIN AND COLLECTOR FORCE MAINS	7/01/10	SRP/1755		
A	REVISED PER MANATEE COUNTY COMMENTS DATED 5/06/08 & 1/13/09	1/22/09	SRP/1755		

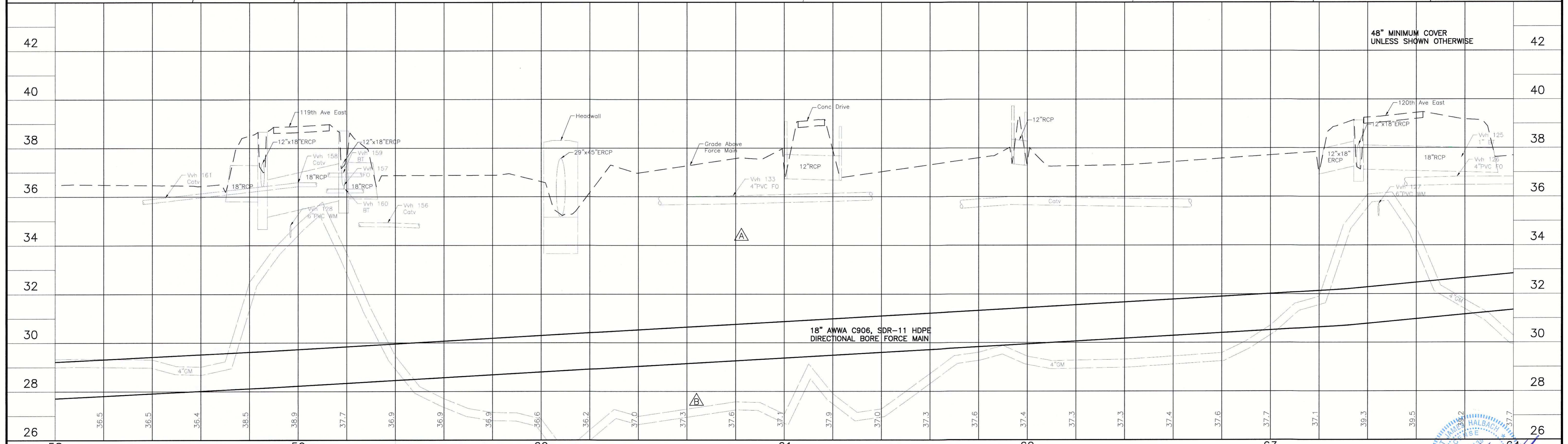
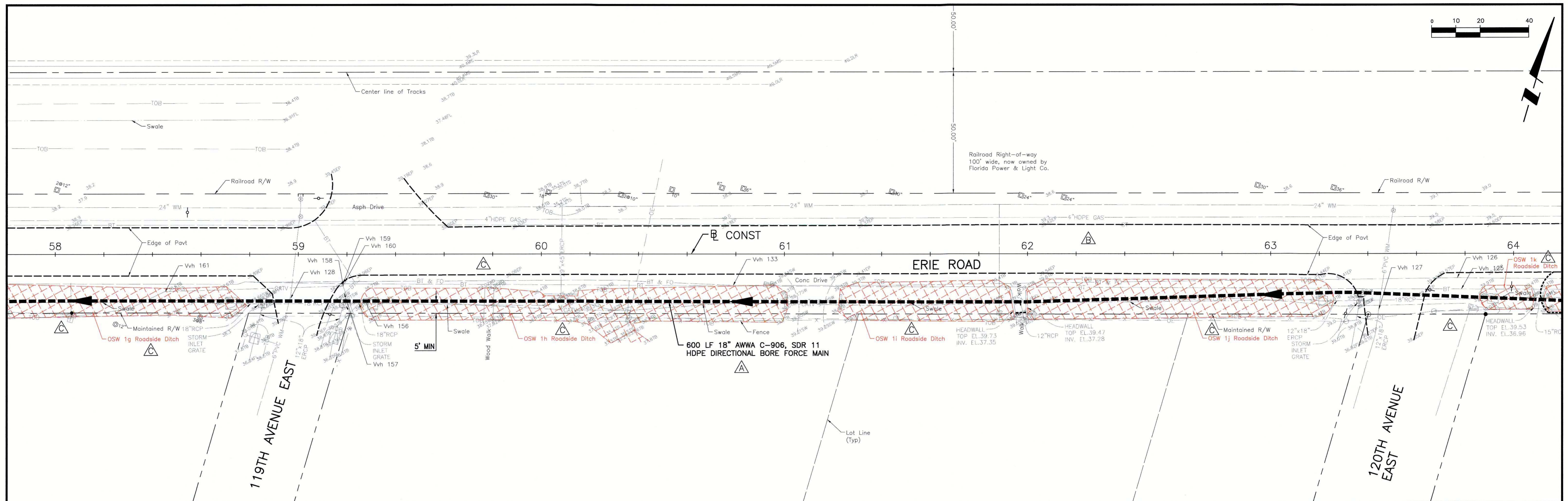
ACTIVITY	INITIALS/EMP. NO.	DATE
DESIGNED BY:	RJH	JULY 2015
DRAWN BY:	KG	JULY 2015
CHECKED BY:	RJH	JULY 2015
CONTRACT ADMIN. BY:		



Stantec Consulting Services Inc. • 5172 Station Way, Sarasota, FL 34233
 Tel. 941.366.1922 • Fax. 941.225.6182 • Florida Certificate No. 27013 • www.stantec.com

CLIENT:	MANATEE COUNTY PUBLIC WORKS
PROJECT:	VILLAGE OF PARRISH WASTEWATER FORCE MAIN
DATE:	AUGUST 2015
HORIZONTAL SCALE:	1"=20'
VERTICAL SCALE:	1"=2'
DESIGNED BY:	RJH
DRAWN BY:	KG
CHECKED BY:	RJH
DATE:	10-13-15

TITLE:	PLAN AND PROFILE ERIE RD STA 52+00 TO 58+00
PROJECT NUMBER:	177310561
SHEET NUMBER:	11 OF 30

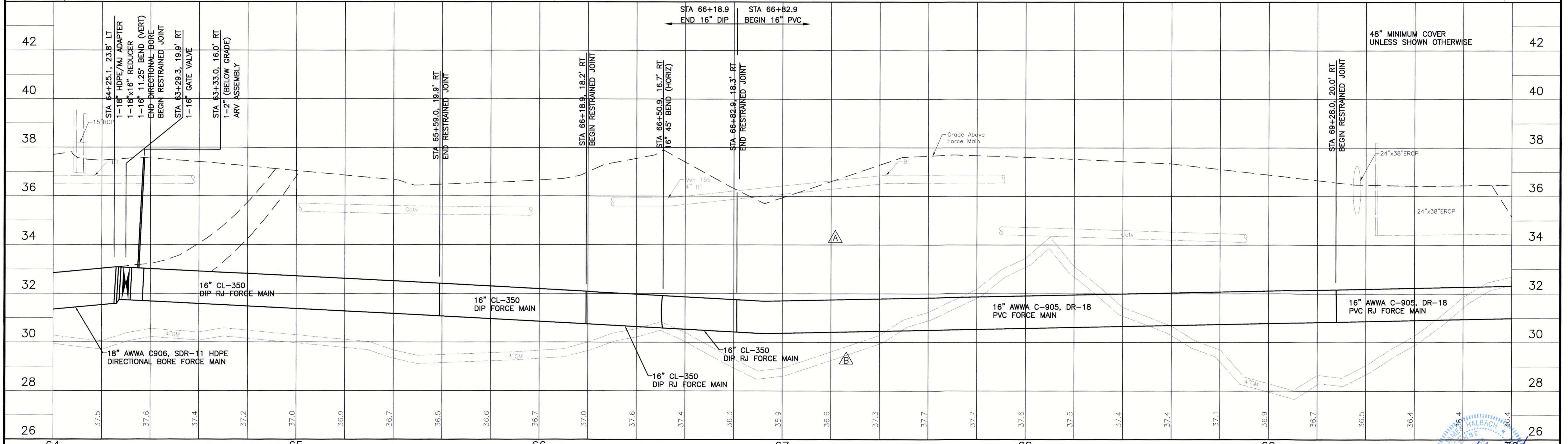
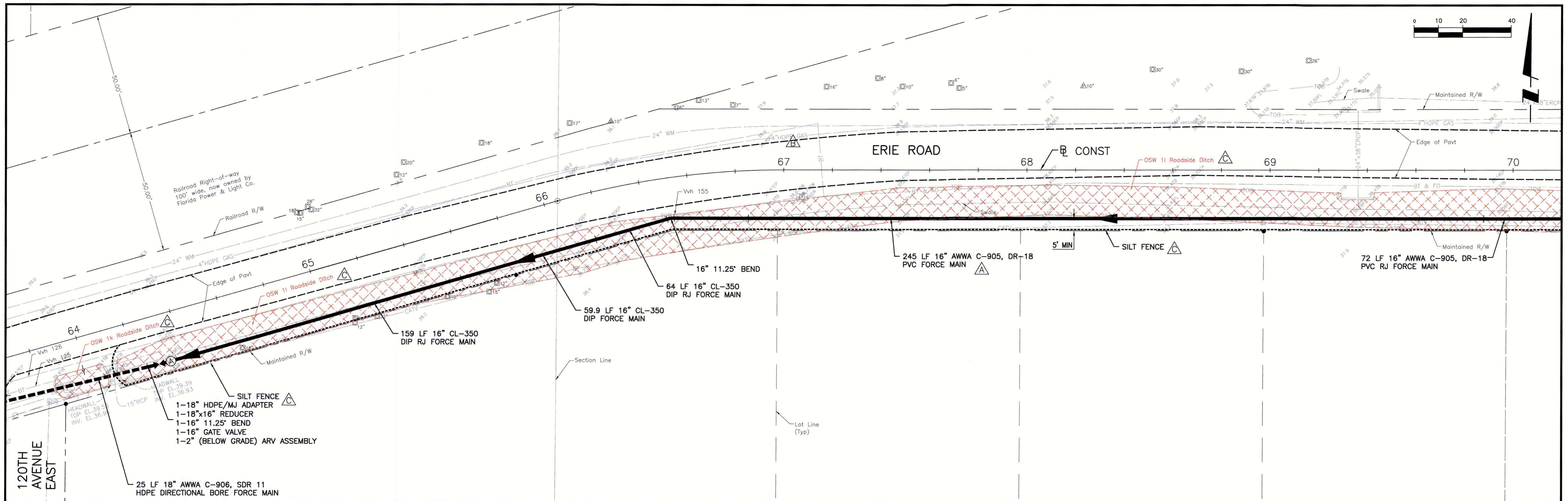


NO.	REVISION	DATE	BY	CHECKED BY	APPROVED BY
D	UPDATE DESIGN/CODE UPDATES FOR PERMITTING	08/13/15	KG		
C	ADD OTHER SURFACE WATERS, ADD SILT FENCE	6/26/13	SRP		
B	UPDATED PLANS TO INCLUDE TECO GAS MAIN AND COLLECTOR FORCE MAINS	7/01/10	SRP/1755		
A	REVISED PER MANATEE COUNTY COMMENTS DATED 5/06/08 & 1/13/09	1/22/09	SRP/1755		

Stantec
 Stantec Consulting Services Inc. • 5172 Station Way, Sarasota, FL 34233
 Tel. 941.366.1922 • Fax. 941.225.6182 • Florida Certificate No. 27013 • www.stantec.com

CLIENT: MANATEE COUNTY PUBLIC WORKS
 PROJECT: VILLAGE OF PARRISH WASTEWATER FORCE MAIN

DATE: AUGUST 2015
 HORIZONTAL SCALE: 1"=20'
 VERTICAL SCALE: 1"=2'
 TITLE: PLAN AND PROFILE ERIE RD STA 58+00 TO 64+00
 PROJECT NUMBER: 177310561
 SHEET NUMBER: 12 OF 30



REV	DATE	BY	CHECKED	DESCRIPTION
D	08/13/15	KG		UPDATE DESIGN/CODE UPDATES FOR REPERMITTING
C	6/26/13	SRP		ADD OTHER SURFACE WATERS, ADD SILT FENCE
B	07/01/10	SRP/1755		UPDATED PLANS TO INCLUDE TECO GAS MAIN AND COLLECTOR FORCE MAINS
A	1/22/09	SRP/1755		REVISED PER MANATEE COUNTY COMMENTS DATED 5/06/08 & 1/13/09

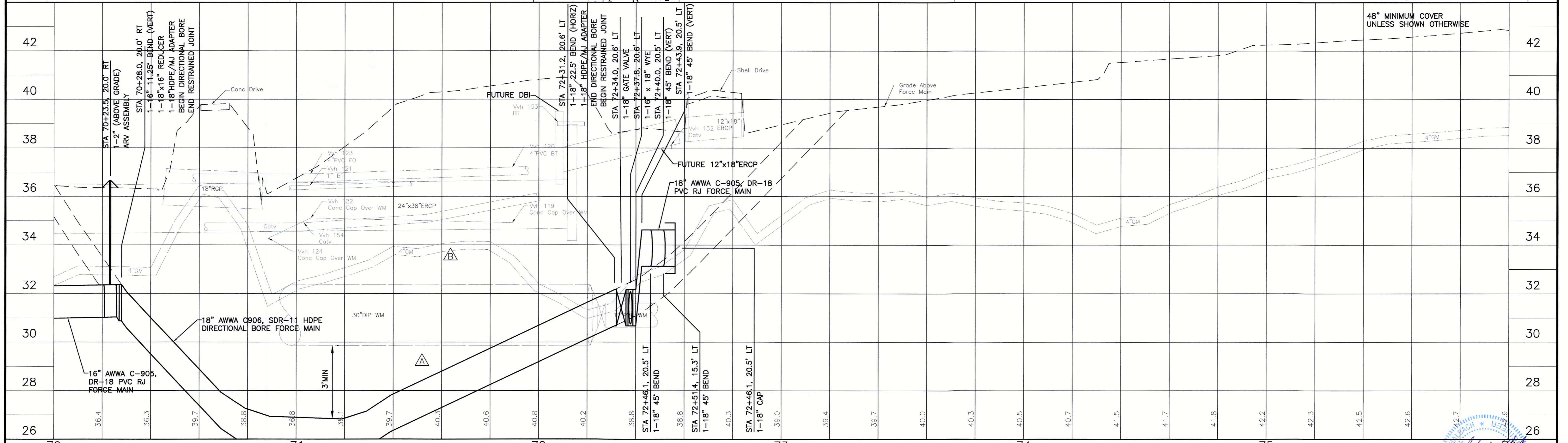
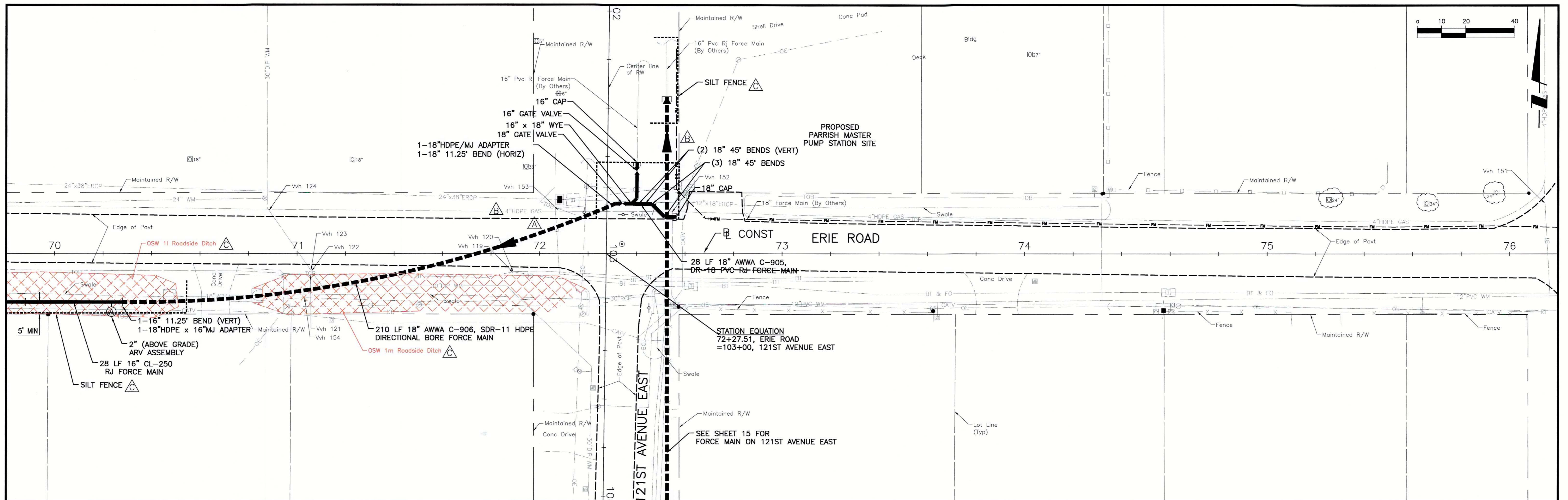
ACTIVITY	INITIALS/EMP. NO.	DATE
DESIGNED BY:	RJH	JULY 2015
DRAWN BY:	KG	JULY 2015
CHECKED BY:	RJH	JULY 2015
CONTRACT ADMIN. BY:		
WM APPROVED BY:		



Stantec Consulting Services Inc. • 5172 Station Way, Sarasota, FL 34233
Tel. 941.366.1922 • Fax. 941.225.6182 • Florida Certificate No. 27013 • www.stantec.com

CLIENT: MANATEE COUNTY PUBLIC WORKS
PROJECT: VILLAGE OF PARRISH WASTEWATER FORCE MAIN

DATE: AUGUST 2015
HORIZONTAL SCALE: 1"=20'
VERTICAL SCALE: 1"=2'
TITLE: PLAN AND PROFILE ERIE RD STA 64+00 TO 70+00
PROJECT NUMBER: 177310561
SHEET NUMBER: 13 OF 30

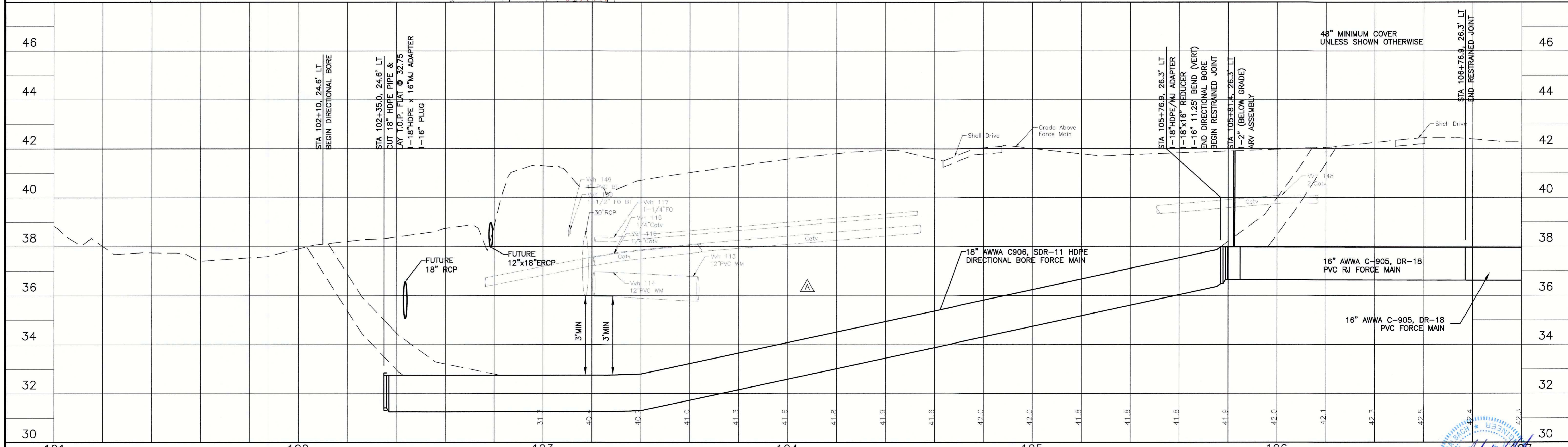
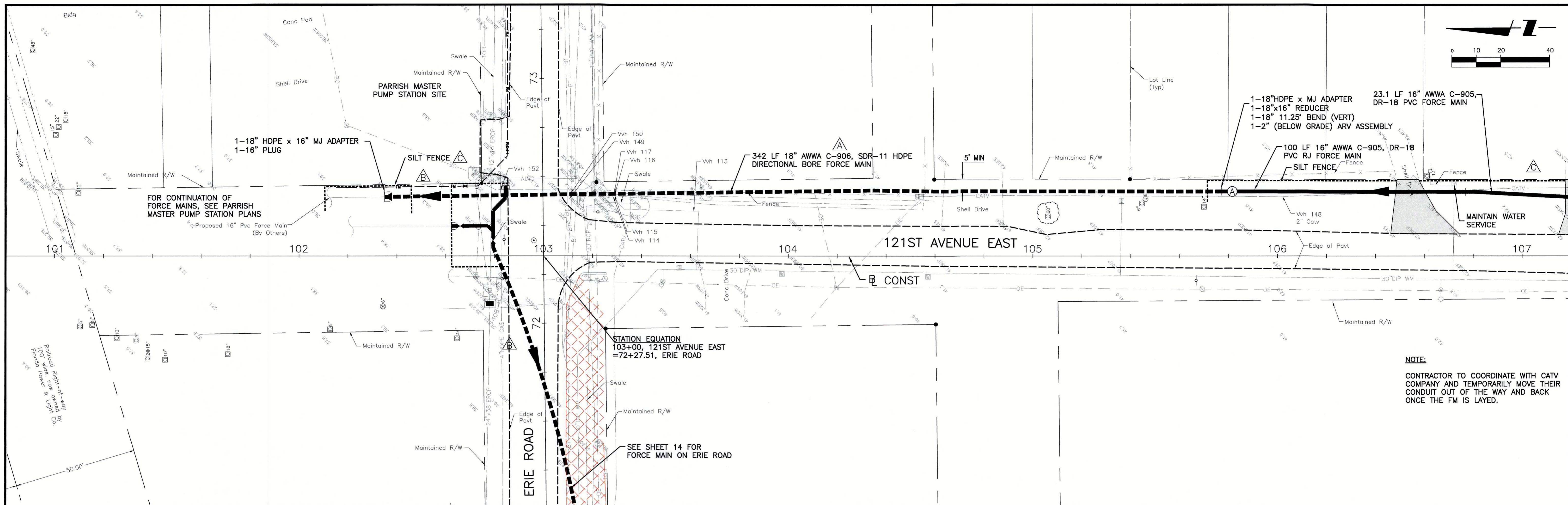


REV NO.	REVISION	DATE	DRWN BY / DWP NO.	CHECKED BY / DWP NO.	WM APPROVED BY:
D	UPDATE DESIGN/CODE UPDATES FOR REPERMITTING	08/13/15	KG		
C	ADD OTHER SURFACE WATERS, ADD SILT FENCE	6/26/13	SRP		
B	UPDATED PLANS TO INCLUDE TECO GAS MAIN AND COLLECTOR FORCE MAINS	7/01/10	SRP/1755		
A	REVISED PER MANATEE COUNTY COMMENTS DATED 5/06/08 & 1/13/09	1/22/09	SRP/1755		

Stantec

Stantec Consulting Services Inc. • 5172 Station Way, Sarasota, FL 34233
Tel. 941.365.1922 • Fax. 941.225.6182 • Florida Certificate No. 27013 • www.stantec.com

CLIENT: MANATEE COUNTY PUBLIC WORKS PROJECT: VILLAGE OF PARRISH WASTEWATER FORCE MAIN	DATE: AUGUST 2015 HORIZONTAL SCALE: 1"=20' VERTICAL SCALE: 1"=2' SHEET: 14 OF 30	TITLE: PLAN AND PROFILE ERIE RD STA 70+00 TO 76+00
CROSS REFERENCE FILE NO.: 177310561		SHEET NUMBER: 14 OF 30

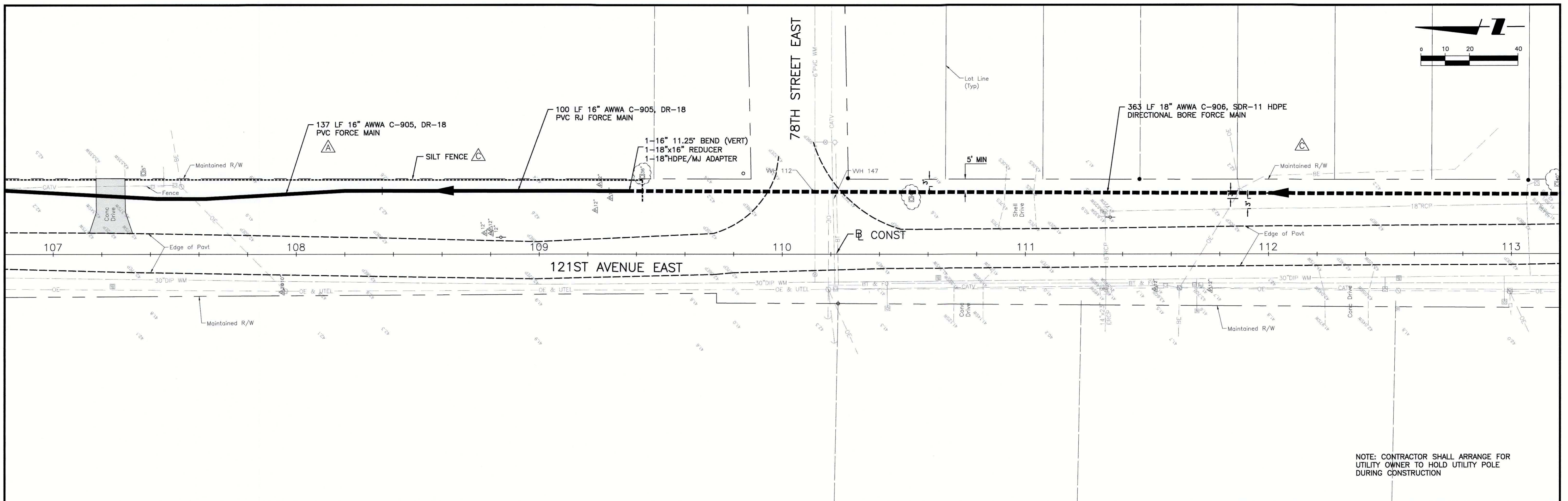


NO.	REVISION	DATE	BY / EMP. NO.	CHECKED BY / EMP. NO.	WM APPROVED BY:
D	UPDATE DESIGN/CODE UPDATES FOR REPERMITTING	08/13/15	KG		
C	ADD SILT FENCE	6/26/13	SRP		
B	UPDATED PLANS TO INCLUDE TECO GAS MAIN AND COLLECTOR FORCE MAINS	7/01/10	SRP/1755		
A	REVISED PER MANATEE COUNTY COMMENTS DATED 5/06/08 & 1/13/09	1/22/09	SRP/1755		

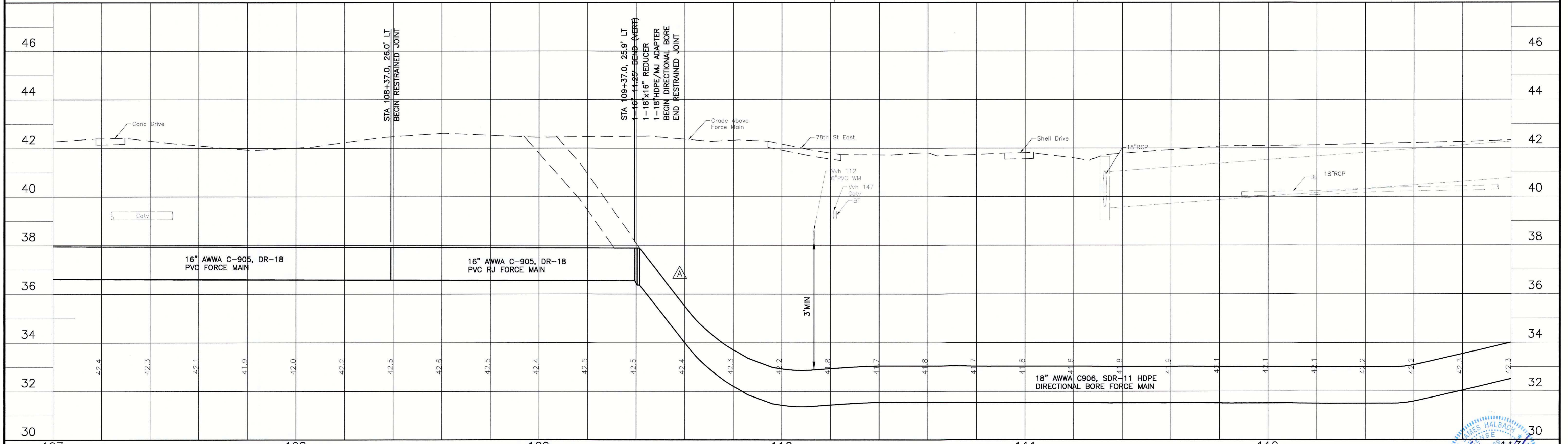
Stantec

Stantec Consulting Services Inc. • 5172 Station Way, Sarasota, FL 34233
Tel. 941.366.1922 • Fax. 941.225.6182 • Florida Certificate No. 27013 • www.stantec.com

CLIENT: MANATEE COUNTY PUBLIC WORKS PROJECT: VILLAGE OF PARRISH WASTEWATER FORCE MAIN	DATE: AUGUST 2015 HORIZONTAL SCALE: 1"=20' VERTICAL SCALE: 1"=2' SHEET: 30 OF 33	TITLE: PLAN AND PROFILE 121ST AVENUE EAST STA 103+00 TO 107+00 PROJECT NUMBER: 177310561 SHEET NUMBER: 15 OF 30
--	---	---



NOTE: CONTRACTOR SHALL ARRANGE FOR UTILITY OWNER TO HOLD UTILITY POLE DURING CONSTRUCTION



DATE	DESCRIPTION	BY	CHECKED	DATE
08/13/15	UPDATE DESIGN/CODE UPDATES FOR PERMITTING	KG		
6/26/13	ADD SILT FENCE	SRP		
1/22/09	REVISED PER MANATEE COUNTY COMMENTS DATED 5/06/08 & 1/13/09	SRP/1755		

ACTIVITY	INITIALS/EMP. NO.	DATE
DESIGNED BY:	RJH	JULY 2015
DRAWN BY:	KG	JULY 2015
CHECKED BY:	RJH	JULY 2015
CONTRACT ADMIN. BY:		
WM APPROVED BY:		

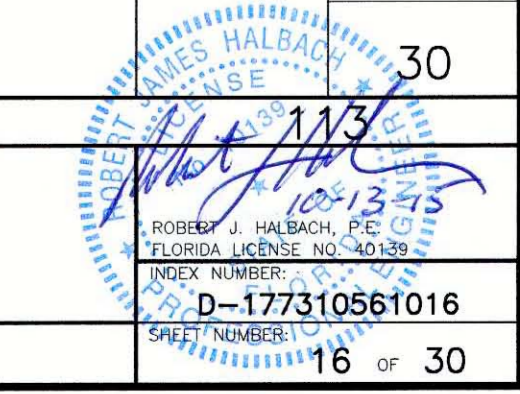


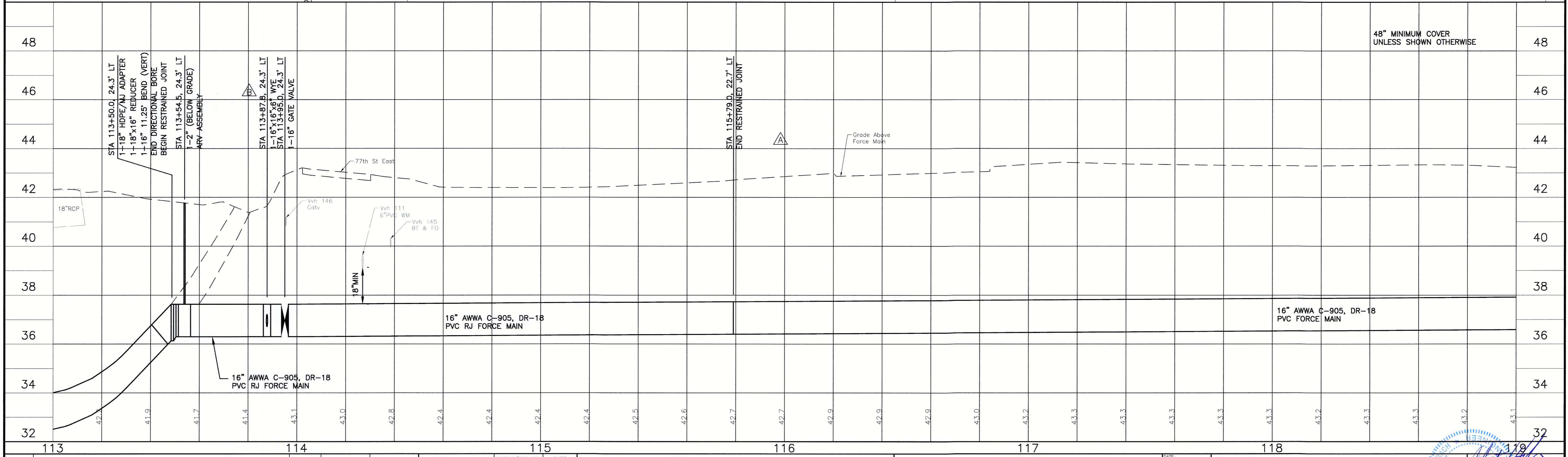
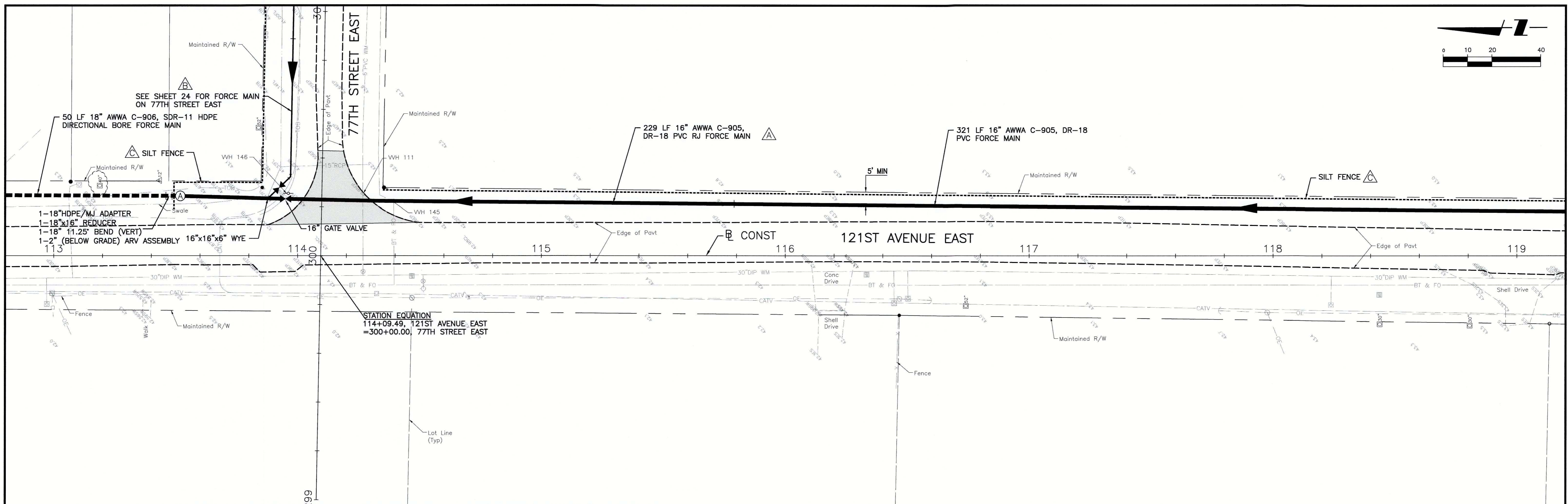
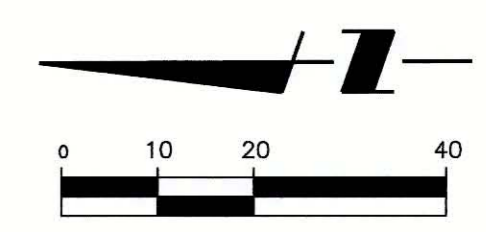
Stantec Consulting Services Inc. • 5172 Station Way, Sarasota, FL 34233
Tel. 941.366.1922 • Fax. 941.225.6182 • Florida Certificate No. 27013 • www.stantec.com

CLIENT: MANATEE COUNTY PUBLIC WORKS
PROJECT: VILLAGE OF PARRISH WASTEWATER FORCE MAIN

DATE: AUGUST 2015
HORIZONTAL SCALE: 1"=20'
VERTICAL SCALE: 1"=2'

TITLE: PLAN AND PROFILE
121ST AVENUE EAST
STA 107+00 TO 113+00



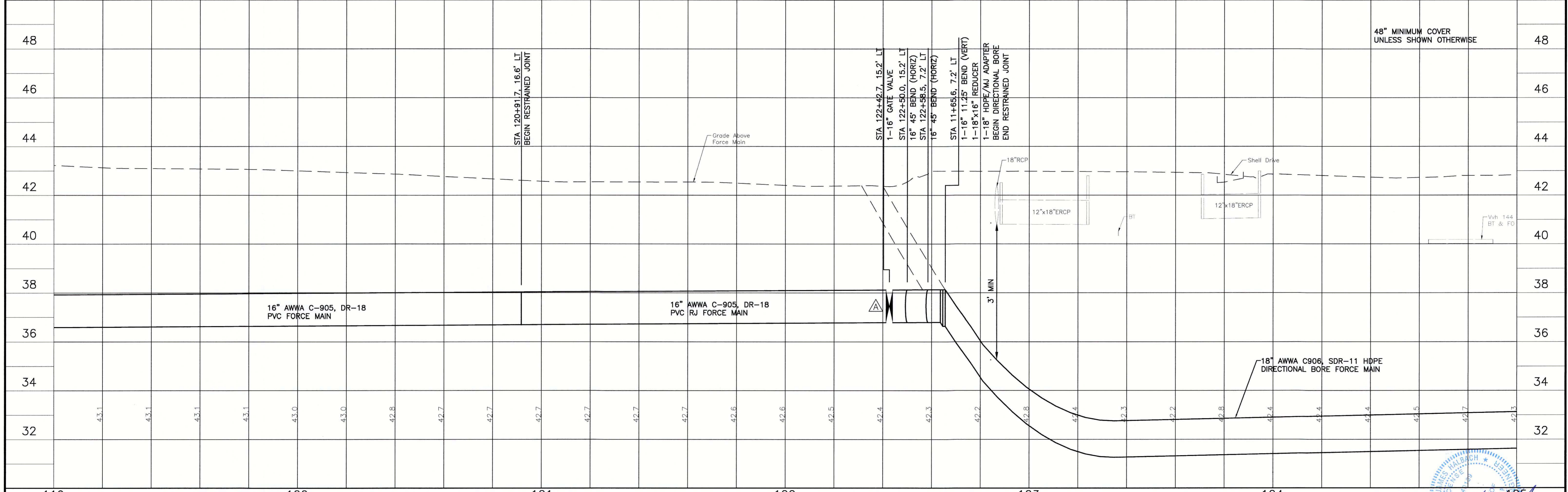
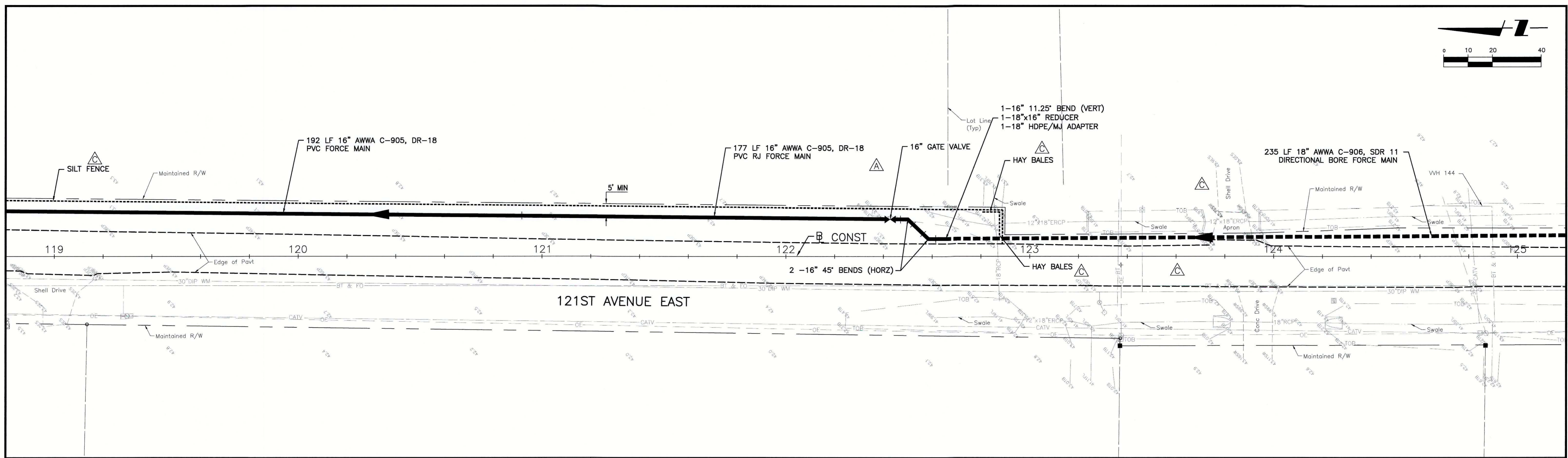
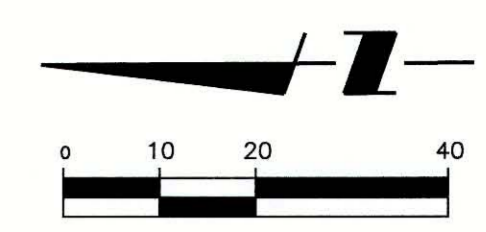


REV NO.	REVISION	DATE	DESIGNED BY	DRAWN BY	CHECKED BY	DATE
D	UP DATE DESIGN/CODE UPDATES FOR PERMITTING	08/13/15	KG			
C	ADD SILT FENCE	6/26/13	SRP			
B	UPDATED PLANS TO INCLUDE TECO GAS MAIN AND COLLECTOR FORCE MAINS	7/01/10	SRP/1755			
A	REVISED PER MANATEE COUNTY COMMENTS DATED 5/06/08 & 1/13/09	1/22/09	SRP/1755			

Stantec
 Stantec Consulting Services Inc. • 5172 Station Way, Sarasota, FL 34233
 Tel. 941.368.1922 • Fax. 941.225.6182 • Florida Certificate No. 27013 • www.stantec.com

CLIENT: MANATEE COUNTY PUBLIC WORKS
 PROJECT: VILLAGE OF PARRISH WASTEWATER FORCE MAIN
 DATE: AUGUST 2015
 HORIZONTAL SCALE: 1"=20'
 VERTICAL SCALE: 1"=2'
 SHEET: 20 OF 30
 TWP: 33
 RGE: 19

TITLE: PLAN AND PROFILE
 121ST AVENUE EAST
 STA 113+00 TO 119+00
 PROJECT NUMBER: 177310561
 SHEET NUMBER: 17 OF 30
 INDEX NUMBER: D-177310561017
 DATE: 8/10/15
 DRAWN BY: KG
 CHECKED BY: RJH
 DESIGNED BY: RJH
 DATE: JULY 2015



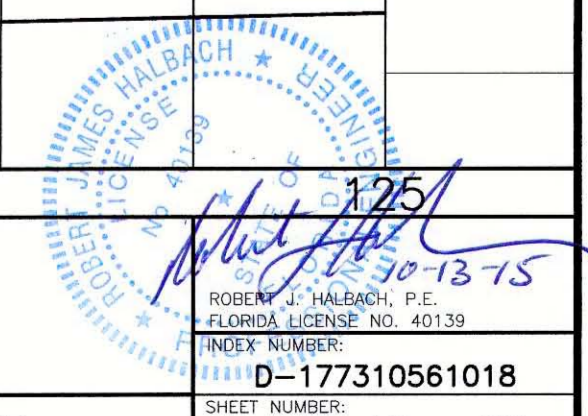
REV NO.	REVISION	DATE	DRAWN BY / DWP NO.	CHECKED BY / DWP NO.	WM APPROVED BY:
D	UPDATE DESIGN/CODE UPDATES FOR REPERMITTING	08/13/15	KG		
C	ADD SILT FENCE	6/26/13	SRP		
A	REVISED PER MANATEE COUNTY COMMENTS DATED 5/06/08 & 1/13/09	1/22/09	SRP/1755		

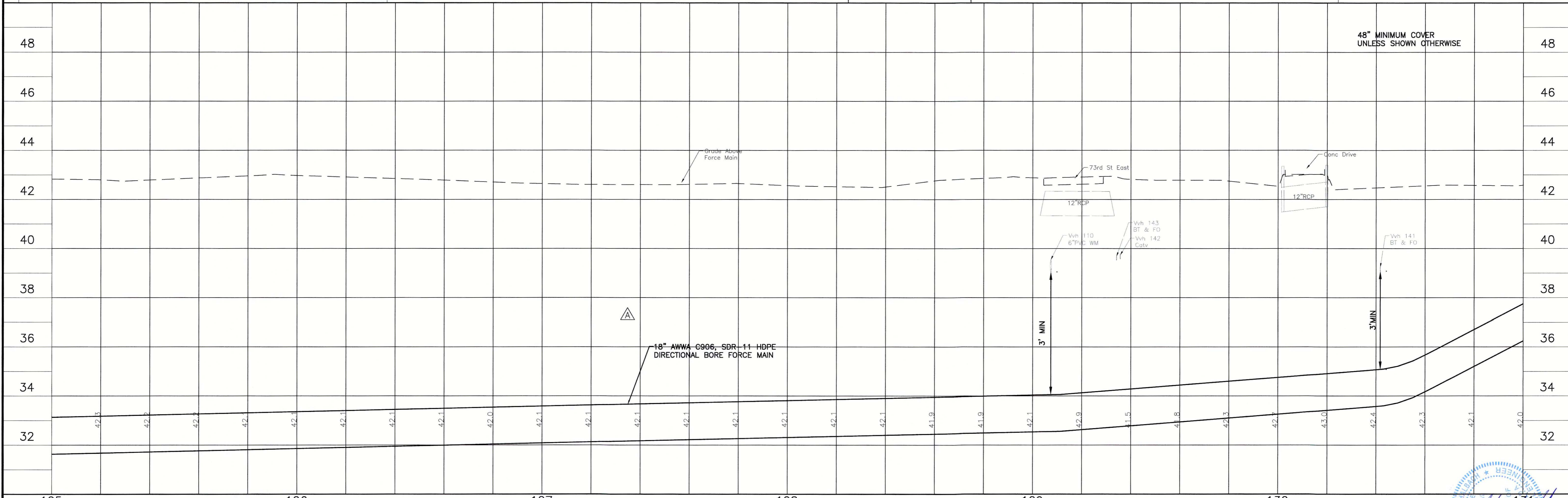
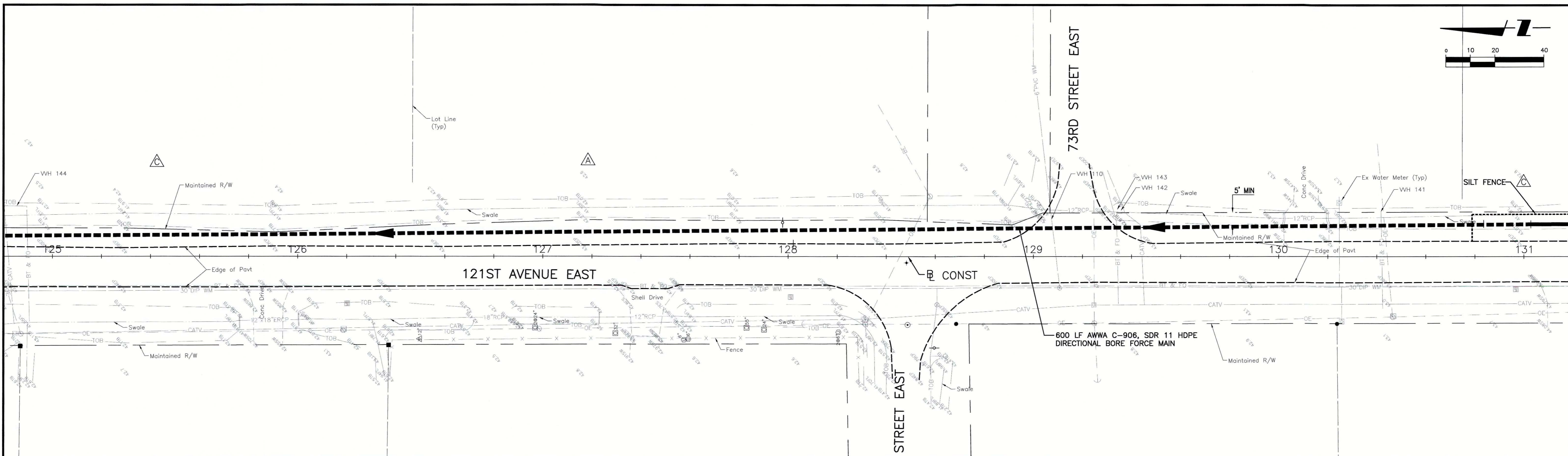
Stantec

Stantec Consulting Services Inc. • 5172 Station Way, Sarasota, FL 34233
Tel. 941.366.1922 • Fax. 941.225.6182 • Florida Certificate No. 27013 • www.stantec.com

CLIENT:	MANATEE COUNTY PUBLIC WORKS
PROJECT:	VILLAGE OF PARRISH WASTEWATER FORCE MAIN
DATE:	AUGUST 2015
HORIZONTAL SCALE:	1"=20'
VERTICAL SCALE:	1"=2'
SEC. TWP. RGE.	20.29 33 19

TITLE:	PLAN AND PROFILE 121ST AVENUE EAST STA 119+00 TO 125+00
INDEX NUMBER:	D-177310561018
SHEET NUMBER:	18 OF 30
CROSS REFERENCE FILE NO.:	PROJECT NUMBER: 177310561





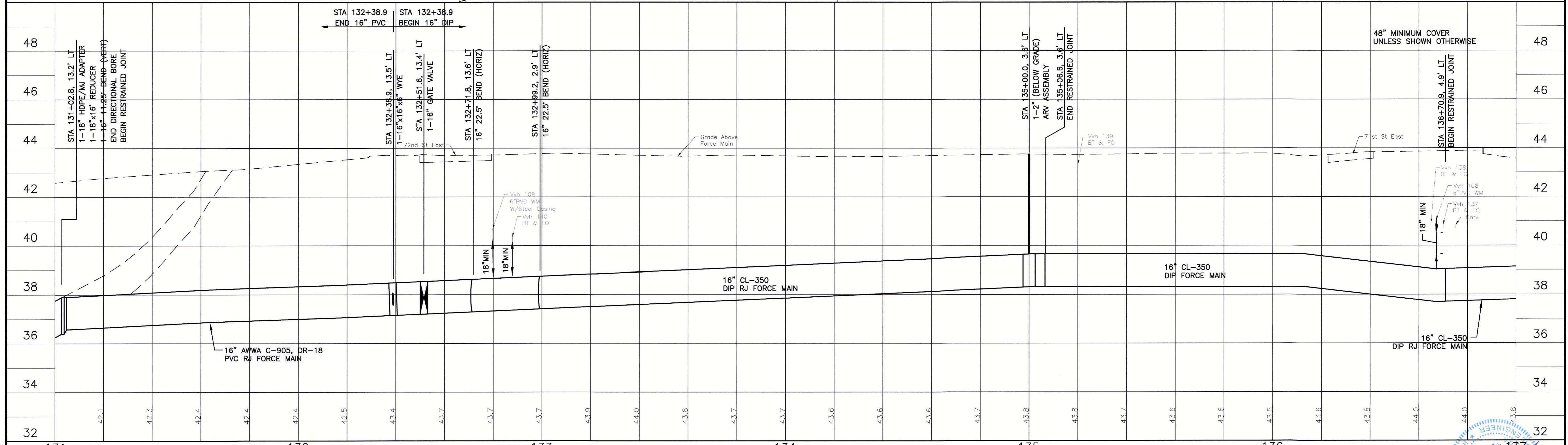
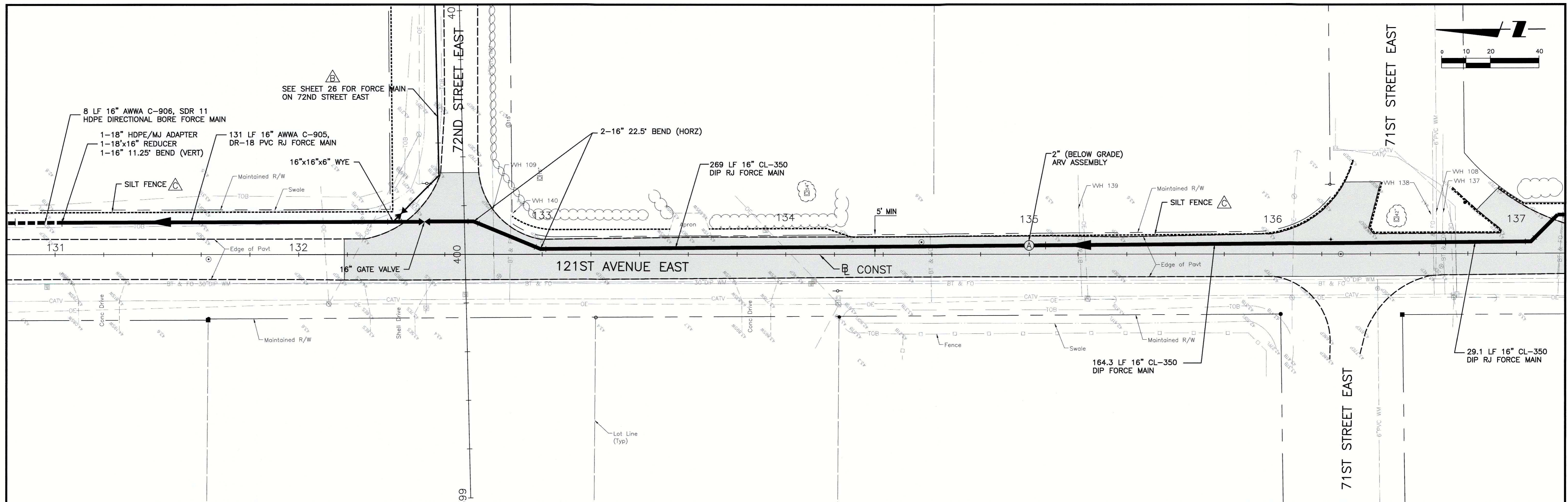
REV	NO.	DESCRIPTION	DATE	BY	CHECKED	DATE
D		UPDATE DESIGN/CODE UPDATES FOR REPERMITTING	08/13/15	KG		
C		ADD SILT FENCE	6/26/13	SRP		
A		REVISED PER MANATEE COUNTY COMMENTS DATED 5/06/08 & 1/13/09	1/22/09	SRP/1755		

Stantec

Stantec Consulting Services Inc. • 5172 Station Way, Sarasota, FL 34233
Tel. 941.366.1922 • Fax. 941.225.6182 • Florida Certificate No. 27013 • www.stantec.com

CLIENT:	MANATEE COUNTY PUBLIC WORKS
PROJECT:	VILLAGE OF PARRISH WASTEWATER FORCE MAIN
DATE:	AUGUST 2015
HORIZONTAL SCALE:	1"=20'
VERTICAL SCALE:	1"=2'
TWP:	33
R&D:	19

TITLE:	PLAN AND PROFILE 121ST AVENUE EAST STA 125+00 TO 131+00
CROSS REFERENCE FILE NO.:	
PROJECT NUMBER:	177310561
SHEET NUMBER:	19 OF 30



REV NO.	REVISION	DATE	DESIGNED BY / EMP. NO.	CHECKED BY / EMP. NO.	WM APPROVED BY:
D	UPDATE DESIGN/CODE UPDATES FOR REPERMITTING	08/13/15	KG		
C	ADD SILT FENCE	6/26/13	SRP		
B	UPDATED PLANS TO INCLUDE TECO GAS MAIN AND COLLECTOR FORCE MAINS	7/01/10	SRP/1755		
A	REVISED PER MANATEE COUNTY COMMENTS DATED 5/06/08 & 1/13/09	1/22/09	SRP/1755		

ACTIVITY	INITIALS/EMP. NO.	DATE
DESIGNED BY:	RJH	JULY 2015
DRAWN BY:	KG	JULY 2015
CHECKED BY:	RJH	JULY 2015
CONTRACT ADMIN. BY:		
WM APPROVED BY:		

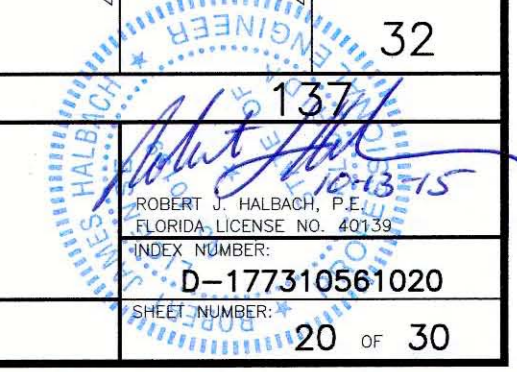


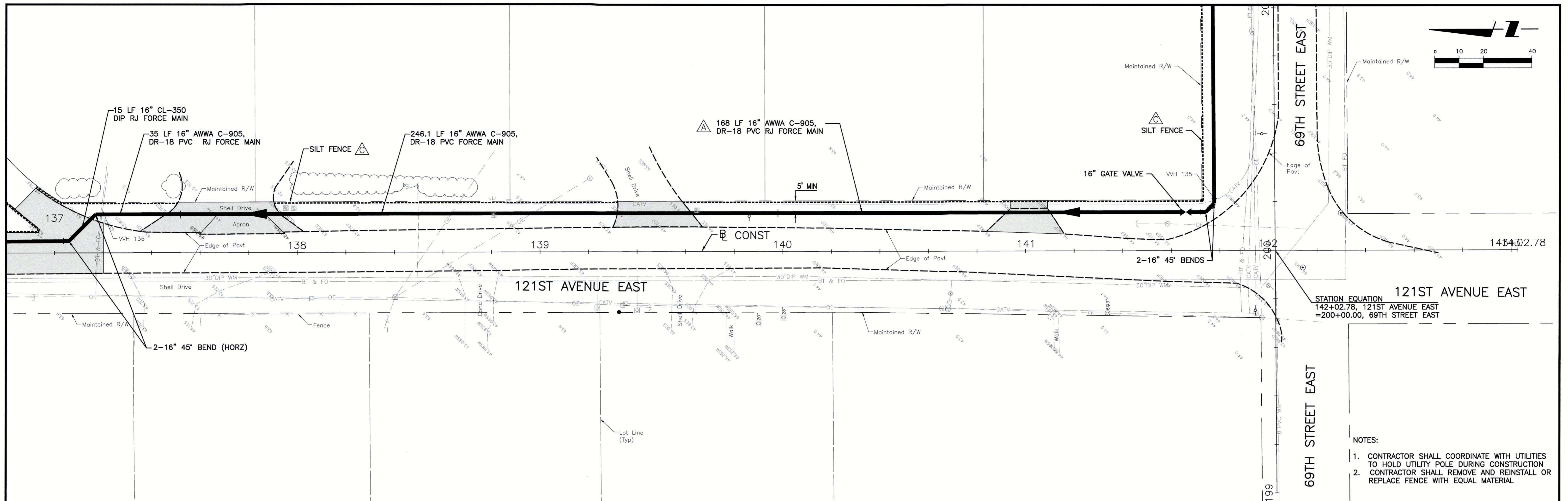
Stantec Consulting Services Inc. • 5172 Station Way, Sarasota, FL 34233
 Tel. 941.366.1922 • Fax. 941.226.6182 • Florida Certificate No. 27013 • www.stantec.com

CLIENT: MANATEE COUNTY PUBLIC WORKS
 PROJECT: VILLAGE OF PARRISH WASTEWATER FORCE MAIN

DATE: AUGUST 2015
 HORIZONTAL SCALE: 1"=20'
 VERTICAL SCALE: 1"=2'

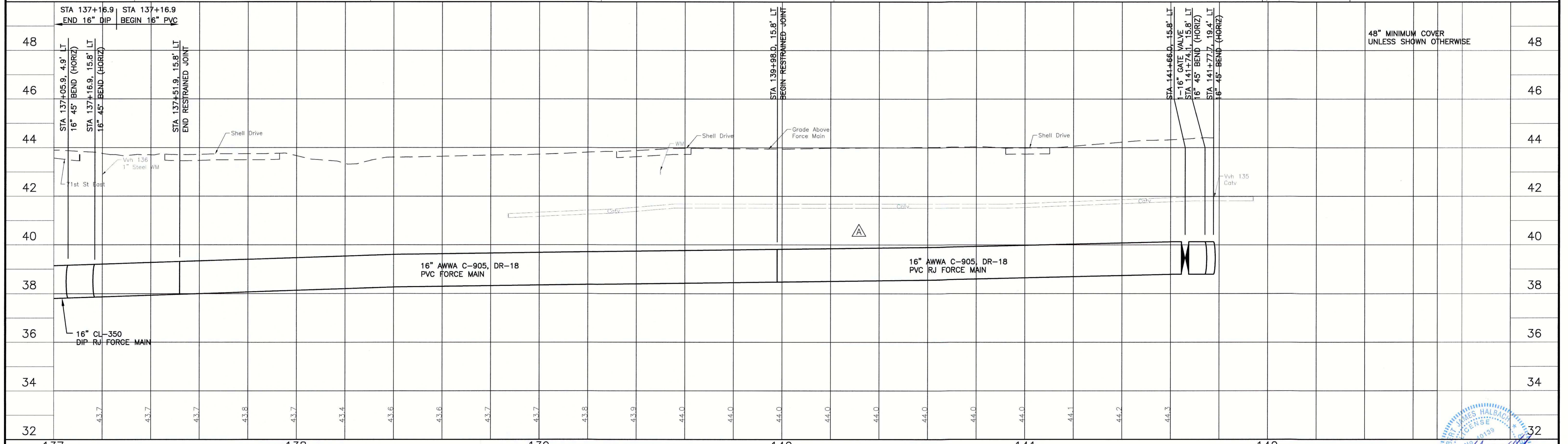
TITLE: PLAN AND PROFILE 121ST AVENUE EAST STA 131+00 TO 137+00
 PROJECT NUMBER: 177310561
 SHEET NUMBER: 20 OF 30





STATION EQUATION
 142+02.78, 121ST AVENUE EAST
 =200+00.00, 69TH STREET EAST

- NOTES:
1. CONTRACTOR SHALL COORDINATE WITH UTILITIES TO HOLD UTILITY POLE DURING CONSTRUCTION
 2. CONTRACTOR SHALL REMOVE AND REINSTALL OR REPLACE FENCE WITH EQUAL MATERIAL



REV. NO.	REVISION	DATE	DRAWN BY / EMP. NO.	CHECKED BY / EMP. NO.	WM APPROVED BY:
D	UPDATE DESIGN/CODE UPDATES FOR PERMITTING	08/13/15	KG		
C	ADD SILT FENCE	6/26/13	SRP		
A	REVISED PER MANATEE COUNTY COMMENTS DATED 5/06/08 & 1/13/09	1/22/09	SRP/1755		



Stantec Consulting Services Inc. • 5172 Station Way, Sarasota, FL 34233
 Tel. 941.366.1922 • Fax. 941.225.8182 • Florida Certificate No. 27013 • www.stantec.com

CLIENT: MANATEE COUNTY PUBLIC WORKS
 PROJECT: VILLAGE OF PARRISH WASTEWATER FORCE MAIN

DATE: AUGUST 2015
 HORIZONTAL SCALE: 1"=20'
 VERTICAL SCALE: 1"=2'

TITLE: PLAN AND PROFILE
 121ST AVENUE EAST
 STA 137+00 TO 143+00

PROJECT NUMBER: 177310561
 SHEET NUMBER: 21 OF 30