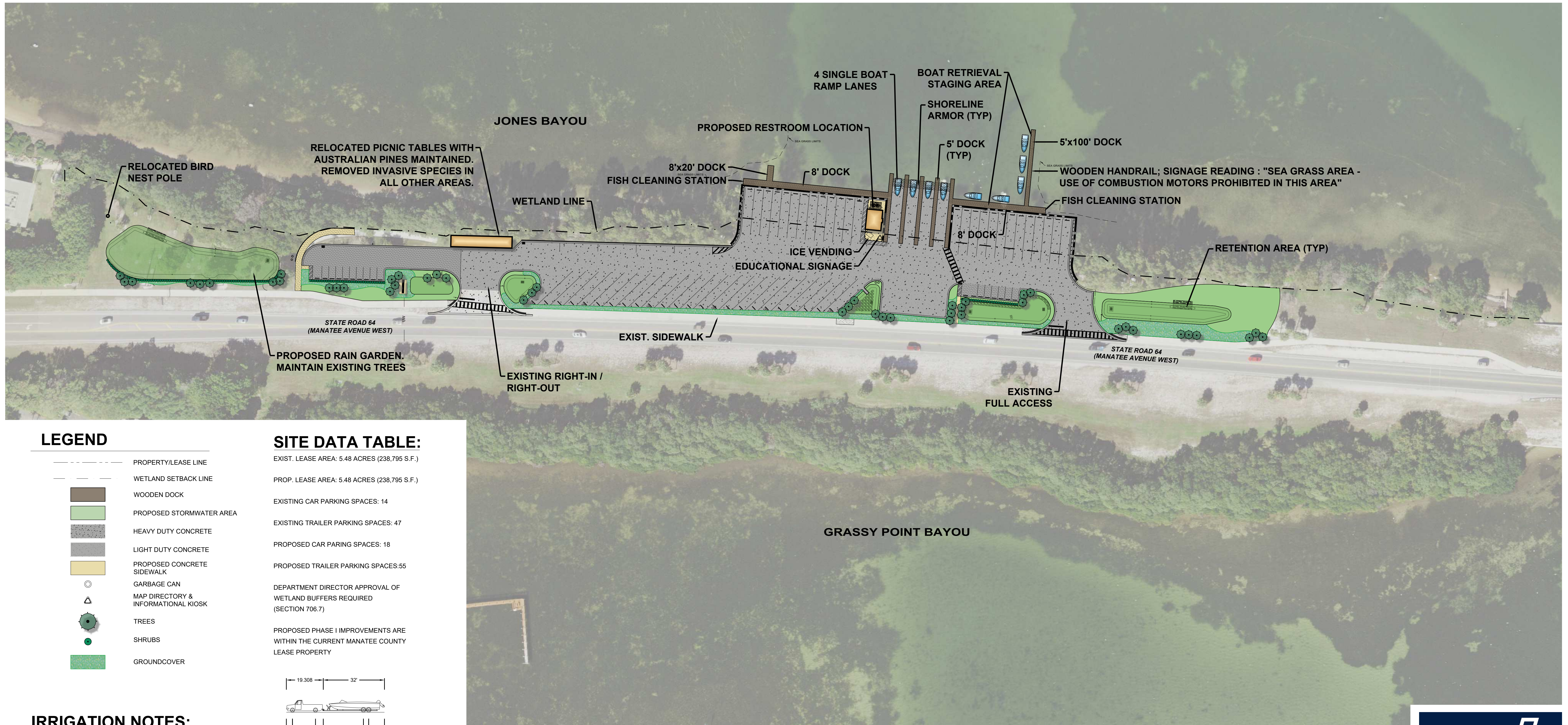
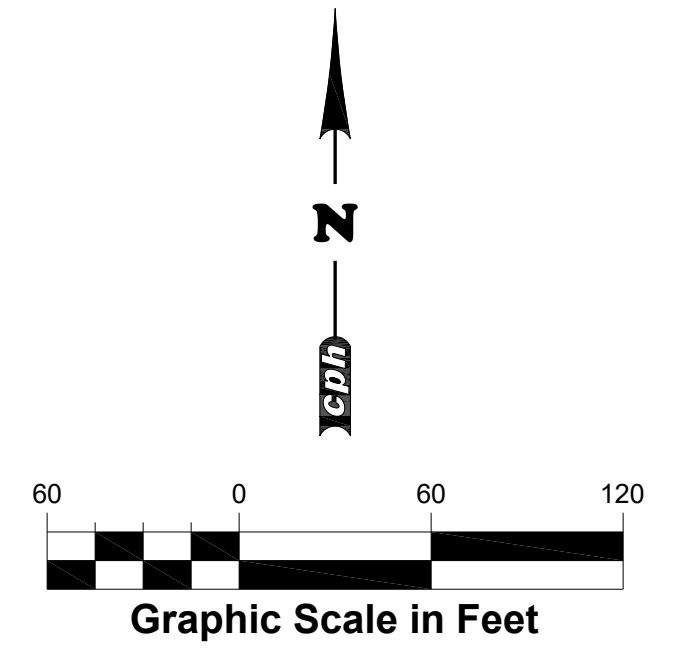




# PHASE I CONCEPT PLAN KINGFISH BOAT RAMP AND PARKING LOT IMPROVEMENTS

752 MANATEE AVE. WEST, HOLMES BEACH, MANATEE COUNTY, FLORIDA



### LEGEND

- PROPERTY/LEASE LINE
- WETLAND SETBACK LINE
- WOODEN DOCK
- PROPOSED STORMWATER AREA
- HEAVY DUTY CONCRETE
- LIGHT DUTY CONCRETE
- PROPOSED CONCRETE SIDEWALK
- GARBAGE CAN
- MAP DIRECTORY & INFORMATIONAL KIOSK
- TREES
- SHRUBS
- GROUNDCOVER

### SITE DATA TABLE:

EXIST. LEASE AREA: 5.48 ACRES (238,795 S.F.)

PROP. LEASE AREA: 5.48 ACRES (238,795 S.F.)

EXISTING CAR PARKING SPACES: 14

EXISTING TRAILER PARKING SPACES: 47

PROPOSED CAR PARKING SPACES: 18

PROPOSED TRAILER PARKING SPACES: 55

DEPARTMENT DIRECTOR APPROVAL OF WETLAND BUFFERS REQUIRED (SECTION 706.7)

PROPOSED PHASE I IMPROVEMENTS ARE WITHIN THE CURRENT MANATEE COUNTY LEASE PROPERTY

F-150 SUPERCREW 4x4 W/ TRAILER	51.309'
OVERALL LENGTH	8.167'
OVERALL WIDTH	6.406'
OVERALL BODY HEIGHT	0.750'
MIN. BODY GROUND CLEARANCE	8.167'
MAX. TRACK WIDTH	4.006
LOCK-TO-LOCK TIME	23.5"
CURB TO CURB TURNING RADIUS	

### IRRIGATION NOTES:

DRIP IRRIGATION SYSTEM WITH AVAILABLE POTABLE WATER TO BE USED.

IRRIGATION TO BE ZONED ALLOWING FOR SECTIONS TO BE TURNED OFF EASILY ONCE ESTABLISHED, WHILE MAINTAINING IRRIGATION TO SPECIES THAT MAY REQUIRE YEAR ROUND REQUIREMENTS.

