



# MANATEE COUNTY FLORIDA

email

January 29, 2014

TO: All Interested Proposers

SUBJECT: Request for Proposal (RFP) #14-0105DC  
Construction Management at Risk Services for  
Southeast Water Reclamation Facility Maintenance Building

## ADDENDUM #1

Proposers are hereby notified that this Addendum shall be made a part of the above named solicitation document. The following items are issued to add to, modify, and clarify the proposed requirements. Proposals to be submitted on the specified bid date, shall conform to the additions and revisions listed herein.

1. Clarification for RFP Article C.03:
  - Item f: Delete this item in its entirety; a listing of subcontractors will not be required at this time.
  - Items i and j: The information requested for these two items have some duplication and therefore the response can be combined.
2. The Attendance Sheet for the Information Conference is attached.
3. For informational purposes only, attached is the preliminary project design.

Proposals will be received at Manatee County Purchasing, 1112 Manatee Avenue West, Suite 803, Bradenton, Florida 34205 until **February 5, 2014 at 3:00 P.M.** If you have submitted a proposal prior to receiving this Addendum, you may request in writing that your sealed proposal be returned to your firm.

Sincerely,



Melissa Wendel, CPPO  
Purchasing Official

/dcr  
Attachment

Financial Management Department - Purchasing Division  
1112 Manatee Avenue West, Suite 803, Bradenton, FL 34205  
PHONE: 941.749.3074 \* FAX: 941.749.3034  
[www.mymanatee.org](http://www.mymanatee.org)

**Manatee County SEWRF Maintenance Building**

**MANATEE COUNTY LAND DEVELOPMENT CODE  
Environmental Report**

August 2013

Prepared for:

Ugarte & Associates Inc.  
434 9th Avenue West  
Palmetto, FL 34221

Prepared by:

**E Co Consultants, Inc.**  
1523 8<sup>th</sup> Avenue West  
Suite B  
Palmetto, FL 34221  
941.722.0901 fax 941.722.4931

## **Introduction**

The applicant proposes to construct a new maintenance building associated with the Southeast Wastewater Reclamation Facility (SEWRF) at the Lena Road Landfill, which is located in Sections 22 and 23, Township 34S, Range 19E, Manatee County. Currently, the subject parcel is undeveloped open land.

E Co Consultants, Inc. visited the subject parcel on August 5, 2013 for the purpose of characterizing on-site and adjacent habitats and determining if any jurisdictional wetlands or surface water are present. During our site visit, we did not observe any on-site wetlands and surface waters are limited to a small swale along the western project boundary adjacent to an existing shell road.

The following report addresses items found in the Manatee County Land Development Code (LDC) Section 719 pertaining to wetland and upland habitats on lands proposed for development.

Wetlands, surface waters, and upland habitats located on this parcel and within 500 feet of this parcel are categorized below using the Florida Department of Transportation "Florida Land Use, Cover and Forms Classification System (FLUCFCS)." Also included with this document is an aerial photo depicting the approximate project boundary and land use codes for the project site.

## **Wetland and Other Surface Water Habitats**

### **FLUCFCS Code 510 Streams and Waterways**

- Vegetation: The on-site swale is located along the western project boundary near a shell road. It is vegetated with herbaceous ruderal species.
- Impacts: This swale appears to have been excavated from uplands.
- Hydrology: The function of the swale is to drain the adjacent road and field. It does not hold water, but appears to flow in response to rain events.
- Wildlife: No wildlife were observed utilizing the swale.

## **Upland Habitats**

### **FLUCFCS Code 190 Open Land**

The primary upland habitat present on the subject parcel is open land vegetated with mostly bahia grass (*Paspalum notatum*). Other herbaceous ruderal species are also present in smaller quantities.

### **FLUCFCS Code 814 Roads and Highways**

An existing shell road is located on the western project boundary.

## **Off-site Wetland and Upland Habitats**

### **North**

This site is bounded on the north by a sewage treatment plant (834) and off-site portions of the shell road (814).

### **West**

To the west of this project are a lake (523) and open land (190).

### **South**

The southern boundary is adjacent to open land (190), pine flatwoods (411), pine/oak (414), a drainage canal (510), off-site portions of the swale described above, off-site portions of the shell road (814), and mixed forested wetlands (630).

### **East**

To the east are a sewage treatment plant (834), a lake (524), and open land (190).

## **Conservation Easements**

No conservation easements are proposed.

## **Protected Species**

E Co Consultants, Inc. reviewed the subject parcel for the potential presence of listed species. This review included field survey and research of available databases for documented listed species presence relative to the proposed project.

To assist in determining potential utilization of the subject parcel by certain listed species, a search of available databases was accomplished. These database searches revealed no documented utilization of the project area or areas adjacent to the project area by listed species.

In addition to the database searches, a Senior Scientist with E Co Consultants, Inc. performed a field survey of the project area on August 5, 2013. This survey included pedestrian and vehicular transects throughout the project area. No protected species were observed nesting or denning within the on-site habitats.

## **Proposed Impacts to Wetlands**

None proposed.

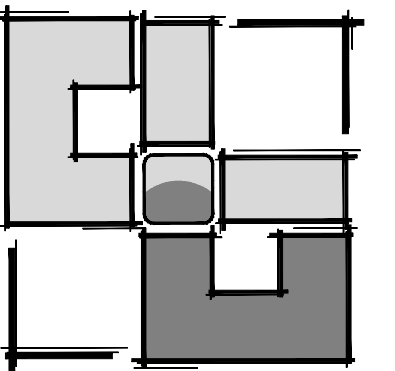








# 50% ARCHITECTURAL DESIGN DEVELOPMENT DRAWINGS FOR MANATEE COUNTY SOUTHEAST WATER RECLAMATION FACILITY



**UGARTE  
& ASSOCIATES, INC.**  
**ARCHITECTURE  
PLANNING**

434 9th AVENUE WEST  
PALMETTO, FLORIDA 34221  
PHONE (941) 729-5691  
FAX (941) 729-5692  
WWW.UGARTEARCHITECTURE.COM  
— AA-C001654 —

COVER SHEET

PROJECT DESCRIPTION:  
THIS PROJECT CONSIST OF...

## BUILDING CODE ANALYSIS - FBC 2010

MANATEE COUNTY

PROJECT NAME: SEWRF (SOUTHEAST WATER RECLAMATION FACILITY BUILDING)

GENERAL BUILDING INFORMATION

BUILDING OCCUPANCY (CHAPTER 3): S-2

SPRINKLER SYSTEM: YES

BUILDING CONSTRUCTION TYPE (CHAPTER 6): IIB

BUILDING AREAS, BUILDING SIZE AND EGRESS REQUIREMENTS

MAXIMUM ALLOWABLE FLOOR AREA/STORIES (TABLE 503): ###

MAXIMUM ALLOWABLE BUILDING HEIGHT (TABLE 503): ###

ACTUAL BUILDING HEIGHT AND NUMBER OF STORIES: ###

COMPUTATION OF AREA MODIFICATIONS (SECTION 506): ###

OCCUPANT LOAD (TABLE 1004.1.1): ### GROSS FLOOR AREA ENTIRE BUILDING: ### SQ. FT.

MINIMUM # OF EXITS REQUIRED (TABLE 1015.1): ### GROSS FLOOR AREA PER FLOOR: ### SQ. FT.

MAXIMUM TRAVEL DISTANCE (TABLE 1016.1): ### L.F. NET FLOOR AREA ENTIRE BUILDING: ### SQ. FT.

MAXIMUM COMMON PATH OF TRAVEL (1014.3): ### L.F. NET FLOOR AREA PER FLOOR: ### SQ. FT.

FIRE RESISTANCE RATING OF BUILDING COMPONENTS AND ELEMENTS PER TABLE 601:

PARTY AND FIRE WALLS: ### INTERIOR BEARING WALLS: ###

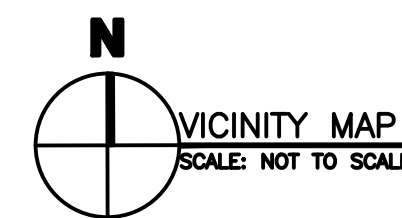
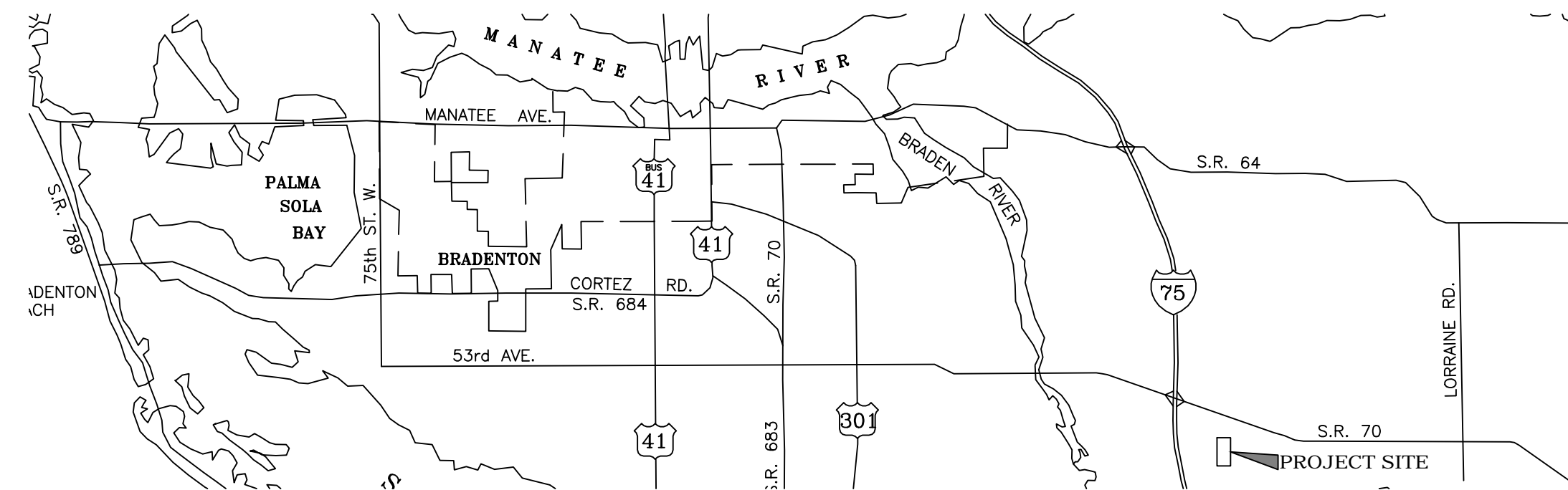
INTERIOR NON-LOAD BEARING WALLS: ### COLUMNS: ###

BEAMS, GIRDERS, TRUSSES, ARCHES: ### FLOOR, FLOOR/CEILING ASSEMBLIES: ###

ROOFS, ROOF/CEILING ASSEMBLIES: ### EXTERIOR BEARING WALLS: ###

EXTERIOR NON-LOAD BEARING WALLS: ### INTERIOR SEPARATION WALL: ###

REQUIRED SEPARATION FROM A COMMON OR ASSUMED PROPERTY LINE PER TABLE 602: ###



WIND UPLIFT DIAGRAM  
2010 F.B.C. RESIDENTIAL

WIND SPEED: 150 MPH ULT., 116 ASD  
RISK FACTOR: CATEGORY II  
WIND SPEED MAP: 1609A  
EXPOSURE: C  
ENCLOSED  
INTERNAL PRESSURE COEF: 0.18

A = 3'

SHEATHING/CLADDING - ASCE 7-10

ZONE '1' = ## -P

ZONE '2' = ## -P

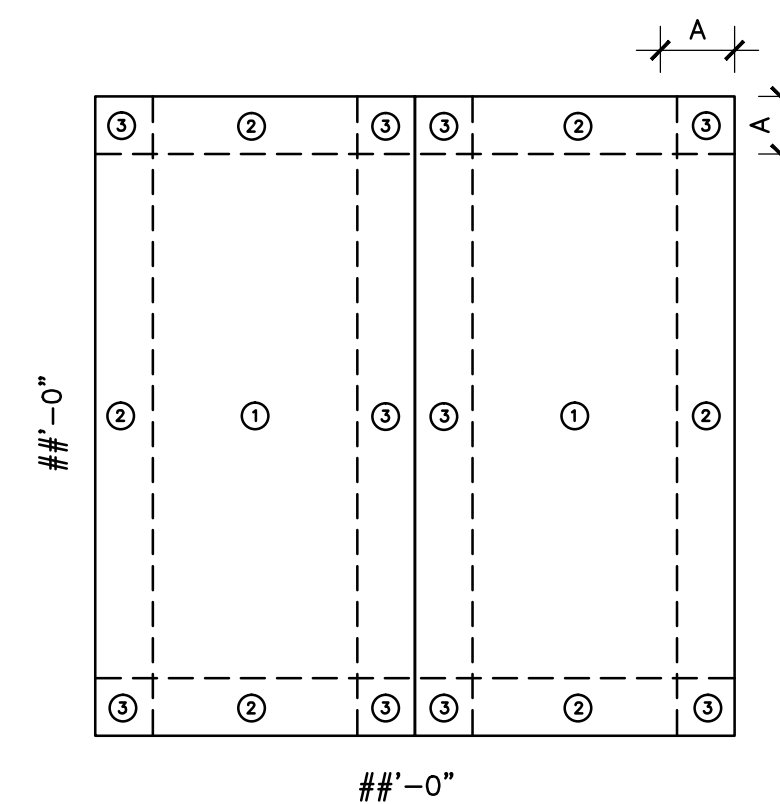
ZONE '3' = ## -P

ZONE '4' = ## -P

ZONE '5' = ## -P

ZONE '2' OVERHANG -P

ZONE '3' OVERHANG -P



PRODUCT APPROVAL LIST

APPROVAL No.	MANUFACTURER	PRODUCT CATEGORY	PRODUCT MODEL # or NAME	PRESSURE		APPROVAL ENTITY	EXPIRATION/ APPROVAL DATE
				DESIGN PRESSURE	MAX SYSTEM PRESSURE		
-	YKK AP	WINDOW	--	--	SEE STRUCTURAL	--	--
-	INGERSOLL-RAND	DOOR	--	--	SEE STRUCTURAL	--	--
-	--	METAL BLDG	--	--	SEE STRUCTURAL	--	--

## INDEX TO SHEETS

A001 COVER SHEET  
A101 SITE PLAN  
A102 LIFE SAFETY PLAN  
A201 FLOOR PLAN  
A202 ENLARGED FLOOR PLAN  
A301 WINDOW AND DOOR SCHEDULES  
A401 EXTERIOR ELEVATIONS  
A402 INTERIOR ELEVATIONS  
A501 BUILDING SECTIONS

SOUTHEAST WATER  
RECLAMATION FACILITY  
BUILDING  
MANATEE COUNTY, FLORIDA

REVISIONS

PRELIMINARY  
NOT FOR  
CONSTRUCTION

PROJECT NO: 2013-28  
DATE: 1/7/14  
DRAWN BY: -  
CHK'D BY: -

CARLOS D. UGARTE  
LIC. NO. AR-0010725

SHEET

A001

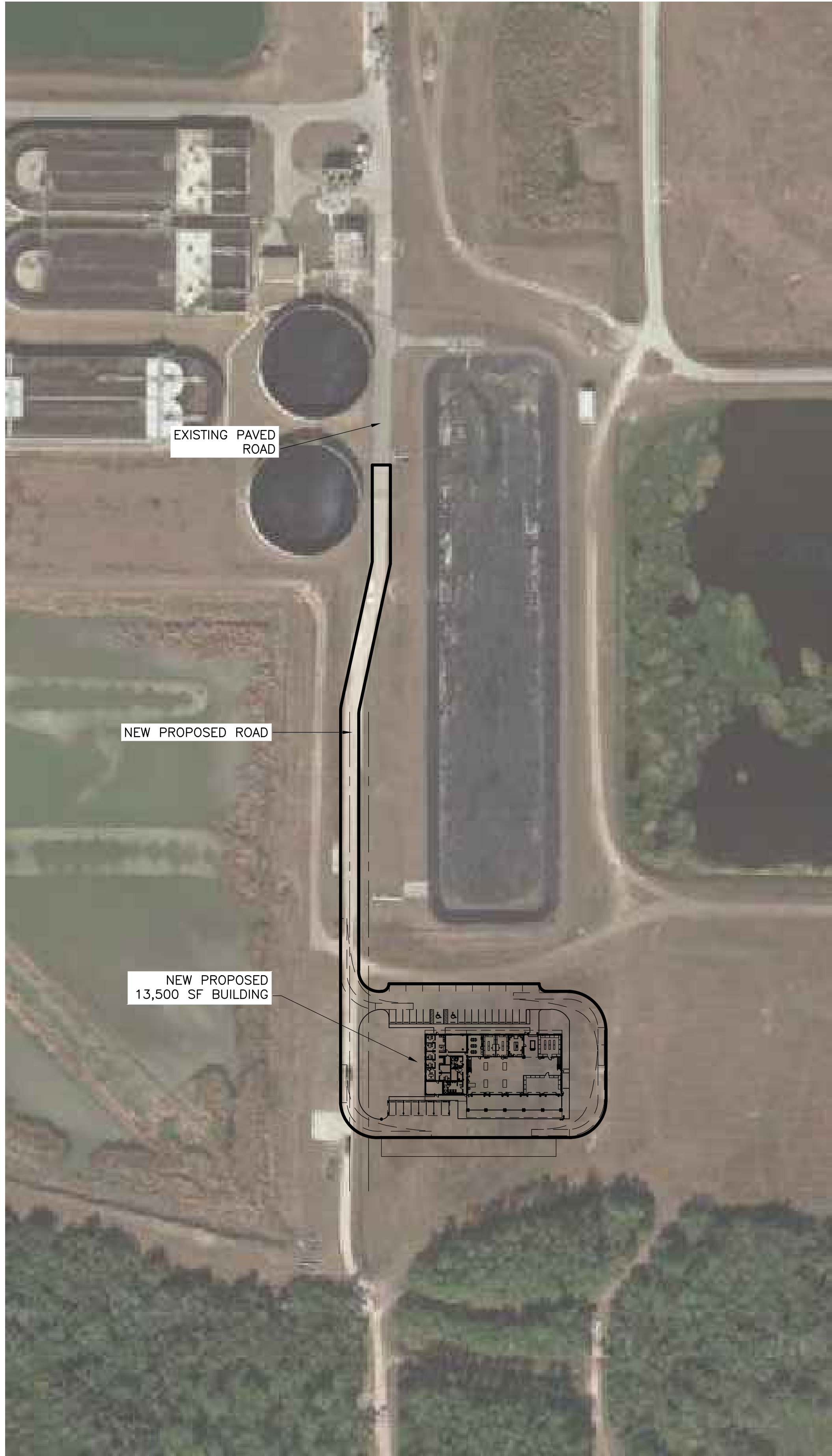
CAD DWG FILE: A001 COVER SHEET.DWG  
1/7/2014 2:09 PM



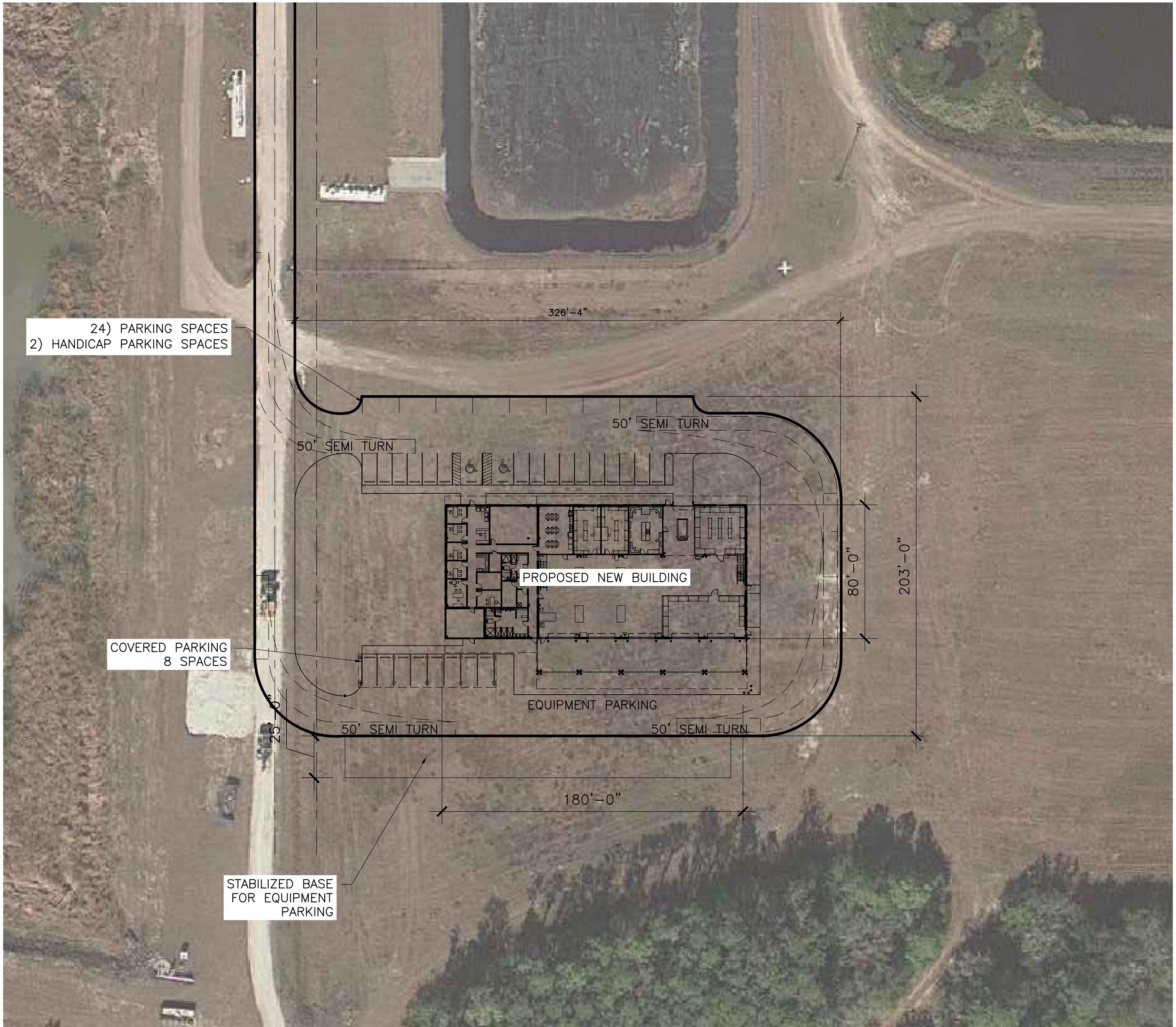
FLORIDA ADMINISTRATIVE CODE 69A-3.012  
PROVIDE SYMBOL TO CLEARLY DENOTE LIGHT-FRAME TRUSS-TYPE ON PROJECT. LOCATION OF SYMBOL IS TO  
BE WITHIN 24 INCHES OF THE LEFT OF THE MAIN ENTRY DOOR AND BETWEEN 4 TO 6 FEET OFF THE GROUND.

FIRE EXTINGUISHERS REQUIRED FOR PROJECT PER NFPA 10

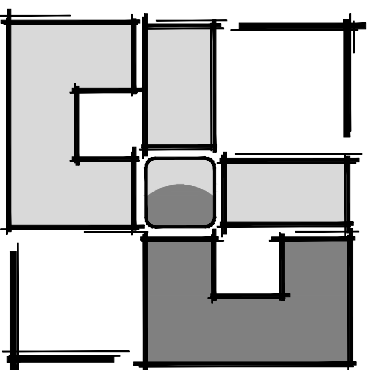




N  
KEY SITE PLAN  
1" = 100'-0"



N  
ENLARGED SITE PLAN  
1" = 40'-0"



**UGARTE**  
& ASSOCIATES, INC.  
ARCHITECTURE  
PLANNING

434 9th AVENUE WEST  
PALMETTO, FLORIDA 34221  
PHONE (941) 729-5691  
FAX (941) 729-5692  
WWW.UGARTEARCHITECTURE.COM  
— AA-C001654 —

SITE PLAN

SOUTHEAST WATER  
RECLAMATION FACILITY  
BUILDING

MANATEE COUNTY, FLORIDA

REVISIONS

COPYRIGHT: UGARTE & ASSOCIATES, INC. 2014  
PROJECT NO: 2013-28  
DATE: 1/7/14  
DRAWN BY: -  
CHKD BY: -

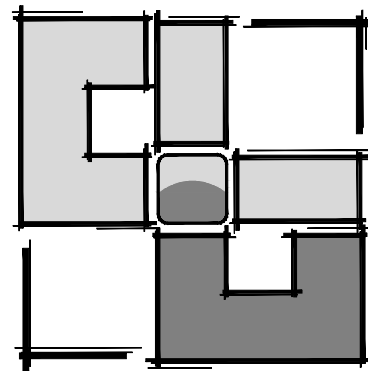
**PRELIMINARY  
NOT FOR  
CONSTRUCTION**

CARLOS D. UGARTE  
LIC. NO. AR-0010725

SHEET

A101

1/7/2014 11:30 AM CAD DWG FILE: A101 SITE PLAN.DWG



**UGARTE**  
& ASSOCIATES, INC.  
ARCHITECTURE  
PLANNING

434 9th AVENUE WEST  
PALMETTO, FLORIDA 34221  
PHONE (941) 729-5691  
FAX (941) 729-5692  
WWW.UGARTEARCHITECTURE.COM  
AA-C001654

LIFE SAFETY PLAN

SOUTHEAST WATER  
RECLAMATION FACILITY  
BUILDING

MANATEE COUNTY, FLORIDA

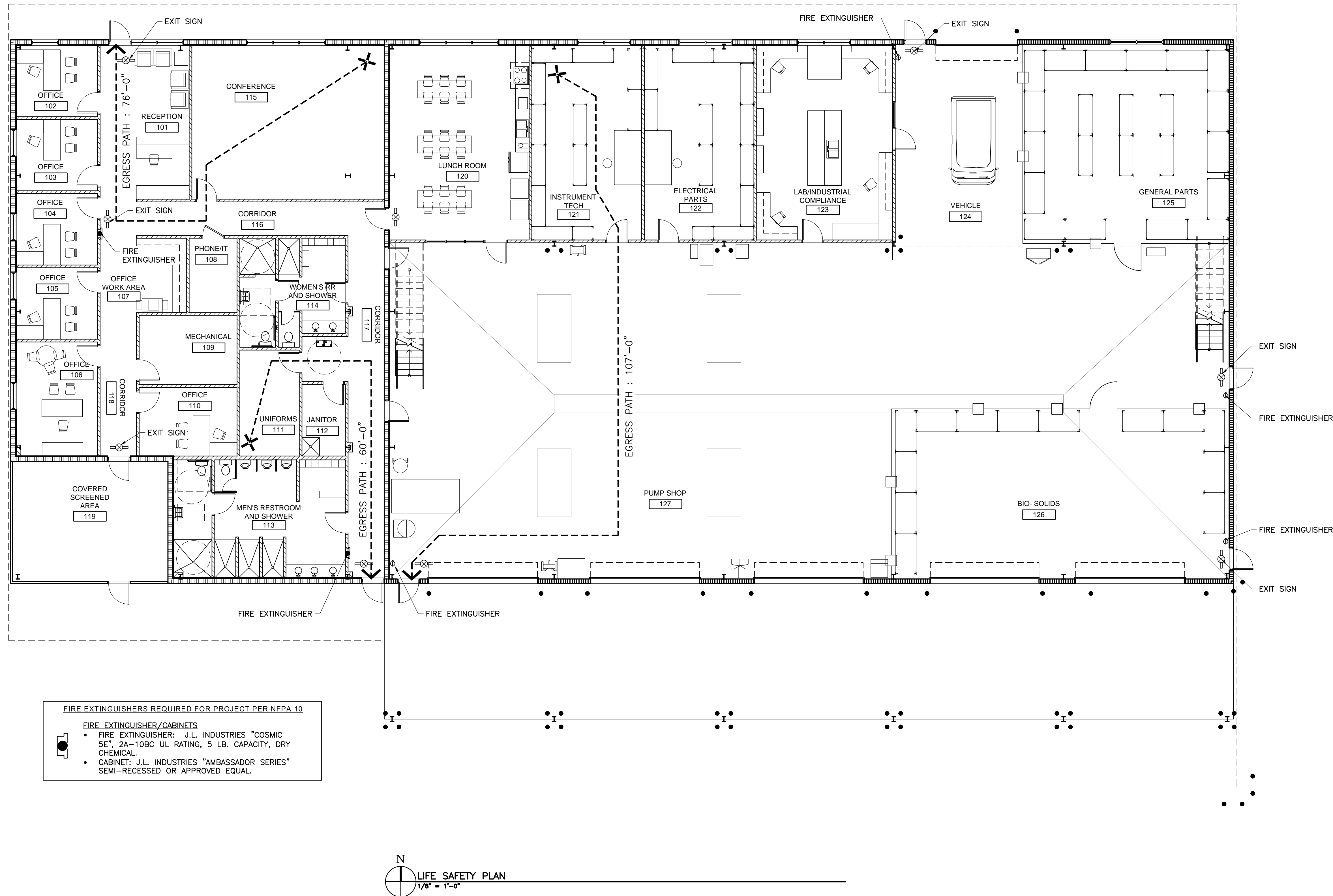
REVISIONS  
**PRELIMINARY  
NOT FOR  
CONSTRUCTION**

PROJECT NO: 2013-28  
DATE: 1/7/14  
DRAWN BY: -  
CHK'D BY: -

CARLOS D. UGARTE  
LIC. NO. AR-0010725

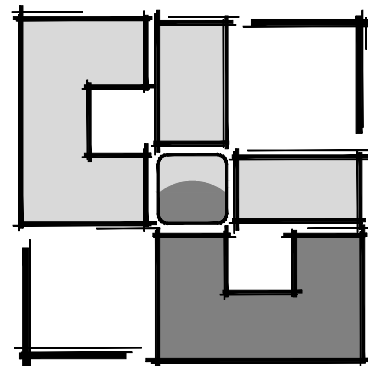
SHEET

A102



1/7/2014 2:07 PM CAD DWG FILE: A102 LIFE SAFETY PLAN.DWG





**UGARTE**  
& ASSOCIATES, INC.  
**ARCHITECTURE**  
**PLANNING**

434 9th AVENUE WEST  
PALMETTO, FLORIDA 34221  
PHONE (941) 729-5691  
FAX (941) 729-5692  
WWW.UGARTEARCHITECTURE.COM  
— AA-C001654 —

FLOOR PLAN

SOUTHEAST WATER  
RECLAMATION FACILITY  
BUILDING

MANATEE COUNTY, FLORIDA

REVISIONS

COPYRIGHT: UGARTE & ASSOCIATES, INC. 2014

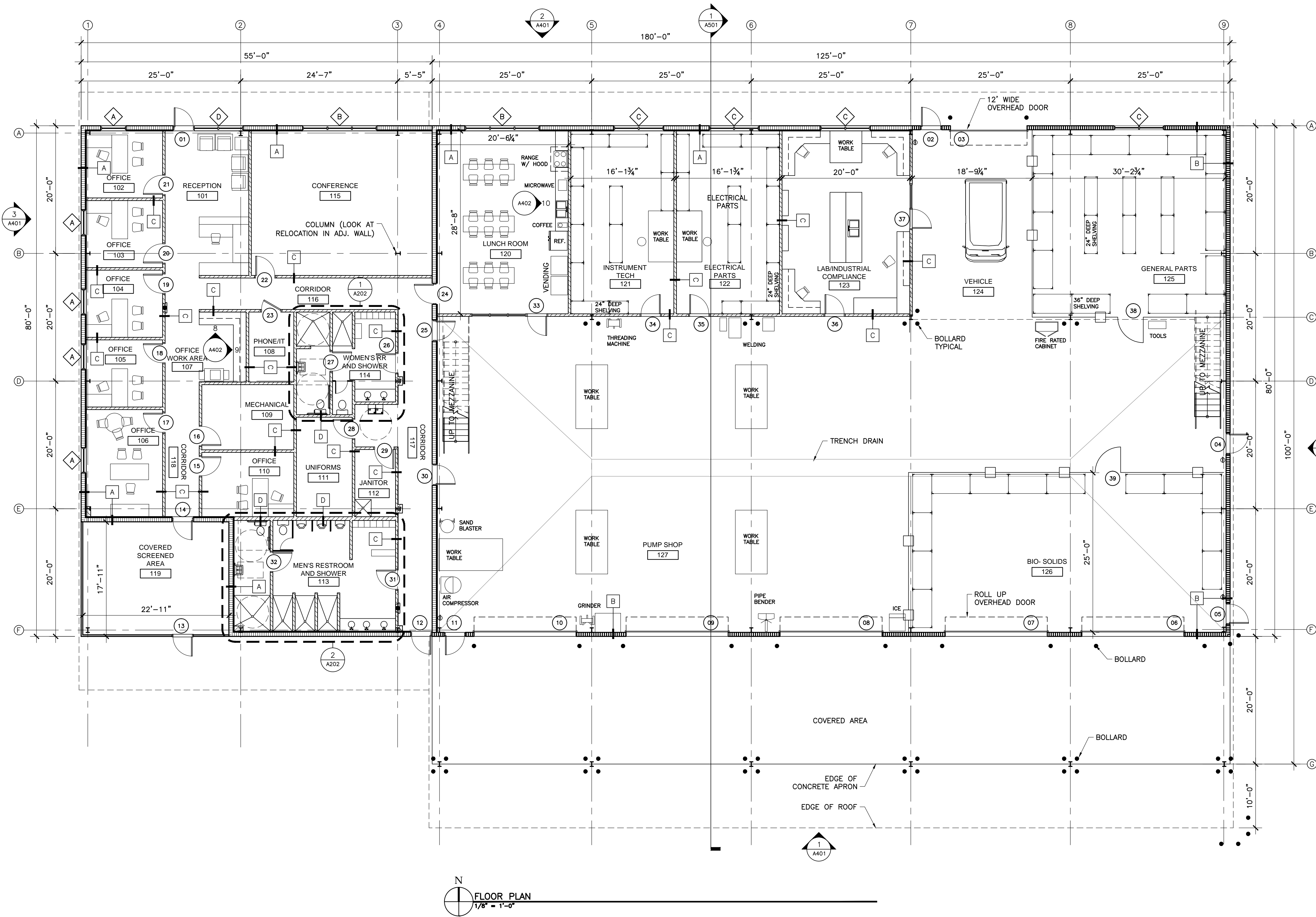
PROJECT NO: 2013-28  
DATE: 1/7/14  
DRAWN BY: -  
CHK'D BY: -

**PRELIMINARY**  
**NOT FOR**  
**CONSTRUCTION**

CARLOS D. UGARTE  
LIC. NO. AR-0010725

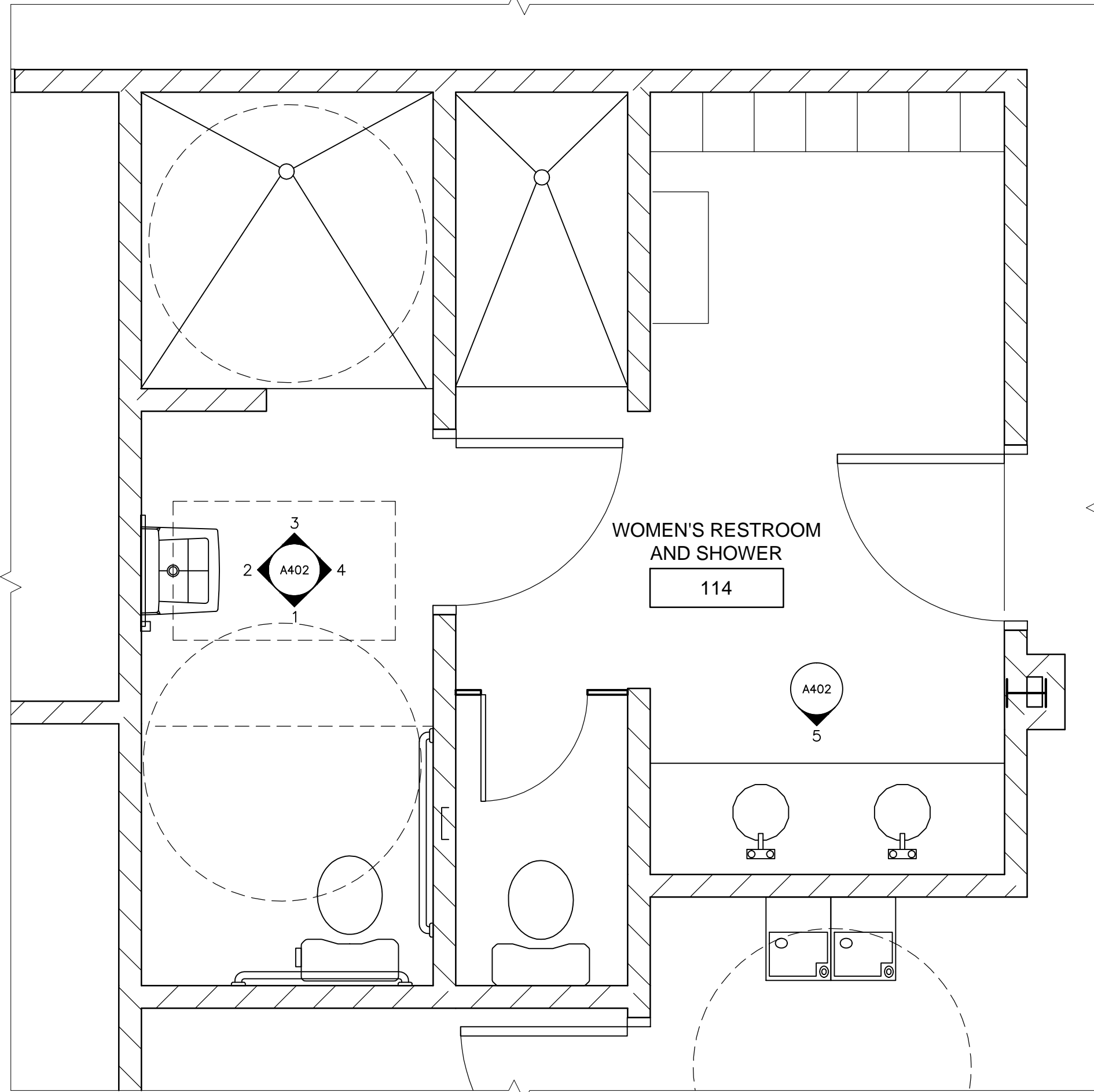
SHEET

A201

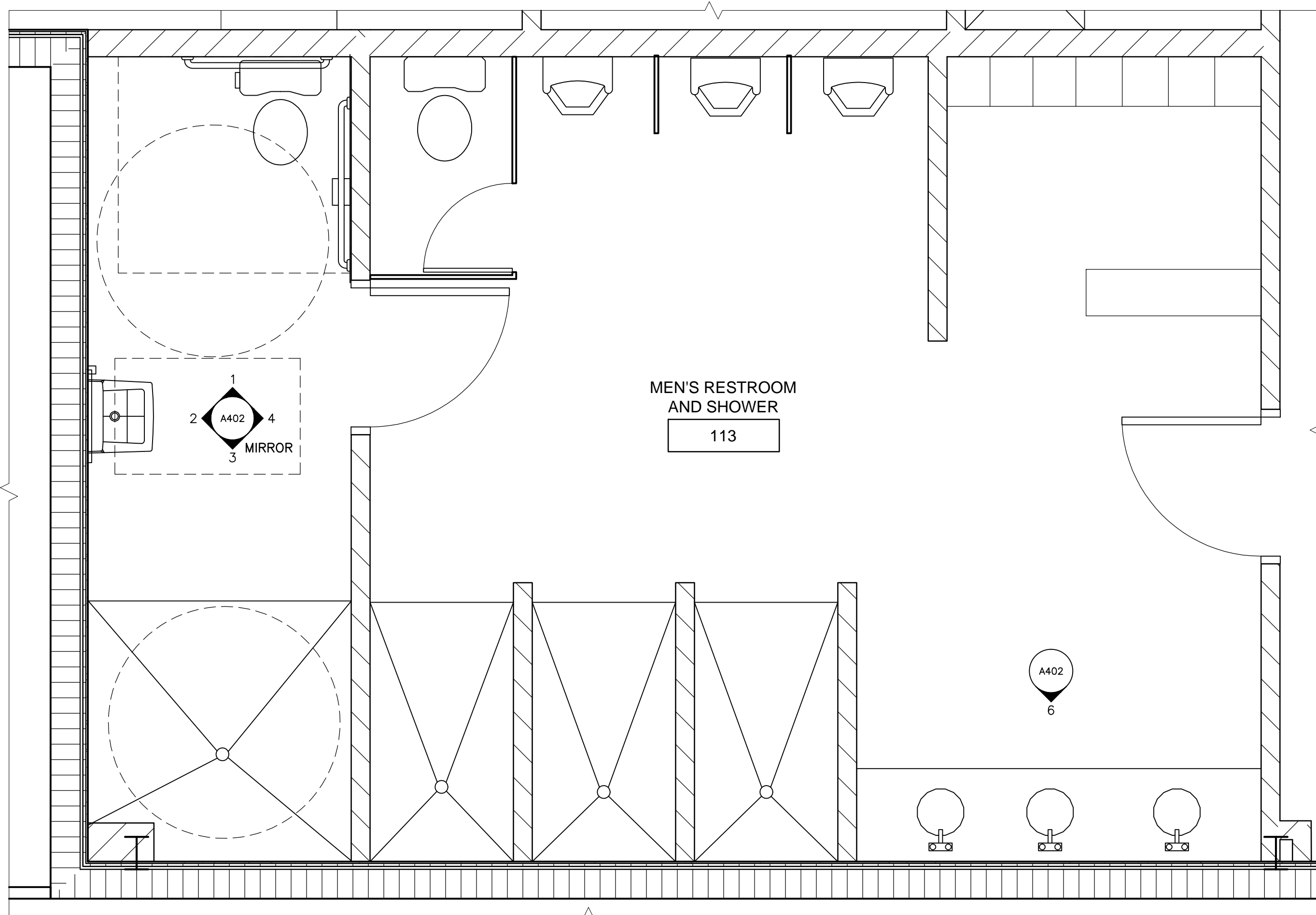


WALL SCHEDULE	
TAG	DESCRIPTION
A	NEW EXTERIOR 8" CMU WALL WITH RIDGE INSULATION, PT 1X FURRING STRIPS AT 24" OC AND 5/8" FINISH GYP BOARD. EXTERIOR FINISH TO BE CEMENTITIOUS FINISH. METAL BUILDING FINISH ABOVE. SEE BUILDING SECTIONS.
B	NEW EXTERIOR 8" CMU WALL WITH EXTERIOR TO BE CEMENTITIOUS FINISH. METAL BUILDING FINISH ABOVE. SEE BUILDING SECTIONS.
C	NEW INTERIOR WALL WITH 3/8" 25G METAL STUDS @ 16" O.C., BLOCKING AS REQUIRED, WITH BATT INSULATION AND 5/8" PAINTED GB FINISH EACH SIDE. (TYPICAL) (USE 20G METAL STUDS AND 1/2" CEMENT BOARD FOR ALL WALL TILE BACKING)
D	NEW INTERIOR WALL WITH 6" 20G METAL STUDS @ 16" O.C., BLOCKING AS REQUIRED, WITH BATT INSULATION AND 5/8" PAINTED GB FINISH EACH SIDE. (USE 20G METAL STUDS AND 1/2" CEMENT BOARD FOR ALL WALL TILE BACKING)

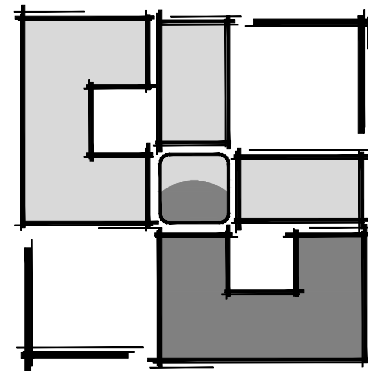
1/7/2014 2:10 PM CAD DWG FILE: A201\_FLOOR PLAN\_OPTION 1.DWG



1 ENLARGED WOMENS RESTROOM AND SHOWER  
A202 1/2" = 1'-0"



2 ENLARGED MENS RESTROOM AND SHOWER  
A202 1/2" = 1'-0"



**UGARTE**  
& ASSOCIATES, INC.  
ARCHITECTURE  
PLANNING

434 9th AVENUE WEST  
PALMETTO, FLORIDA 34221  
PHONE (941) 729-5691  
FAX (941) 729-5692  
WWW.UGARTEARCHITECTURE.COM  
AA-C001654

ENLARGED FLOOR PLAN

SOUTHEAST WATER  
RECLAMATION FACILITY  
BUILDING  
MANATEE COUNTY, FLORIDA

REVISIONS

**PRELIMINARY  
NOT FOR  
CONSTRUCTION**

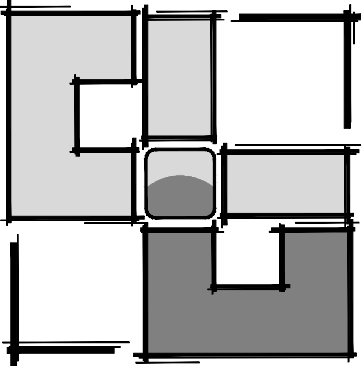
PROJECT NO: 2013-28  
DATE: 1/7/14  
DRAWN BY: -  
CHKD BY: -

CARLOS D. UGARTE  
LIC. NO. AR-0010725

SHEET

A202





**UGARTE**  
& ASSOCIATES, INC.  
**ARCHITECTURE**  
**PLANNING**

434 9th AVENUE WEST  
PALMETTO, FLORIDA 34221  
PHONE (941) 729-5691  
FAX (941) 729-5692  
WWW.UGARTEARCHITECTURE.COM  
— AA-C001654 —

WINDOW AND DOOR  
SCHEDULES

SOUTHEAST WATER  
RECLAMATION FACILITY  
BUILDING

MANATEE COUNTY, FLORIDA

REVISIONS

**PRELIMINARY**  
**NOT FOR**  
**CONSTRUCTION**

PROJECT NO: 2013-28  
DATE: 1/7/14  
DRAWN BY: -  
CHKD BY: -

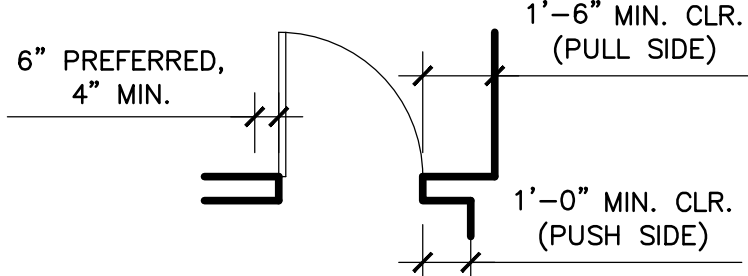
CARLOS D. UGARTE  
LIC. NO. AR-0010725

SHEET

A301

DOOR AND FRAME SCHEDULE								
#	EL	DOOR		MATL	FINISH	FRAME		NOTES
		WD	HGT			EL	DR HW	
101	-	-	7'-0"	-	-	-	-	-
102	-	-	7'-0"	-	-	-	-	-
103	-	-	7'-0"	-	-	-	-	-
104	-	-	7'-0"	-	-	-	-	-
105	-	-	7'-0"	-	-	-	-	-
106	-	-	7'-0"	-	-	-	-	-
107	-	-	7'-0"	-	-	-	-	-
108	-	-	7'-0"	-	-	-	-	-
109	-	-	7'-0"	-	-	-	-	-
110	-	-	7'-0"	-	-	-	-	-
111	-	-	7'-0"	-	-	-	-	-
112	-	-	7'-0"	-	-	-	-	-
113	-	-	7'-0"	-	-	-	-	-
114	-	-	7'-0"	-	-	-	-	-
115	-	-	7'-0"	-	-	-	-	-
116	-	-	7'-0"	-	-	-	-	-
117	-	-	7'-0"	-	-	-	-	-
118	-	-	7'-0"	-	-	-	-	-
119	-	-	7'-0"	-	-	-	-	-
120	-	-	7'-0"	-	-	-	-	-
121	-	-	7'-0"	-	-	-	-	-
122	-	-	7'-0"	-	-	-	-	-
123	-	-	7'-0"	-	-	-	-	-
124	-	-	7'-0"	-	-	-	-	-
125	-	-	7'-0"	-	-	-	-	-
126	-	-	7'-0"	-	-	-	-	-
127	-	-	7'-0"	-	-	-	-	-
128	-	-	7'-0"	-	-	-	-	-
129	-	-	7'-0"	-	-	-	-	-
130	-	-	7'-0"	-	-	-	-	-
131	-	-	7'-0"	-	-	-	-	-
132	-	-	7'-0"	-	-	-	-	-
133	-	-	7'-0"	-	-	-	-	-
134	-	-	7'-0"	-	-	-	-	-
135	-	-	7'-0"	-	-	-	-	-
136	-	-	7'-0"	-	-	-	-	-
137	-	-	7'-0"	-	-	-	-	-
138	-	-	7'-0"	-	-	-	-	-
139	-	-	7'-0"	-	-	-	-	-

TYPICAL INTERIOR DOOR CLEARANCE DETAIL



DOORS SHOWN ADJACENT TO A FLANKING WALL OR OTHER FIXED OBSTRUCTION SHALL BE LOCATED AS SHOWN ABOVE.

SIGN LOCATION NOTES:

- ALL BUILDING ENTRANCES THAT ARE ACCESSIBLE TO AND USABLE BY PERSONS WITH DISABILITIES AND AT EVERY MAJOR JUNCTION ALONG OR LEADING TO AN ACCESSIBLE ROUTE OF TRAVEL SHALL BE IDENTIFIED WITH A SIGN DISPLAYING THE INTERNATIONAL SYMBOL OF ACCESSIBILITY AND WITH ADDITIONAL DIRECTIONAL SIGNS, AS REQUIRED, TO BE VISIBLE TO PERSONS ALONG APPROACHING PEDESTRIAN WAYS.
- WHEN PERMANENT IDENTIFICATION IS PROVIDED FOR ROOMS AND SPACES, RAISED LETTERS SHALL BE PROVIDED AND SHALL BE ACCOMPANIED BY BRAILLE. SIGNS SHALL BE INSTALLED ON THE WALL ADJACENT TO THE LATCH OUTSIDE OF THE DOOR. WHERE THERE IS NO WALL SPACE ON THE LATCH SIDE, INCLUDING AT LEAF DOORS, SIGNS SHALL BE PLACED ON THE NEAREST ADJACENT WALL, PREFERABLY ON THE RIGHT. MOUNTING HEIGHT SHALL BE 60" ABOVE THE FINISH FLOOR TO THE CENTERLINE OF THE SIGN. MOUNTING LOCATION SHALL BE DETERMINED SO THAT THE PERSON MAY APPROACH WITHIN 3" OF THE SIGNAGE WITHOUT ENCOUNTERING PROTRUDING OBJECTS OR STANDING WITHIN THE SWING OF A DOOR. DO NOT MOUNT ON DOOR.

BRAILLE NOTES:

- USE CONTRASTED GRADE 2 BRAILLE. DOTS TO BE 0.1 INCH ON CENTER IN EACH CELL, 0.2 INCH SPACE BETWEEN CELLS, DOTS RAISED MINIMUM 0.025 INCH ABOVE BACKGROUND.

DOOR NOTES:

- ALL DISCREPANCIES SHALL BE BROUGHT TO ARCHITECTS ATTENTION PRIOR TO ORDERING.
- ALL DOORS SHALL BE PROVIDED WITH A MINIMUM OF THE FOLLOWING HARDWARE AS NOTED IN THE DOOR SCHEDULE.
- ALL HARDWARE SHALL BE ADA COMPLIANT, PER CURRENT FBC.
- MANUFACTURERS SPECIFICATIONS SUPERCEDE ANY INFORMATION CONTAINED ON THIS SHEET.
- CONTRACTOR TO VERIFY EXISTING CONDITIONS AND PROVIDE ARCHITECT WITH FULL DOOR AND HARDWARE SCHEDULE PRIOR TO ORDERING.
- REVIEW KEYING SYSTEM WITH OWNER AND PROVIDE LOCKS MASTERKEYED TO EXISTING SYSTEM.

BUTT HINGES

ANSI/BHMA A156.1, FULL MORTISE, SIZE AND NUMBER AS RECOMMENDED BY HINGE MANUFACTURER. BALL BEARING HINGES FOR DOORS WITH CLOSERS.

CYLINDERS

EQUIP LOCKS WITH MANUFACTURER'S STANDARD 6-PIN TUMBLER CYLINDERS. COORDINATE KEYING WITH OWNER.

LOCKSETS

- INGERSOLL RAND - FALCON "T" SERIES  
CYLINDRICAL TYPE - LEVER HANDLE  
AHSI/BHMA A156.13 HEAVY DUTY CONSTRUCTION WITH WROUGHT CASES. SUPPLY LOCKSETS UTILIZING DEADBOLTS WITH MINIMUM 1 INCH THROW.
- LEVER HANDLES: CAST OR FORGED STAINLESS STEEL SUPPORTED BY INTERNAL SPRING.
  - SPINDLES: SQUARE, "SPLIT" (WITH ALL-THREAD CONNECTOR), SET-SCREW RECEIVER/RETAINER NOTCH.
  - FURNISH LOCKS AND LATCHES WITH WROUGHT BOX STRIKES.
  - PROVIDE LATCH STRIKE PLATES WITH MINIMUM LIP PROJECTION.
  - TRIM ASSEMBLY STYLE SELECTION: OWNER TO SELECT.
  - FINISH TO BE BRUISED STAINLESS STEEL

CLOSER

INGERSOLL RAND - LCN 4110 SERIES

ANSI/BHMA A156.4, NON-SIZED, NON-HANDED WITH MINIMUM 1-1/2 INCH DIAMETER CYLINDER FULL COVER, FULL RACK AND PINION, INDEPENDENT SPEED AND LATCHING REGULATING VALVES, ADJUSTABLE BACK-CHECK FEATURE.

PANIC HARDWARE

INGERSOLL RAND - VON DUPRIN 98/99 SERIES

WALL STOP

INGERSOLL RAND - IVES WS65 WALL STOP

SILENCER

INGERSOLL RAND - SR64 DOOR SILENCER

WEATHERSTRIPPING AND SEALS

- CARPET THRESHOLD: PEMKO #2364, 4 INCHES WIDE.
- SILL STRIP/SADDLE: ZERO #339, WITH ZERO #1672.

FINISHES

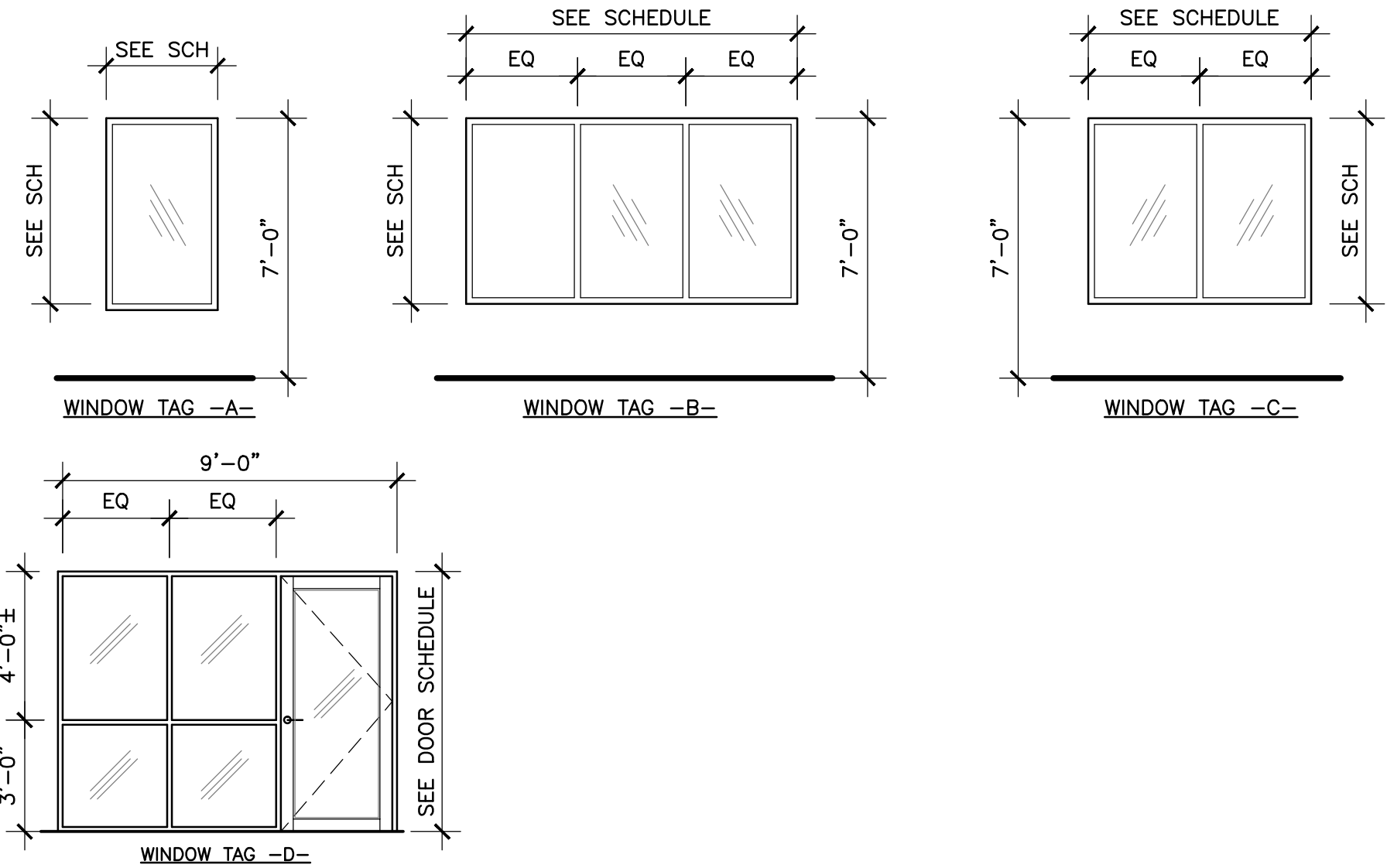
COORDINATE WITH OWNER

WINDOW AND FRAME SCHEDULE

WINDOW TAG	WINDOW				FRAME		REMARKS
	SIZE (WINDOW FRAME)		GLAZING	STYLE	MATERIAL	FINISH	
	WIDTH	HEIGHT					
A	—	—	INSULATED, IMPACT RESISTANT, LOW E	STOREFRONT	ALUMN	CLEAR ANODIZED	--
B	—	—	INSULATED, IMPACT RESISTANT, LOW E	STOREFRONT	ALUMN	CLEAR ANODIZED	--
C	—	—	INSULATED, IMPACT RESISTANT, LOW E	STOREFRONT	ALUMN	CLEAR ANODIZED	--
D	—	—	INSULATED, IMPACT RESISTANT, LOW E	STOREFRONT	ALUMN	CLEAR ANODIZED	--

NOTES:

- CONTRACTOR TO VERIFY ALL WINDOW OPENINGS IN FIELD PRIOR TO ORDERING WINDOWS.
- PROVIDE ARCHITECT WITH WINDOW SCHEDULE SHEET PRIOR TO INSTALLATION.
- ALL DISCREPANCIES SHALL BE BROUGHT TO ARCHITECTS ATTENTION PRIOR TO ORDERING.
- SEE NOA #'S ON COVER SHEET A001 FOR INSTALLATION SPECIFICATIONS
- SEE PRODUCT APPROVAL FOR SPECIFIC INSTALLATION GUIDELINES. (PRODUCT APPROVALS ON COVER SHEET).
- NOA'S AND MANUFACTURER'S SPECIFICATIONS SUPERSEDE ARCHITECTURAL DRAWINGS AND DETAILS.

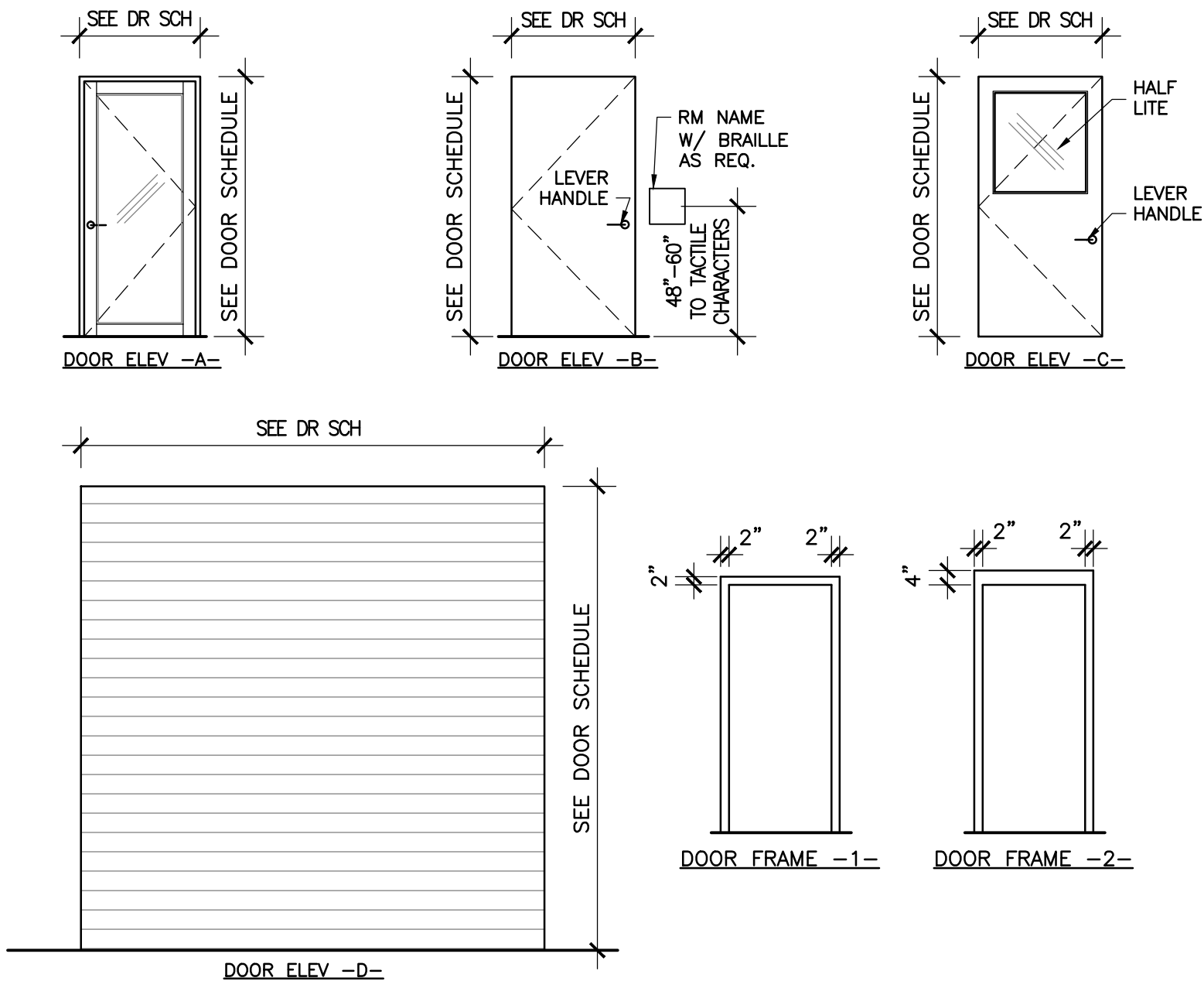


FINISH SCHEDULE

ROOM	FLOOR	BASE	WALLS	CEILING	NOTES
100	-	-	-	-	--
101	-	-	-	-	--
102	-	-	-	-	--
103	-	-	-	-	--
104	-	-	-	-	--
105	-	-	-	-	--
106	-	-	-	-	--
107	-	-	-	-	--
108	-	-	-	-	--
109	-	-	-	-	--
110	-	-	-	-	--
111	-	-	-	-	--
112	-	-	-	-	--
113	-	-	-	-	--
114	-	-	-	-	--
115	-	-	-	-	--
116	-	-	-	-	--
117	-	-	-	-	--
118	-	-	-	-	--
119	-	-	-	-	--
120	-	-	-	-	--
121	-	-	-	-	--
122	-	-	-	-	--
123	-	-	-	-	--
124	-	-	-	-	--
125	-	-	-	-	--
126	-	-	-	-	--
127	-	-	-	-	--

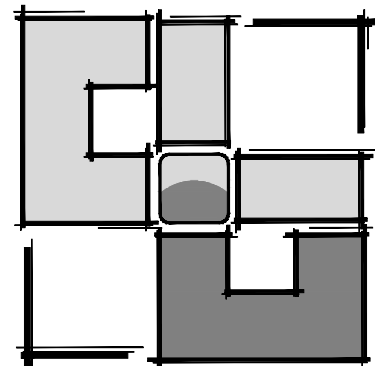
DOOR HARDWARE SCHEDULE

- BUTT HINGES, CLASSROOM LOCKSET W/AUXILIARY DEAD LATCH ABOVE, WEATHER STRIPPING, CYLINDERS, AND SILENCERS.
- BUTT HINGES, CLOSER, WEATHER STRIPPING, WALL STOP, PANIC HARDWARE, CYLINDERS, AND SILENCERS.
- BUTT HINGES, PASSAGE LOCKSET, CYLINDERS, WALL STOP, AND SILENCER.
- BUTT HINGES, PRIVACY LOCKSET, OVERHEAD CLOSER, CYLINDERS, WALL STOP, AND SILENCER.
- BUTT HINGES, CLOSET LOCKSET, CYLINDERS, WALL STOP AND SILENCER.
- BUTT HINGES, OFFICE LOCKSET, CYLINDERS, WALL STOP, AND SILENCER.
- BUTT HINGES, CLASSROOM LOCKSET, CYLINDERS, WALL STOP, AND SILENCER.



1/7/2014 11:34 AM CAD DWG FILE: A301 WINDOW AND DOOR SCHEDULES.DWG

COPYRIGHT: UGARTE & ASSOCIATES, INC. 2014



**UGARTE**  
& ASSOCIATES, INC.  
**ARCHITECTURE**  
**PLANNING**

434 9th AVENUE WEST  
PALMETTO, FLORIDA 34221  
PHONE (941) 729-5691  
FAX (941) 729-5692  
WWW.UGARTEARCHITECTURE.COM  
— AA-C001654 —

EXTERIOR ELEVATIONS

SOUTHEAST WATER  
RECLAMATION FACILITY  
BUILDING

MANATEE COUNTY, FLORIDA

REVISIONS

PROJECT NO: 2013-28  
DATE: 1/7/14  
DRAWN BY: -  
CHKD BY: -

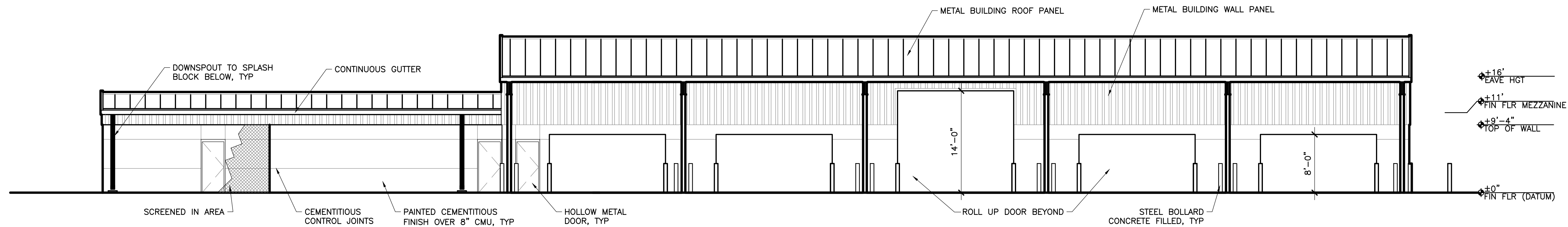
**PRELIMINARY**  
**NOT FOR**  
**CONSTRUCTION**

CARLOS D. UGARTE  
LIC. NO. AR-0010725

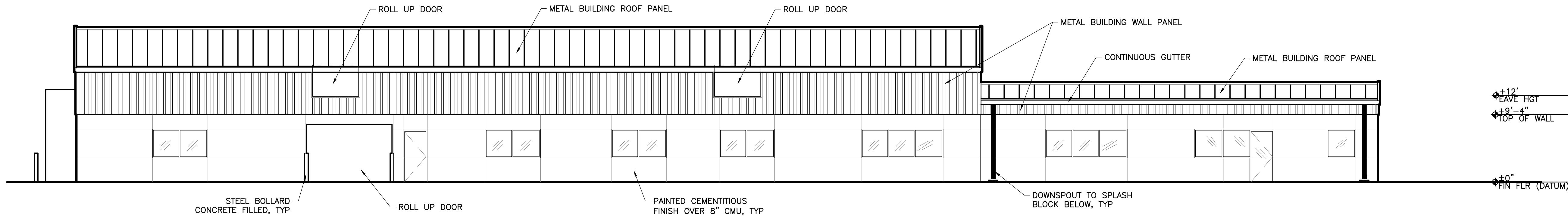
SHEET

A401

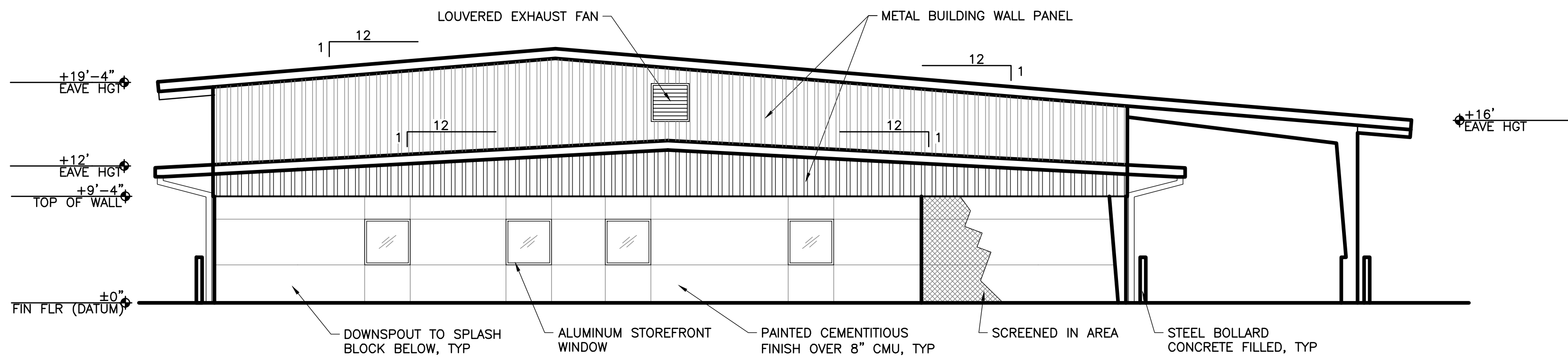
1/7/2014, 11:34 AM CAD DWG FILE: A401 - EXTERIOR ELEVATIONS.DWG



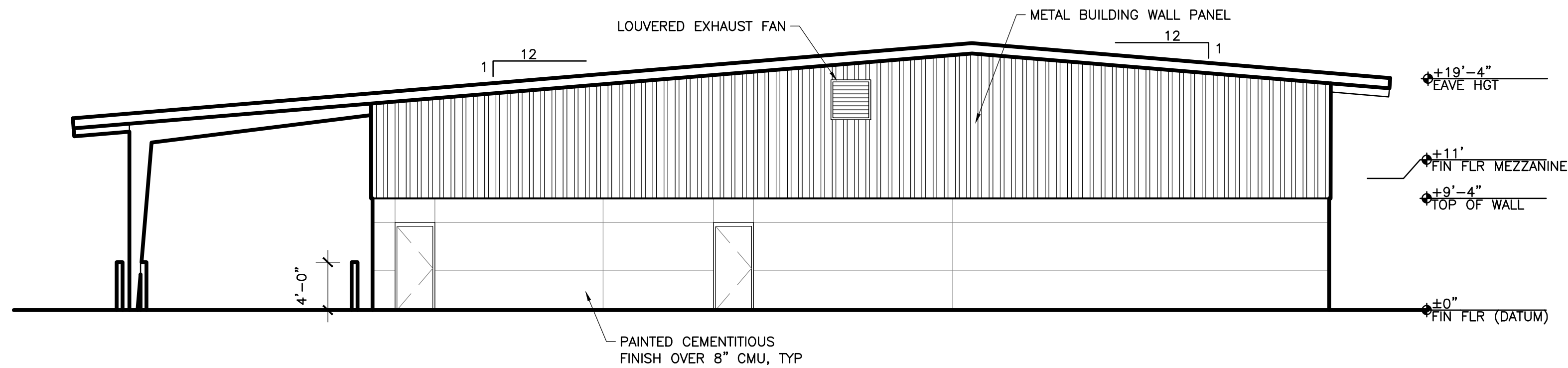
1 SOUTH ELEVATION  
A401 1/8" = 1'-0"



2 NORTH ELEVATION  
A401 1/8" = 1'-0"

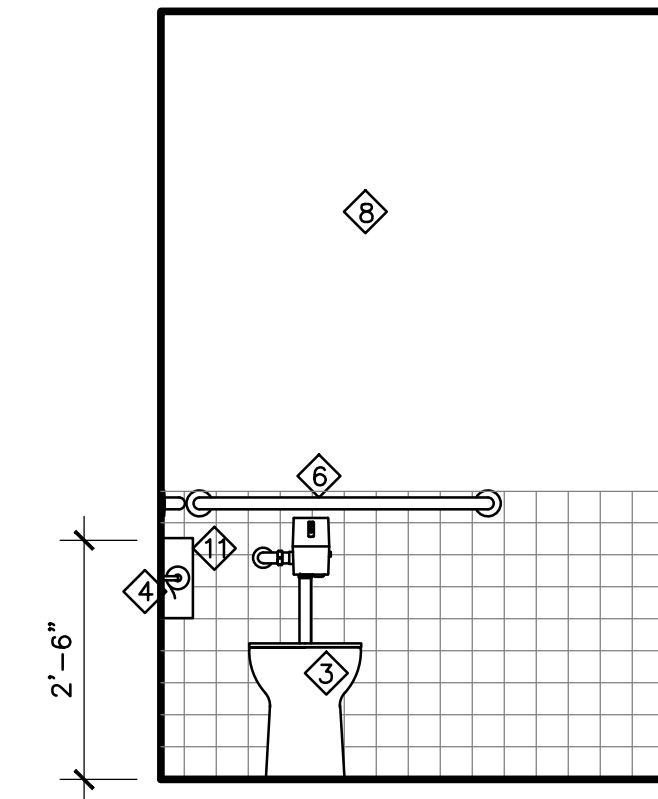


3 WEST ELEVATION  
A401 1/8" = 1'-0"

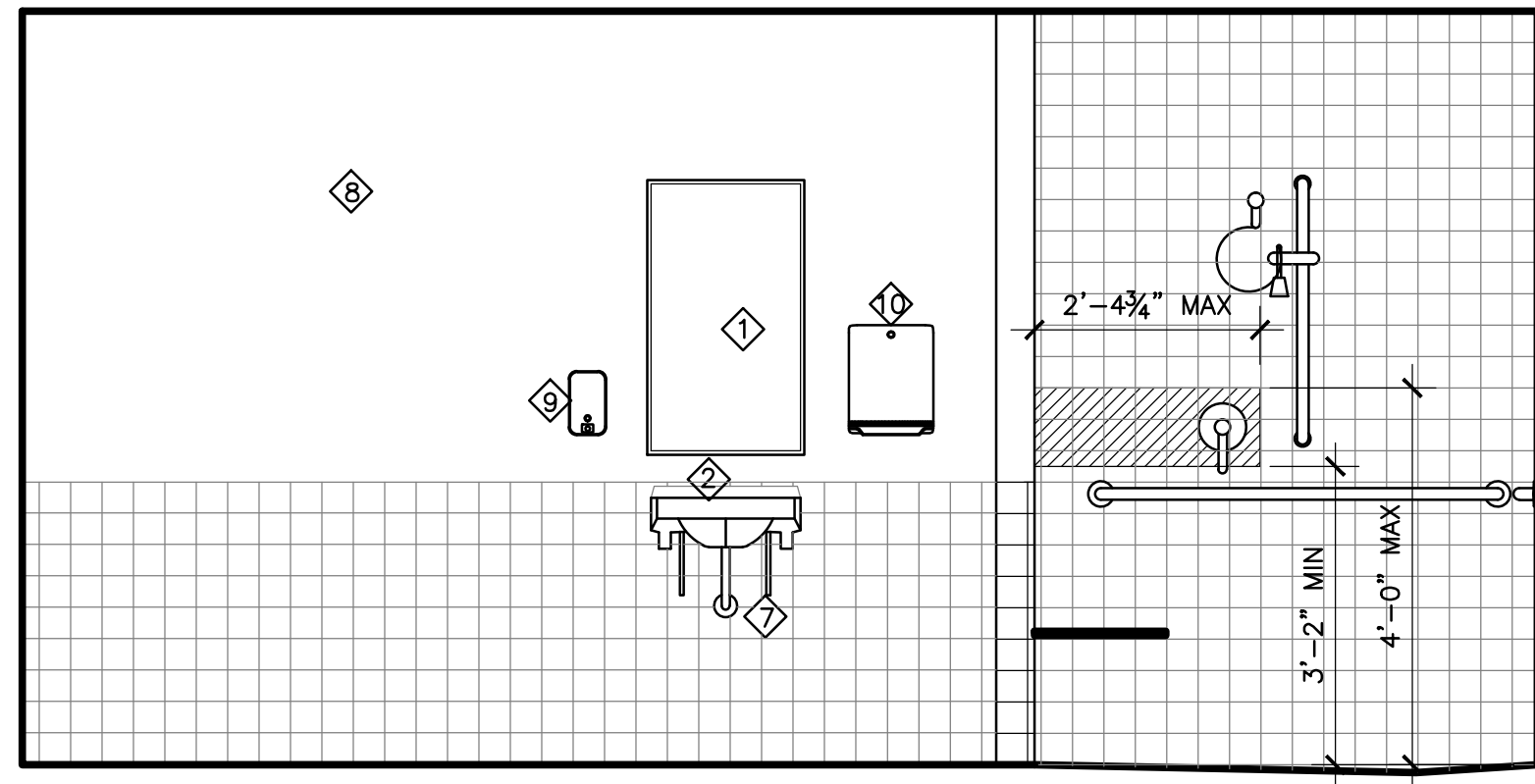


4 EAST ELEVATION  
A401 1/8" = 1'-0"

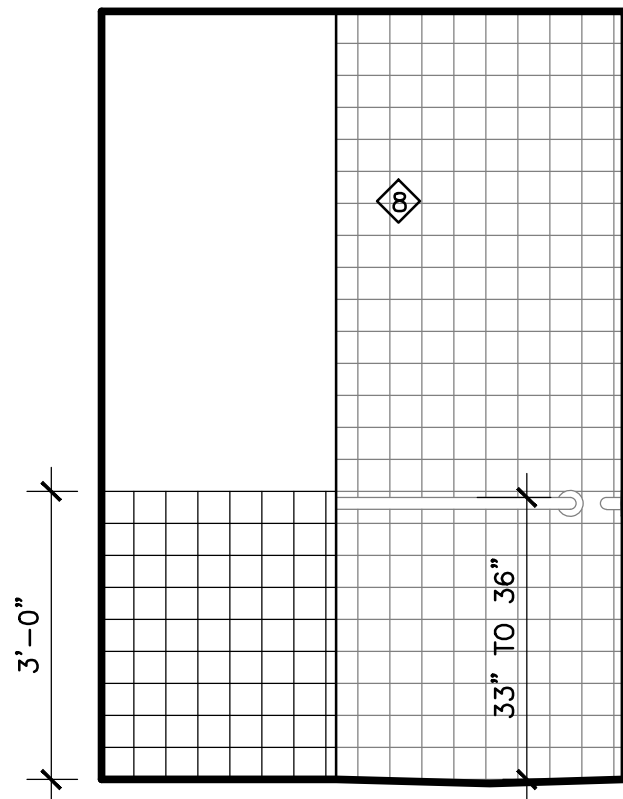




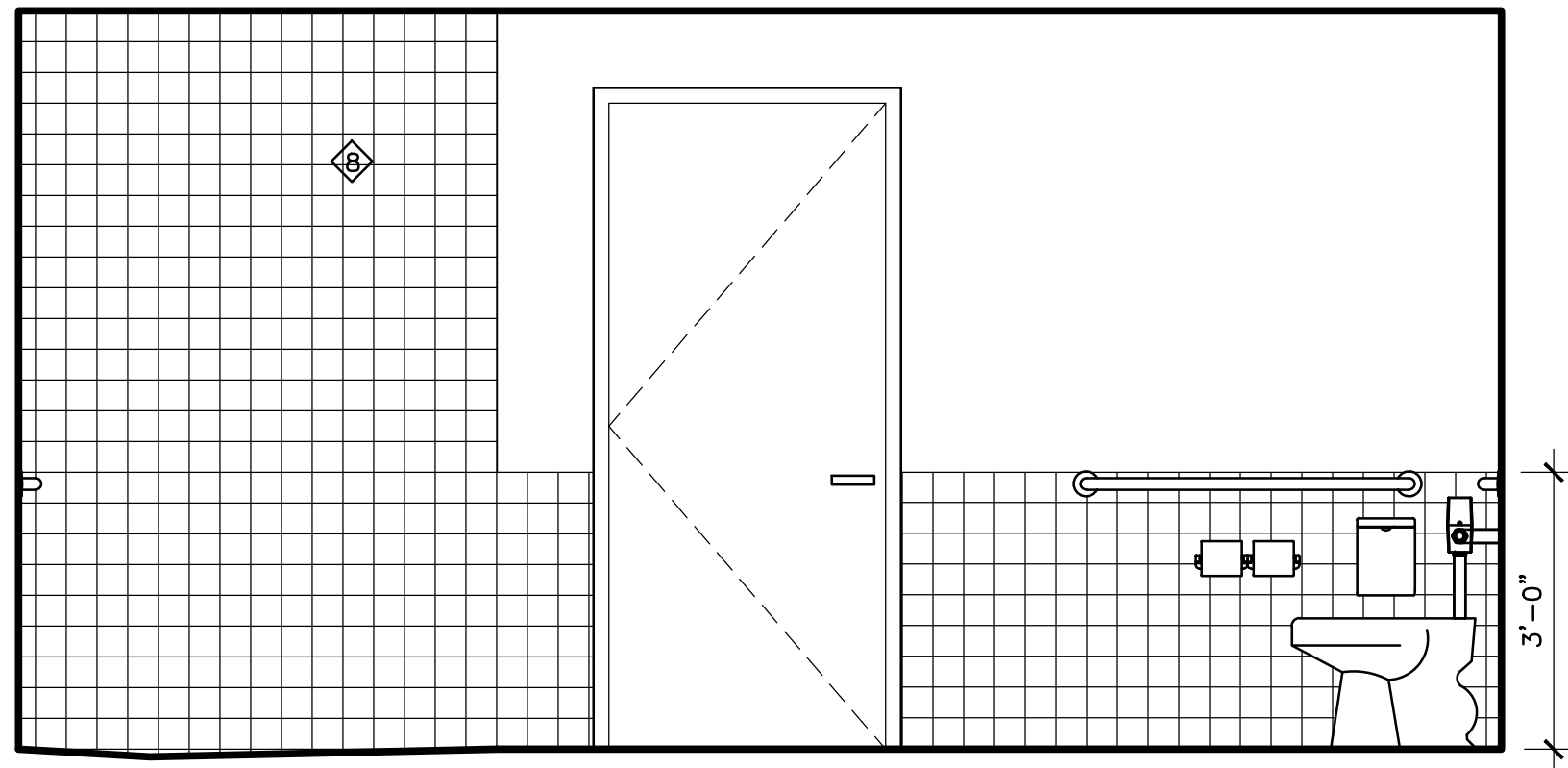
2 RESTROOM ELEVATION 1  
1/2" = 1'-0"



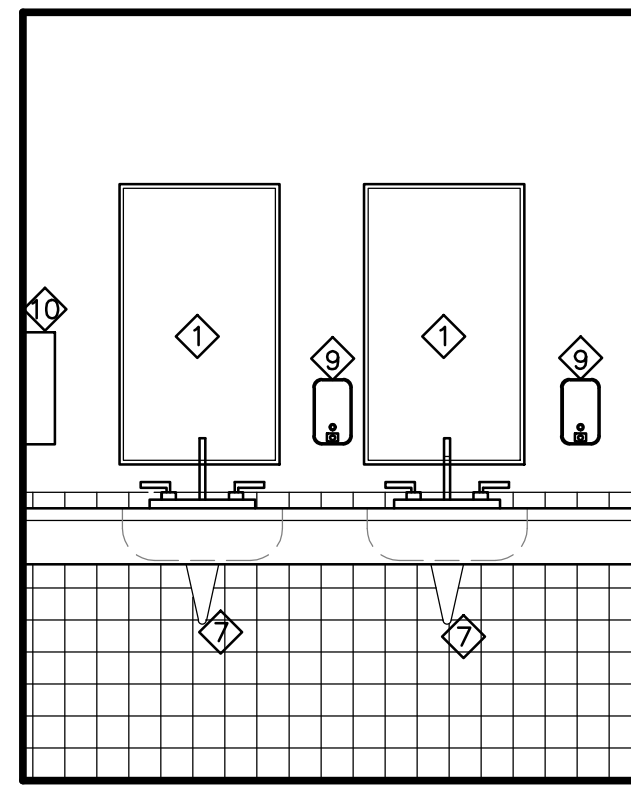
2 RESTROOM ELEVATION  
1/2" = 1'-0"



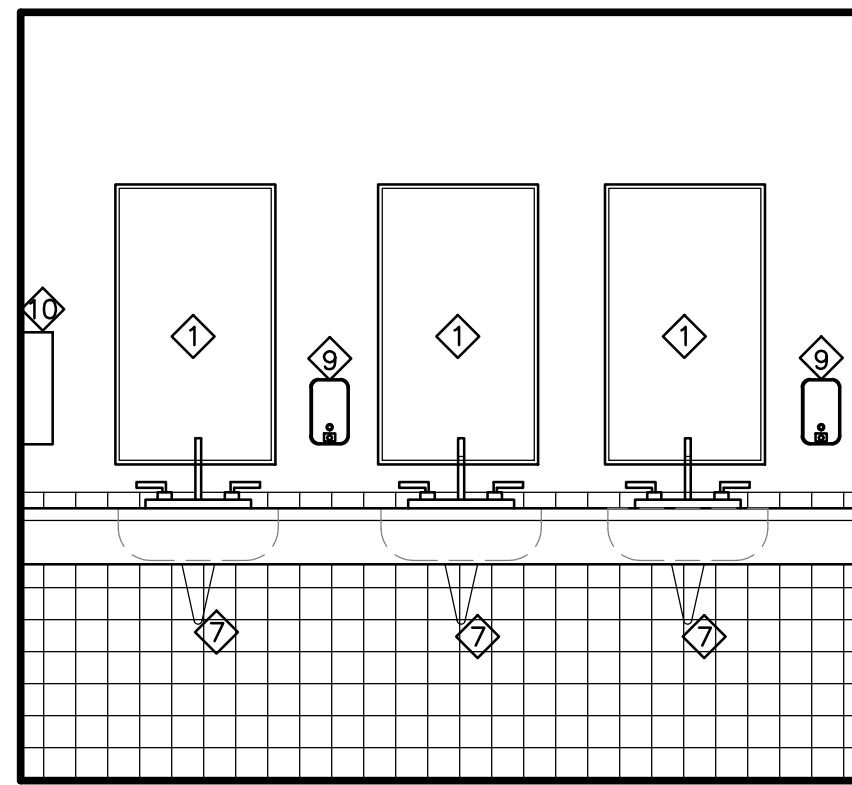
3 RESTROOM ELEVATION  
1/2" = 1'-0"



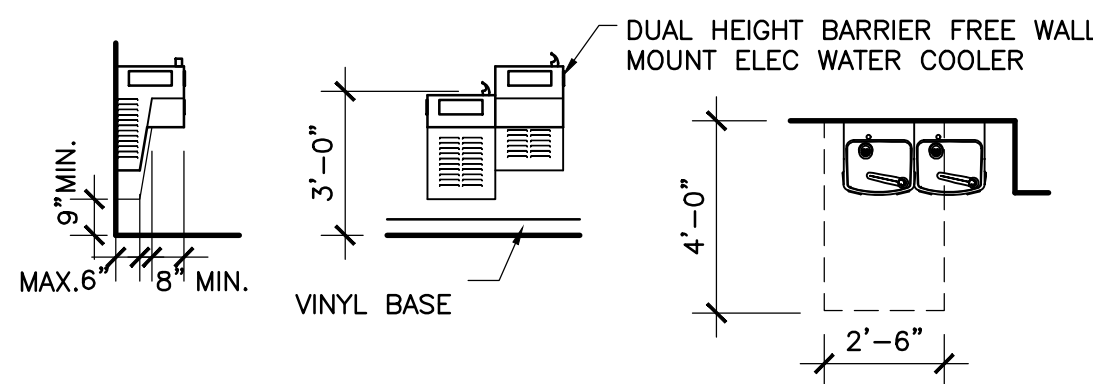
4 RESTROOM ELEVATION  
1/2" = 1'-0"



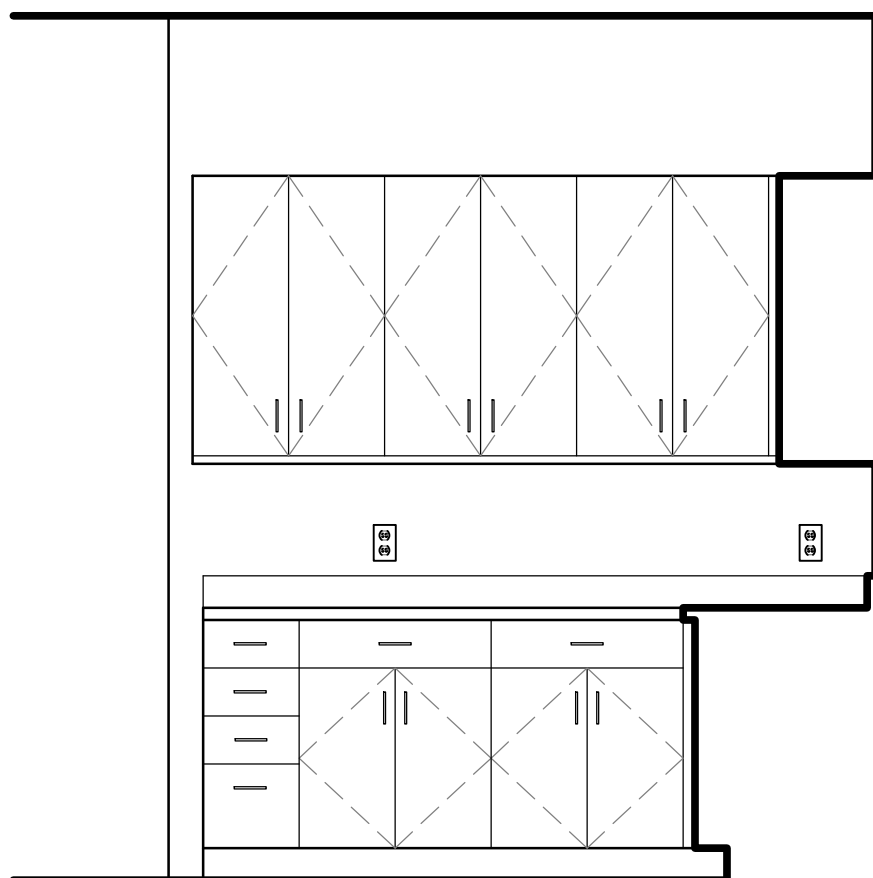
5 RESTROOM ELEVATION  
1/2" = 1'-0"



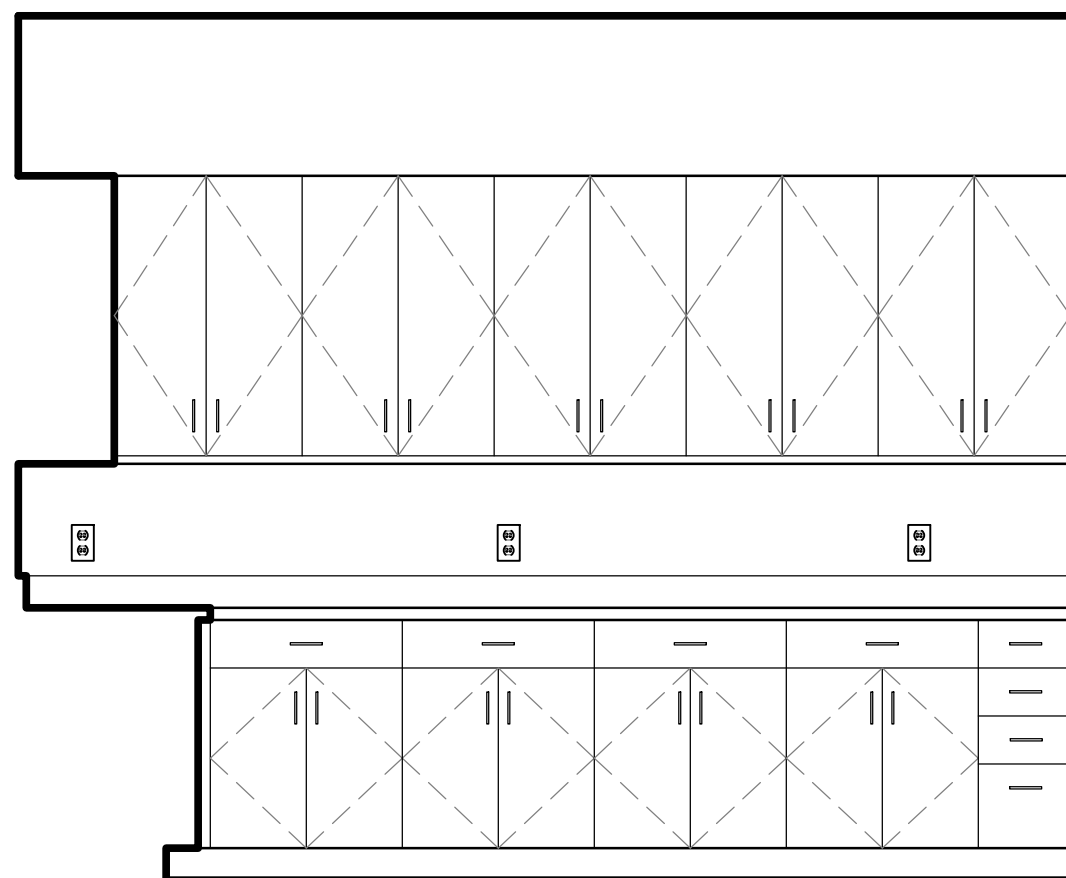
6 RESTROOM ELEVATION  
1/2" = 1'-0"



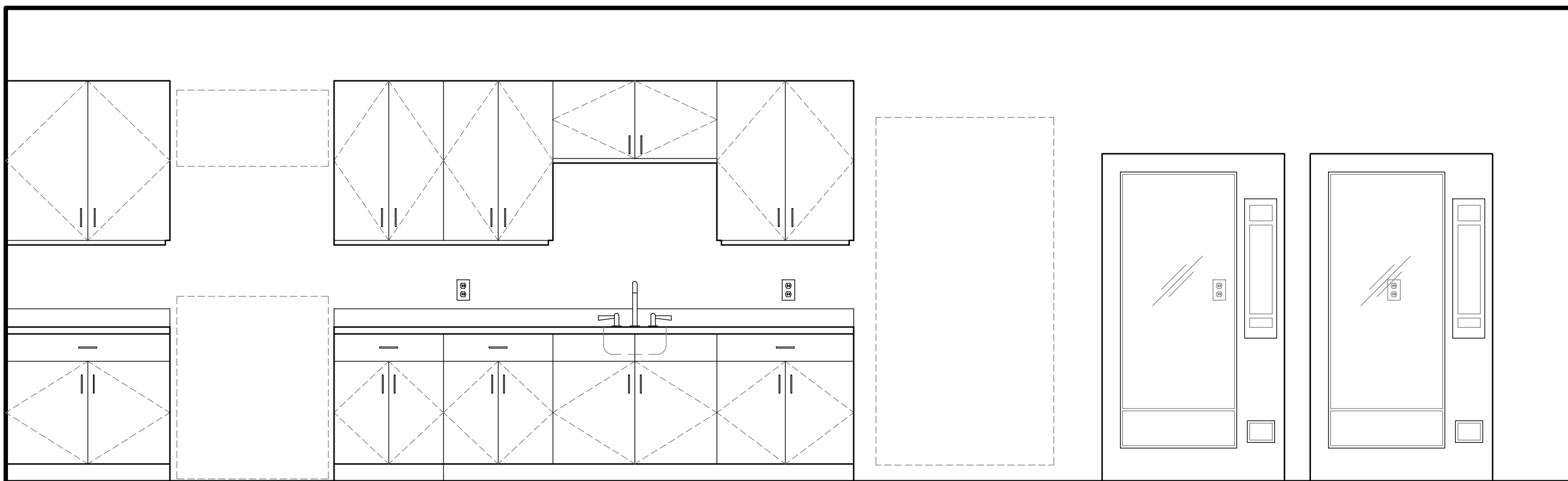
7 ELECTRIC WATER COOLER  
1/4" = 1'-0"



8 INTERIOR ELEVATION  
1/2" = 1'-0"



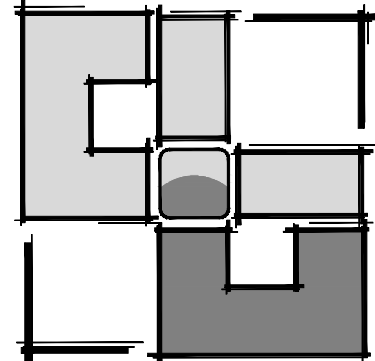
9 INTERIOR ELEVATION  
1/2" = 1'-0"



10 INTERIOR ELEVATION  
1/2" = 1'-0"

TOILET ROOM LEDGED		
TAG	ACCESSORY	MTG HGT
1	MIRROR	40" TO BOTTOM
2	H-CAP LAVATORY	---
3	H-CAP WATER CLOSET	17" TO 19" SEAT
4	TOILET TISSUE DISPENSER	15" TO 48" AFF
5	48" H-CAP GRAB BAR	33" TO 36" TO TOP
6	36" H-CAP GRAB BAR	33" TO 36" TO TOP
7	PROVIDE INSULATION AROUND ALL WATER PIPES & ABRASIVE SURFACES	
8	NON-ABSORBENT WASHABLE FINISH	
9	SOAP DISPENSER	50 1/2" TO TOP
10	PAPER TOWEL DISPENSER	54" TO TOP
11	SANITARY NAPKIN DISPOSAL, AS REQ.	30" TO TOP
12	ADA WALL HUNG URINAL	17" TO RIM
13	SHOWER CURTAIN AND ROD	---

- ACCESSORY NOTES:
- ACCESSORIES AND INSTALLATION TO COMPLY WITH FEDERAL A.D.A. REQUIREMENTS AND CURRENT EDITION OF FLORIDA ACCESSIBILITY CODE FOR BUILDING CONSTRUCTION.
  - GRAB BARS SHALL HAVE AN OUTSIDE DIAMETER OF 1 1/2" AND SHALL PROVIDE A CLEARANCE OF 1 1/2" BETWEEN THE RAIL AND THE WALL. GRAB BARS SHALL BE DESIGNED, CONSTRUCTED AND INSTALLED SO AS TO WITHSTAND A LOAD OF 250 POUNDS APPLIED AT ANY POINT, EITHER DOWNWARD OR HORIZONTALLY.
  - PROVIDE PRODUCTS OF SAME MFR. FOR EACH TYPE OF ACCESSORY UNIT UNLESS OTHERWISE DIRECTED.
  - PROVIDE SOLID BLOCKING IN WALLS FOR MOUNTING ALL ACCESSORIES. CONSULT MFRS INSTALLATION SPECS FOR EACH FIXTURE OR ACCESSORY FOR ADDITIONAL/REQUIRED BLOCKING & LOCATIONS.
  - INSTALL ACCESSORIES ACCORDING TO MFRS. WRITTEN INSTRUCTIONS.
  - COORDINATE LOCATIONS WITH OTHER WORK TO PREVENT INTERFERENCE WITH CLEARANCES REQUIRED FOR ACCESS BY DISABLED PERSONS, PROPER INSTALLATION, ADJUSTMENT, OPERATION, CLEANING, AND SERVICING.
  - MEN'S BATHROOM SIGNAGE SHALL HAVE THE MALE SYMBOL AND THE HANDICAPPED SYMBOL. WOMEN'S BATHROOM SIGNAGE SHALL HAVE THE FEMALE SYMBOL AND THE HANDICAPPED SYMBOL. LOCATE @ 60" AFF ON THE WALL ADJACENT TO THE LATCH SIDE OF THE DOOR. DO NOT MOUNT ON THE DOOR.
  - FLUSH CONTROLS FOR ALL TOILETS SHALL BE MOUNTED ON THE WIDE SIDE OF THE TOILET.
  - ALL BATHROOM FIXTURES, PARTITIONS, ACCESSORIES & FIXTURE ARRANGEMENTS & LOCATION DIMENSIONS TYPICAL FOR ALL BATHROOMS.
  - LOCATION OF ALL BATHROOM ACCESSORIES TYPICAL FOR EACH BATHROOM.
  - CONTRACTOR TO SUBMIT BATHROOM FIXTURE AND ACCESSORY SCHEDULE WITH PRODUCT CUT SHEETS TO ARCHITECT FOR APPROVAL PRIOR TO INSTALLATION.



UGARTE  
& ASSOCIATES, INC.  
ARCHITECTURE  
PLANNING

434 9th AVENUE WEST  
PALMETTO, FLORIDA 34221  
PHONE (941) 729-5691  
FAX (941) 729-5692  
WWW.UGARTEARCHITECTURE.COM  
AA-C001654

INTERIOR ELEVATIONS

SOUTHEAST WATER  
RECLAMATION FACILITY  
BUILDING

MANATEE COUNTY, FLORIDA

REVISIONS

PRELIMINARY  
NOT FOR  
CONSTRUCTION

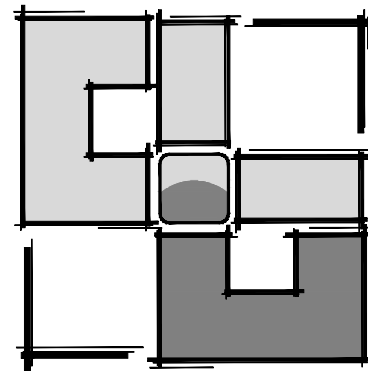
PROJECT NO: 2013-28  
DATE: 1/7/14  
DRAWN BY: .  
CHKD BY: .

CARLOS D. UGARTE  
LIC. NO. AR-0010725

SHEET

A402

1/7/2014 1:07 PM CAD DWG FILE: A402 INTERIOR ELEVATIONS.DWG



**UGARTE**  
& ASSOCIATES, INC.  
ARCHITECTURE  
PLANNING

434 9th AVENUE WEST  
PALMETTO, FLORIDA 34221  
PHONE (941) 729-5691  
FAX (941) 729-5692  
WWW.UGARTEARCHITECTURE.COM  
— AA-C001654 —

BUILDING SECTIONS

SOUTHEAST WATER  
RECLAMATION FACILITY  
BUILDING

MANATEE COUNTY, FLORIDA

REVISIONS

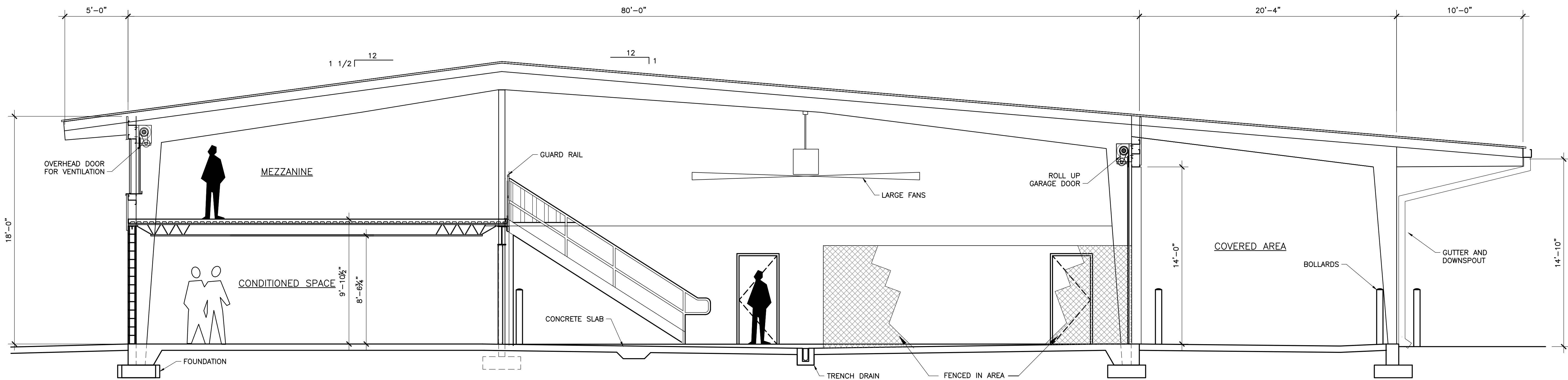
PROJECT NO: 2013-28  
DATE: 1/7/14  
DRAWN BY: -  
CHKD BY: -

**PRELIMINARY  
NOT FOR  
CONSTRUCTION**

CARLOS D. UGARTE  
LIC. NO. AR-0010725

SHEET

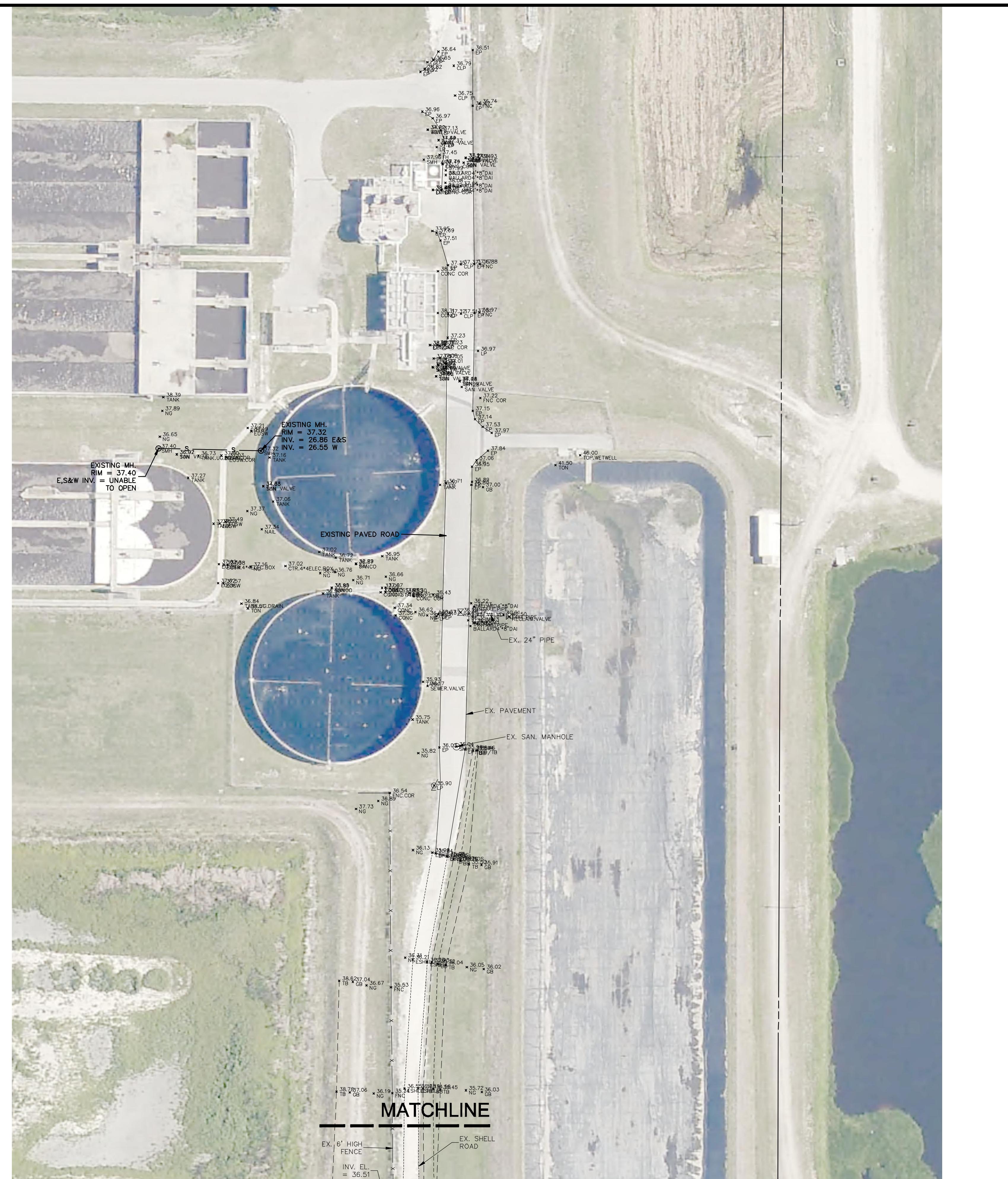
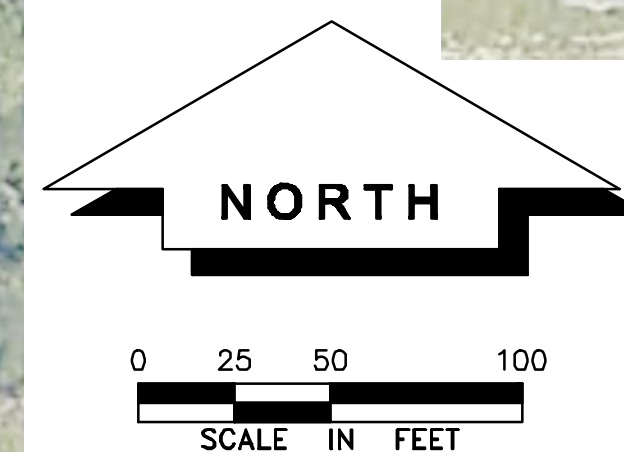
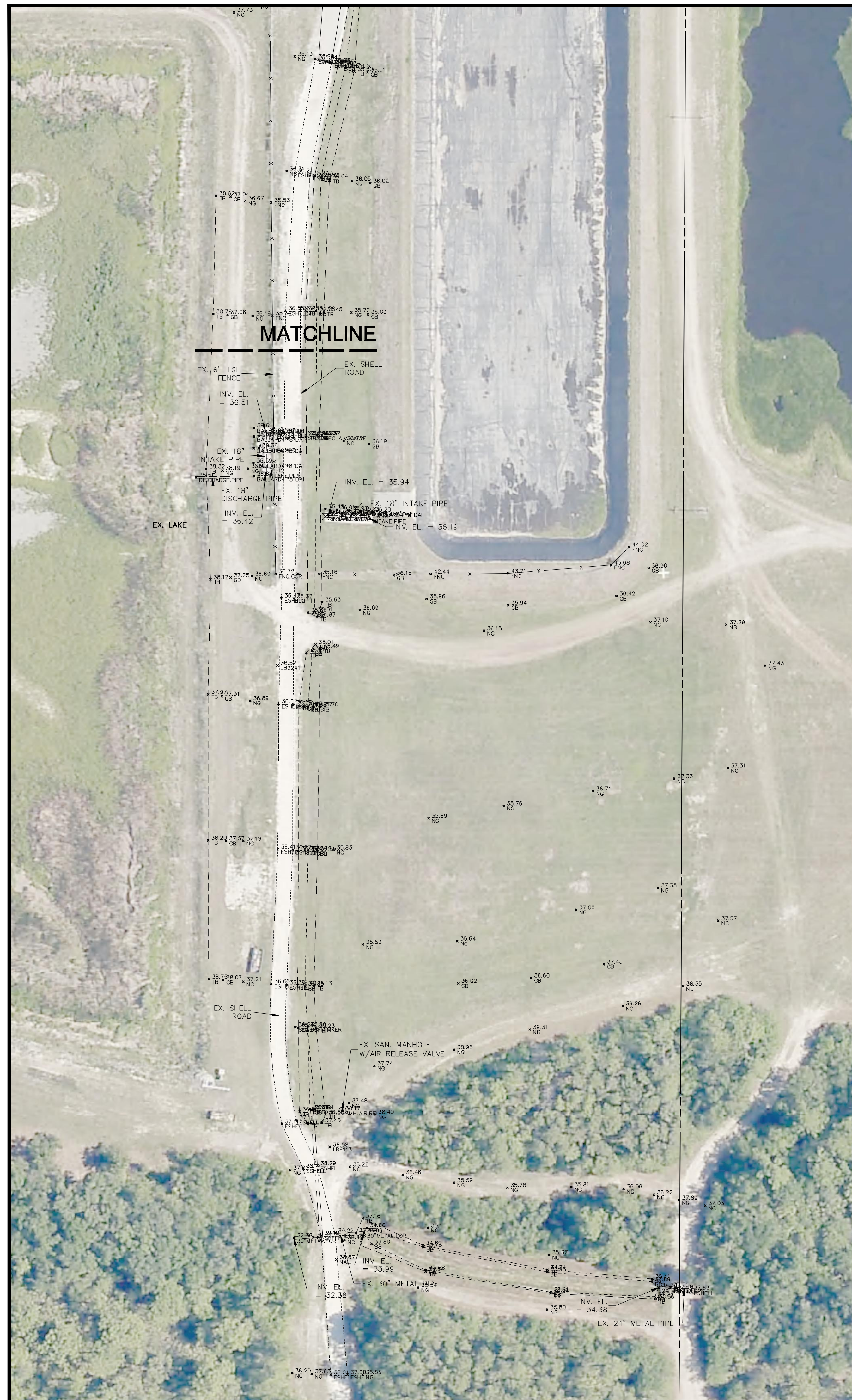
A501



1 BUILDING SECTION A  
A501 1/4" = 1'-0"

1/7/2014 11:38 AM CAD DWG FILE: A501 - BUILDING SECTIONS.DWG





<div>REVISIONS</div> <div><div></div><div></div><div></div><div></div><div></div><div></div><div></div><div></div><div></div><div></div><div></div><div></div><div></div><div></div><div></div><div></div><div></div><div></div><div></div><div></div><div></div><div></div><div></div><div></div><div></div><div></div><div></div><div></div><div></div><div></div><div></div><div></div><div></div><div></div><div></div><div></div><div></div><div></div><div></div><div></div><div></div><div></div><div></div><div></div><div></div><div></div><div></div><div></div><div></div><div></div><div></div><div></div><div></div><div></div><div></div><div></div><div></div><div></div><div></div><div></div><div></div><div></div><div></div><div></div><div></div><div></div><div></div><div></div><div></div><div></div><div></div><div></div><div></div><div></div><div></div><div></div><div></div><div></div><div></div><div></div><div></div><div></div><div></div><div></div><div></div><div></div><div></div><div></div><div></div><div></div><div></div><div></div><div></div><div></div><div></div><div></div><div></div><div></div><div></div><div></div><div></div><div></div><div></div><div></div><div></div><div></div><div></div><div></div><div></div><div></div><div></div><div></div><div></div><div></div><div></div><div></div><div></div><div></div><div></div><div></div><div></div><div></div><div></div><div></div><div></div><div></div><div></div><div></div><div></div><div></div><div></div><div></div><div></div><div></div><div></div><div></div><div></div><div></div><div></div><div></div><div></div><div></div><div></div><div></div><div></div><div></div><div></div><div></div><div></div><div></div><div></div><div></div><div></div><div></div><div></div><div></div><div></div><div></div><div></div><div></div><div></div><div></div><div></div><div></div><div></div><div></div><div></div><div></div><div></div><div></div><div></div><div></div><div></div><div></div><div></div><div></div><div></div><div></div><div></div><div></div><div></div><div></div><div></div><div></div><div></div><div></div><div></div><div></div><div></div><div></div><div></div><div></div><div></div><div></div><div></div><div></div><div></div><div></div><div></div><div></div><div></div><div></div><div></div><div></div><div></div><div></div><div></div><div></div><div></div><div></div><div></div><div></div><div></div><div></div><div></div><div></div><div></div><div></div><div></div><div></div><div></div><div></div><div></div><div></div><div></div><div></div><div></div><div></div><div></div><div></div><div></div><div></div><div></div><div></div><div></div><div></div><div></div><div></div><div></div><div></div><div></div><div></div><div></div><div></div><div></div><div></div><div></div><div></div><div></div><div></div><div></div><div></div><div></div><div></div><div></div><div></div><div></div><div></div><div></div><div></div><div></div><div></div><div></div><div></div><div></div><div></div><div></div><div></div><div></div><div></div><div></div><div></div><div></div><div></div><div></div><div></div><div></div><div></div><div></div><div></div><div></div><div></div><div></div><div></div><div></div><div></div><div></div><div></div><div></div><div></div><div></div><div></div><div></div><div></div><div></div><div></div><div></div><div></div><div></div><div></div><div></div><div></div><div></div><div></div><div></div><div></div><div></div><div></div><div></div><div></div><div></div><div></div><div></div><div></div><div></div><div></div><div></div><div></div><div></div><div></div><div></div><div></div><div></div><div></div><div></div><div></div><div></div><div></div><div></div><div></div><div></div><div></div><div></div><div></div><div></div><div></div><div></div><div></div><div></div><div></div><div></div><div></div><div></div><div></div><div></div><div></div><div></div><div></div><div></div><div></div><div></div><div></div><div></div><div></div><div></div><div></div><div></div><div></div><div></div><div></div><div></div><div></div><div></div><div></div><div></div><div></div><div></div><div></div><div></div><div></div><div></div><div></div><div></div><div></div><div></div><div></div><div></div><div></div><div></div><div></div><div></div><div></div><div></div><div></div><div></div><div></div><div></div><div></div><div></div><div></div><div></div><div></div><div></div><div></div><div></div><div></div><div></div><div></div><div></div><div></div><div></div><div></div><div></div><div></div><div></div><div></div><div></div><div></div><div></div><div></div><div></div><div></div><div></div><div></div><div></div><div></div><div></div><div></div><div></div><div></div><div></div><div></div><div></div><div></div><div></div><div></div><div></div><div></div><div></div><div></div><div></div><div></div><div></div><div></div><div></div><div></div><div></div><div></div><div></div><div></div><div></div><div></div><div></div><div></div><div></div><div></div><div></div><div></div><div></div><div></div><div></div><div></div><div></div><div></div><div></div><div></div><div></div><div></div><div></div><div></div><div></div><div></div><div></div><div></div><div></div><div></div><div></div><div></div><div></div><div></div><div></div><div></div><div></div><div></div><div></div><div></div><div></div><div></div><div></div><div></div><div></div><div></div><div></div><div></div><div></div><div></div><div></div><div></div><div></div><div></div><div></div><div></div><div></div><div></div><div></div><div></div><div></div><div></div><div></div><div></div><div></div><div></div><div></div><div></div><div></div><div></div><div></div><div></div><div></div><div></div><div></div><div></div><div></div><div></div><div></div><div></div><div></div><div></div><div></div><div></div><div></div><div></div><div></div><div></div><div></div><div></div><div></div><div></div><div></div><div></div><div></div><div></div><div></div><div></div><div></div><div></div><div></div><div></div><div></div><div></div><div></div><div></div><div></div><div></div><div></div><div></div><div></div><div></div><div></div><div></div><div></div><div></div><div></div><div></div><div></div><div></div><div></div><div></div><div></div><div></div><div></div><div></div><div></div><div></div><div></div><div></div><div></div><div></div><div></div><div></div><div></div><div></div><div></div><div></div><div></div><div></div><div></div><div></div><div></div><div></div><div></div><div></div><div></div><div></div><div></div><div></div><div></div><div></div><div></div><div></div><div></div><div></div><div></div><div></div><div></div><div></div><div></div><div></div><div></div><div></div><div></div><div></div><div></div><div></div><div></div><div></div><div></div><div></div><div></div><div></div><div></div><div></div><div></div><div></div><div></div><div></div><div></div><div></div><div></div><div></div><div></div><div></div><div></div><div></div><div></div><div></div><div></div><div></div><div></div><div></div><div></div><div></div><div></div><div></div><div></div><div></div><div></div><div></div><div></div><div></div><div></div><div></div><div></div><div></div><div></div><div></div><div></div><div></div><div></div><div></div><div></div><div></div><div></div><div></div><div></div><div></div><div></div><div></div><div></div><div></div><div></div><div></div><div></div><div></div><div></div><div></div><div></div><div></div><div></div><div></div><div></div><div></div><div></div><div></div><div></div><div></div><div></div><div></div><div></div><div></div><div></div><div></div><div></div><div></div><div></div><div></div><div></div><div></div><div></div><div></div><div></div><div></div><div></div><div></div><div></div><div></div><div></div><div></div><div></div><div></div><div></div><div></div><div></div><div></div><div></div><div></div><div></div><div></div><div></div><div></div><div></div><div></div><div></div><div></div><div></div><div></div><div></div><div></div><div></div><div></div><div></div><div></div><div></div><div></div><div></div><div></div><div></div><div></div><div></div><div></div><div></div><div></div><div></div><div></div><div></div><div></div><div></div><div></div><div></div><div></div><div></div><div></div><div></div><div></div><div></div><div></div><div></div><div></div><div></div><div></div><div></div><div></div><div></div><div></div><div></div><div></div><div></div><div></div><div></div><div></div><div></div><div></div><div></div><div></div><div></div><div></div><div></div><div></div><div></div><div></div><div></div><div></div><div></div><div></div><div></div><div></div><div></div><div></div><div></div><div></div><div></div><div></div><div></div><div></div><div></div><div></div><div></div><div></div><div></div><div></div><div></div><div></div><div></div><div></div><div></div><div></div><div></div><div></div><div></div><div></div><div></div><div></div><div></div><div></div><div></div><div></div><div></div><div></div><div></div><div></div><div></div><div></div><div></div><div></div><div></div><div></div><div></div><div></div><div></div><div></div><div></div><div></div><div></div><div></div><div></div><div></div><div></div><div></div><div></div><div></div><div></div><div></div><div></div><div></div><div></div><div></div><div></div><div></div><div></div><div></div><div></div><div></div><div></div><div></div><div></div><div></div><div></div><div></div><div></div><div></div><div></div><div></div><div></div><div></div><div></div><div></div><div></div><div></div><div></div><div></div><div></div><div></div><div></div><div></div><div></div><div></div><div></div><div></div><div></div><div></div><div></div><div></div><div></div><div></div><div></div><div></div><div></div><div></div><div></div><div></div><div></div><div></div><div></div><div></div><div></div><div></div><div></div><div></div><div></div><div></div><div></div><div></div><div></div><div></div><div></div><div></div><div></div><div></div><div></div><div></div><div></div><div></div><div></div><div></div><div></div><div></div><div></div><div></div><div></div><div></div><div></div><div></div><div></div><div></div><div></div><div></div><div></div><div></div><div></div><div></div><div></div><div></div><div></div><div></div><div></div><div></div><div></div><div></div><div></div><div></div><div></div><div></div><div></div><div></div><div></div><div></div><div></div><div></div><div></div><div></div><div></div><div></div><div></div><div></div><div></div><div></div><div></div><div></div><div></div><div></div><div></div><div></div><div></div><div></div><div></div><div></div><div></div><div></div><div></div><div></div><div></div><div></div><div></div><div></div><div></div><div></div><div></div><div></div><div></div><div></div><div></div><div></div><div></div><div></div><div></div><div></div><div></div><div></div><div></div><div></div><div></div><div></div><div></div><div></div><div></div><div></div><div></div><div></div><div></div><div></div><div></div><div></div><div></div><div></div><div></div><div></div><div></div><div></div><div></div><div></div><div></div><div></div><div></div><div></div><div></div><div></div><div></div><div></div><div></div><div></div><div></div><div></div><div></div><div></div><div></div><div></div><div></div><div></div><div></div><div></div><div></div><div></div><div></div><div></div><div></div><div></div><div></div><div></div><div></div><div></div><div></div><div></div><div></div><div></div><div></div><div></div><div></div><div></div><div></div><div></div><div></div><div></div><div></div><div></div><div></div><div></div><div></div><div></div><div></div><div></div><div></div><div></div><div></div><div></div><div></div><div></div><div></div><div></div><div></div><div></div><div></div><div></div><div></div><div></div><div></div><div></div><div></div><div></div><div></div><div></div><div></div><div></div><div></div><div></div><div></div><div></div><div></div><div></div><div></div><div></div><div></div><div></div><div></div><div></div><div></div><div></div><div></div><div></div><div></div><div></div><div></div><div></div><div></div><div></div><div></div><div></div><div></div><div></div><div></div><div></div><div></div><div></div><div></div><div></div></div>
--