

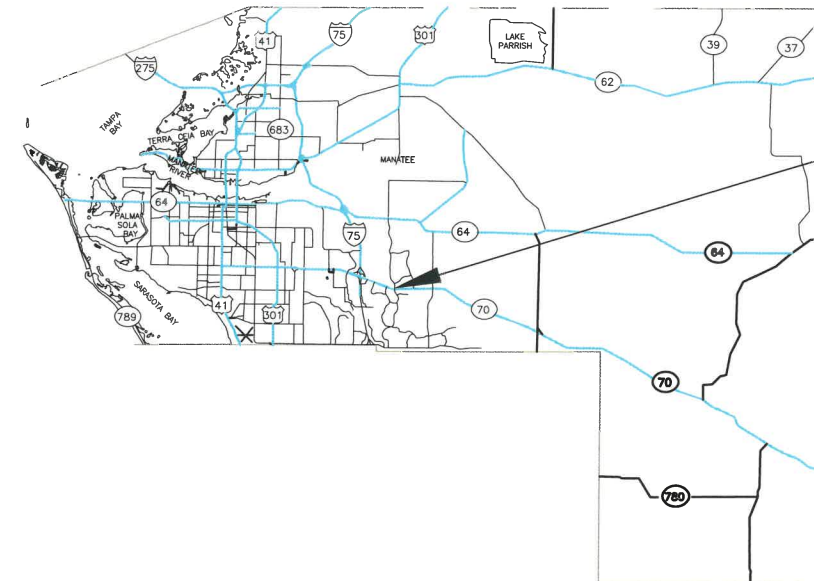
# EXHIBIT 3



## MANATEE COUNTY, FLORIDA SIGNING & PAVEMENT MARKINGS

### LAKWOOD RANCH BOULEVARD QUANTITIES

ITEM NO.	DESCRIPTION	EST. QTY	U/M
SIGNING AND PAVEMENT MARKING			
0700 1 11	SINGLE POST SIGN, F&I GM, <12 SF	6	AS
0700 1 60	SINGLE POST SIGN, REMOVE	9	AS
0711 11124	THERMOPLASTIC, STD, WHITE, SOLID, 18" FOR DIAGONALS AND CHEVRONS	410	LF
0711 11125	THERMOPLASTIC, STD, WHITE, SOLID, 24"	152	LF
0711 11141	THERMOPLASTIC, STD, WHITE, DOT GUIDE, 6"	0.345	GM
0711 11160	THERMOPLASTIC, STD, WHITE, MESSAGE	15	EA
0711 11170	THERMOPLASTIC, STD, WHITE, ARROW	45	EA
0711 11224	THERMOPLASTIC, STD, YELLOW, SOLID, 18" FOR DIAGONAL OR CHEVRON	12	LF
0711 11241	THERMOPLASTIC, STD, YELLOW, DOT / GUIDE, 6"	0.025	GM
0711 14660	THERMOPLASTIC, PREFORMED, MULTI, ROUTE S	4	EA
0711 15101	THERMOPLASTIC, STD-OP, WHITE, SOLID, 6"	2.15	GM
0711 15131	THERMOPLASTIC, STD-OP, WHITE, SKIP, 6"	0.434	GM
0711 15201	THERMOPLASTIC, STD-OP, YELLOW, SOLID, 6"	0.649	GM
0711 15 SP	GREEN BIKE LANE TREATMENT	360	LF
0711 15 SP	GREEN BIKE LANE, DOT GUIDE	440	LF



PROJECT LOCATION

#### GENERAL NOTES:

1. ALL OF THE SIGNING AND PAVEMENT MARKINGS SHALL BE PROVIDED IN ACCORDANCE WITH THE LATEST EDITIONS OF THE MUTCD, FDOT DESIGN STANDARDS AND THE MANATEE COUNTY PUBLIC WORKS DEPARTMENT HIGHWAY, TRAFFIC AND STORMWATER STANDARDS.
2. TYPICAL PLACEMENT OF RAISED PAVEMENT MARKERS PER FDOT INDEX 706-001.
3. SIGN LOCATIONS SHOWN ARE APPROXIMATE AND MAY REQUIRE FIELD ADJUSTMENT.



Know what's below  
Call before you dig

#### PROJECT DESCRIPTION

PROJECT CONSISTS OF PROVIDING A BUFFERED BIKE LANE FOR SOUTHBOUND DIRECTION ON LAKEWOOD RANCH BOULEVARD FROM NORTH OF RANGELAND PARKWAY TO SUMMERFIELD PARK.

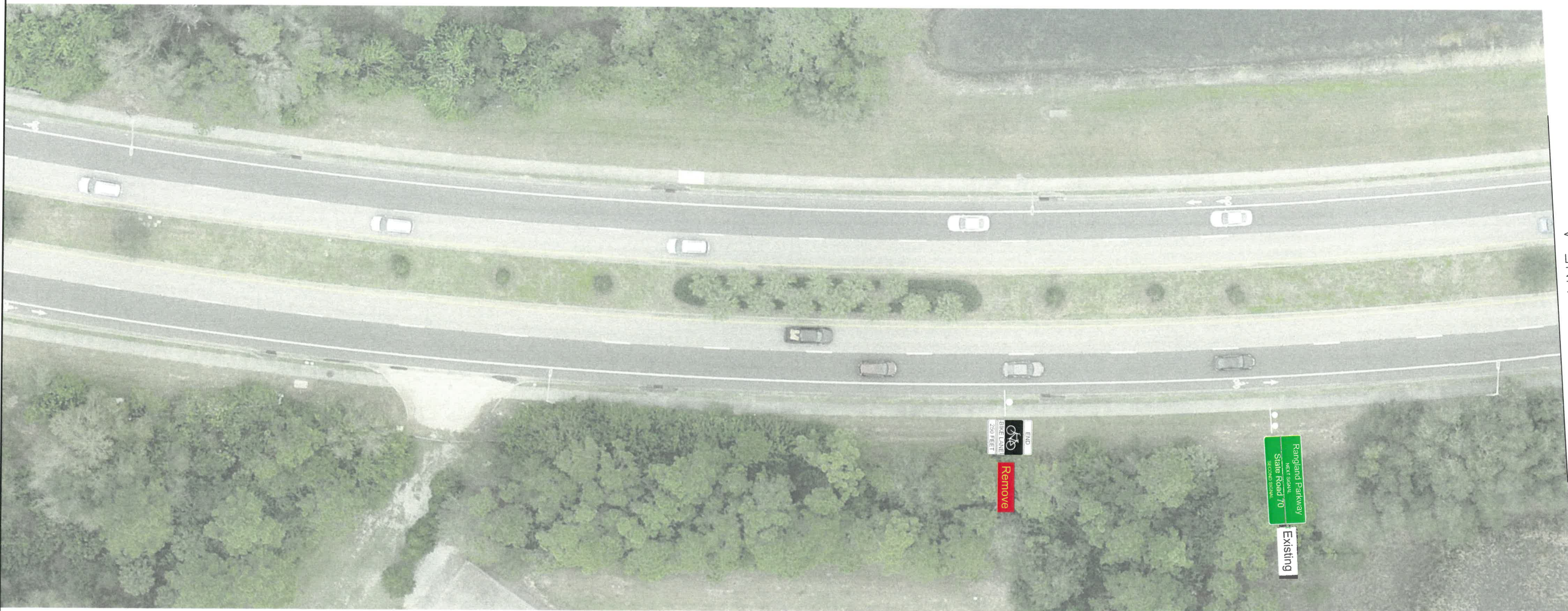
NO.	INDEX OF SHEETS
COVER SHEET 1 thru 8	COVER SHEET, GENERAL NOTES AND QUANTITIES SIGNING & PAVEMENT MARKING PLANS



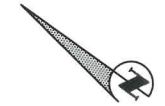
Public Works Department  
Traffic Engineering Division  
2101 47th Terrace East  
Bradenton, FL 34203  
(941) 749-3500 - phone (941) 749-3571 - fax

### Lakewood Ranch Boulevard: North of Rangeland Parkway to Summerfield Park

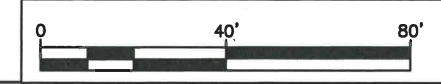
COVER	
Designed by: N. Byrne	Dwg. No:
Drawn by: N. Byrne	Date: 6/18/21
Checked by: V. Kakkad	Scale: NTS



MATCH LINE A



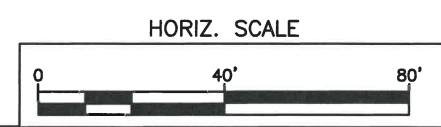
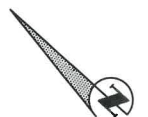
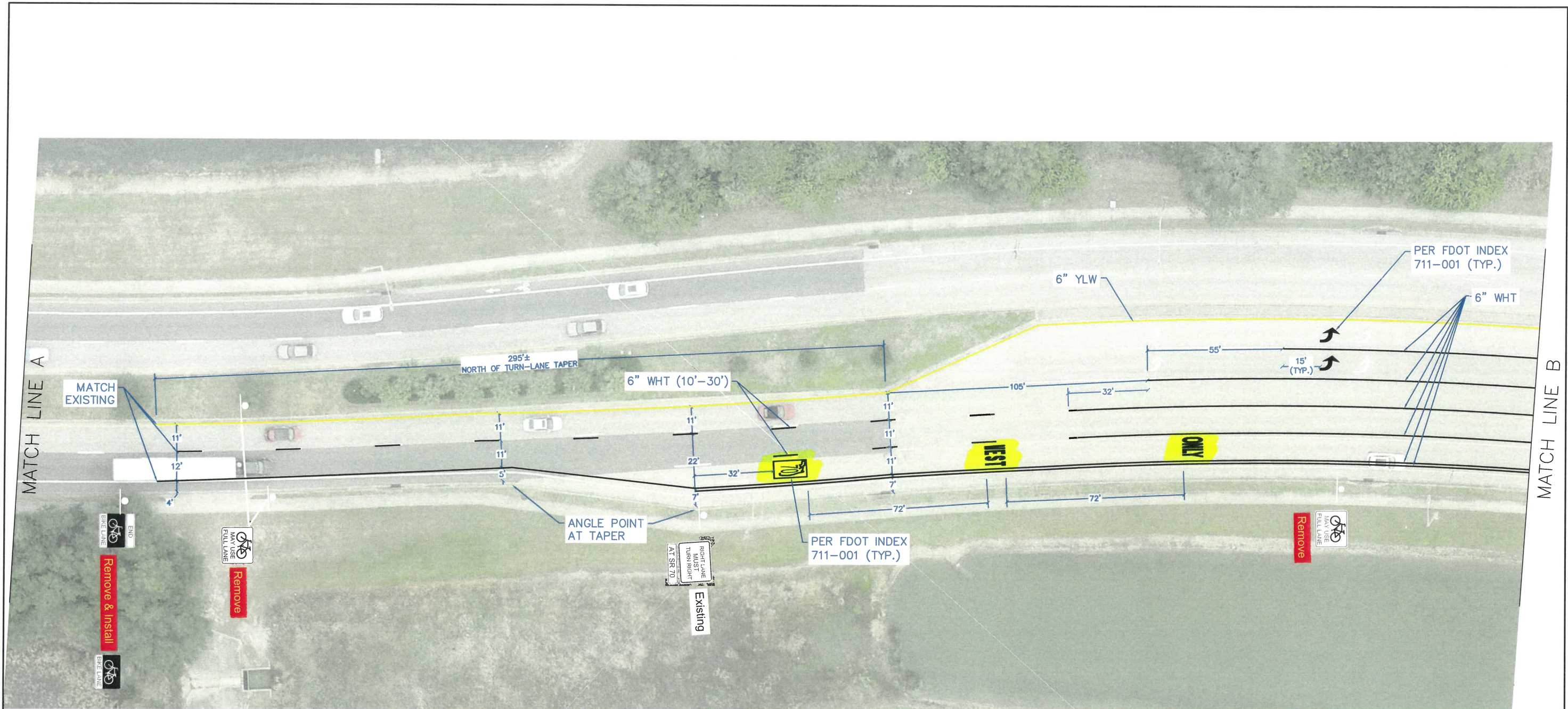
HORIZ. SCALE



**Public Works Department**  
 Traffic Engineering Division  
 2101 47th Terrace East  
 Bradenton, FL, 34203  
 (941) 749-3500 - phone (941) 749-3571 - fax

## Lakewood Ranch Boulevard: North of Rangeland Parkway to Summerfield Park

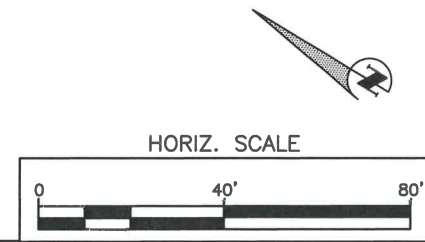
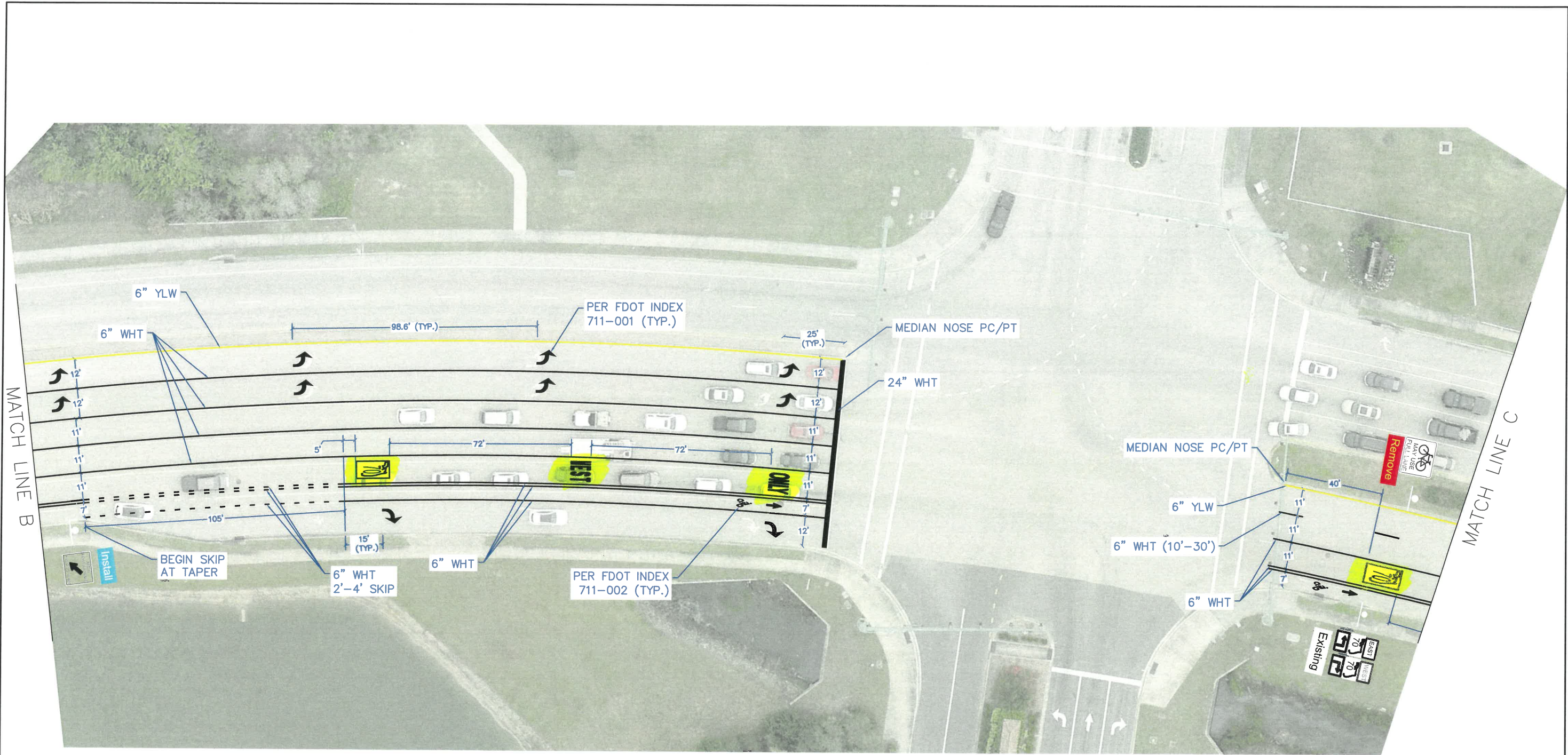
Sheet 1	
Designed by: N. Byrne	Dwg. No:
Drawn by: N. Byrne	Date: 6/18/21
Checked by: V. Kakkad	Scale: 40:1



**Public Works Department**  
 Traffic Engineering Division  
 2101 47th Terrace East  
 Bradenton, FL 34203  
 (941) 749-3500 - phone (941) 749-3571 - fax

## Lakewood Ranch Boulevard: North of Rangeland Parkway to Summerfield Park

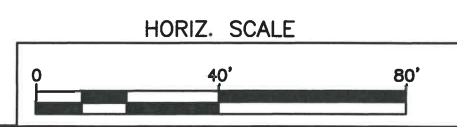
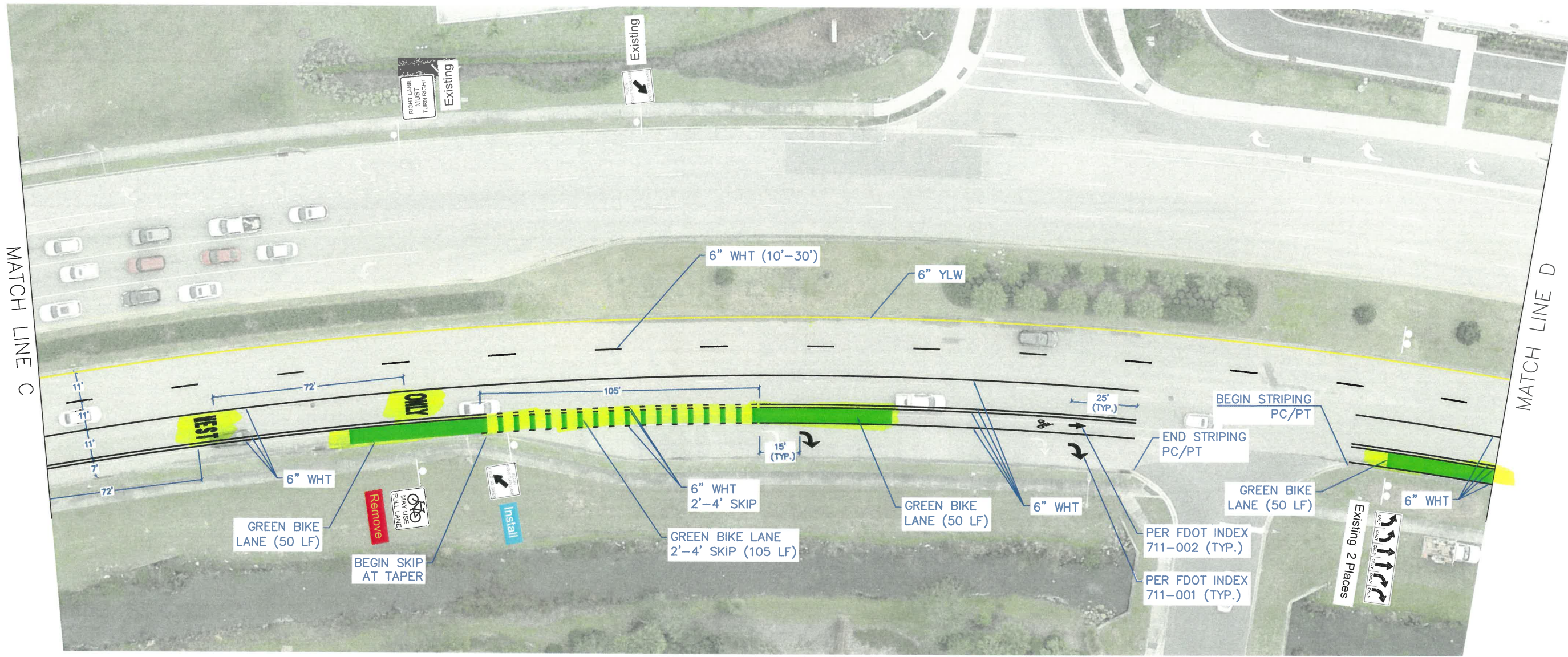
Sheet 2	
Designed by: N. Byrne	Dwg. No:
Drawn by: N. Byrne	Date: 6/18/21
Checked by: V. Kakkad	Scale: NTS



Public Works Department  
 Traffic Engineering Division  
 2101 47th Terrace East  
 Bradenton, FL 34203  
 (941) 749-3500 - phone (941) 749-3571 - fax

## Lakewood Ranch Boulevard: North of Rangeland Parkway to Summerfield Park

Sheet 3	
Designed by: N. Byrne	Dwg. No:
Drawn by: N. Byrne	Date: 6/18/21
Checked by: V. Kakkad	Scale: NTS

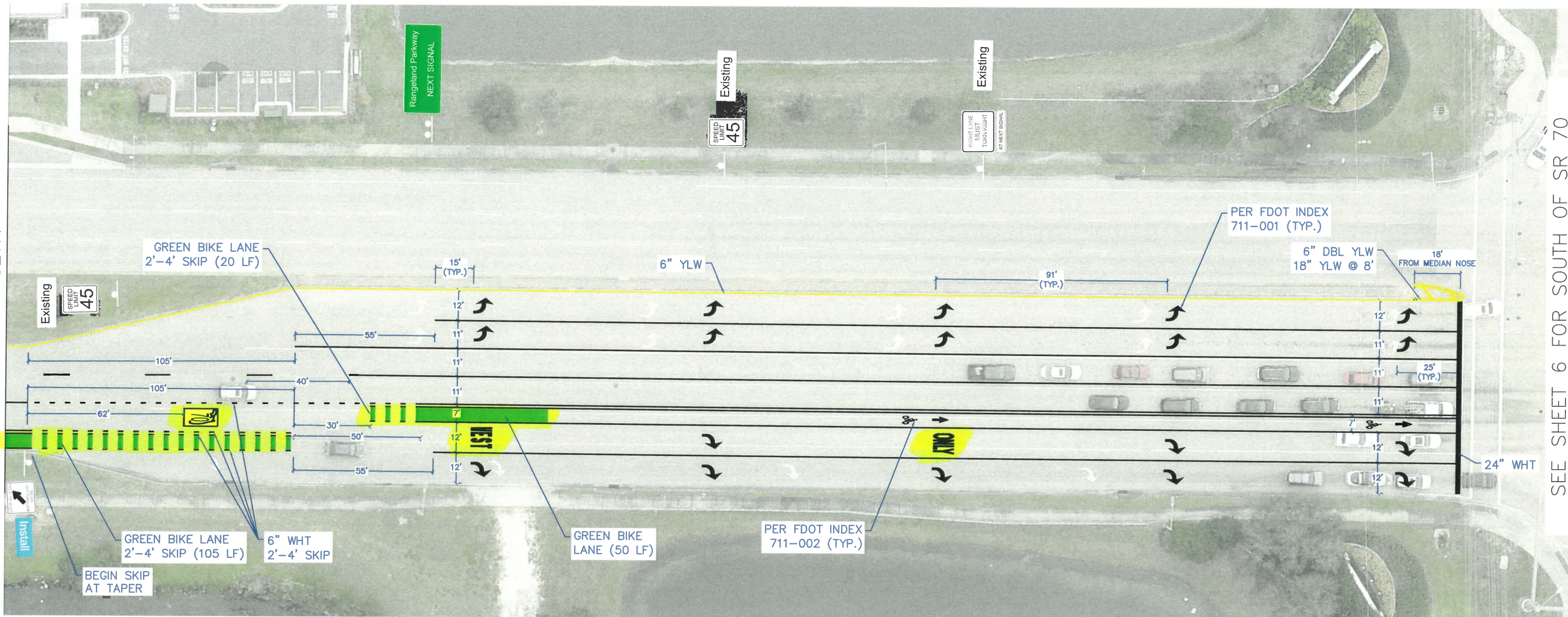


**Public Works Department**  
 Traffic Engineering Division  
 2101 47th Terrace East  
 Bradenton, FL 34203  
 (941) 749-3500 - phone (941) 749-3571 - fax

## Lakewood Ranch Boulevard: North of Rangeland Parkway to Summerfield Park

Sheet 4	
Designed by: N. Byrne	Dwg. No:
Drawn by: N. Byrne	Date: 6/18/21
Checked by: V. Kakkad	Scale: NTS

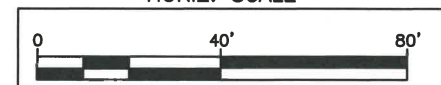
MATCH LINE D



SEE SHEET 6 FOR SOUTH OF SR 70



HORIZ. SCALE

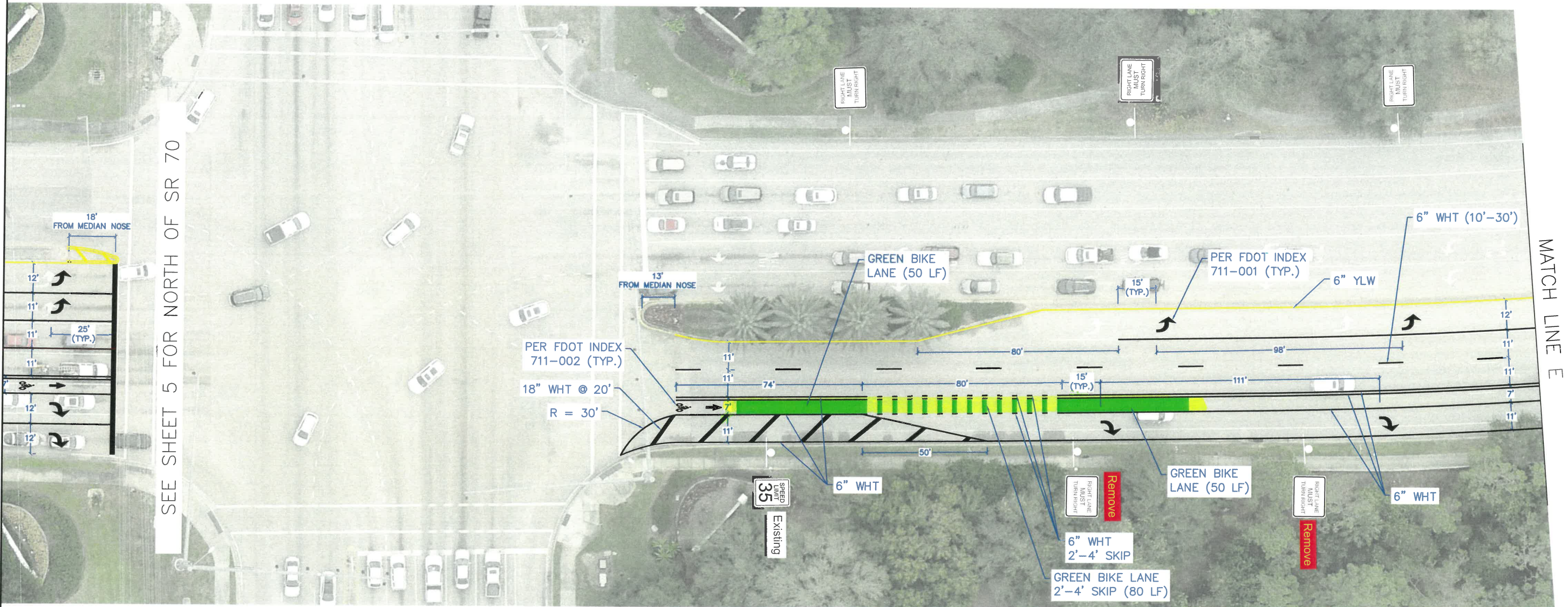


**Public Works Department**  
 Traffic Engineering Division  
 2101 47th Terrace East  
 Bradenton, FL, 34203  
 (941) 749-3500 - phone (941) 749-3571 - fax

## Lakewood Ranch Boulevard: North of Rangeland Parkway to Summerfield Park

Sheet 5

Designed by: N. Byrne	Dwg. No:
Drawn by: N. Byrne	Date: 6/18/21
Checked by: V. Kakkad	Scale: NTS

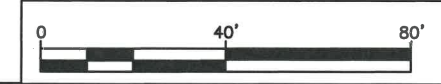


SEE SHEET 5 FOR NORTH OF SR 70

MATCH LINE E



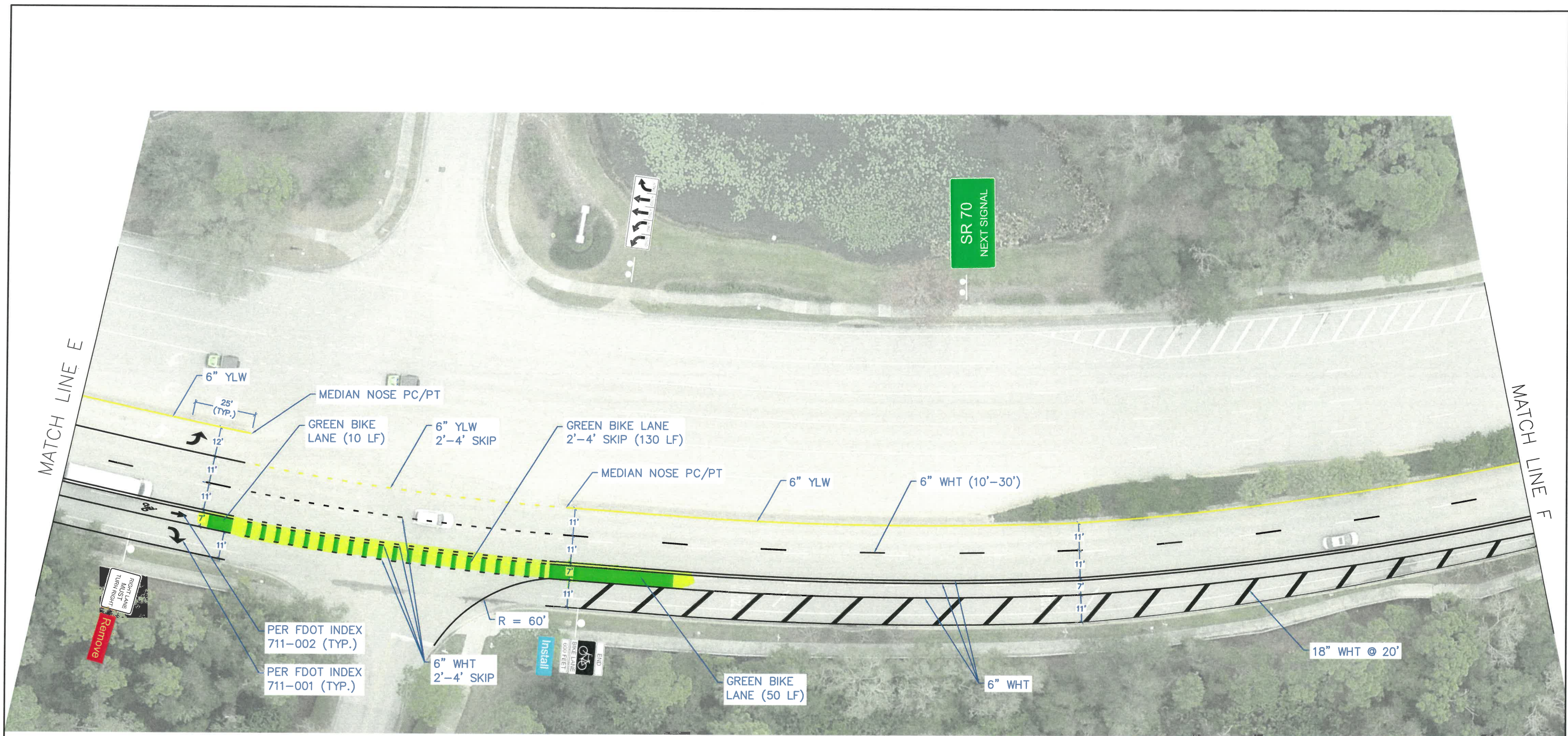
HORIZ. SCALE



Public Works Department  
 Traffic Engineering Division  
 2101 47th Terrace East  
 Bradenton, FL, 34203  
 (941) 749-3500 - phone (941) 749-3571 - fax

## Lakewood Ranch Boulevard: North of Rangeland Parkway to Summerfield Park

Sheet 6	
Designed by: N. Byrne	Dwg. No:
Drawn by: N. Byrne	Date: 6/18/21
Checked by: V. Kakkad	Scale: NTS



HORIZ. SCALE



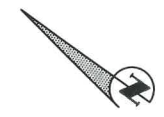
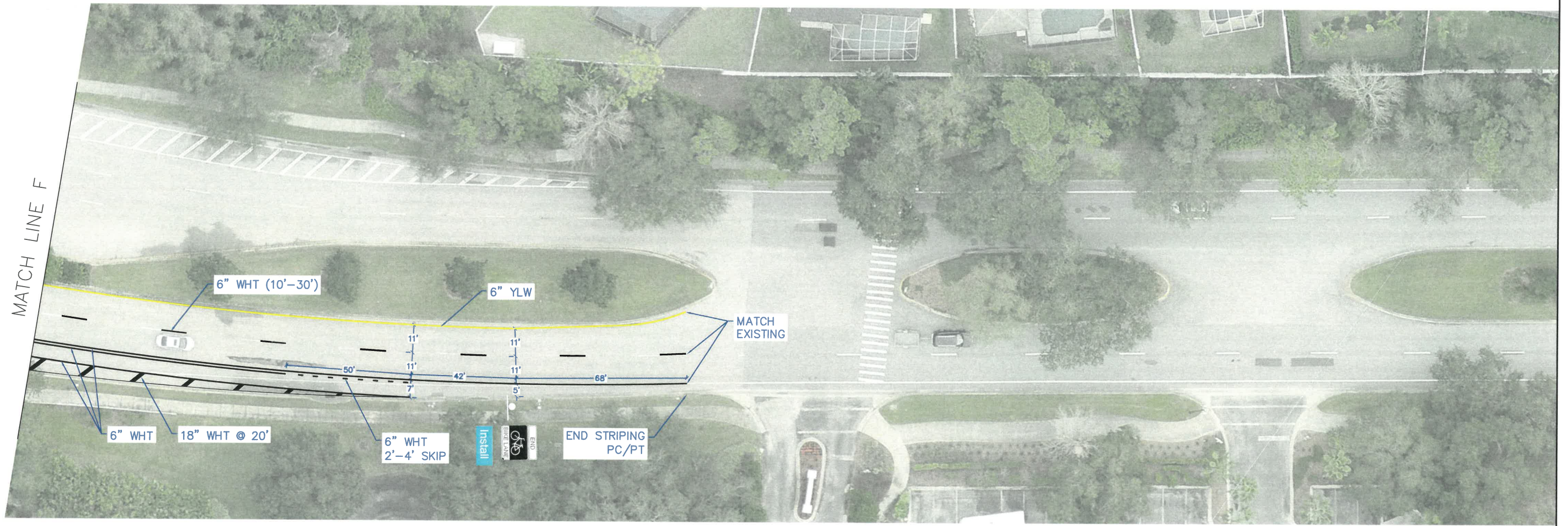
**Public Works Department**  
Traffic Engineering Division  
2101 47th Terrace East  
Bradenton, FL, 34203  
(941) 749-3500 - phone (941) 749-3571 - fax

## Lakewood Ranch Boulevard: North of Rangeland Parkway to Summerfield Park

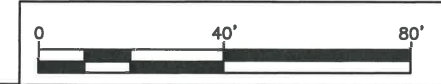
Sheet 7

Designed by: N. Byrne	Dwg. No:
Drawn by: N. Byrne	Date: 6/18/21
Checked by: V. Kakkad	Scale: NTS





HORIZ. SCALE



**Public Works Department**  
 Traffic Engineering Division  
 2101 47th Terrace East  
 Bradenton, FL, 34203  
 (941) 749-3500 - phone (941) 749-3571 - fax

## Lakewood Ranch Boulevard: North of Rangeland Parkway to Summerfield Park

Sheet 8

Designed by: N. Byrne	Dwg. No:
Drawn by: N. Byrne	Date: 6/18/21
Checked by: V. Kakkad	Scale: NTS