



Financial Management Department
Purchasing Division
1112 Manatee Ave W Suite 803
Bradenton, FL 34205
Phone: (941) 749-3074
www.mymanatee.org

email

March 6, 2015

TO: All Interested Bidders

SUBJECT: Invitation for Bid #15-0382DC
Supervisor of Elections Phases 2 and 3

ADDENDUM #3

Bidders are hereby notified that this Addendum shall be acknowledged on the Bid Form and made a part of the above named bidding and contract documents.

1. Bid Form - an electronic copy is available for download. Bid Form signature page is corrected to read: 120 and 160 calendar days for completion. Item 10.06 Roller Shades is added to the Measurement & Payment and the Bid Form.
2. Is there going to be fire alarm drawings available from Global Sanchez for this project? **Response:** Signed and sealed Fire Alarm Plans (61G) with device layouts were provided in the bid package on Sheets FA0.1, FA4.2, FA4.3 and FA8.1. The Contractor is responsible for producing Fire Alarm Shop Drawings to obtain required permits.
3. Who is responsible for disposal of existing equipment? **Response:** The Contractor is responsible for demolition and disposal. Contractor's responsibility for moving any storage equipment, furniture, or fixtures is detailed on the plans.
4. Is there a specific time schedule that is above and beyond normal construction (rush project)? **Response:** Bid per time frames listed on the Bid Form. (Note: Office is closed on Saturday and Sunday.)
5. Are Davis Bacon wages required of this project? **Response:** Section 3 wage and labor standards including the Davis Bacon do not apply to this project.
6. Original locations of panel P and P1 (these are being relocated)? **Response:** Panels P and P1 are currently located in the Assistant Supervisor of Election's Office across the corridor from the Women's Restroom, approximately 25' plan right (east) of relocated location.
7. Verify which panel is feeding panels P and P1. **Response:** Panels P and P1 are fed from MDP in "Maintenance Shop, 3-113".

8. Verify which panel is feeding panel W1 (this is being replace and panel LP is being installed) Capturing feeder from existing W1 and relocating this is impossible; we will have to run conduit over head from source to panel LP new location and pull new wiring. **Response:** During design, it was determined that W1 was fed overhead. Review of site pictures shows main circuit breaker at bottom of panel. This panel may be bottom fed from slab. The Contractor bid shall include a new 200A/4-wire overhead feed from outside MDP to new Panel LP location, demolition of existing feed down to the slab, and removal of conductors back to source. The existing source of Panel W1 shall be determined during construction phase.
9. Verify which panel is feeding panel LP. **Response:** The panel feeding Panel LP shall be determined during construction. New feed from farthest source shall be included in bid submittal.
10. The door schedule calls for 8' x 8' coiling doors; sheets FA4.3 and A3.3.1 both state 8' x 10'. Which is correct? **Response:** 8'-0"w x 8'-0"h doors are to be provided.
11. There is a line item for Data on the bid form. The only work shown is empty conduit with pull string stubbed above the ceiling for CATV and Voice/DATA. Is this correct? **Response:** Line item is for structured cabling to existing racks for data and phones as specified in Addendum 2; and termination as required along with faceplates and testing to make sure it is operational. Line item is for a complete cabling job to the designated outlets.
12. In general, if there is a difference between our quantity take-off and those on the bid form then which do we base the bid on? An example would be square feet of flooring. **Response:** Bids should be based off of the Bid Form items and quantities.
13. Drawing E5.2 states to "capture & extend..." however capturing feeder from existing W1 and relocating this is not possible since it is fed from underground; we will have to run conduit overhead from source to panel LP new location and pull new wiring. Please verify which panel is feeding panel W1 (this is being replace and panel LP is being installed) and which panel is feeding panel LP? **Response:** During design, it was determined Panel W1 is fed from the MDP outside the East wall of Phase III (overhead). Site pictures shows main circuit breaker at bottom of panel; this panel may be bottom fed from slab. Bids shall include a new 200A/4-wire overhead feed from outside MDP to new Panel LP location, demolition of existing feed down to the slab, and removal of conductors back to source.
14. The bid docs request builder's risk insurance. **Response:** Bidders Risk insurance is not a requirement of this project and is not required by the bidder.
15. Opening 3-100A is listed in the door schedule as being wood door by Aluminum frame but given the frame designation of F3. F3 is a 3 sided double door frame with a 4" head and listed as Hollow metal on the elevation drawn. Please clarify as to the frame material and please clarify if the 4" head is necessary if it is to be hollow metal. **Response:** 3-100A is a s.c. wood frame door in a h.m. frame with a 2" head.

16. Opening 2-104 is listed as a wood door by aluminum frame as well but given the designation as F1. F1 is drawn as a 3 sided Hollow Metal fame. Please clarify. Also, the blue prints show that opening as having a sidelight. Is this really an attached side light and if so will it be hollow metal or aluminum and please provide dimensions. **Response:** This is not an attached side lite. Provide s.c. wood door and h.m. frame per schedule with an adjacent window (type B).
17. There are no specifications regarding Hollow metal doors and frames. Please clarify. **Response:** See attached Specification.
18. Hardware set 02 is listing exterior door 3-107. Is a threshold required here? Please clarify. **Response:** Provide ADA accessible door threshold.
19. Opening 3-111 is shown in hardware set 02 and is to receive an exit device. This opening is interior and used to secure a data room. (inswing), is this necessary or can I place in set 03 (set includes cylindrical Storeroom lock). **Response:** Provide Hardware group 03 for door 3-111.
20. Opening 3-107A is not listed in the hardware sets. Please clarify as to which hardware set I should place this opening into. **Response:** Provide hardware group 03 for door 3-107A.
21. Bi-fold door at opening 3-110 has no frame material listed. Please clarify if this will need a wood/hollow metal frame (Cased Open) or if it will simply be mounted to a drywall return. **Response:** Provide cased opening.
22. Should we include Cylinders for the roll-up doors? Please clarify. **Response:** Provide interior slide locks only for roll-up doors.
23. Interior heads of hollow metal frames on sheet A8.1 appear to be drawn as 4" heads. Is this correct? Please clarify. **Response:** 4" door frame heads are required only at masonry wall conditions – see structural sheets for clarification. Contractor to verify wall conditions after demolition and prior to door fabrication.
24. Openings 2-104, 2-106, and 2-107 are calling for a privacy lock on an office door. Is this correct? **Response:** Offices require a key lock for privacy and security. Provide appropriate hardware.
25. Opening 2-109A is not listed in the hardware sets. Please clarify as to which hardware set it should be included in. **Response:** Provide hardware group 02 for door 2-109A.
26. Please clarify as to the hardware you would like me to include in the access control hardware listed in set 04. For example, will the access control supplier be supplying the power supply, motion sensor and request to exit switch. **Response:** Access control hardware shall be provided and coordinated with security company: Tempus Pro Services, David Clark, 1-941-316-8800. Contractor shall tie into existing system with the mag locks and shall use only the magnetic Lock Hardware listed on the schedule.

27. Is there any roof work? If yes then is there an existing warranty that requires a specific roof contractor or warranty re-inspection? **Response:** There are roof penetrations per the plan and existing warranty in place should be verified and maintained. Roofing contractor is: Sutter Roofing, 941-377-1000. (Note: Fire Sprinkler-Piper Fire Protection; Fire Alarm-Bellemare TSI; neither is a required contractor)
28. The schedule is dependent on receiving material timely which is, in turn dependent on the shop drawing & submittal review process. How long should we include in the schedule for the review period? **Response:** See Specification section 013300 Submittal Procedures section 1.5.C.
29. On drawing sheet A3.0 there's a note call out that says to permanently lock remove all hardware. Can you describe the means and methods required to accomplish this? **Response:** Set the lock to the locked position and provide a blank plate for the exterior and key for interior. Key these locks to the Grand Master key only.
30. On drawing sheet A3.2.2 Reflected ceiling plan, the ceiling height in the open work area is shown as 10' AFF and the adjacent room Admin Assistant is shown as 9' AFF. It appears that there is a soffit that breaks up the two ceiling elevations? Please confirm. **Response:** There is a gypsum board/ metal frame soffit separation at this location.
31. On drawing sheet A8.0, Door Legend, the D8 Coiling Door is not shown on the door schedules. Can more information about this coiling door be provided? **Response:** Coiling doors 3-114A, 3-114B, and 3-114C are mislabeled as D6. A specification for these doors is provided in Addendum 2.
32. Opening 1-104 is not shown on the blue prints. Please advise as to the location of this opening. **Response:** This location is in Phase 1 and not within this contract.
33. What is the Category Cable 5e, 6, 6a etc.? **Response:** See cabling specifications, Addendum 2.
34. Do we know if Plenum cable is required? **Response:** See cabling specifications, Addendum 2.
35. Are the voice/data symbols to be single voice & single data, single voice & dual data etc.? **Response:** See cabling specifications, Addendum 2.
36. Will there be Wi-Fi Access Point, Access Control or Video Surveillance Camera wiring required? **Response:** Provide cabling to (3) Wi-Fi future Access Points per the attached drawings.
37. Engineer's estimated construction cost for this project is \$490,000. Please confirm if this budget represents the Owner's maximum limits of funding for this project. **Response:** Budget confirmed.

38. The following items are clarifications/ changes to the Construction Documents:

- a. Eight Cat 6 data lines terminating to 4 double boxes in the completed Phase 1 section shall be added to the project, see attached Sketch for location.
- b. The storage area data drops have been revised to eliminate 7 drop locations to be relocated.
- c. The Vote Tabulation room shall have 8 data drops as shown on the plan.
- d. A data drop shall be located at the monitor location in the conference area (specified on the attached Sketch).

If you have submitted a bid prior to receiving this addendum you may request in writing that your original, sealed bid be returned to your firm. All sealed bids received will be opened on the date stated.

Bids will be received at Manatee County Purchasing, 1112 Manatee Avenue West, Suite 803, Bradenton, Florida 34205 until **March 13, 2015 at 3:00 P.M.**

Sincerely,

A handwritten signature in black ink, appearing to read "Melissa M. Wendel", followed by a horizontal line and the word "for" in a cursive script.

Melissa M. Wendel, CPPO
Purchasing Official

/dcr

Attachments: Section 08113 Hollow Metal Doors and Frames (8 pages)
 Data Drop Revision Sketch (2 pages)
 WiFi Locations (2 plan sheets)
 Measurement & Payment (12 pages)
 Bid Forms A and B
 Information Conference / Site Visit Attendees

SECTION 081113 - HOLLOW METAL DOORS AND FRAMES

PART 1 - GENERAL

1.1 RELATED DOCUMENTS

- A. Drawings and general provisions of the Contract, including General and Supplementary Conditions and Division 01 Specification Sections, apply to this Section.

1.2 SUMMARY

- A. Section Includes:

- 1. Standard hollow metal doors and frames.

- B. Related Sections:

- 1. Division 04 Section "Unit Masonry" for embedding anchors for hollow metal work into masonry construction.
 - 2. Division 08 Section "Door Hardware (Scheduled by Describing Products)" for door hardware for hollow metal doors.
 - 3. Division 09 Sections "Exterior Painting" and "Interior Painting" for field painting hollow metal doors and frames.
 - 4. Division 26 Sections for electrical connections including conduit and wiring for door controls and operators.

1.3 DEFINITIONS

- A. Minimum Thickness: Minimum thickness of base metal without coatings.
- B. Standard Hollow Metal Work: Hollow metal work fabricated according to ANSI/SDI A250.8.

1.4 SUBMITTALS

- A. Product Data: For each type of product indicated. Include construction details, material descriptions, core descriptions, and finishes.
- B. Shop Drawings: Include the following:
 - 1. Elevations of each door design.
 - 2. Details of doors, including vertical and horizontal edge details and metal thicknesses.
 - 3. Frame details for each frame type, including dimensioned profiles and metal thicknesses.
 - 4. Locations of reinforcement and preparations for hardware.
 - 5. Details of each different wall opening condition.
 - 6. Details of anchorages, joints, field splices, and connections.
 - 7. Details of accessories.
 - 8. Details of moldings, removable stops, and glazing.
 - 9. Details of conduit and preparations for power, signal, and control systems.

C. Other Action Submittals:

1. Schedule: Provide a schedule of hollow metal work prepared by or under the supervision of supplier, using same reference numbers for details and openings as those on Drawings. Coordinate with door hardware schedule.

1.5 QUALITY ASSURANCE

- A. Source Limitations: Obtain hollow metal work from single source from single manufacturer.

1.6 DELIVERY, STORAGE, AND HANDLING

- A. Deliver hollow metal work palletized, wrapped, or crated to provide protection during transit and Project-site storage. Do not use nonvented plastic.
1. Provide additional protection to prevent damage to finish of factory-finished units.
- B. Deliver welded frames with two removable spreader bars across bottom of frames, tack welded to jambs and mullions.
- C. Store hollow metal work under cover at Project site. Place in stacks of five units maximum in a vertical position with heads up, spaced by blocking, on minimum 4-inch- high wood blocking. Do not store in a manner that traps excess humidity.
1. Provide minimum 1/4-inch space between each stacked door to permit air circulation.

1.7 PROJECT CONDITIONS

- A. Field Measurements: Verify actual dimensions of openings by field measurements before fabrication.

1.8 COORDINATION

- A. Coordinate installation of anchorages for hollow metal frames. Furnish setting drawings, templates, and directions for installing anchorages, including sleeves, concrete inserts, anchor bolts, and items with integral anchors. Deliver such items to Project site in time for installation.

PART 2 - PRODUCTS

2.1 MANUFACTURERS

- A. Manufacturers: Subject to compliance with requirements, available manufacturers offering products that may be incorporated into the Work include, but are not limited to, the following:
1. Amweld Building Products, LLC.
 2. Benchmark; a division of Therma-Tru Corporation.
 3. Ceco Door Products; an Assa Abloy Group company.
 4. Curries Company; an Assa Abloy Group company.
 5. Deansteel Manufacturing Company, Inc.
 6. Kewanee Corporation (The).

7. Pioneer Industries, Inc.
8. Steelcraft; an Ingersoll-Rand company.

2.2 MATERIALS

- A. Cold-Rolled Steel Sheet: ASTM A 1008/A 1008M, Commercial Steel (CS), Type B; suitable for exposed applications.
- B. Hot-Rolled Steel Sheet: ASTM A 1011/A 1011M, Commercial Steel (CS), Type B; free of scale, pitting, or surface defects; pickled and oiled.
- C. Metallic-Coated Steel Sheet: ASTM A 653/A 653M, Commercial Steel (CS), Type B; with minimum G60 or A60 metallic coating.
- D. Frame Anchors: ASTM A 591/A 591M, Commercial Steel (CS), 40Z coating designation; mill phosphatized.
 1. For anchors built into exterior walls, steel sheet complying with ASTM A 1008/A 1008M or ASTM A 1011/A 1011M, hot-dip galvanized according to ASTM A 153/A 153M, Class B.
- E. Inserts, Bolts, and Fasteners: Hot-dip galvanized according to ASTM A 153/A 153M.
- F. Powder-Actuated Fasteners in Concrete: Fastener system of type suitable for application indicated, fabricated from corrosion-resistant materials, with clips or other accessory devices for attaching hollow metal frames of type indicated.
- G. Grout: ASTM C 476, except with a maximum slump of 4 inches, as measured according to ASTM C 143/C 143M.
- H. Mineral-Fiber Insulation: ASTM C 665, Type I (blankets without membrane facing); consisting of fibers manufactured from slag or rock wool with 6- to 12-lb/cu. ft. density; with maximum flame-spread and smoke-development indexes of 25 and 50, respectively; passing ASTM E 136 for combustion characteristics.
- I. Glazing: Comply with requirements in Division 08 Section "Glazing."
- J. Bituminous Coating: Cold-applied asphalt mastic, SSPC-Paint 12, compounded for 15-mil dry film thickness per coat. Provide inert-type noncorrosive compound free of asbestos fibers, sulfur components, and other deleterious impurities.

2.3 STANDARD HOLLOW METAL DOORS

- A. General: Provide doors of design indicated, not less than thickness indicated; fabricated with smooth surfaces, without visible joints or seams on exposed faces unless otherwise indicated. Comply with ANSI/SDI A250.8.
 1. Design: Flush panel.
 2. Core Construction: Manufacturer's standard kraft-paper honeycomb, polystyrene, polyurethane, polyisocyanurate, mineral-board, or vertical steel-stiffener core.
 - a. Thermal-Rated (Insulated) Doors: Where indicated, provide doors fabricated with thermal-resistance value (R-value) of not less than 6.0 deg F x h x sq. ft./Btu (R-11) when tested according to ASTM C 1363.

- 1) Locations: Exterior doors.
 3. Vertical Edges for Single-Acting Doors: Beveled edge.
 - a. Beveled Edge: 1/8 inch in 2 inches.
 4. Top and Bottom Edges: Closed with flush or inverted 0.042-inch- thick, end closures or channels of same material as face sheets.
 5. Tolerances: Comply with SDI 117, "Manufacturing Tolerances for Standard Steel Doors and Frames."
 - B. Exterior Doors: Face sheets fabricated from metallic-coated steel sheet. Provide doors complying with requirements indicated below by referencing ANSI/SDI A250.8 for level and model and ANSI/SDI A250.4 for physical performance level:
 1. Level 3 and Physical Performance Level A (Extra Heavy Duty), Model 1 (Full Flush).
 - C. Hardware Reinforcement: Fabricate according to ANSI/SDI A250.6 with reinforcing plates from same material as door face sheets.
 - D. Fabricate concealed stiffeners and hardware reinforcement from either cold- or hot-rolled steel sheet.
- 2.4 STANDARD HOLLOW METAL FRAMES
- A. General: Comply with ANSI/SDI A250.8 and with details indicated for type and profile.
 - B. Exterior Frames: Fabricated from metallic-coated steel sheet.
 1. Fabricate frames with mitered or coped corners.
 2. Fabricate frames as full profile welded unless otherwise indicated.
 3. Frames for Level 3 Steel Doors: 0.053-inch- thick steel sheet.
 - C. Hardware Reinforcement: Fabricate according to ANSI/SDI A250.6 with reinforcement plates from same material as frames.
- 2.5 FRAME ANCHORS
- A. Jamb Anchors:
 1. Masonry Type: Adjustable strap-and-stirrup or T-shaped anchors to suit frame size, not less than 0.042 inch thick, with corrugated or perforated straps not less than 2 inches wide by 10 inches long; or wire anchors not less than 0.177 inch thick.
- 2.6 HOLLOW METAL PANELS
- A. Provide hollow metal panels of same materials, construction, and finish as specified for adjoining hollow metal work.
- 2.7 STOPS AND MOLDINGS

- A. Moldings for Glazed Lites in Doors: Minimum 0.032 inch thick, fabricated from same material as door face sheet in which they are installed.
- B. Fixed Frame Moldings: Formed integral with hollow metal frames, a minimum of 5/8 inch high unless otherwise indicated.
- C. Loose Stops for Glazed Lites in Frames: Minimum 0.032 inch thick, fabricated from same material as frames in which they are installed.

2.8 ACCESSORIES

- A. Mullions and Transom Bars: Join to adjacent members by welding or rigid mechanical anchors.
- B. Grout Guards: Formed from same material as frames, not less than 0.016 inch thick.

2.9 FABRICATION

- A. Fabricate hollow metal work to be rigid and free of defects, warp, or buckle. Accurately form metal to required sizes and profiles, with minimum radius for thickness of metal. Where practical, fit and assemble units in manufacturer's plant. To ensure proper assembly at Project site, clearly identify work that cannot be permanently factory assembled before shipment.
- B. Tolerances: Fabricate hollow metal work to tolerances indicated in SDI 117.
- C. Hollow Metal Doors:
 - 1. Exterior Doors: Provide weep-hole openings in bottom of exterior doors to permit moisture to escape. Seal joints in top edges of doors against water penetration.
 - 2. Glazed Lites: Factory cut openings in doors.
- D. Hollow Metal Frames: Where frames are fabricated in sections due to shipping or handling limitations, provide alignment plates or angles at each joint, fabricated of same thickness metal as frames.
 - 1. Welded Frames: Weld flush face joints continuously; grind, fill, dress, and make smooth, flush, and invisible.
 - 2. Provide countersunk, flat- or oval-head exposed screws and bolts for exposed fasteners unless otherwise indicated.
 - 3. Grout Guards: Weld guards to frame at back of hardware mortises in frames to be grouted.
 - 4. Jamb Anchors: Provide number and spacing of anchors as follows:
 - a. Masonry Type: Locate anchors not more than 18 inches from top and bottom of frame. Space anchors not more than 32 inches o.c. and as follows:
 - 1) Two anchors per jamb up to 60 inches high.
 - 2) Three anchors per jamb from 60 to 90 inches high.
 - 3) Four anchors per jamb from 90 to 120 inches high.
 - 4) Four anchors per jamb plus 1 additional anchor per jamb for each 24 inches or fraction thereof above 120 inches high.
 - 5. Door Silencers: Except on weather-stripped doors, drill stops to receive door silencers as follows. Keep holes clear during construction.
 - a. Single-Door Frames: Drill stop in strike jamb to receive three door silencers.

- b. Double-Door Frames: Drill stop in head jamb to receive two door silencers.
- E. Fabricate concealed stiffeners, edge channels, and hardware reinforcement from either cold- or hot-rolled steel sheet.
- F. Hardware Preparation: Factory prepare hollow metal work to receive templated mortised hardware; include cutouts, reinforcement, mortising, drilling, and tapping according to the Door Hardware Schedule and templates furnished as specified in Division 08 Section "Door Hardware."
 - 1. Locate hardware as indicated, or if not indicated, according to ANSI/SDI A250.8.
 - 2. Reinforce doors and frames to receive nontemplated, mortised and surface-mounted door hardware.
 - 3. Comply with applicable requirements in ANSI/SDI A250.6 and ANSI/DHI A115 Series specifications for preparation of hollow metal work for hardware.
 - 4. Coordinate locations of conduit and wiring boxes for electrical connections with Division 26 Sections.
- G. Stops and Moldings: Provide stops and moldings around glazed lites where indicated. Form corners of stops and moldings with butted or mitered hairline joints.
 - 1. Single Glazed Lites: Provide fixed stops and moldings welded on secure side of hollow metal work.
 - 2. Multiple Glazed Lites: Provide fixed and removable stops and moldings so that each glazed lite is capable of being removed independently.
 - 3. Provide fixed frame moldings on outside of exterior and on secure side of interior doors and frames.
 - 4. Provide loose stops and moldings on inside of hollow metal work.
 - 5. Coordinate rabbet width between fixed and removable stops with type of glazing and type of installation indicated.

2.10 STEEL FINISHES

- A. Prime Finish: Apply manufacturer's standard primer immediately after cleaning and pretreating.
 - 1. Shop Primer: Manufacturer's standard, fast-curing, lead- and chromate-free primer complying with ANSI/SDI A250.10 acceptance criteria; recommended by primer manufacturer for substrate; compatible with substrate and field-applied coatings despite prolonged exposure.

PART 3 - EXECUTION

3.1 EXAMINATION

- A. Examine substrates, areas, and conditions, with Installer present, for compliance with requirements for installation tolerances and other conditions affecting performance of the Work.
- B. Examine roughing-in for embedded and built-in anchors to verify actual locations before frame installation.
- C. For the record, prepare written report, endorsed by Installer, listing conditions detrimental to performance of the Work.
- D. Proceed with installation only after unsatisfactory conditions have been corrected.

3.2 PREPARATION

- A. Remove welded-in shipping spreaders installed at factory. Restore exposed finish by grinding, filling, and dressing, as required to make repaired area smooth, flush, and invisible on exposed faces.
- B. Prior to installation, adjust and securely brace welded hollow metal frames for squareness, alignment, twist, and plumbness to the following tolerances:
 - 1. Squareness: Plus or minus 1/16 inch, measured at door rabbet on a line 90 degrees from jamb perpendicular to frame head.
 - 2. Alignment: Plus or minus 1/16 inch, measured at jambs on a horizontal line parallel to plane of wall.
 - 3. Twist: Plus or minus 1/16 inch, measured at opposite face corners of jambs on parallel lines, and perpendicular to plane of wall.
 - 4. Plumbness: Plus or minus 1/16 inch, measured at jambs on a perpendicular line from head to floor.
- C. Drill and tap doors and frames to receive nontemplated, mortised, and surface-mounted door hardware.

3.3 INSTALLATION

- A. General: Install hollow metal work plumb, rigid, properly aligned, and securely fastened in place; comply with Drawings and manufacturer's written instructions.
- B. Hollow Metal Frames: Install hollow metal frames of size and profile indicated. Comply with ANSI/SDI A250.11.
 - 1. Set frames accurately in position, plumbed, aligned, and braced securely until permanent anchors are set. After wall construction is complete, remove temporary braces, leaving surfaces smooth and undamaged.
 - a. Where frames are fabricated in sections because of shipping or handling limitations, field splice at approved locations by welding face joint continuously; grind, fill, dress, and make splice smooth, flush, and invisible on exposed faces.
 - b. Install frames with removable glazing stops located on secure side of opening.
 - c. Install door silencers in frames before grouting.
 - d. Remove temporary braces necessary for installation only after frames have been properly set and secured.
 - e. Check plumbness, squareness, and twist of frames as walls are constructed. Shim as necessary to comply with installation tolerances.
 - f. Field apply bituminous coating to backs of frames that are filled with grout containing antifreezing agents.
 - 2. Masonry Walls: Coordinate installation of frames to allow for solidly filling space between frames and masonry with grout.
 - 3. Installation Tolerances: Adjust hollow metal door frames for squareness, alignment, twist, and plumb to the following tolerances:
 - a. Squareness: Plus or minus 1/16 inch, measured at door rabbet on a line 90 degrees from jamb perpendicular to frame head.
 - b. Alignment: Plus or minus 1/16 inch, measured at jambs on a horizontal line parallel to plane of wall.
 - c. Twist: Plus or minus 1/16 inch, measured at opposite face corners of jambs on parallel lines, and perpendicular to plane of wall.

- d. Plumbness: Plus or minus 1/16 inch, measured at jambs at floor.
- C. Hollow Metal Doors: Fit hollow metal doors accurately in frames, within clearances specified below. Shim as necessary.
 - 1. Non-Fire-Rated Standard Steel Doors:
 - a. Jambs and Head: 1/8 inch plus or minus 1/16 inch.
 - b. Between Edges of Pairs of Doors: 1/8 inch plus or minus 1/16 inch.
 - c. Between Bottom of Door and Top of Threshold: Maximum 3/8 inch.
 - d. Between Bottom of Door and Top of Finish Floor (No Threshold): Maximum 3/4 inch.
- D. Glazing: Comply with installation requirements in Division 08 Section "Glazing" and with hollow metal manufacturer's written instructions.
 - 1. Secure stops with countersunk flat- or oval-head machine screws spaced uniformly not more than 9 inches o.c. and not more than 2 inches o.c. from each corner.

3.4 ADJUSTING AND CLEANING

- A. Final Adjustments: Check and readjust operating hardware items immediately before final inspection. Leave work in complete and proper operating condition. Remove and replace defective work, including hollow metal work that is warped, bowed, or otherwise unacceptable.
- B. Remove grout and other bonding material from hollow metal work immediately after installation.
- C. Prime-Coat Touchup: Immediately after erection, sand smooth rusted or damaged areas of prime coat and apply touchup of compatible air-drying, rust-inhibitive primer.
- D. Metallic-Coated Surfaces: Clean abraded areas and repair with galvanizing repair paint according to manufacturer's written instructions.

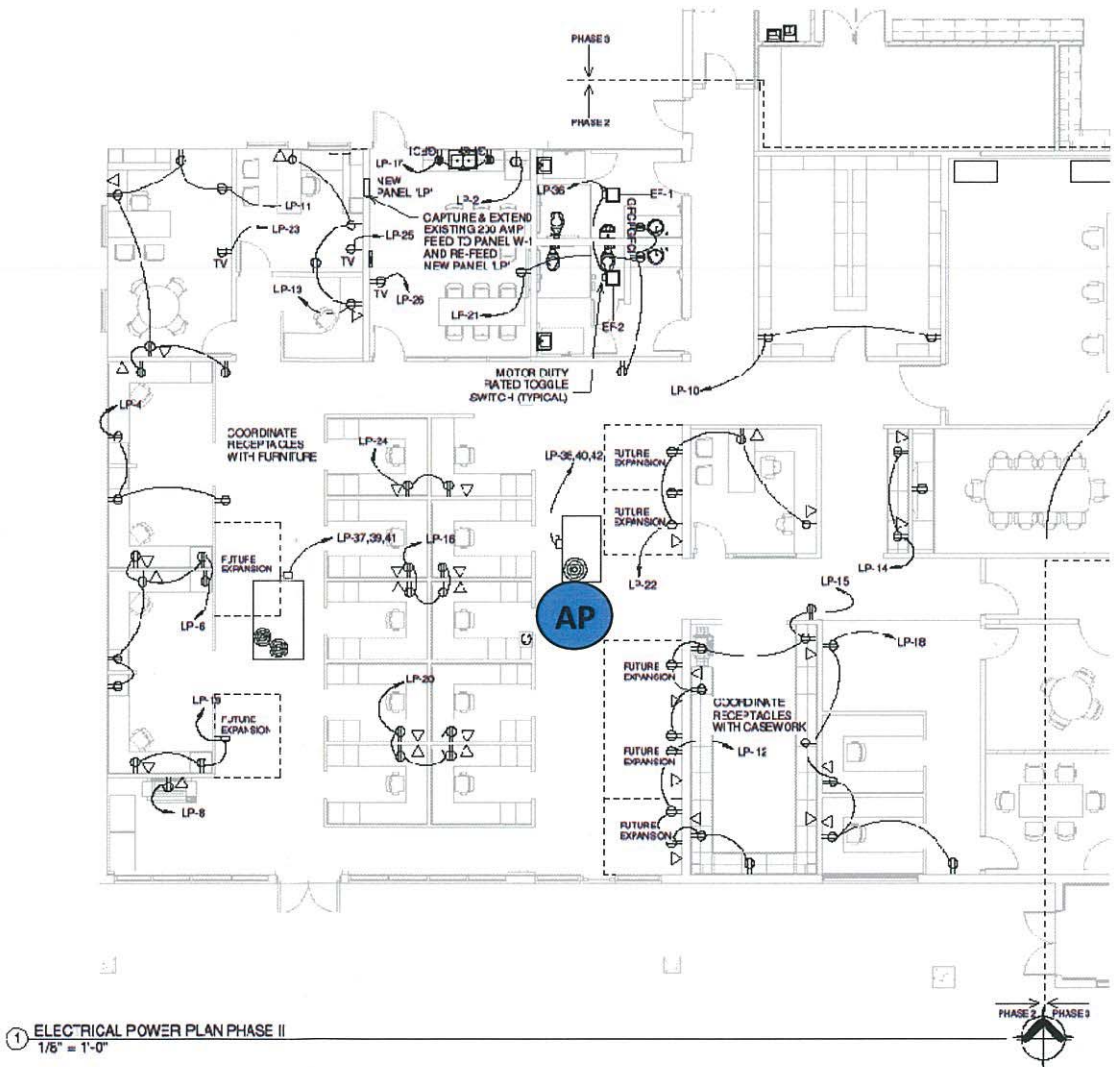
END OF SECTION 081113

MANATEE COUNTY SUPERVISOR OF
ELECTIONS

ELECTRICAL POWER PLAN PHASE I

Project No. 201301906
Drawn By NMF
Checked By PJF
Date 01/20/2014

Revisions:



1 ELECTRICAL POWER PLAN PHASE II
1/8" = 1'-0"

▲ - Two (2) Data (Cat6-Plenum)

AP - One (1) Data (Cat6-Plenum)
terminated on single jack in
ceiling for Access Point

"To the best of the Architect's or
Engineer's knowledge, the plans
and specifications comply with the
applicable minimum building codes
and applicable fire safety standards
as determined by local authority in
accordance with Chapter 55.03 and
600 of Florida Statutes."

CONSTRUCTION
DOCUMENTS

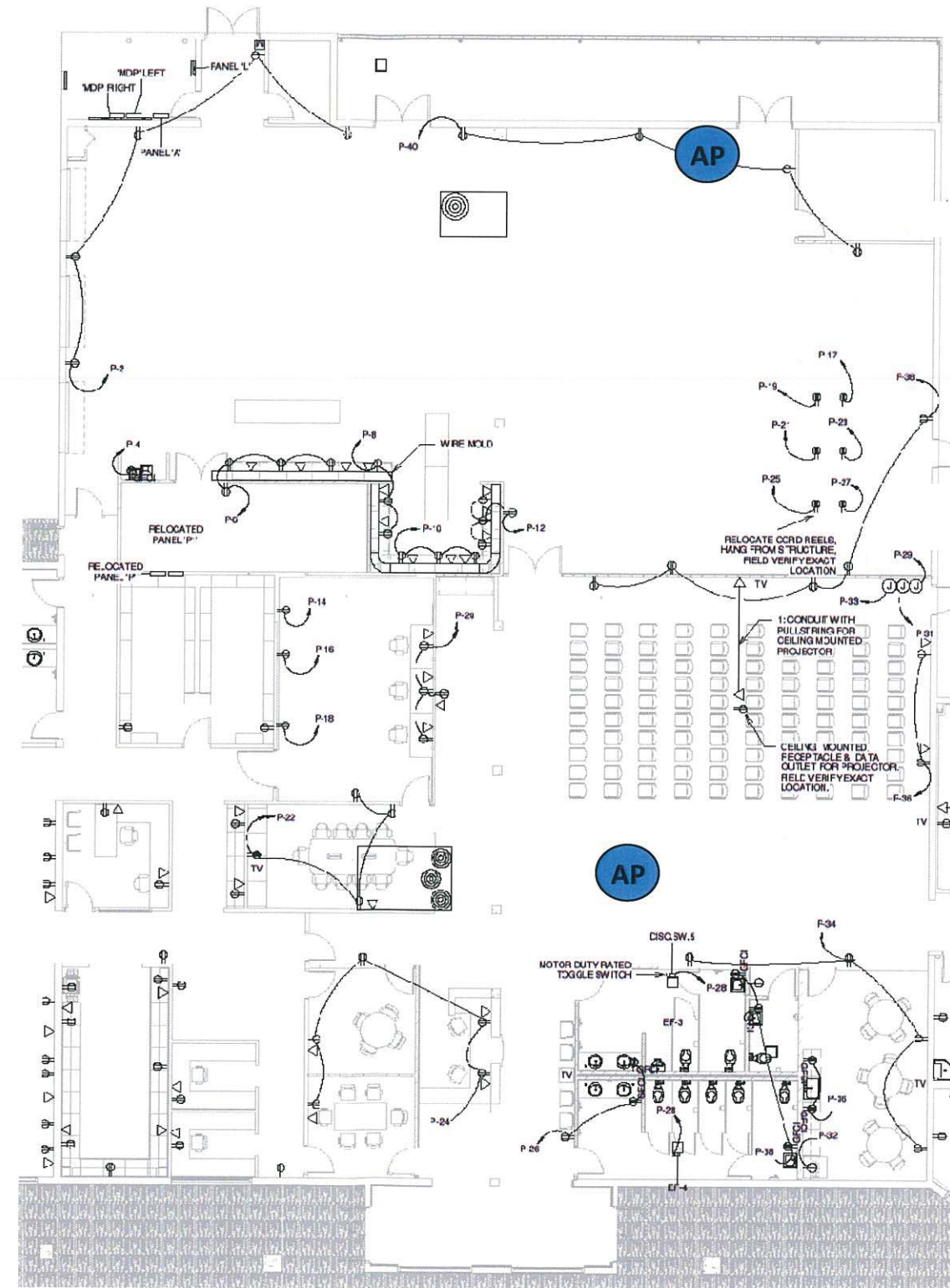
E5.2

Originals printed @ 24" x 36"
scale as required
All rights reserved © 2011

GLOBAL
SANCHEZ, INC.
BUILDING SYSTEMS ENGINEERING
Info@global-sanchez.com CM# 6027
Job Number: 409815.00
Bradenton: 815 Manatee Ave. E, Suite 16
Bradenton, FL 34205
Phone: 941-755-2551
Tampa: 3825 Henderson Blvd., Suite 103
Tampa, FL 33629
Phone: 813-281-0001

C:\Users\jcast\Documents\CENTRAL - 4114 13 PC_Misc.rvt
1/26/2014 11:25:14 AM

- ▲ - Two (2) Data (Cat6-Plenum)
- AP - One (1) Data (Cat6-Plenum)
terminated on single jack in
ceiling for Access Point



1 ELECTRICAL POWER PLAN PHASE II
1/8" = 1'-0"



Job Number: 4096.13.00
GLOBAL SANCHEZ, INC
BUILDING SYSTEMS ENGINEERING
info@global-sanchez.com 813.622.7777
Bradenton: 610 Manatee Ave. E., Suite 10
Bradenton, FL 34208
Phone: 813-759-2551
Tampa: 3825 Henderson Blvd., Suite 103
Tampa, FL 33629
Phone: 813-281-0001

CONSTRUCTION DOCUMENTS
E5.3
Originals printed @ 24" x 36"
scale as required
All rights reserved © 2011

Project No. 2012019.06
Drawn By N.H.
Checked By P.T.
Date 31/28/2014
Revisions:

MANATEE COUNTY SUPERVISOR OF
ELECTIONS

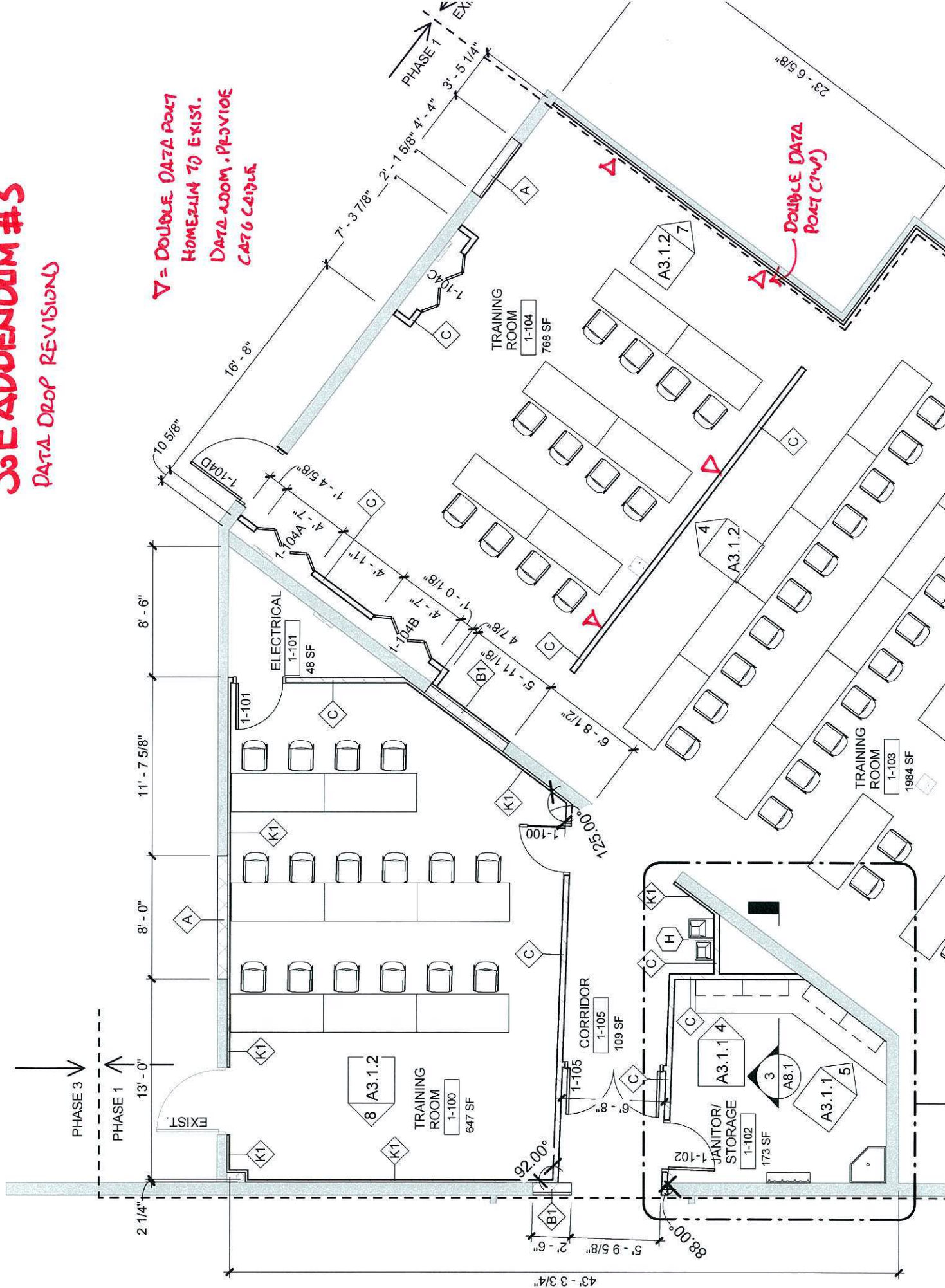
ELECTRICAL POWER PLAN PHASE III

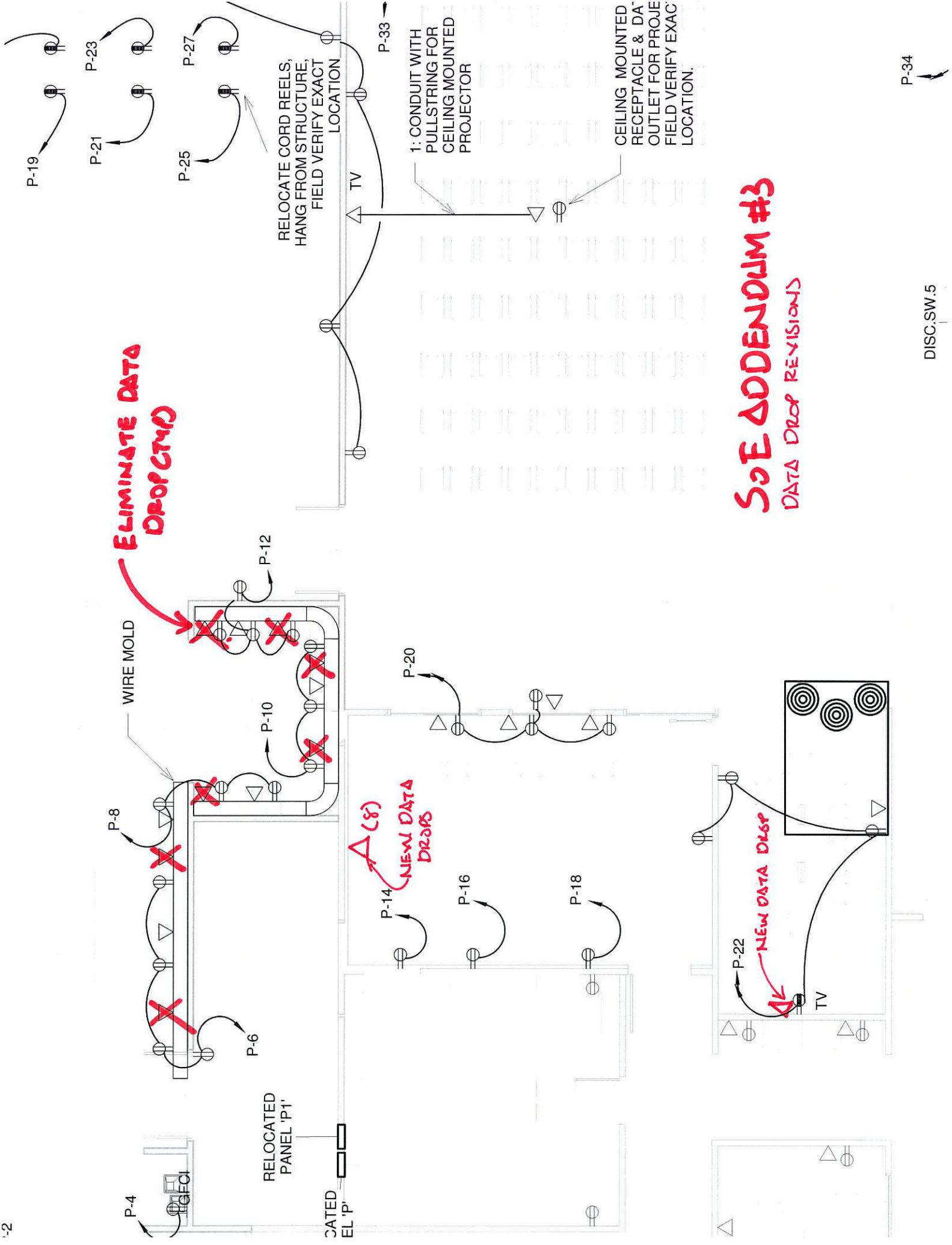
FAWLEY BRYANT
ARCHITECTURE • INTERIOR PLANNING
FAWLEY BRYANT ARCHITECTS, INC.
5351 LAKWOOD FANCHER BLVD., NORTH, SUITE 200
SANASUA, FL 33460
PH 941.343.4070 FX 941.746.5747
www.fawleybryant.com

DATA DROP REVISIONS

$\nabla =$ DOUBLE DATA POINT
HOMERUNN TO EXIST.
DATA ROOM. PREVIOUS
CATO CATHY

DOUBLE DATA PORT (7ms)





SEE ADDENDUM #3 DATA DROP REVISIONS

SECTION 012000 – MEASUREMENT AND PAYMENT

PART 1 - GENERAL

1.1 SCOPE

- A. The scope of this section of the Contract Specifications is to further define the items included in each Bid Item in the Bid Form section of the Contract Documents. Payment will be made based on the specified items included in the description in this section for each bid item.
- B. All contract prices included in the Bid Form section will be full compensation for all required work, identified or not, required, including but not limited to shop drawings, working drawings, labor, materials, tools, equipment, incidentals and mobilization necessary to complete the requirements of this project, as shown on the Drawings and/or as specified in the Contract Specifications to be performed under this Contract. Actual quantities of each item bid on a unit price basis will be determined upon completion of the construction in the manner set up for each item in this section of the Specifications. Payment for all items listed in the Bid Form will constitute full compensation for all work required to render a complete product, specified to be performed under this Contract.

1.2 EXPLANATION AND DEFINITIONS

- A. The following explanation of the Measurement and Payment for the Bid Schedule items is made for information and guidance. The omission of reference to any item in this description shall not, however, alter the intent of the Bid Schedule or relieve the CONTRACTOR of the necessity of furnishing such as a part of the Contract. Measurement and payment for all Contract Items shall made be in accordance with this section or as modified by the Supplemental Terms and Conditions.

1.3 MEASUREMENT

The quantities set forth in the Bid Schedule are approximate and are given to establish a uniform basis for the comparison of bids. The COUNTY reserves the right to increase or decrease the quantity of any class or portion of the work during the progress of construction in accord with the terms of the Contract.

1.4 PAYMENT

- A. Make payment for the items listed on the Bid Schedule on the basis of the work actually performed and completed, such work including but not limited to, the furnishing of all necessary labor, materials, equipment, transportation, clean up, restoration of disturbed areas, and all other appurtenances to complete the construction and installation of the work as shown on the drawings and described in the specifications.
- B. Unit prices are used as a means of computing the final figures for bid and Contract purposes, for periodic payments for work performed, for determining value of additions or deletions and wherever else reasonable.
- C. Lump sum items
 - 1. Where payment for items is shown to be paid for on a lump sum basis, no separate payment will be made for any item of work required to complete the lump sum items. Lump sum contracts shall

be complete, tested and fully operable prior to request for final payment. Contractor shall be required to provide a break-down of the lump sum totals in their schedule of values.

D. Unit price items

1. Separate payment will be made for the items of work described herein and listed on the Bid Form as a unit price item. Any related work not specifically listed, but required for satisfactory completion of the work shall be considered to be included in the scope of the appropriate listed work items.
2. No separate payment will be made for the following items and the cost of such work shall be included in the applicable pay items of work. Final payments shall not be requested by the Contractor or made by the County until as-built (record) drawings have been submitted and approved by the County.
 - a. Shop Drawings, Working Drawings
 - b. Cleanup and miscellaneous work
 - c. Testing and placing systems in operation
 - d. Any material and equipment required to be installed and utilized for the tests
 - e. Maintaining the existing quality of service during construction
 - f. Maintaining or detouring of traffic
 - g. Appurtenant work as required for a complete and operable system
 - h. As-built record drawings

1.5 SCHEDULE OF VALUES

- A. Approval of Schedule: Submit for approval a schedule of values, in duplicate, for all of the Work. Prepare schedule of values as based on the County provided schedule of values, and submit within 10 calendar days after the Effective Date of the Agreement. Submit final schedule of values in accordance with the Terms and Conditions of the Agreement.
- B. Format: Utilize a format similar to the Table of Contents of the Project Specifications. Identify each line item with number and title of the major specification items. Identify site mobilization, bonds and insurance. Include within each line item, a direct proportional amount of Contractor's overhead profit.
- C. Contractor to use County provided pay application form only for payment submission. All other forms shall be rejected.
- D. Revisions: With each application for Payment, revise schedule to list approved Change Orders.

PART 2 - PRODUCTS (Not Used)

PART 3 - EXECUTION

3.1 MEASUREMENT AND PAYMENT (BID FORM ITEMS)

- A. Make payment on the basis of work actually performed completing each item in the Bid, such work including, but not limited to, the furnishing of all necessary labor, materials, equipment, transportation, cleanup, and all other appurtenances to complete the construction and installation of the work to the configuration and extent as shown on the drawings and described in the specifications. Payment for each item includes compensation for cleanup and restorations. Cost of cleanup and surface restorations will be considered as the percentage retained in accordance with the Contract Documents, and complete payment will not be made until cleanup, restorations and as-builts are completed.

1. 1.01 Mobilization: Measurement and payment for the Mobilization Bid Item shall include full compensation for the required 100 percent (100%) Performance Bond, 100 Percent (100%) Payment Bond, all required insurance for the project, and any permits not already obtained by the County. This may include those operations necessary for the movement of personnel, equipment, supplies, and incidentals to the project site and for the establishment of temporary offices, safety equipment and first aid supplies, and sanitary and other facilities/utilities. The mobilization pay item also includes demobilization of all equipment, personnel, supplies and incidentals from the project site upon final completion. Payment for mobilization shall not exceed 10 percent (10%) of the total Contract cost unless the Contractor can prove to the County that his actual mobilization cost exceeds 10 percent (10%). The basis of payment for all work associated with Mobilization shall be paid for under the Lump Sum Pay Item and in accordance with the following schedule:

Percent of the Total Contract Amount Earned	Allowable Percent of the Lump Sum Price for Mobilization
5	25
10	50
25	75
100	100

2. 1.02 Demolition: Measurement and payment for this Bid Item shall include full compensation for all required work included to complete this portion of this project, the removal of specified items in and around the site. Payment for all work included under this Bid Item shall represent full compensation in accordance with the lump sum price bid for the work required. Contractor shall provide a breakdown of all scope and material for review along with the bid package. All work covered for this Item is included in Sheets A3.2.1, A3.3.1, M3.2, M3.3, P2.2, P2.3.
3. 2.01 Existing Asphalt Repair: Measurement and payment for this Bid Item shall include full compensation for all required work included to complete this portion of this project, rendering the existing drive back to full service. Provide and install all repairs as required by the new construction as shown on the plans. Payment for all work included under this Bid Item shall represent full compensation in accordance with the unit price bid for the work required. All work covered for this Item is included on Sheet A1.1. Before final payment is completed the drive work shall be inspected and accepted by the Architect and Manatee County Property Management.
4. 3.01 Exterior Openings - Windows: Measurement and payment for this Bid Item shall include full compensation for all required work included to complete this portion of this project, rendering a complete and operable system. Provide and install new opening structure as shown on the plans. Payment for all work included under this Bid Item shall represent full compensation in accordance with the unit price bid for the work required. All work covered for this Item is included on Sheets A3.2.1, S0.0.1, S3.3.1, S4.1.1 and S4.2.1. Before final payment is completed the work shall be inspected and accepted by the Architect, Structural Engineer and Manatee County Property Management.
5. 3.02 Exterior Openings – Man Doors: Measurement and payment for this Bid Item shall include full compensation for all required work included to complete this portion of this project, rendering a complete and operable system. Provide and install new opening structure as shown on the plans. Payment for all work included under this Bid Item shall represent full compensation in accordance with the unit price bid for the work required. All work covered for this Item is included on Sheets A3.2.1, A3.3.1, S0.0.1, S3.3.1, S4.1.1 and S4.2.1. Before final payment is completed the work shall be inspected and accepted by the Architect, Structural Engineer and Manatee County Property Management.
6. 3.03 Exterior Openings – Truck Doors: Measurement and payment for this Bid Item shall include full compensation for all required work included to complete this portion of this project, rendering a complete and operable system. Provide and install new opening structure as shown on the plans. Payment for all work included under this Bid Item shall represent full compensation in accordance with the unit price bid for the work required. All work covered for this Item is included on Sheets A3.3.1, S0.0.1, S3.3.1, S4.1.1 and S4.2.1. Before final payment is completed the work shall be inspected and accepted by the Architect, Structural Engineer and Manatee County Property Management.

7. 3.04 Existing Slab Repair: Measurement and payment for this Bid Item shall include full compensation for all required work included to complete this portion of this project, rendering a complete and operable system. Provide and install repairs to the existing slab as required for installation of new plumbing and electrical. Payment for all work included under this Bid Item shall represent full compensation in accordance with the unit price bid for the work required. All work covered for this Item is included on the Mechanical and Electrical Plans. Before final payment is completed the work shall be inspected and accepted by the Architect, Structural Engineer and Manatee County Property Management.
8. 3.04 Interior Masonry Openings: Measurement and payment for this Bid Item shall include full compensation for all required work included to complete this portion of this project, rendering a complete and finished product. Provide and install interior masonry openings and required structure as shown on the plans. Payment for all work included under this Bid Item shall represent full compensation in accordance with the lump sum bid for the work required. All work covered for this Item is included on Sheets A3.2.1, A3.3.1 and the structural sheets. Contractor shall provide a breakdown of all scope and material for review along with the bid package. Before final payment is completed the work shall be inspected and accepted by the Architect, Structural Engineer and Manatee County Property Management.
9. 5.01 Interior Metal Framing: Measurement and payment for this Bid Item shall include full compensation for all required work included to complete this portion of this project, rendering a complete and finished product. Provide and install interior metal framing as shown on the plans. Payment for all work included under this Bid Item shall represent full compensation in accordance with the lump sum bid for the work required. All work covered for this Item is included in the Architectural drawings as well as the specifications on Sheet S0.0.1. Contractor shall provide a breakdown of all scope and material for review along with the bid package. Before final payment is completed the framing work shall be inspected and accepted by the Architect and Manatee County Property Management.
10. 5.02 Miscellaneous Structural Steel: Measurement and payment for this Bid Item shall include full compensation for all required work included to complete this portion of this project, rendering a complete and finished product. Provide and install all structural steel as shown on the plans. Payment for all work included under this Bid Item shall represent full compensation in accordance with the lump sum bid for the work required. All work covered for this Item is included on the structural drawings. Before final payment is completed the drive work shall be inspected and accepted by the Architect, Structural Engineer, and Manatee County Property Management.
11. 6.01 Reception Desk: Measurement and payment for this Bid Item shall include full compensation for all required work included to complete this portion of this project, rendering a complete and finished product. Provide and install reception desk casework as shown on the plans. Payment for all work included under this Bid Item shall represent full compensation in accordance with the lump sum bid for the work required. Contractor shall provide a breakdown of all scope and material for review along with the bid package. All work covered for this Item is included on Sheets A3.3.1, A9.3, and Specification Section 064100. Before final payment is completed the work shall be inspected and accepted by the Architect and Manatee County Property Management.
12. 6.02 Cabinetry – Base Cabinets: Measurement and payment for this Bid Item shall include full compensation for all required work included to complete this portion of this project, rendering a complete and finished product. Provide and install cabinetry as shown on the plans. Payment for all work included under this Bid Item shall represent full compensation in accordance with the unit price bid for the work required. All work covered for this Item is included on Sheets A3.3.1, 3.3.2, A9.1, A9.2, A9.3 and Specification Section 064100. Before final payment is completed the work shall be inspected and accepted by the Architect and Manatee County Property Management.
13. 6.03 Cabinetry – Upper Cabinets: Measurement and payment for this Bid Item shall include full compensation for all required work included to complete this portion of this project, rendering a complete and operable system. Provide and install cabinetry as shown on the plans. Payment for all work included under this Bid Item shall represent full compensation in accordance with the unit price bid for the work required. All work covered for this Item is included on Sheets A3.3.1, 3.3.2, A9.1, A9.2, A9.3 and Specification Section 064100. Before final payment is completed the work shall be inspected and accepted by the Architect and Manatee County Property Management.

14. 6.03 Countertops – 24” P. Lam: Measurement and payment for this Bid Item shall include full compensation for all required work included to complete this portion of this project, rendering a complete and operable system. Provide and install countertops as shown on the plans. Payment for all work included under this Bid Item shall represent full compensation in accordance with the unit price bid for the work required. All work covered for this Item is included on Sheets A3.3.1, 3.3.2, A9.1, A9.2, A9.3 and Specification Section 064100. Before final payment is completed the work shall be inspected and accepted by the Architect and Manatee County Property Management.
15. 8.01 Overhead Coiling Doors: Measurement and payment for this Bid Item shall include full compensation for all required work included to complete this portion of this project, rendering a complete and operable system. Provide and install all Overhead Coiling Doors as shown on the plans. Payment for all work included under this Bid Item shall represent full compensation in accordance with the unit price bid for the work required. All work covered for this Item is included in Sheets A3.3.1 and A8.1 and related specification sections. Before final payment is completed the Overhead Coiling Doors shall be inspected and accepted by the Architect and Manatee County Property Management.
16. 8.02 Wood Doors, Frames, and Hardware: Measurement and payment for this Bid Item shall include full compensation for all required work included to complete this portion of this project, rendering a complete and operable system. Provide and install all Wood Doors, Door Frames, and Hardware as shown on the plans. Payment for all work included under this Bid Item shall represent full compensation in accordance with the unit price bid for the work required. All work covered for this Item is included in Sheets A3.2.1, A3.3.1, A8.1 and related specification sections. Before final payment is completed the Wood Doors, Door Frames and Hardware shall be inspected and accepted by the Architect and Manatee County Property Management.
17. 8.03 HM Doors, Frames, and Hardware: Measurement and payment for this Bid Item shall include full compensation for all required work included to complete this portion of this project, rendering a complete and operable system. Provide and install all Hollow Metal Doors, Door Frames, and Hardware as shown on the plans. Payment for all work included under this Bid Item shall represent full compensation in accordance with the unit price bid for the work required. All work covered for this Item is included in Sheets A3.2.1, A3.3.1, A8.1 and related specification sections. Before final payment is completed the Hollow Metal Doors, Door Frames and Hardware shall be inspected and accepted by the Architect and Manatee County Property Management.
18. 8.04 Interior Glazing (Doors): Measurement and payment for this Bid Item shall include full compensation for all required work included to complete this portion of this project, rendering a complete and operable system. Provide and install all Interior Glazing (doors) as shown on the plans. Payment for all work included under this Bid Item shall represent full compensation in accordance with the unit price bid for the work required. All work covered for this Item is included in Sheets A3.2.1, A3.3.1, A8.1 and related specification sections. Before final payment is completed the Interior Glazing shall be inspected and accepted by the Architect and Manatee County Property Management.
19. 8.05 Exterior Storefront: Measurement and payment for this Bid Item shall include full compensation for all required work included to complete this portion of this project, rendering a complete and operable system. Provide and install all Exterior Storefront as shown on the plans. Payment for all work included under this Bid Item shall represent full compensation in accordance with the unit price bid for the work required. All work covered for this Item is included in Sheets A3.2.1, A8.1 and related specification sections. Before final payment is completed the Exterior Storefront shall be inspected and accepted by the Architect and Manatee County Property Management.
20. 8.06 Access Control: Measurement and payment for this Bid Item shall include full compensation for all required work included to complete this portion of this project, rendering a complete and operable system. Provide and install all Access Controls as shown on the plans or as required by Manatee County Property Management. Payment for all work included under this Bid Item shall represent full compensation in accordance with the lump sum bid for the work required. Contractor shall provide a breakdown of all scope and material for review along with the bid package. All work covered for this Item is included in Sheets A3.2.1, A3.3.1, A8.1 and related specification sections. Before final payment is completed the Interior Glazing shall be inspected and accepted by the Architect and Manatee County Property Management.

21. 9.01 Gypsum Assemblies: Measurement and payment for this Bid Item shall include full compensation for all required work included to complete this portion of this project, rendering a complete and operable system. Provide and install all drywall and framing as shown on the plans. Payment for all work included under this Bid Item shall represent full compensation in accordance with the lump sum bid for the work required. Contractor shall provide a breakdown of all scope and material for review along with the bid package. All work covered for this Item is included in Sheets A3.2.1, A3.3.1, A7.0, A8.1 and A8.2. Before final payment is completed the Framing and Drywall shall be inspected and accepted by the Architect and Manatee County Property Management.
22. 9.02 Drywall and Framing – Patch and Texture: Measurement and payment for this Bid Item shall include full compensation for all required work included to complete this portion of this project, rendering a complete and operable system. Patch and repair/ retexture all affected drywall and framing as shown on the plans. Payment for all work included under this Bid Item shall represent full compensation in accordance with the lump sum bid for the work required. Contractor shall provide a breakdown of all scope and material for review along with the bid package. All work covered for this Item is included in Sheets A3.2.1 and A3.3.1. Before final payment is completed the Framing and Drywall shall be inspected and accepted by the Architect and Manatee County Property Management.
23. 9.03 Carpet: Measurement and payment for this Bid Item shall include full compensation for all required work included to complete this portion of this project, rendering a complete and operable system. Provide and install all carpet as shown on the plans. Payment for all work included under this Bid Item shall represent full compensation in accordance with the unit price bid for the work required. All work covered for this Item is included on Sheets A3.2.1, A3.2.2, A3.3.1, A3.3.2, and A3.4.1 and related specification sections. Before final payment is completed the carpet shall be inspected and accepted by the Architect and Manatee County Property Management.
24. 9.04 Porcelain Floor Tile: Measurement and payment for this Bid Item shall include full compensation for all required work included to complete this portion of this project, rendering a complete and operable system. Provide and install all Porcelain Floor Tile as shown on the plans. Payment for all work included under this Bid Item shall represent full compensation in accordance with the unit price bid for the work required. All work covered for this Item is included on Sheets A3.2.1, A3.2.2, A3.3.1, A3.3.2, and A3.4.1 and related specification sections. Before final payment is completed the Porcelain Floor Tile shall be inspected and accepted by the Architect and Manatee County Property Management.
25. 9.05 Porcelain Tile Base: Measurement and payment for this Bid Item shall include full compensation for all required work included to complete this portion of this project, rendering a complete and operable system. Provide and install all Porcelain Tile Base as shown on the plans. Payment for all work included under this Bid Item shall represent full compensation in accordance with the unit price bid for the work required. All work covered for this Item is included on Sheets A3.2.1, A3.2.2, A3.3.1, A3.3.2, and A3.4.1 and related specification sections. Before final payment is completed the Porcelain Tile Base shall be inspected and accepted by the Architect and Manatee County Property Management.
26. 9.06 Vinyl Floor Tile: Measurement and payment for this Bid Item shall include full compensation for all required work included to complete this portion of this project, rendering a complete and operable system. Provide and install all Porcelain Floor Tile as shown on the plans. Payment for all work included under this Bid Item shall represent full compensation in accordance with the unit price bid for the work required. All work covered for this Item is included on Sheets A3.2.1, A3.2.2, A3.3.1, A3.3.2, and A3.4.1 and related specification sections. Before final payment is completed the Vinyl Floor Tile shall be inspected and accepted by the Architect and Manatee County Property Management.
27. 9.07 Vinyl Base: Measurement and payment for this Bid Item shall include full compensation for all required work included to complete this portion of this project, rendering a complete and operable system. Provide and install all Vinyl Base as shown on the plans. Payment for all work included under this Bid Item shall represent full compensation in accordance with the unit price bid for the work required. All work covered for this Item is included on Sheets A3.2.1, A3.2.2, A3.3.1, A3.3.2, and A3.4.1 and related specification sections. Before final payment is completed

- the Vinyl Base shall be inspected and accepted by the Architect and Manatee County Property Management.
28. 9.08 Sealed Concrete: Measurement and payment for this Bid Item shall include full compensation for all required work included to complete this portion of this project, rendering a complete and operable system. Provide concrete sealer as shown on the plans. Payment for all work included under this Bid Item shall represent full compensation in accordance with the unit price bid for the work required. All work covered for this Item is included on Sheets A3.2.1, A3.2.2, A3.3.1, A3.3.2, and A3.4.1 and related specification sections. Before final payment is completed the concrete sealer shall be inspected and accepted by the Architect and Manatee County Property Management.
29. 9.09 24" Wide Soffit: Measurement and payment for this Bid Item shall include full compensation for all required work included to complete this portion of this project, rendering a complete and operable system. Provide and install all 24" wide soffits as shown on the plans. Payment for all work included under this Bid Item shall represent full compensation in accordance with the unit price bid for the work required. All work covered for this Item is included on Sheets A3.2.1, A3.2.2, A3.3.1, A3.3.2, and A3.4.1 and related specification sections. Before final payment is completed the 24" wide soffits shall be inspected and accepted by the Architect and Manatee County Property Management.
30. 9.10 12" Wide Soffit: Measurement and payment for this Bid Item shall include full compensation for all required work included to complete this portion of this project, rendering a complete and operable system. Provide and install all 12" wide soffits as shown on the plans. Payment for all work included under this Bid Item shall represent full compensation in accordance with the unit price bid for the work required. All work covered for this Item is included on Sheets A3.2.1, A3.2.2, A3.3.1, A3.3.2, and A3.4.1 and related specification sections. Before final payment is completed the 12" wide soffits shall be inspected and accepted by the Architect and Manatee County Property Management.
31. 9.11 Gyp. Bd. Headers: Measurement and payment for this Bid Item shall include full compensation for all required work included to complete this portion of this project, rendering a complete and operable system. Provide and install all gyp. bd. headers as shown on the plans. Payment for all work included under this Bid Item shall represent full compensation in accordance with the unit price bid for the work required. All work covered for this Item is included on Sheets A3.2.1, A3.2.2, A3.3.1, A3.3.2, and A3.4.1 and related specification sections. Before final payment is completed the gyp. bd. headers shall be inspected and accepted by the Architect and Manatee County Property Management.
32. 9.12 Acoustical Ceilings and Grid: Measurement and payment for this Bid Item shall include full compensation for all required work included to complete this portion of this project, rendering a complete and operable system. Provide and install all acoustical ceilings, grid and tiles as shown on the plans. Payment for all work included under this Bid Item shall represent full compensation in accordance with the unit price bid for the work required. All work covered for this Item is included in Sheets A3.2.1, A3.2.2, A3.3.1, A3.3.2, and A3.4.1 and related specification sections. Before final payment is completed the Acoustical Ceilings shall be inspected and accepted by the Architect and Manatee County Property Management.
33. 9.13 Painted and Textured Gyp. Bd. Ceilings: Measurement and payment for this Bid Item shall include full compensation for all required work included to complete this portion of this project, rendering a complete and operable system. Provide and install all paints and coatings as shown on the plans. Payment for all work included under this Bid Item shall represent full compensation in accordance with the unit price bid for the work required. All work covered for this Item is included on Sheet A3.1. Before final payment is completed the painted areas and touch up paint shall be completed, inspected and accepted by the Architect and Manatee County Property Management.
34. 9.14 Open Structure: Measurement and payment for this Bid Item shall include full compensation for all required work included to complete this portion of this project, rendering a complete and operable system. Finish all open structure ceilings as shown on the plans. Payment for all work included under this Bid Item shall represent full compensation in accordance with the unit price bid for the work required. All work covered for this Item is included on Sheets A3.2.1, A3.2.2, A3.3.1, A3.3.2, and A3.4.1 and related specification sections. Before final payment is completed

the open structure ceiling areas and touch up paint shall be completed, inspected and accepted by the Architect and Manatee County Property Management.

35. 9.15 Interior Painting and Coatings: Measurement and payment for this Bid Item shall include full compensation for all required work included to complete this portion of this project, rendering a complete and operable system. Provide and install all interior painting and coatings as shown on the plans. Payment for all work included under this Bid Item shall represent full compensation in accordance with the lump sum bid for the work required. Contractor shall provide a breakdown of all scope and material for review along with the bid package, All work covered for this Item is included on Sheets A3.2.1, A3.2.2, A3.3.1, A3.3.2, and A3.4.1 and related specification sections. Before final payment is completed the interior painting and coatings as well as any touch up paint shall be completed, inspected and accepted by the Architect and Manatee County Property Management.
36. 9.16 Porcelain Wall Tile: Measurement and payment for this Bid Item shall include full compensation for all required work included to complete this portion of this project, rendering a complete and operable system. Provide and install all porcelain wall tile as shown on the plans. Payment for all work included under this Bid Item shall represent full compensation in accordance with the unit price bid for the work required. All work covered for this Item is included on Sheets A3.4.1, A9.1, A9.2 and A9.3 and related specification sections. Before final payment is completed the porcelain wall tile shall be completed, inspected and accepted by the Architect and Manatee County Property Management.
37. 9.17 Exterior Painting: Measurement and payment for this Bid Item shall include full compensation for all required work included to complete this portion of this project, rendering a complete and operable system. Provide and install all exterior paints and coatings as shown on the plans. Payment for all work included under this Bid Item shall represent full compensation in accordance with the lump sum bid for the work required. Contractor shall provide a breakdown of all scope and material for review along with the bid package, All work covered for this Item is included in the architectural plans and related specification sections. Before final payment is completed the painted areas and touch up paint shall be completed, inspected and accepted by the Architect and Manatee County Property Management.
38. 9.18 Exterior Finish Patch and Repair: Measurement and payment for this Bid Item shall include full compensation for all required work included to complete this portion of this project, rendering a complete and operable system. Provide and install all exterior patch and repair as required by the new construction. Payment for all work included under this Bid Item shall represent full compensation in accordance with the lump sum bid for the work required. Contractor shall provide a breakdown of all scope and material for review along with the bid package, All work covered for this Item is included in the construction plans and related specification sections. Before final payment is completed the painted areas and touch up paint shall be completed, inspected and accepted by the Architect and Manatee County Property Management.
39. 9.19 Stucco over new structure: Measurement and payment for this Bid Item shall include full compensation for all required work included to complete this portion of this project, rendering a complete and operable system. Provide and install all stucco over new structure as required by the new construction. Payment for all work included under this Bid Item shall represent full compensation in accordance with the lump sum bid for the work required. Contractor shall provide a breakdown of all scope and material for review along with the bid package, All work covered for this Item is included in the construction plans and related specification sections. Before final payment is completed the stucco shall be completed, inspected and accepted by the Architect and Manatee County Property Management.
40. 9.20 Exterior Foam Trim: Measurement and payment for this Bid Item shall include full compensation for all required work included to complete this portion of this project, rendering a complete and operable system. Provide and install all exterior foam trim as required by the new construction. Payment for all work included under this Bid Item shall represent full compensation in accordance with the unit price bid for the work required. All work covered for this Item is included on Sheets A5.1, A8.2 and related specification sections. Before final payment is completed the exterior foam trim shall be completed, inspected and accepted by the Architect and Manatee County Property Management.

41. 10.01 Fire Extinguisher in Cabinet: Measurement and payment for this Bid Item shall include full compensation for all required work included to complete this portion of this project, rendering a complete and operable system. Provide and install all cabinet mounted fire extinguishers as shown on the plans. Payment for all work included under this Bid Item shall represent full compensation in accordance with the lump sum price bid for the work required. All work covered for this Item is included on Sheets A2.0 and related specification sections. Before final payment is completed the cabinets and extinguishers shall be inspected and accepted by the Architect, Manatee County Property Management, and the Cedar Hammock Fire Marshall.
42. 10.02 Toilet Partitions: Measurement and payment for this Bid Item shall include full compensation for all required work included to complete this portion of this project, rendering a complete and operable system. Provide and install all toilet partitions as shown on the plans. Payment for all work included under this Bid Item shall represent full compensation in accordance with the lump sum bid for the work required. Contractor shall provide a breakdown of all scope and material for review along with the bid package. All work covered for this Item is included on sheets A3.2.1, A3.3.1, A9.1 and A9.2. Before final payment is completed the toilet partitions shall be inspected and accepted by the Architect and Manatee County Property Management.
43. 10.03 Toilet Accessories: Measurement and payment for this Bid Item shall include full compensation for all required work included to complete this portion of this project, rendering a complete and operable system. Provide and install all toilet accessories as shown on the plans. Payment for all work included under this Bid Item shall represent full compensation in accordance with the lump sum bid for the work required. Contractor shall provide a breakdown of all scope and material for review along with the bid package. All work covered for this Item is included on sheets A3.2.1, A3.3.1, A9.1 and A9.2. Before final payment is completed the toilet accessories shall be inspected and accepted by the Architect and Manatee County Property Management.
44. 10.04 ADA Signage: Measurement and payment for this Bid Item shall include full compensation for all required work included to complete this portion of this project, rendering a complete and operable system. Provide and install all code required ADA signage as shown on the plans. Payment for all work included under this Bid Item shall represent full compensation in accordance with the lump sum bid for the work required. Contractor shall provide a breakdown of all scope and material for review along with the bid package. All work covered for this Item is per Florida Building Code requirements. Before final payment is completed the signage shall be inspected and accepted by the Architect and Manatee County Property Management.
45. 10.05 Specialty Signage: Measurement and payment for this Bid Item shall include full compensation for all required work included to complete this portion of this project, rendering a complete and operable system. Provide and install all specialty signage as shown on the plans. Payment for all work included under this Bid Item shall represent full compensation in accordance with the lump sum bid for the work required. Contractor shall provide a breakdown of all scope and material for review along with the bid package. All work covered for this Item is included on Sheet A9.3. Before final payment is completed the signage shall be inspected and accepted by the Architect and Manatee County Property Management.
46. 10.06 Roller Shades: Measurement and payment for this Bid Item shall include full compensation for all required work included to complete this portion of this project, rendering a complete and operable system. Provide and install all roller shades per addendum #2. Payment for all work included under this Bid Item shall represent full compensation in accordance with the lump sum bid for the work required. Contractor shall provide a breakdown of all scope and material for review along with the bid package. All work covered for this Item is included in Addendum #2. Before final payment is completed the signage shall be inspected and accepted by the Architect and Manatee County Property Management.
47. 15.01 Fire Sprinkler System Renovation: Measurement and payment for this Bid Item shall include full compensation for all required work included to complete this portion of this project, rendering a complete and operable system. Renovate the existing wet pipe sprinkler system as shown on the plans. Payment for all work included under this Bid Item shall represent full compensation in accordance with the lump sum price bid for the work required. All work covered for this Item is included on the Fire Protection Sheets. Contractor to provide a separate schedule of values for the individual components of this system along with their payment requests. Before

final payment is completed the sprinkler system shall be inspected and accepted by the Architect, Manatee County Property Management, and the Cedar Hammock Fire Marshall.

48. 15.02 HVAC - New Ducting: Measurement and payment for this Bid Item shall include full compensation for all required work included to complete this portion of this project, rendering a complete and operable system. Provide and install the ducting as shown on the plans. Payment for all work included under this Bid Item shall represent full compensation in accordance with the unit price bid for the work required. All work covered for this Item is included on the Mechanical and Electrical Sheets. Contractor to provide a separate schedule of values for the individual components of this system along with their payment requests. Before final payment is completed the HVAC New ducting shall be inspected and accepted by the Architect and Manatee County Property Management.
49. 15.03 Plumbing: Measurement and payment for this Bid Item shall include full compensation for all required work included to complete this portion of this project, rendering a complete and operable system. Provide and install plumbing fixtures, piping, and fittings as shown on the plans. Payment for all work included under this Bid Item shall represent full compensation in accordance with the lump sum price bid for the work required. All work covered for this Item is included on the Plumbing Sheets. Contractor to provide a separate schedule of values for the individual components of this system along with their payment requests. Before final payment is completed all plumbing shall be inspected and accepted by the Architect and Manatee County Property Management.
50. 16.01 Electrical - Wiring: Measurement and payment for this Bid Item shall include full compensation for all required work included to complete this portion of this project, rendering a complete and operable system. Provide and install the electrical wiring, pathways, and conduits as shown on the plans. Payment for all work included under this Bid Item shall represent full compensation in accordance with the lump sum price bid for the work required. All work covered for this Item is included on the Electrical Sheets. Contractor to provide a separate schedule of values for the individual components of this system along with their payment requests. Before final payment is completed the electrical wiring, pathways and conduits shall be inspected and accepted by the Architect and Manatee County Property Management.
51. 16.02 Electrical - Lighting: Measurement and payment for this Bid Item shall include full compensation for all required work included to complete this portion of this project, rendering a complete and operable system. Provide and install the data wiring, pathways, conduits and trim as shown on the plans. Payment for all work included under this Bid Item shall represent full compensation in accordance with the lump sum price bid for the work required. All work covered for this Item is included on the Electrical Sheets. Contractor to provide a separate schedule of values for the individual components of this system along with their payment requests. Before final payment is completed the lighting (both new and reused existing fixtures) shall be inspected and accepted by the Architect and Manatee County Property Management.
52. 16.03 Electrical - Switchgear: Measurement and payment for this Bid Item shall include full compensation for all required work included to complete this portion of this project, rendering a complete and operable system. Provide and install the electrical switchgear and related components as shown on the plans. Payment for all work included under this Bid Item shall represent full compensation in accordance with the lump sum price bid for the work required. All work covered for this Item is included on the Electrical Sheets. Contractor to provide a separate schedule of values for the individual components of this system along with their payment requests. Before final payment is completed the switchgear and related components shall be inspected and accepted by the Architect and Manatee County Property Management.
53. 16.05 Electrical – Low Voltage (wiring, pathways, trim): Measurement and payment for this Bid Item shall include full compensation for all required work included to complete this portion of this project, rendering a complete and operable system. Provide and install the low voltage, wiring, pathways and trim as shown on the plans. Payment for all work included under this Bid Item shall represent full compensation in accordance with the lump sum price bid for the work required. All work covered for this Item is included on the Electrical Sheets. Contractor to provide a separate schedule of values for the individual components of this system along with their payment requests. Before final payment is completed the low voltage, pathways and trim shall be inspected and accepted by the Architect and Manatee County Property Management.

54. 16.06 Electrical – Fire Alarm: Measurement and payment for this Bid Item shall include full compensation for all required work included to complete this portion of this project, rendering a complete and operable system. Provide and install the fire alarm as shown on the plans. Payment for all work included under this Bid Item shall represent full compensation in accordance with the lump sum price bid for the work required. All work covered for this Item is included on the Fire Protection Sheets. Contractor to provide a separate schedule of values for the individual components of this system along with their payment requests. Before final payment is completed the fire alarm shall be inspected and accepted by the Architect, Manatee County Property Management, and the Cedar Hammock Fire Marshall.
55. 16.07 Electrical - Data: Measurement and payment for this Bid Item shall include full compensation for all required work included to complete this portion of this project, rendering a complete and operable system. Provide and install the data wiring, pathways, conduits and trim as shown on the plans. Payment for all work included under this Bid Item shall represent full compensation in accordance with the lump sum price bid for the work required. All work covered for this Item is included on the Electrical Sheets. Contractor to provide a separate schedule of values for the individual components of this system along with their payment requests. Before final payment is completed the data wiring, pathways, conduits and trim shall be inspected and accepted by the Architect and Manatee County Property Management.

END OF SECTION 012000

THIS PAGE LEFT INTENTIONALLY BLANK

BID FORM
(Submit in triplicate)

For: IFB #15-0382DC SOE Phases 2 and 3 Interior Renovation Project

Total Offer (Bid "A"): _____
Based on a completion time of 120 calendar days
Total Offer (Bid "B"): _____
Based on a completion time of 160 calendar days

We, the undersigned, hereby declare that we have carefully reviewed the IFB Documents in their entirety and with full knowledge and understanding of the aforementioned herewith submit this bid, completely meeting each and every specification, term, and condition contained therein.

Two schedules for completion of the Work shall be considered. Each bid for completion by the specified stated time shall be offered as a separate "total offer". County has the sole authority to select the bid based on the completion time which is in the best interest of County. Only one award shall be made.

As bidder, we understand that the IFB documents, in its entirety, including but not limited to, all specifications, terms, and conditions shall be made a part of any resulting Agreement between Manatee County and the successful bidder. Failure to comply shall result in Agreement default, whereupon, the defaulting successful bidder shall be required to pay for any and all re-procurement costs, damages, and attorney fees as incurred by County, and agrees to forfeit his/her bid bond.

Communications concerning this bid shall be addressed as follows: **(Complete all fields)**

Bidder's Name: _____

Mailing Address: _____

Telephone: () _____ Fax: () _____

Email Address: _____

I, _____ on [date(s)] _____ attest that I have visited the project site(s) to familiarize myself with the full scope of work required for the bid.

Acknowledge Addendum No. _____ Dated: _____ Acknowledge Addendum No. _____ Dated: _____

Acknowledge Addendum No. _____ Dated: _____ Acknowledge Addendum No. _____ Dated: _____

Acknowledge Addendum No. _____ Dated: _____ Acknowledge Addendum No. _____ Dated: _____

Authorized Signature(s): _____

Name and Title of Above Signer(s): _____

Date: _____

MAILING LABEL

Cut along the outside border and affix this label to your sealed bid envelope to identify it as a "Sealed Bid". Be sure to include the name of the company submitting the bid and the bid due date and time where requested.

MAILING LABEL TO AFFIX TO OUTSIDE OF SEALED BID PACKAGE:

SEALED BID - DO NOT OPEN**BIDDER:** _____**SEALED BID NO: IFB #****BID TITLE: IFB TITLE****DUE DATE/TIME:** _____ @ _____

BID FORM
(Submitted in triplicate)

BID "A" 120 CALENDAR DAYS COMPLETION
IFB #15-0382DC SOE PHASES 2 AND 3 INTERIOR RENOVATION PROJECT

ITEM	DESCRIPTION	EST QTY	U/M	UNIT PRICE	EXTENDED PRICE
Division 1 - General Requirements					
1.01	Mobilization	1	LS		
1.02	Demolition	1	LS		
Division 1 - Totals					\$ -
Division 2 - Site					
2.01	Existing Asphalt Repair	1	LS		
Division 2 - Totals					\$ -
Division 3 - Concrete					
3.01	Exterior Openings - Windows	4	EA		\$ -
3.02	Exterior Openings - Man Doors	1	EA		\$ -
3.03	Exterior Openings - Truck Doors	3	EA		
3.04	Existing Slab Repair	1	LS		
3.04	Interior Masonry Openings	1	LS		
Division 3 Totals					\$ -
Division 5 - Site					
5.01	Interior Metal Framing	1	LS		
5.02	Miscellaneous Structural Steel	1	LS		
Division 2 - Totals					\$ -
Division 6 - Woods and Plastics					
6.01	Reception Desk	1	LS		
6.02	Cabinetry - Base Cabinets	153	LF		\$ -
6.03	Cabinetry - Upper Cabinets	140	LF		\$ -
6.04	Countertops - 24" P Lam	176	LF		\$ -
Division 6 Totals					\$ -

BIDDER: _____
 AUTHORIZED BY: _____

BID FORM

(Submitted in triplicate)

BID "A" 120 CALENDAR DAYS COMPLETION**IFB #15-0382DC SOE PHASES 2 AND 3 INTERIOR RENOVATION PROJECT**

Division 8 - Doors & Windows					
8.01	Overhead Coiling Doors	3	EA		\$ -
8.02	Wood Doors, Frames, and Hardware	23	leaf		\$ -
8.03	H.M. Doors, Frames, and Hardware	6	leaf		\$ -
8.04	Interior Glazing (Doors)	64	SF		\$ -
8.05	Exterior Storefront	4	EA		\$ -
8.06	Access Control	1	LS		
Division 8 Totals					\$ -
Division 9 - Finishes					
9.01	Gypsum Assemblies	1	LS		
9.02	Drywall and Framing - Patch and Texture	1	LS		
9.03	Carpet	956	YD		\$ -
9.04	Porcelain Floor Tile	1,178	SF		\$ -
9.05	Porcelain Tile Base	838	LF		\$ -
9.06	Vinyl Floor Tile	995	SF		\$ -
9.07	Vinyl Base	1,585	LF		\$ -
9.08	Sealed Concrete	4,768	SF		\$ -
9.09	24" Wide Soffit	15	LF		\$ -
9.10	12" Wide Gyp. Bd. Soffit	68	LF		\$ -
9.11	Gyp. Bd. Header	33	LF		\$ -
9.12	Acoustical Ceiling and Grid	8,918	SF		\$ -
9.13	Painted and Textured Gyp. Bd. Ceilings	918	SF		\$ -
9.14	Open Structure	5,402	SF		\$ -
9.15	Interior Paintings & Coatings	1	LS		
9.16	Porcelain Wall Tile	2,479	SF		\$ -
9.17	Exterior Painting	1	LS		
9.18	Exterior Finish Patch and Repair	1	LS		
9.19	Stucco over new exterior structure	1	LS		
9.20	Exterior Foam Trim	58	LF		\$ -
Division 9 Totals					\$ -

BIDDER: _____
 AUTHORIZED BY: _____

BID FORM
(Submitted in triplicate)

BID "A" 120 CALENDAR DAYS COMPLETION
IFB #15-0382DC SOE PHASES 2 AND 3 INTERIOR RENOVATION PROJECT

Division 10 - Specialties					
10.01	Fire Extinguisher in Cabinet	6	EA		\$ -
10.02	Toilet Partitions	1	LS		
10.03	Toilet Accessories	1	LS		
10.04	ADA Signage (Code Required)	1	LS		
10.05	Specialty Signage	1	LS		
10.06	Roller Shades	1	LS		
Division 10 Totals					\$ -
Division 15 - Mechanical					
15.01	Fire Sprinkler System Renovation	1	LS		
15.02	HVAC - Ducting	1	LS		
15.03	Plumbing	1	LS		
Division 15 Totals					\$ -
Division 16 - Electrical					
16.01	Electrical - Wiring	1	LS		
16.02	Electrical - Lighting	1	LS		
16.03	Electrical - Switchgear	1	LS		
16.05	Electrical - Low Voltage (wiring, pathways, trim)	1	LS		
16.06	Electrical - Fire Alarm	1	LS		
16.07	Electrical - Data	1	LS		
Division 16 Totals					\$ -

TOTAL CONSTRUCTION COST (Above Divisions Totals)	\$ -
Contract Contingency Work (used ONLY with County Approval)	10% of Base Bid
	\$ -

TOTAL BID "A" (120 Calendar Days)	\$ -
--	-------------

Alternate #1 - Add Truck Dock Canopy	
---	--

BIDDER: _____
 AUTHORIZED BY: _____

BID FORM

(Submitted in triplicate)

BID "B" 160 CALENDAR DAYS COMPLETION
IFB #15-0382DC SOE PHASES 2 AND 3 INTERIOR RENOVATION PROJECT

ITEM	DESCRIPTION	EST QTY	U/M	UNIT PRICE	EXTENDED PRICE
Division 1 - General Requirements					
1.01	Mobilization	1	LS		
1.02	Demolition	1	LS		
Division 1 - Totals					\$ -
Division 2 - Site					
2.01	Existing Asphalt Repair	1	LS		
Division 2 - Totals					\$ -
Division 3 - Concrete					
3.01	Exterior Openings - Windows	4	EA		\$ -
3.02	Exterior Openings - Man Doors	1	EA		\$ -
3.03	Exterior Openings - Truck Doors	3	EA		
3.04	Existing Slab Repair	1	LS		
3.04	Interior Masonry Openings	1	LS		
Division 3 Totals					\$ -
Division 5 - Site					
5.01	Interior Metal Framing	1	LS		
5.02	Miscellaneous Structural Steel	1	LS		
Division 2 - Totals					\$ -
Division 6 - Woods and Plastics					
6.01	Reception Desk	1	LS		
6.02	Cabinetry - Base Cabinets	153	LF		\$ -
6.03	Cabinetry - Upper Cabinets	140	LF		\$ -
6.04	Countertops - 24" P Lam	176	LF		\$ -
Division 6 Totals					-

BIDDER: _____
 AUTHORIZED BY: _____

BID FORM
(Submitted in triplicate)

BID "B" 160 CALENDAR DAYS COMPLETION
IFB #15-0382DC SOE PHASES 2 AND 3 INTERIOR RENOVATION PROJECT

Division 8 - Doors & Windows					
8.01	Overhead Coiling Doors	3	EA		\$ -
8.02	Wood Doors, Frames, and Hardware	23	leaf		\$ -
8.03	H.M. Doors, Frames, and Hardware	6	leaf		\$ -
8.04	Interior Glazing (Doors)	64	SF		\$ -
8.05	Exterior Storefront	4	EA		\$ -
8.06	Access Control	1	LS		
Division 8 Totals					\$ -
Division 9 - Finishes					
9.01	Gypsum Assemblies	1	LS		
9.02	Drywall and Framing - Patch and Texture	1	LS		
9.03	Carpet	956	YD		\$ -
9.04	Porcelain Floor Tile	1,178	SF		\$ -
9.05	Porcelain Tile Base	838	LF		\$ -
9.06	Vinyl Floor Tile	995	SF		\$ -
9.07	Vinyl Base	1,585	LF		\$ -
9.08	Sealed Concrete	4,768	SF		\$ -
9.09	24" Wide Soffit	15	LF		\$ -
9.10	12" Wide Gyp. Bd. Soffit	68	LF		\$ -
9.11	Gyp. Bd. Header	33	LF		\$ -
9.12	Acoustical Ceiling and Grid	8,918	SF		\$ -
9.13	Painted and Textured Gyp. Bd. Ceilings	918	SF		\$ -
9.14	Open Structure	5,402	SF		\$ -
9.15	Interior Paintings & Coatings	1	LS		
9.16	Porcelain Wall Tile	2,479	SF		\$ -
9.17	Exterior Painting	1	LS		
9.18	Exterior Finish Patch and Repair	1	LS		
9.19	Stucco over new exterior structure	1	LS		
9.20	Exterior Foam Trim	58	LF		\$ -
Division 9 Totals					\$ -

BIDDER: _____
 AUTHORIZED BY: _____

BID FORM

(Submitted in triplicate)

BID "B" 160 CALENDAR DAYS COMPLETION**IFB #15-0382DC SOE PHASES 2 AND 3 INTERIOR RENOVATION PROJECT**

Division 10 - Specialties					
10.01	Fire Extinguisher in Cabinet	6	EA		\$ -
10.02	Toilet Partitions	1	LS		
10.03	Toilet Accessories	1	LS		
10.04	ADA Signage (Code Required)	1	LS		
10.05	Specialty Signage	1	LS		
10.06	Roller Shades	1	LS		
Division 10 Totals					\$ -
Division 15 - Mechanical					
15.01	Fire Sprinkler System Renovation	1	LS		
15.02	HVAC - Ducting	1	LS		
15.03	Plumbing	1	LS		
Division 15 Totals					\$ -
Division 16 - Electrical					
16.01	Electrical - Wiring	1	LS		
16.02	Electrical - Lighting	1	LS		
16.03	Electrical - Switchgear	1	LS		
16.05	Electrical - Low Voltage (wiring, pathways, trim)	1	LS		
16.06	Electrical - Fire Alarm	1	LS		
16.07	Electrical - Data	1	LS		
Division 16 Totals					\$ -

TOTAL CONSTRUCTION COST (Above Divisions Totals)	\$ -
Contract Contingency Work (used ONLY with County Approval)	10% of Base Bid
	\$ -

TOTAL BID "B" (160 Calendar Days)	\$ -
--	-------------

Alternate #1 - Add Truck Dock Canopy	
---	--

BIDDER: _____
 AUTHORIZED BY: _____

INFORMATION CONFERENCE: INVITATION FOR BID
IFB #0382DC SOE Phases 2 and 3 Interior Renovation Project

DATE: February 6, 2015 TIME: 9:30 A.M.

TELEPHONE and EMAIL	NAME (PLEASE PRINT)	COMPANY NAME
P-941.749.3074 deborah.carey-reed@mymanatee.org	DEBORAH CAREY-REED	MC PURCHASING
813-498-2337 ben@vantageconstructiongroup.com	Ben Williams	Vantage Construction Group
941-803-8123 MScherette@PowerContractingLLC.com	MIKE Scherette	Power CONTR.
941-445-4045 JesseRichardsLLC@yahoo.com	Jesse Richards	J.E. Charlottes
813-449-6211 JimEbanks@BatesElectric.com	Jim Ebanks	Bates Electric
941 735 2732 MARK U @ MANASOTA CONSTRUCTION. com	MARK UNGER	MANASOTA COMM'L. CONSTRUCTION
749-3003 941-951-6100 loigh@jonfswiftinc.com	TOM YARGER	MC PROP MGMT.
813-310-7342 MACK@mackbuildingco.com	LEIGH HARRIS MACK HARPER	JON F. SWIFT, INC. Mack Building Co.
941-351-5560 x107 crikey@magnumbuilders.com	Clint Riley	Magnum Builders
941-742-5844 angelaberts@mymanatee.org	ANGELA BERTS	MC. PROP. MGMT
941-758-2551 Phil@global-sanchez.com	Phil Feinberg	Global Sanchez, Inc.

MEETING SIGN-IN SHEET

Project Name: Supervisor of Elections - Phases 2 & 3

Subject: #2 Site Walk-through

Date, Time & Location: February 12th, 2015 @ 1:00pm @ SOE Site

NAME	COMPANY	PHONE/FAX NUMBERS/E-MAIL
Angela Honts	Property Management Construction Services Div.	941-742-5844 angela.honts@mymanatee.org
LEIGH HARRIS	JON F. SWIFT, INC	941-951-6100 LEIGH@JONFSWIFTINC.COM
JOHN HEARN	R.E CRAWFORD	941-907-0010 JHEARN@RE CRAWFORD.COM
MIKE Scherette	Power Contracting	mscherette@Power Contracting LLC, Com
Shaefer White	LaSalle Plumbing	924-8428 Shaefer@LaSallePlumbing.com
TAYA & Tony Parodo	JP services	941-320-0995 JPS of SARASOTA @verizon.net
MARK UNGER	MANASTA Comm'l. Constn.	941 795 2732 MARKU@MANASTA CONSTRUCTION.COM
MAC K HARPER	Mack Building Co.	813-310-7342 mack@mackbuildingco.com
Matt GOAR	RAYCO Electric Inc	941-747-1965 mattg@raycoelectricinc.com
J.B. Taylor		

Page ____ of ____