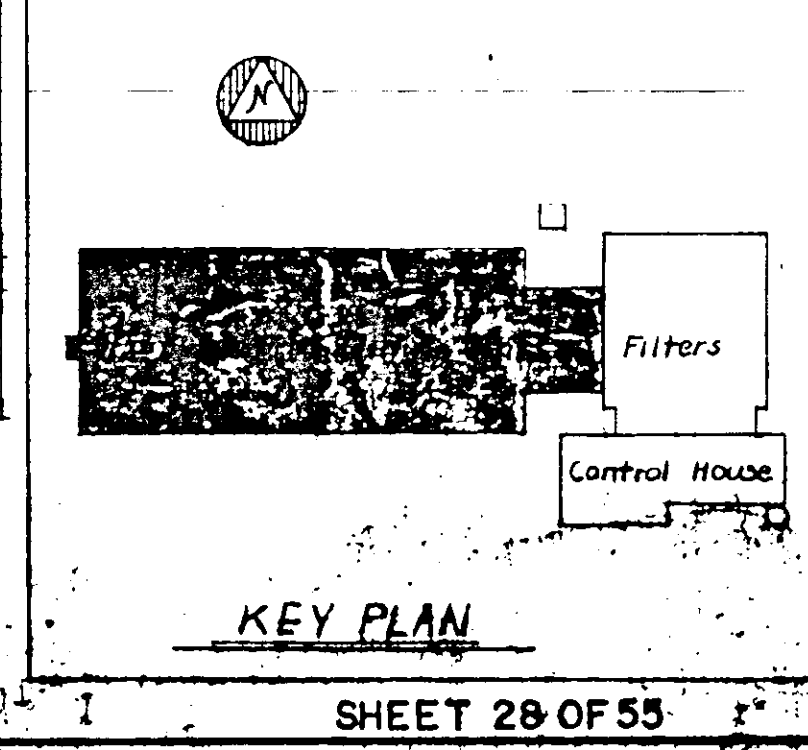


NOTE:
 Tank Layout & All Dimensions Are Symmetrical At &
 Except For Piping.
 All Handrails Shall Be 1 1/2" Dia. Galv. Iron Pipe.
 All Gratings Shall Be Gary GAL125 (Minum)

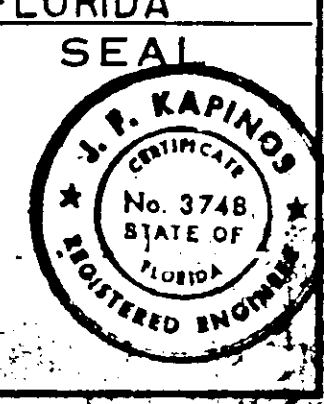
FLOCCULATION & SETTLING TANKS - PLAN
 SCALE: 1/4" = 1'-0"

SECTION NUMBER	SECTION CUT
7/9	

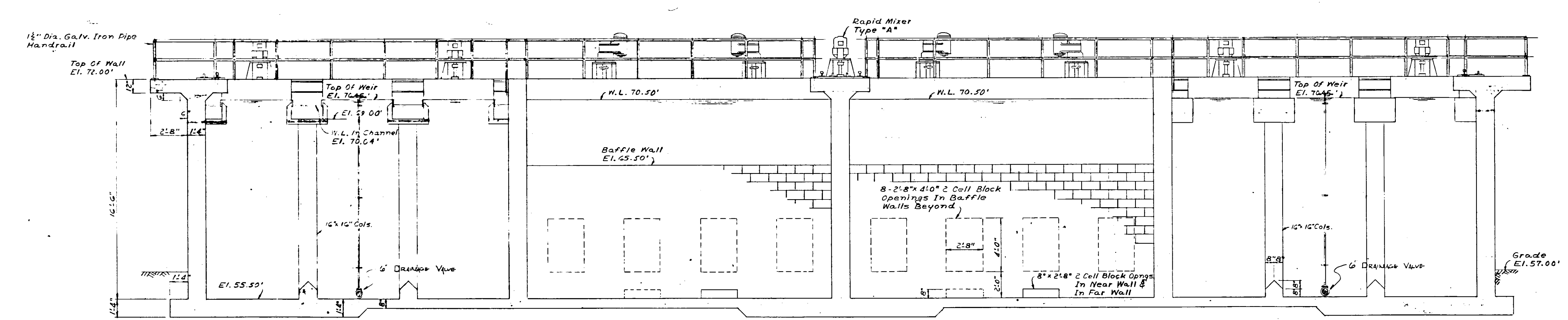
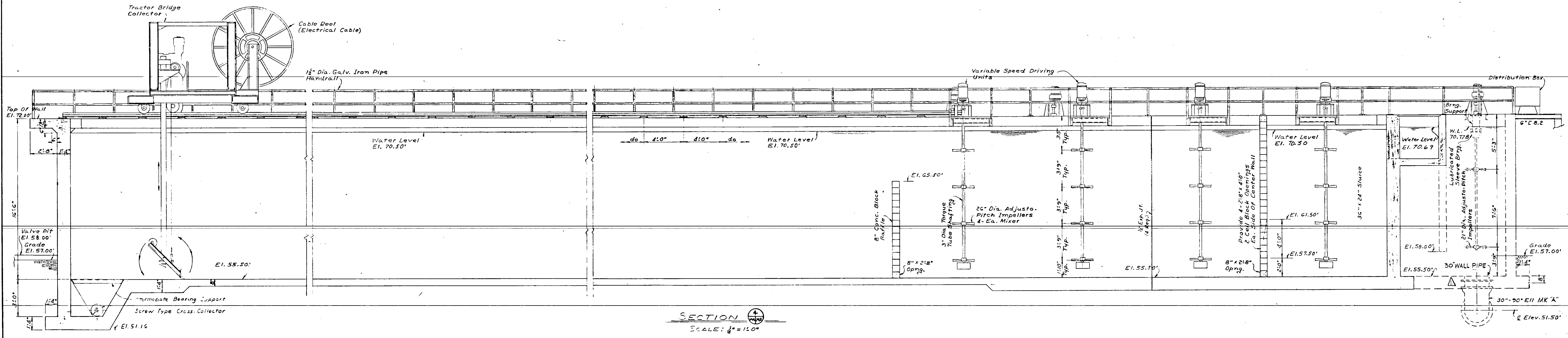
NOTE:
 DETAILS SUBJECT TO CHANGE TO MEET MANUFACTURER'S SPECIFICATIONS OF EQUIPMENT SELECTED.



RUSSELL & AXON · INC. · CONSULTING ENGINEERS DAYTONA BEACH, FLA. ST. LOUIS, MO.	
WATER WORKS PROJECT WATER TREATMENT PLANT PART B FLOCCULATION & SETTLING TANK PLAN - MECHANICAL MANATEE COUNTY FLORIDA	
DESIGNED BY JFH	FILE NO. 6353-3-M-4-III-B
DRAWN BY D.V.	SHEET NO. 14-B
CHECKED BY CEB	OF 15 SHEETS
DATE FEB 1965	SCALE: AS SHOWN

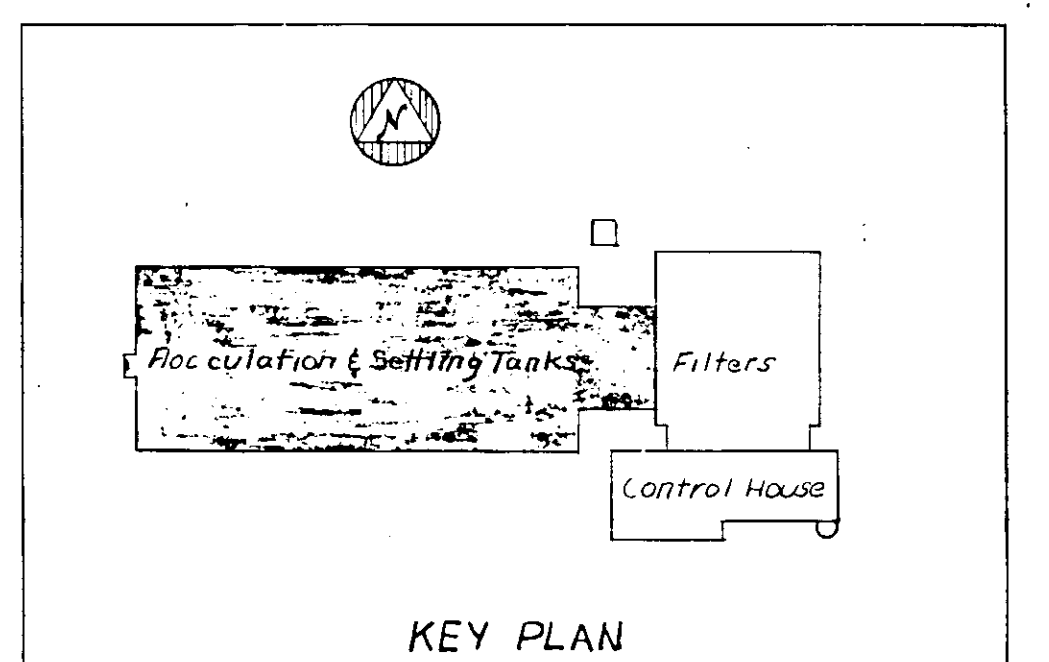
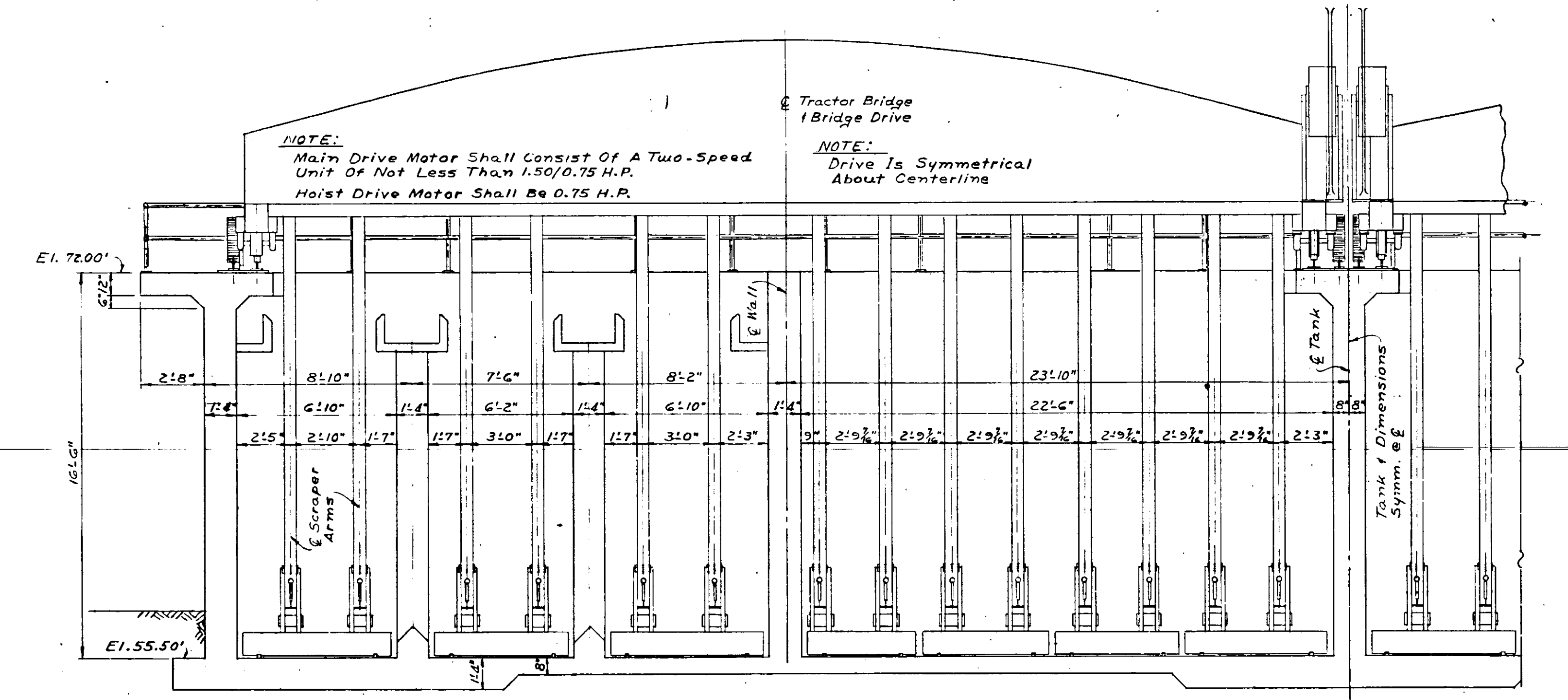
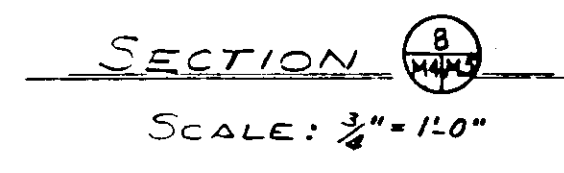
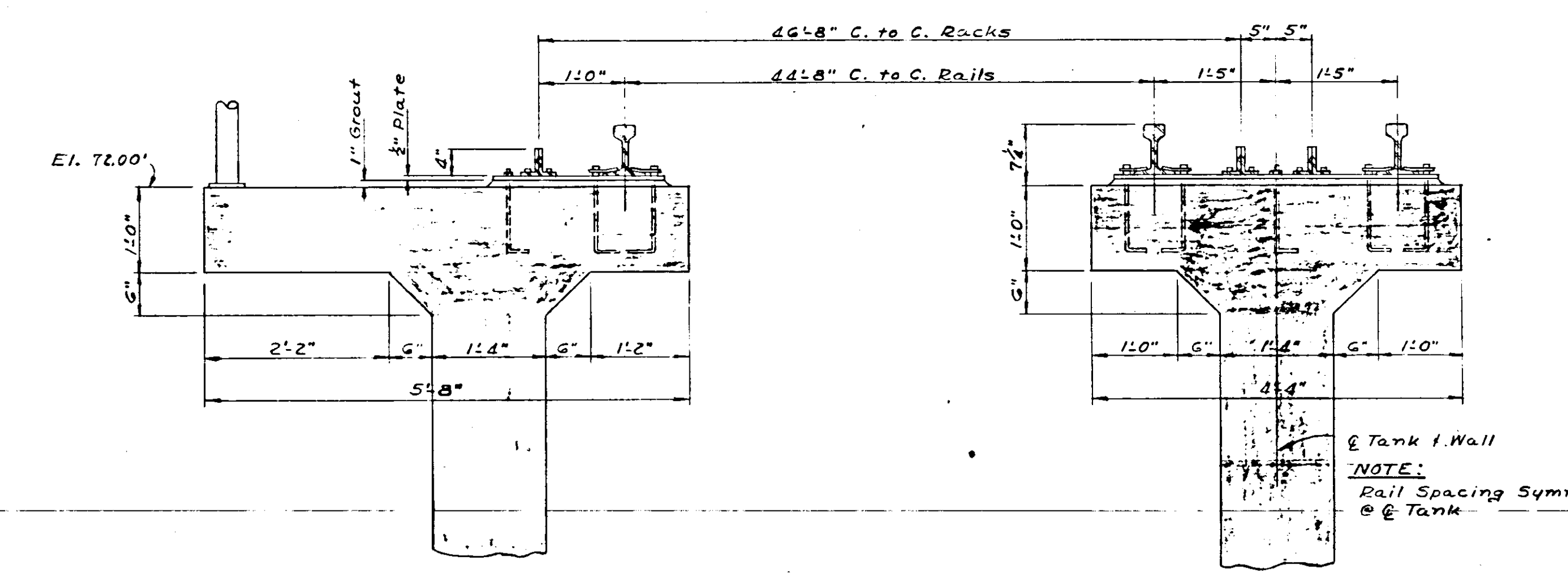


Reference to Continuation Drawing No. M-7



SECTION NO.	8	SECTION NUMBER	719
SHEET NO.		SHEET NO.	
SECTION CUT		SECTION DETAILED	

NOTE:
DETAILS SUBJECT TO CHANGE TO MEET MANUFACTURER'S SPECIFICATIONS OF EQUIPMENT SELECTED.



NO.	DATE	DESCRIPTION	BY	CHKD.
1	MAY 65	ADD 30" WALL PIPE	DME	
2	MAY 67	AS BUILT	FJL	

RUSSELL & AXON • INC. •
CONSULTING ENGINEERS
DAYTONA BEACH, FLA. ST. LOUIS, MO.

WATER WORKS PROJECT
WATER TREATMENT PLANT
PART B
FLOCCULATION & SETTLING TANKS SECTIONS—MECHANICAL
MANATEE COUNTY, FLORIDA

DESIGNED BY: JFH
DRAWN BY: D.V.
CHECKED BY: CEB/GR
DATE: Feb 1965

FILE NO.: 6353-3-M-5-III-B
SHEET NO. 15 OF 15
SCALE: AS SHOWN

SEAL
T. R. KAPINCO
No. 3748
STATE OF FLORIDA
REGISTERED ENGINEER