

CONTRACT PLANS COMPONENTS
LANDSCAPE PLANS

INDEX OF LANDSCAPE PLANS

SHEET NO.	SHEET DESCRIPTION
1	KEY SHEET
2	GENERAL AND PAY ITEM NOTES
3	PLANT SCHEDULE
4	LANDSCAPE PLANS

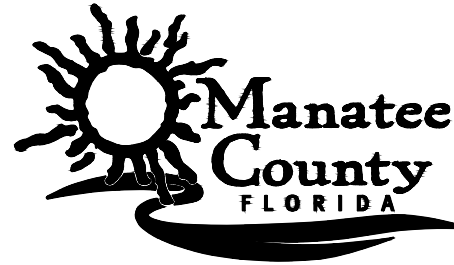
CONSTRUCTION PLANS

FOR

LENA ROAD

FROM NORTH OF 44TH AVENUE EAST TO SR 64
MANATEE COUNTY, FLORIDA

MANATEE COUNTY PROJECT # 6107560



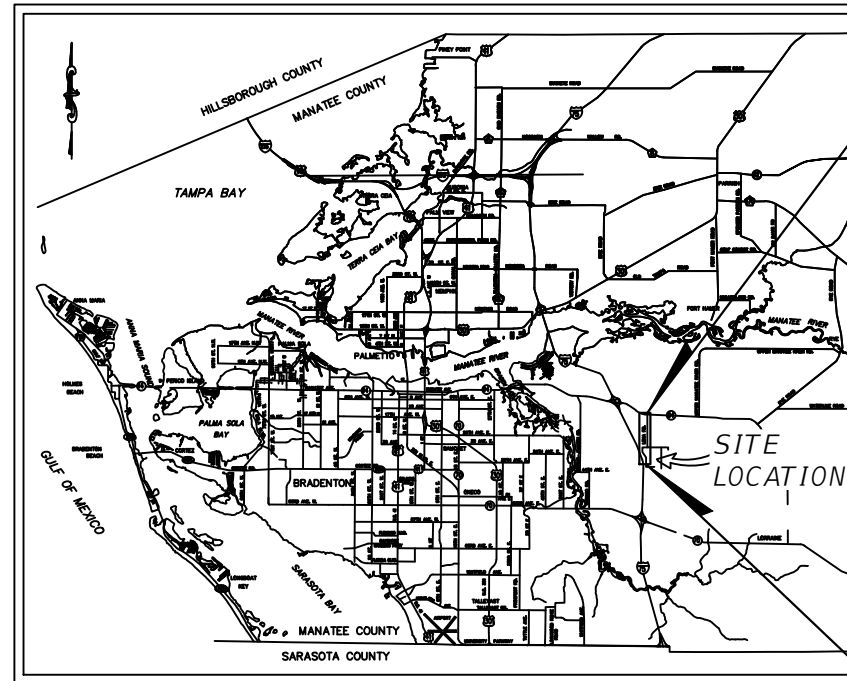
PROJECT TEAM:

OWNER:
MANATEE COUNTY
1022 26TH AVE. E.
BRADENTON, FL 34206
CONTACT: TONY RUSSO, P.E.
(941) 708-7450 ext. 7349

SURVEYOR:
HYATT SURVEYING SERVICES INC.
2012 LENA ROAD
BRADENTON, FL 34211
CONTACT: JOHN MATTHEWS
(941) 748-4693

ENGINEER:
KIMLEY-HORN AND ASSOCIATES, INC.
201 NORTH FRANKLIN STREET, SUITE 1400
TAMPA, FL 33602
CONTACT: SHARI K. BARNWELL, P.E.
(813) 620-1460

LANDSCAPE ARCHITECT:
KIMLEY-HORN AND ASSOCIATES, INC.
1777 MAIN STREET SUITE 200
SARASOTA FL 34234
CONTACT: JAMES R. PANKONIN, P.L.A.
(941) 379-7600



PROJECT VICINITY MAP
N.T.S.

END PROJECT
Q CONST. LENA ROAD
STA. 301+00.00

BEGIN PROJECT
Q CONST. LENA ROAD
STA. 304+00.00

LANDSCAPE PLANS
PROFESSIONAL OF RECORD:

JAMES R. PANKONIN, P.L.A.
P.L.A. NO.:6666900
KIMLEY-HORN AND ASSOCIATES, INC.
1777 MAIN STREET, SUITE 200
SARASOTA, FLORIDA, 34236

90% PLANS
AUGUST 2023
PREPARED BY



© 2023 KIMLEY-HORN AND ASSOCIATES, INC.
201 NORTH FRANKLIN ST., SUITE 1400
TAMPA, FL 33602
PHONE (813) 620-1460
WWW.KIMLEY-HORN.COM

NO.	REVISIONS	DATE	BY

THIS DOCUMENT IS PROTECTED BY SECTION 106 OF THE "UNITED STATES COPYRIGHT ACT". REPRODUCTION OR ALTERATION OF THIS DOCUMENT OR THE INFORMATION CONTAINED HEREON BY ANY MEANS WHATSOEVER IS STRICTLY PROHIBITED WITHOUT THE PRIOR WRITTEN CONSENT OF KIMLEY-HORN AND ASSOCIATES, INC. CONSENT IS HEREBY GRANTED SPECIFICALLY TO GOVERNMENTAL AGENCIES TO REPRODUCE THIS DOCUMENT IN COMPLIANCE WITH F.S. CHAPTER 119.

EDWARD M. DEAN, P.L.A.
FLORIDA LICENSE NUMBER:
6667269
DATE: 06/08/2023

DATE JUNE 2023
CIP NO. 6107560
SHEET NUMBER 1

THE OFFICIAL RECORD OF THIS SHEET IS THE ELECTRONIC FILE DIGITALLY SIGNED AND SEALED UNDER RULE 61G10-11.011, F.A.C.

GENERAL NOTES

- BENCHMARK ELEVATIONS SHOWN ON THE PLANS ARE NORTH AMERICAN VERTICAL DATUM OF 1929 (NAVD 29).
- THE LOCATION(S) OF THE UTILITIES SHOWN IN THE PLANS (INCLUDING THOSE DESIGNATED Vv, Vh, AND Vvh) ARE BASED ON LIMITED INVESTIGATION TECHNIQUES AND SHOULD BE CONSIDERED APPROXIMATE ONLY. THE VERIFIED LOCATIONS/ELEVATIONS APPLY ONLY AT THE POINTS SHOWN. INTERPOLATIONS BETWEEN THESE POINTS HAVE NOT BEEN VERIFIED.
- ALL MULCH SHALL BE RECYCLED MELALEUCA MULCH.

ABBREVIATIONS

CAL CALIPER
 FG FIELD GROWN
 HCZ HORIZONTAL CLEAR ZONE
 NWL NORMAL WATER LEVEL
 SMF STORMWATER MANAGEMENT FACILITY
 SPRD SPREAD
 VMZ VEGETATION MANAGEMENT ZONE
 PPP PLANTS PER POT

STANDARD LANDSCAPE SETBACKS						
TYPE	DRAINAGE STRUCTURES AND PIPE	LIGHT POLES	UNDERGROUND UTILITIES	ITS POLES	OVERHEAD UTILITIES	BOTTOM OF SWALE
TREE	15' - 0"	25' - 0"	10' - 0"	30' - 0"	25' - 0"	8' - 0"
PALM	10' - 0"	10' - 0"	10' - 0"	20' - 0"	25' - 0"	8' - 0"
SHRUBS	5' - 0"	5' - 0"	10' - 0"	5' - 0"	15' - 0"	5' - 0"

NOTE: NO TREE SHALL BE PLANTED WITHIN THE MAINTENANCE BERM OF ANY STORMWATER MANAGMENT FACILITY.

UTILITY CONTACTS

MANATEE COUNTY
 PUBLIC WORKS DEPT.
 UTILITY OPERATIONS
 SCOTT MAY, P.E.
 1022 26TH AVENUE EAST
 BRADENTON, FL. 34208
 (941) 708-7450 EXT. 7650

CROWN CASTLE FIBER, LLC
 DANNY HASKETT
 1601 NW 136TH AVENUE, SUITE A-200
 SUNRISE, FL 33323
 (786) 610-7073
 DANNY.HASKETT@CROWNCastle.COM

FRONTIER FLORIDA LLC.
 DENISE HUTTON
 1701 RINGLING BLVD.
 SARASOTA, FL. 34236
 (941) 906-6722
 DENISE.HUTTON@FTR.COM

TECO/PEOPLES GAS CO.
 ALEX MCFARLANE
 8261 VICO COURT
 SARASOTA, FL. 34240
 (813) 275-3762
 AMCFARLANE@TECOENERGY.COM

MANATEE COUNTY
 TRAFFIC OPERATIONS
 MUKUNDA GOPALAKRISHNA
 2101 47TH TERRACE EAST
 BRADENTON, FL 34203
 OFFICE: (941) 749-3500, EXT. 7813

FLORIDA POWER & LIGHT
 DISTRIBUTION
 GREGORY COKER
 1253 12TH AVENUE EAST
 PALMETTO, FL 34221
 (813) 422-8242
 GREGORY.COKER@FPL.COM

MCI/VERIZON BUSINESS
 ANDY COLE
 7701 EAST TELECOM PARKWAY
 TEMPLE TERRACE, FL 33637
 (813) 847-4037
 ANDREW.COLE2@VERIZONWIRELESS.COM

UNITI FIBER LLC
 TERRY YOUNG
 805 EXECUTIVE CENTER DRIVE WEST, SUITE 1
 ST. PETERSBURG, FL 33702
 (251) 422-3872
 TERRY.YOUNG@UNITI.COM

FLORIDA POWER & LIGHT
 TRANSMISSION
 CRAIG LEDBETTER
 15430 ENDEAVOR DRIVE
 JUPITER, FL 33478
 (561) 803-7942
 CRAIG.LEDBETTER@FPL.COM

SPECTRUM SUNSHINE STATE, LLC
 JAMES (ALEX) FLEMING
 5413 EAST STATE ROAD 64
 BRADENTON, FL 34208
 (941) 213-0877

ZAYO GROUP, LLC
 MATT RICHARDS
 4701 W HILLSBOROUGH AVENUE
 TAMPA, FL 33614
 (813) 587-2584

No.	REVISIONS	DATE	BY



KIMLEY-HORN AND ASSOCIATES, INC.
 201 NORTH FRANKLIN STREET, SUITE 1400, TAMPA, FL 33602
 PHONE: (813) 620-1460
 WWW.KIMLEY-HORN.COM

PROJECT NO. 6107560
DATE 6/8/2023
SCALE AS SHOWN
DESIGNED BY
DRAWN BY
CHECKED BY

MANATEE COUNTY



LENA ROAD

LICENSED PROFESSIONAL

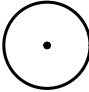
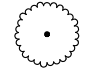

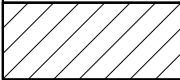
EDWARD M. DEAN, P.L.A.
 FL LICENSE NUMBER
 6667269

DATE: 6/8/2023

**GENERAL AND PAY
 ITEM NOTES**

SHEET NUMBER

2

TREES	CODE	QTY	BOTANICAL NAME	COMMON NAME	CONTAINER	CALIPER	SIZE	
	QV	3	QUERCUS VIRGINIANA	SOUTHERN LIVE OAK	F.G.	4" CAL MIN	14' HT MIN	
	TB	3	TABEBUIA BAHAMENSIS	BAHAMA TABEBUIA	F.G.	2" CAL MIN	10' HT MIN	
SHRUBS	CODE	QTY	BOTANICAL NAME	COMMON NAME	CONTAINER	SPACING	SIZE	
	TD	49	TRIPSACUM DACTYLOIDES	FAKAHATCHEE GRASS	3 GAL	36" OC	18" HT MIN	
SHRUB AREAS	CODE	QTY	BOTANICAL NAME	COMMON NAME	CONTAINER	SPACING	SIZE	
	SC	25	SERENOA REPENS 'CINEREA'	SILVER SAW PALMETTO	3 GAL	60" OC	18" FULL	

No.	REVISIONS	DATE	BY

Kimley»Horn
KIMLEY-HORN AND ASSOCIATES, INC.
201 NORTH FRANKLIN STREET, SUITE 1400, TAMPA, FL 33602
PHONE: (813) 620-1460
WWW.KIMLEY-HORN.COM

PROJECT NO.
6107560
DATE
6/8/2023
SCALE AS SHOWN
DESIGNED BY
DRAWN BY
CHECKED BY

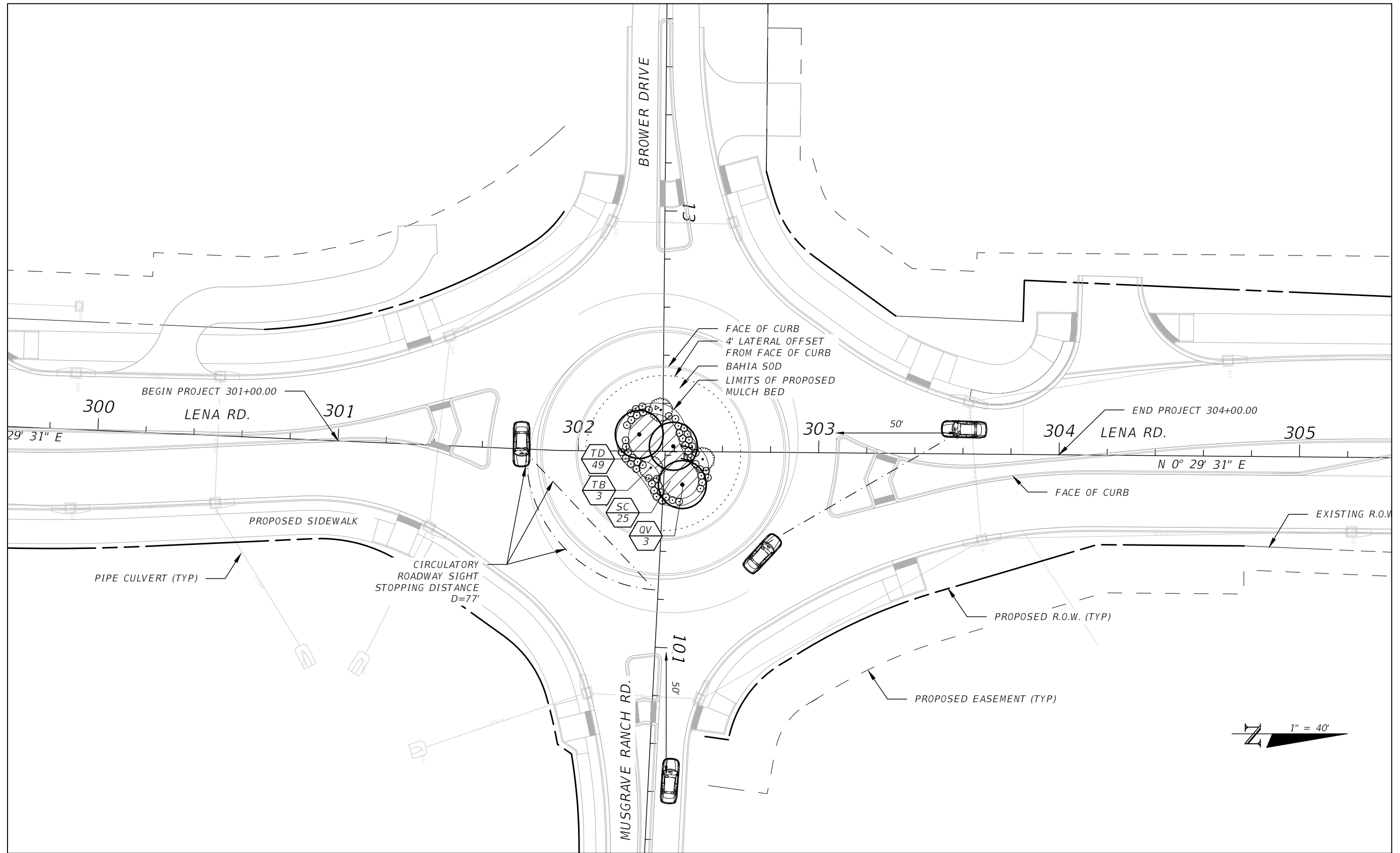

LENA ROAD
MANATEE COUNTY
FL

LICENSED PROFESSIONAL
EDWARD M. DEAN, P.L.A.
FL LICENSE NUMBER
6667269
DATE: 6/8/2023

PLANT SCHEDULE

SHEET NUMBER
3

THE OFFICIAL RECORD OF THIS SHEET IS THE ELECTRONIC FILE DIGITALLY SIGNED AND SEALED UNDER RULE 61G10-11.011, F.A.C.



No.	REVISIONS	DATE	BY

Kimley»Horn
 KIMLEY-HORN AND ASSOCIATES, INC.
 201 NORTH FRANKLIN STREET, SUITE 1400, TAMPA, FL 33602
 PHONE: (813) 620-1460
 WWW.KIMLEY-HORN.COM

PROJECT NO. 6107560
DATE 6/8/2023
SCALE AS SHOWN
DESIGNED BY
DRAWN BY
CHECKED BY

MANATEE COUNTY

Manatee County
 FLORIDA
 LENA ROAD

LICENSED PROFESSIONAL
 EDWARD M. DEAN, P.L.A.
 FL LICENSE NUMBER
 6667269
 FL DATE: 6/8/2023

LANDSCAPE PLAN

SHEET NUMBER
4

THE OFFICIAL RECORD OF THIS SHEET IS THE ELECTRONIC FILE DIGITALLY SIGNED AND SEALED UNDER RULE 61G10-11.011, F.A.C.