

CONSTRUCTION PLANS FOR
PERICO PRESERVE RESTORATION

PART OF SECTIONS 22, 26 AND 27, TOWNSHIP 34 SOUTH, RANGE 16 EAST,
 MANATEE COUNTY, FLORIDA

CLIENT:

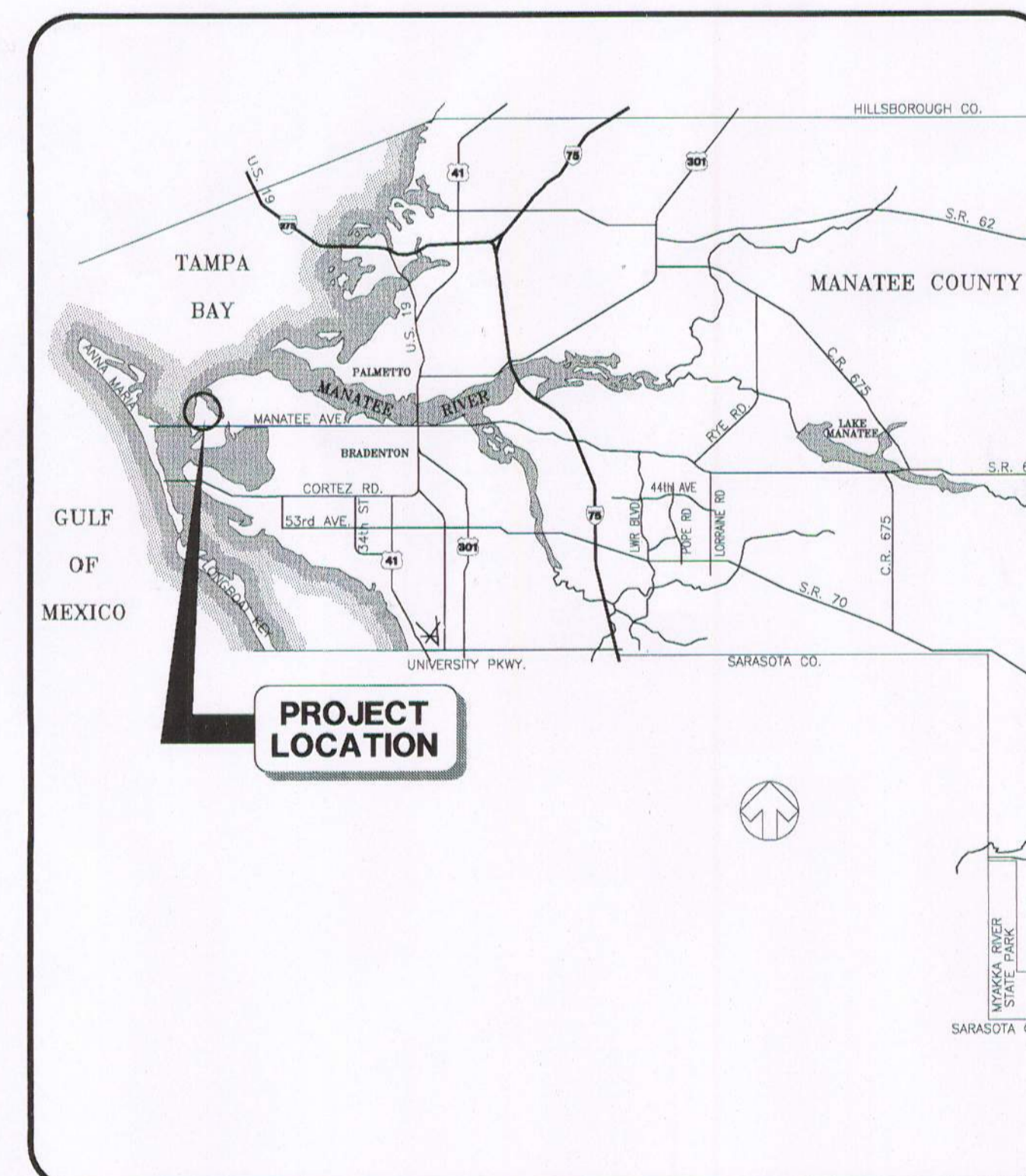
**BOARD OF COUNTY COMMISSIONERS,
 MANATEE COUNTY, FL**

1112 MANATEE AVENUE WEST
 BRADENTON, FL 34205
 (941) 748-4501

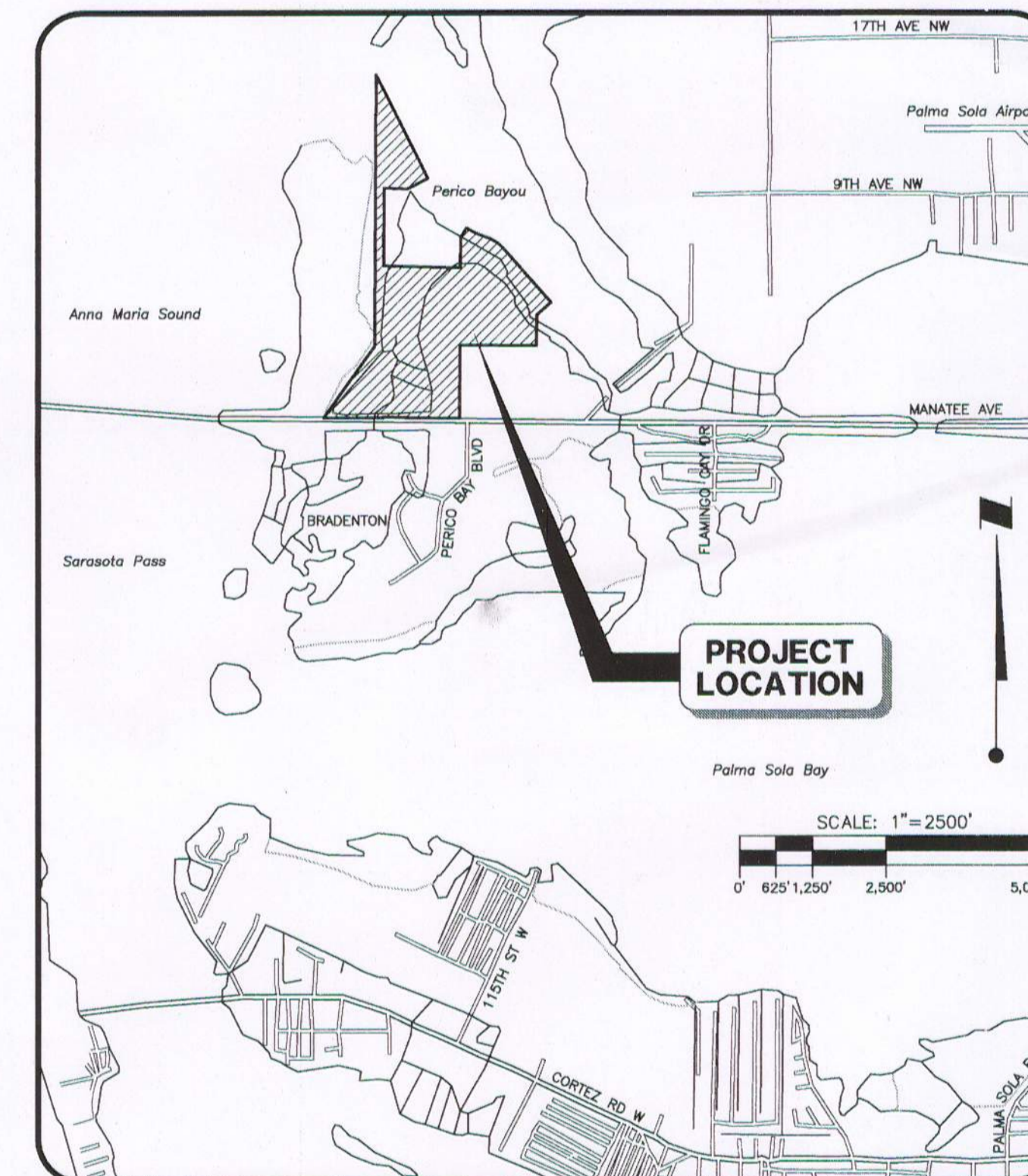
INDEX TO SHEETS

SHEET NO.	DESCRIPTION
1	COVER SHEET
2	EXISTING CONDITIONS/DRAINAGE PATTERNS MAP
3	AERIAL LOCATION MAP
4	MASTER SITE PLAN AND KEY SHEET
5	GRADING PLAN – SOUTH
6	GRADING PLAN – NORTH
7	GRADING PLAN – EAST
8	GRADING CROSS-SECTIONS
9	GRADING CROSS-SECTIONS
10	CONSTRUCTION DETAILS
11	WETLAND CREATION PLANTING PLAN
12	WETLAND CREATION PLANTING PLAN
13	PROJECT SPECIFICATIONS/UPLAND RESTORATION PLANTING TABLES
14	BEST MANAGEMENT PRACTICES PLAN AND DETAILS

- GENERAL SITE CONSTRUCTION NOTES:**
1. THE PURPOSE OF THIS PROJECT IS ECOLOGICAL RESTORATION. THE CONTRACTORS WORKING ON THIS SITE SHALL TAKE GREAT CARE IN AVOIDING UNNECESSARY IMPACTS TO WETLANDS, VEGETATION, AND ANIMALS.
 2. THE INFORMATION PROVIDED IN THESE PLANS IS TO ASSIST THE CONTRACTOR IN ASSESSING THE NATURE AND EXTENT OF THE CONDITIONS WHICH MAY BE ENCOUNTERED DURING THE COURSE OF WORK. ALL CONTRACTORS ARE DIRECTED PRIOR TO BIDDING TO CONDUCT INVESTIGATIONS THEY DEEM NECESSARY TO ARRIVE AT THEIR OWN CONCLUSIONS REGARDING THE ACTUAL CONDITIONS THAT MAY BE ENCOUNTERED AND UPON WHICH THEIR BIDS WILL BE BASED.
 3. THE CONTRACTOR SHALL OBTAIN AND/OR VERIFY EXISTENCE OF ALL REQUIRED PERMITS PRIOR TO STARTING CONSTRUCTION. THE CONTRACTOR SHALL BE RESPONSIBLE FOR OBTAINING ANY PERMITS NOT FURNISHED BY THE OWNER.
 4. PRIOR TO THE START OF CONSTRUCTION ACTIVITY IT SHALL BE THE CONTRACTOR'S RESPONSIBILITY TO NOTIFY SUNSHINE STATE ONE CALL (1-800-432-4770), MANATEE COUNTY PUBLIC WORKS DEPARTMENT, FLORIDA POWER & LIGHT, VERIZON AND ANY OTHER UTILITIES (ELECTRIC, PHONE, GAS, CABLE, ETC.). IT IS THE CONTRACTORS RESPONSIBILITY TO PROTECT EXISTING UTILITIES FROM DAMAGE.
 5. ALL MATERIALS AND CONSTRUCTION SHALL BE IN ACCORDANCE WITH FDOT STANDARDS AND SPECIFICATIONS.
 6. IF HUMAN REMAINS OR ARCHEOLOGICAL ARTIFACTS ARE DISCOVERED DURING THE COURSE OF CONSTRUCTION, THE CONTRACTOR MUST STOP WORK IMMEDIATELY AND PROMPTLY NOTIFY THE PROJECT MANAGER.
 7. THE CONTRACTOR SHALL NOT ENTER UPON, OR ALTER THE WETLAND PRESERVE AREAS THAT MAY BE ONSITE OR DIRECTLY ADJACENT TO THE PROJECT AREA EXCEPT AS NOTED IN THESE DRAWINGS. ALL WORK PERFORMED IN THE VICINITY OF OPEN WATER AND/OR WETLANDS IS TO BE PERFORMED IN COMPLIANCE WITH THE ENVIRONMENTAL PERMITS FOR THE SITE. THE CONTRACTOR WILL BE RESPONSIBLE FOR ANY FINE RESULTING FROM VIOLATION OF PERMIT CONDITIONS.
 8. ALL ELEVATIONS SHOWN ON THIS DRAWING SET ARE RELATIVE TO PROJECT BENCHMARK TBM D-1 – NAIL IN NORTH FACE OF 12' PALM (ELEVATION = 3.20 NAVD 1988).
 9. THE CONTRACTOR SHALL CLEAR AND GRUB TO REMOVE STUMPS, ROOTS, TREES, VEGETATION AND OBSTRUCTIONS TO THE WORK IN ALL AREAS DESIGNATED FOR SITE GRADING. ALL STUMPS, ROOTS, AND OTHER DEBRIS SHALL BE REMOVED FROM WITHIN THE CONSTRUCTION AREAS TO A DEPTH OF AT LEAST 1 FOOT BELOW THE PROPOSED GRADE.
 10. ALL CLEARING, GRUBBING AND EXCAVATED MATERIAL WILL BE TRANSFERRED TO ONSITE UPLAND AREAS AND UTILIZED IN UPLAND ENHANCEMENT ACTIVITIES. VEGETATIVE DEBRIS WILL BE BURNED OR REMOVED FROM SITE AS DIRECTED BY PROJECT MANAGER.
 11. ALL CONSTRUCTION DEBRIS WILL BE REMOVED FROM THE SITE AND DISPOSED OF PROPERLY.
 12. IT IS THE CONTRACTOR'S RESPONSIBILITY TO CALCULATE AND VERIFY ALL CUT AND FILL QUANTITIES OF EARTHWORK FOR THE PROJECT. A BULKING FACTOR SHOULD BE TAKEN INTO ACCOUNT WHEN FIGURING VOLUMES OF FILL PLACEMENT.
 13. IMMEDIATELY BEFORE REQUESTING FINAL INSPECTIONS, THE CONTRACTOR SHALL CHECK ALL LINES AND DRESS TO THE PROPER GRADES/CONTOURS. ALL AREAS ARE TO BE STABILIZED AND MAINTAINED UNTIL ACCEPTANCE. WHEN UPLAND AND WETLAND PLANTING AREAS ARE INDICATED ON DRAWINGS OR SPECIFIED, THE CONTRACTOR SHALL MAKE ALLOWANCES WHEN ROUGH GRADING FOR THE FINISHED GRADES IN THESE AREAS.
 14. POST GRADING SOIL CONDITIONS SHALL BE APPROPRIATE FOR PLANTING WITH LIMITED COMPACTION AS DETERMINED BY PROJECT ECOLOGIST.
 15. ANY DISTURBED AREA WILL BE SEEDED/MULCHED, HYDROSEEDED, OR SODDED OR PLANTED WITH MATERIALS AS SPECIFIED IN THE PLANTING PLANS.
 16. ALL PLANT MATERIAL TO BE INSTALLED SHALL BE HEALTHY, IN GOOD CONDITION, FREE FROM DISEASE AND APPROVED BY A QUALIFIED ECOLOGIST PRIOR TO INSTALLATION.
 17. DURING CONSTRUCTION OF SPOIL REMOVAL SITES, WORK WILL BE DONE FROM UPLANDS TO THE EXTENT POSSIBLE. IN AREAS WHERE EQUIPMENT USED TO PERFORM SPOIL REMOVAL IS REQUIRED TO CROSS WETLANDS/WATERS OF THE UNITED STATES THE PROJECT ECOLOGIST WILL MONITOR THE OPERATION AND ENSURE MINIMAL DAMAGE TO SOIL AND VEGETATION OCCURS. NO EXCAVATED MATERIAL WILL BE PLACED IN WETLANDS AND ANY ALTERATIONS TO GRADE FROM SPOIL REMOVAL WILL BE REPAIRED.
 18. SOILS PITS WERE DUG AND ANALYZED BY A WILSONMILLER STANTEC ECOLOGIST AT SEVERAL LOCATIONS ON THIS SITE TO DETERMINE THE APPROXIMATE ELEVATION OF MEAN HIGH GROUNDWATER ELEVATION CONDITIONS BASED ON DIRECT OBSERVATION OF GROUND WATER AND HYDRIC SOIL INDICATORS. THESE OBSERVATIONS WERE USED TO DETERMINE BOTTOM ELEVATIONS OF WETLAND CREATIONS AREAS.
 19. NO DEWATERING IS PROPOSED. IF DEWATERING IS TO OCCUR PRIOR APPROVAL FROM SWFWMD WILL BE OBTAINED BY CONTRACTOR.
 20. EXISTING WELL HEADS TO BE PROTECTED & MARKED WITH ORANGE SAFETY FENCE (PLASTIC "SNOW FENCE").
 21. THIS CONSTRUCTION PLANS SET INCLUDES THE WORK APPROVED BY SWFWMD ERP 47040580.000 – PERICO PRESERVE RESTORATION AND ERP 47040091.001 – PLANTING AT PERICO WETLAND CREATION AREA.



LOCATION MAP



SITE MAP

NO.	DATE	DESCRIPTION	BY
△	10/12/11	ADD NOTE 21	ATO/B9520
△	08/04/11	REV INDEX TO SHEETS; ADD NOTE 19 & 20	ATO/B9520

STATUS : REVISIONS

PROJECT ECOLOGIST DAMON MOORE	PROJECT MANAGER ELIZABETH ANDREWS	PROJECT ENGINEER R. QUINCE SELLERS, P.E. FLORIDA LICENSE NO. 49374
----------------------------------	--------------------------------------	--

DATE _____ CHECKED BY _____



1777 Tamiami Trail, Suite 206, Port Charlotte, Florida 33948
 800.643.4336 • 941.255.0655 • F 941.255.1755

Certificate of Authorization #43 • FL Lic. # LC-C000170 • stantec.com

WilsonMiller, Inc. became a wholly-owned subsidiary of
 Stantec Consulting Services Inc. on July 23, 2010

PRINTED

NOV 11 2011

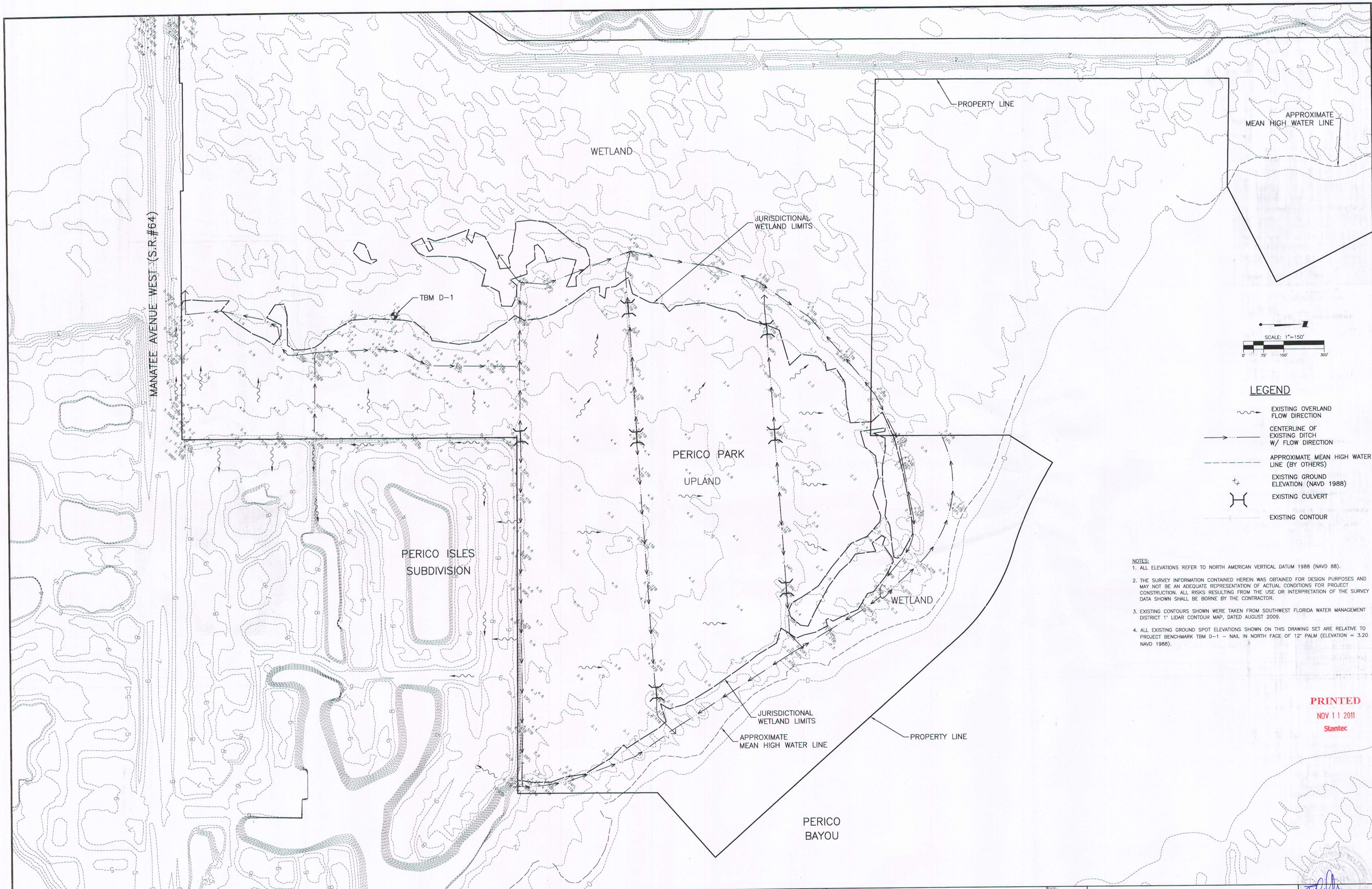
Stantec

RESERVED FOR STATUS AND DATE STAMPS

PROJECT NUMBER
215500132 370

DATE
JUNE 2011

INDEX NUMBER
D-215500132-001



- NOTES:
1. ALL ELEVATIONS REFER TO NORTH AMERICAN VERTICAL DATUM 1988 (NAVD 88).
 2. THE SURVEY INFORMATION CONTAINED HEREIN WAS OBTAINED FOR DESIGN PURPOSES AND MAY NOT BE AN ADEQUATE REPRESENTATION OF ACTUAL CONDITIONS FOR PROJECT CONSTRUCTION. ALL RISKS RESULTING FROM THE USE OR INTERPRETATION OF THE SURVEY DATA SHOWN SHALL BE BORNE BY THE CONTRACTOR.
 3. EXISTING CONTOURS SHOWN WERE TAKEN FROM SOUTHWEST FLORIDA WATER MANAGEMENT DISTRICT 1' LIDAR CONTOUR MAP, DATED AUGUST 2009.
 4. ALL EXISTING GROUND SPOT ELEVATIONS SHOWN ON THIS DRAWING SET ARE RELATIVE TO PROJECT BENCHMARK TBM D-1 - NAIL IN NORTH FACE OF 12" PALM (ELEVATION = 3.20 NAVD 1988).

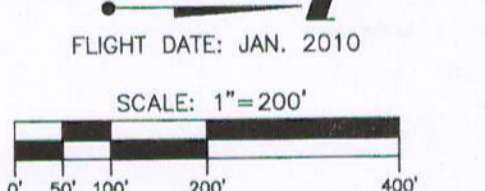
PRINTED
 NOV 11 2011
 Stantec

REV. NO.	REVISION	DATE	DRAWN BY / EMP. NO.	CHECKED BY / EMP. NO.	WM APPROVED BY:

WilsonMiller & Stantec
 1777 Tamiami Trail, Suite 200, Fort Charles, Florida 33548
 800.843.4328 • 641.255.0905 • F 941.255.1755
 Certificate of Authorization #43 • FL Lic. # LC-0008170 • stantec.com
 WilsonMiller, Inc. became a wholly-owned subsidiary of
 Stantec Consulting Services Inc. on July 23, 2010

CLIENT:	MANATEE BOARD OF COUNTY COMMISSIONERS
PROJECT:	PERICO PRESERVE RESTORATION

DATE:	JULY 2011	TITLE:	EXISTING CONDITIONS/ DRAINAGE PATTERNS MAP
HORIZONTAL SCALE:	1"=150'	PROJECT NUMBER:	215500132 370
VERTICAL SCALE:	N/A	CROSS REFERENCE FILE NO.:	
SEC. TWP. RGE.:	2827 34S 16E	SHEET NUMBER:	2 OF 14



LEGEND

13.82± AC	[Pattern]	SPOIL MAINTENANCE (WITHIN EXISTING WETLAND)
109.73± AC	[Pattern]	EXISTING WETLAND (INCLUDES PORTIONS OF PERICO BAYOU)
1.32± AC	[Pattern]	WETLAND ENHANCEMENT - SALT MARSH
0.08± AC	[Pattern]	WETLAND RESTORATION - SALT MARSH
*3.79± AC	[Pattern]	WETLAND CREATION - SALT MARSH
4.46± AC	[Pattern]	WETLAND CREATION - FRESH WATER MARSH
2.64± AC	[Pattern]	UPLAND ENHANCEMENT - HAMMOCK
2.80± AC	[Pattern]	UPLAND RESTORATION - VEGETATIVE SCREEN
3.78± AC	[Pattern]	UPLAND RESTORATION - MARITIME HAMMOCK
0.78± AC	[Pattern]	UPLAND RESTORATION - COASTAL STRAND HAMMOCK
2.29± AC	[Pattern]	UPLAND RESTORATION - FLATWOODS/SALT MARSH TRANSITION
9.48± AC	[Pattern]	UPLAND RESTORATION - FLATWOODS
3.59± AC	[Pattern]	UPLAND RESTORATION - SCRUB PRINTED
5.07± AC	[Pattern]	STAGING AREA
	[Pattern]	AREA NOT INCLUDED

NOTE: * INCLUDES PLANTING AT PERICO WETLAND CREATION

REV. NO.	REVISION	DATE	DRAWN BY / EMP. NO.	CHECKED BY / EMP. NO.	WM APPROVED BY:
B	REV PLANS TO INCLUDE PLANTING AT PERICO WETLAND CREATION	10/12/11	ATO/89520		
A	REV HATCHING & LEGEND	07/26/11	ATO/89520		

WilsonMiller & Stantec

1777 Tamiami Trail, Suite 200, Fort Lauderdale, Florida 33304
 954.433.4333 • 954.255.9955 • F 954.255.1755
 Certificate of Authorization #43 • FL Lic. # LC-0000170 • stantec.com

WilsonMiller, Inc. became a wholly-owned subsidiary of Stantec Consulting Services Inc. on July 23, 2010

CLIENT: MANATEE BOARD OF COUNTY COMMISSIONERS

PROJECT: PERICO PRESERVE RESTORATION

DATE: JUNE 2011
 HORIZONTAL SCALE: 1" = 200'
 VERTICAL SCALE: N/A

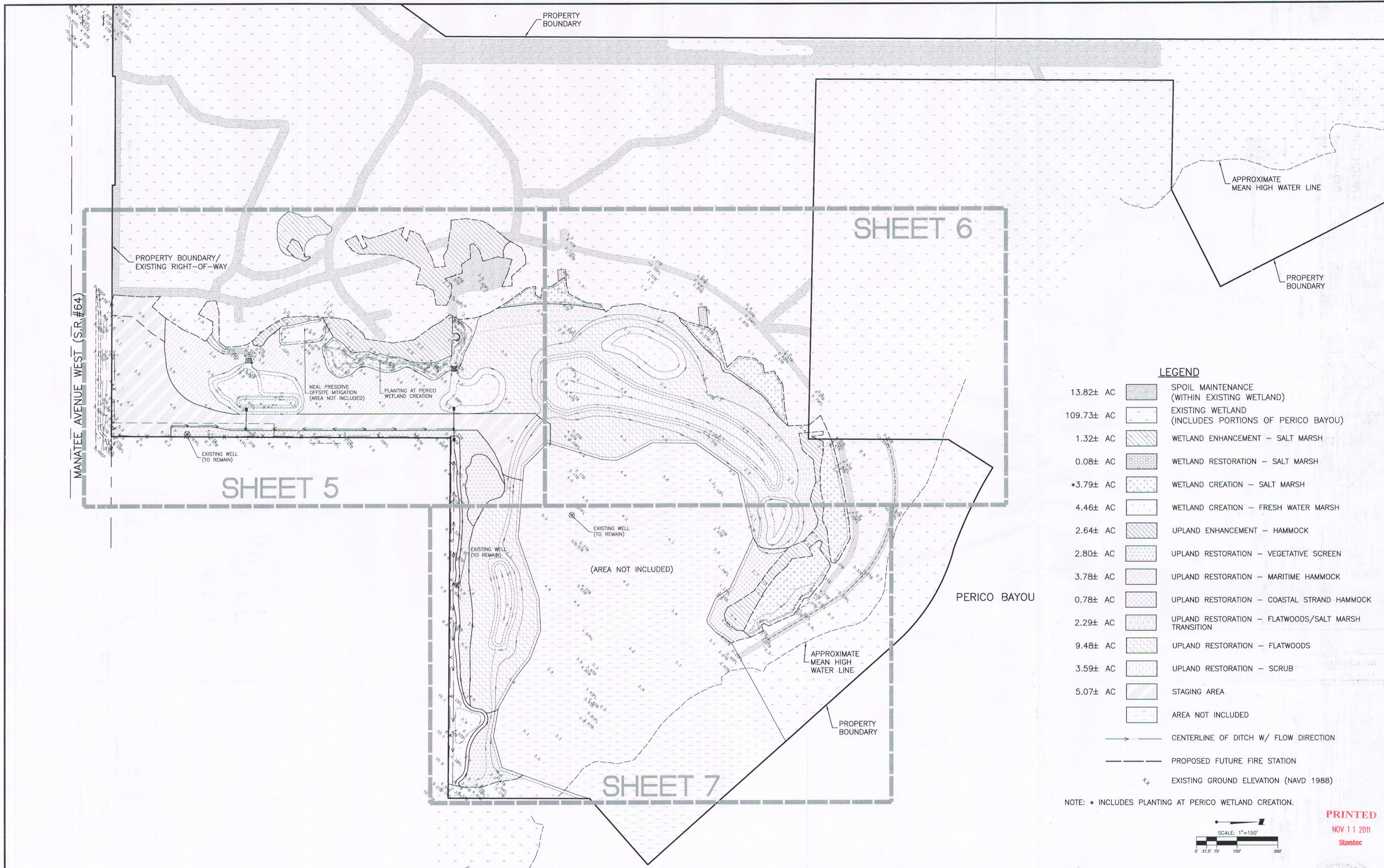
TITLE: AERIAL LOCATION MAP

CROSS REFERENCE FILE NO.: 215500132_370

PROJECT NUMBER: 215500132 370

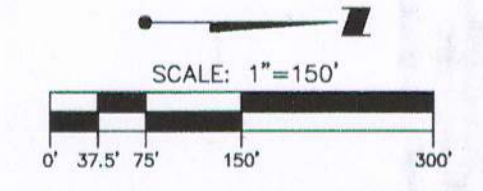
SHEET NUMBER: 3 OF 14

DATE: NOV 11 2011
 Stantec



- LEGEND**
- 13.82± AC [Hatched pattern] SPOIL MAINTENANCE (WITHIN EXISTING WETLAND)
 - 109.73± AC [Dotted pattern] EXISTING WETLAND (INCLUDES PORTIONS OF PERICO BAYOU)
 - 1.32± AC [Diagonal hatching] WETLAND ENHANCEMENT - SALT MARSH
 - 0.08± AC [Cross-hatched] WETLAND RESTORATION - SALT MARSH
 - *3.79± AC [Stippled] WETLAND CREATION - SALT MARSH
 - 4.46± AC [White] WETLAND CREATION - FRESH WATER MARSH
 - 2.64± AC [Diagonal hatching] UPLAND ENHANCEMENT - HAMMOCK
 - 2.80± AC [Cross-hatched] UPLAND RESTORATION - VEGETATIVE SCREEN
 - 3.78± AC [Diagonal hatching] UPLAND RESTORATION - MARITIME HAMMOCK
 - 0.78± AC [Stippled] UPLAND RESTORATION - COASTAL STRAND HAMMOCK
 - 2.29± AC [Cross-hatched] UPLAND RESTORATION - FLATWOODS/SALT MARSH TRANSITION
 - 9.48± AC [Diagonal hatching] UPLAND RESTORATION - FLATWOODS
 - 3.59± AC [Diagonal hatching] UPLAND RESTORATION - SCRUB
 - 5.07± AC [White] STAGING AREA
 - [White] AREA NOT INCLUDED
 - [Line with arrow] CENTERLINE OF DITCH W/ FLOW DIRECTION
 - [Dashed line] PROPOSED FUTURE FIRE STATION
 - [Symbol] EXISTING GROUND ELEVATION (NAVD 1988)

NOTE: * INCLUDES PLANTING AT PERICO WETLAND CREATION.



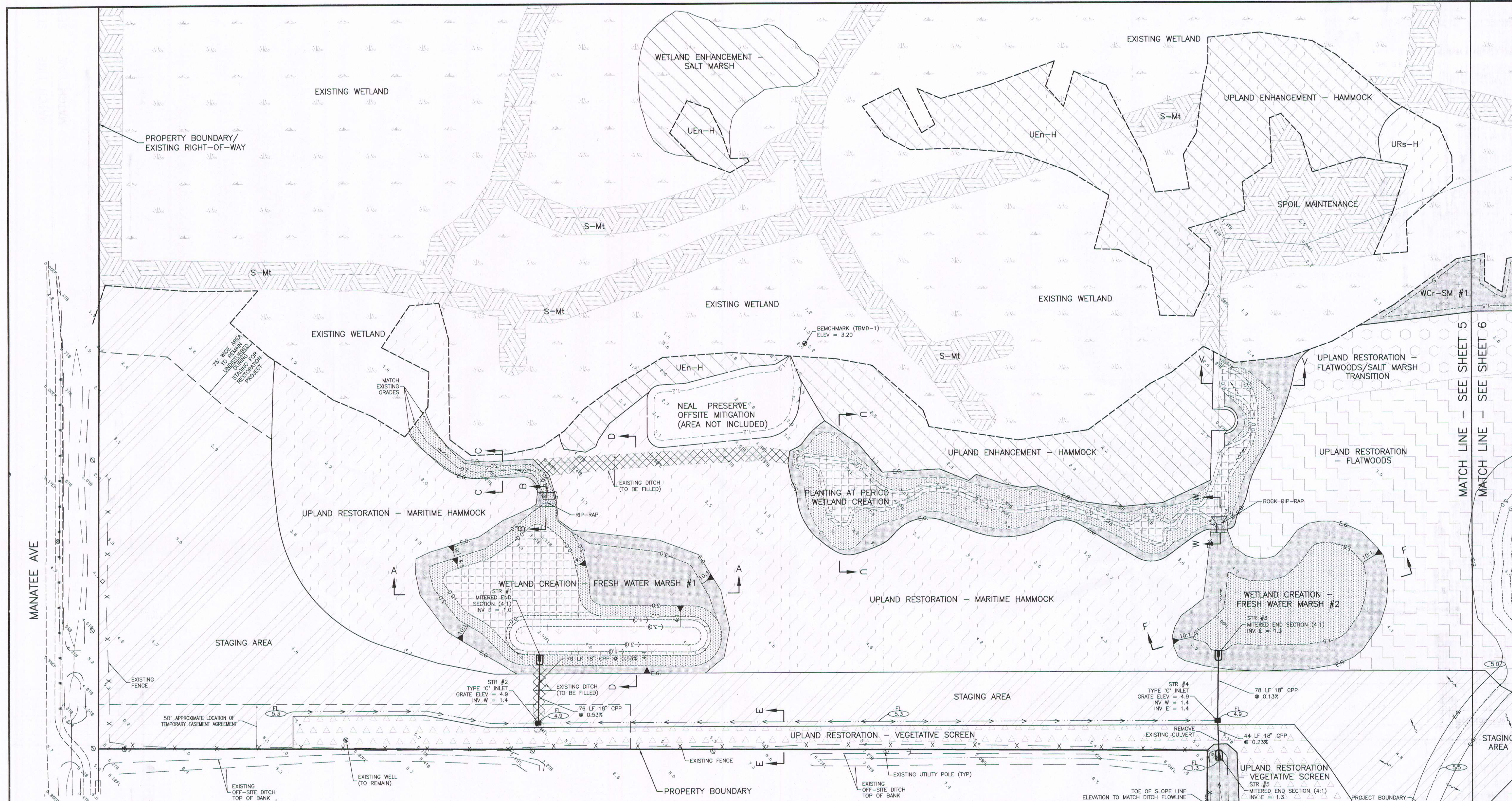
PRINTED
NOV 11 2011
Stantec

REV NO.	REVISION	DATE	DRAWN BY / EMP. NO.	CHECKED BY / EMP. NO.	WM APPROVED BY:
C	REVISE PLAN TO INCLUDE PLANTING AT PERICO WETLAND CREATION	10/12/11	ATO/89520		
B	SHOW EXISTING WELLS	08/04/11	ATO/89520		
A	REV HATCHING & LEGEND	07/26/11	ATO/89520		

WilsonMiller Stantec
 1777 Tamiami Trail, Suite 206, Port Charlotte, Florida 33948
 888.843.4338 • 941.255.0950 • 941.255.1735
 Certificate of Authorization #01 • FL Lic. #LC-2000078 • stantec.com
 WilsonMiller, Inc. became a wholly-owned subsidiary of Stantec Consulting Services Inc. on July 23, 2010.

CLIENT: MANATEE BOARD OF COUNTY COMMISSIONERS
 PROJECT: PERICO PRESERVE RESTORATION

DATE: JUNE 2011
 HORIZONTAL SCALE: 1"=150'
 VERTICAL SCALE: N/A
 SHEET: 345 OF 16E
 CROSS REFERENCE FILE NO.:
 PROJECT NUMBER: 215500132 370
 TITLE: MASTER SITE PLAN AND KEY SHEET
 INDEX NUMBER: D-215500132-004
 SHEET NUMBER: 4 OF 14



LEGEND	
13.82± AC	SPOIL MAINTENANCE, (S-Mt) (WITHIN EXISTING WETLAND)
109.73± AC	EXISTING WETLAND (INCLUDES PORTIONS OF PERICO BAYOU)
1.32± AC	WETLAND ENHANCEMENT - SALT MARSH (WEn-SM)
0.08± AC	WETLAND RESTORATION - SALT MARSH (WRs-SM)
4.37± AC	WETLAND CREATION - SALT MARSH (WCr-SM)
4.46± AC	WETLAND CREATION - FRESH WATER MARSH (WCr-FW)
2.64± AC	UPLAND ENHANCEMENT - HAMMOCK (UEn-H)
2.80± AC	UPLAND RESTORATION - VEGETATIVE SCREEN (URs-VS)
3.78± AC	UPLAND RESTORATION - MARITIME HAMMOCK (URs-MH)
0.78± AC	UPLAND RESTORATION - COASTAL STRAND HAMMOCK (URs-CSH)
2.29± AC	UPLAND RESTORATION - FLATWOODS/SALT MARSH TRANSITION (URs-FW/SMT)
9.48± AC	UPLAND RESTORATION - FLATWOODS (URs-FW)
3.59± AC	UPLAND RESTORATION - SCRUB (URs-S)
5.07± AC	STAGING AREA
(Hatched Pattern)	(AREA NOT INCLUDED)
(Cross-hatched Pattern)	EXISTING DITCH TO BE FILLED (WATERS OF THE U.S.)
(Dotted Pattern)	PLANTING ZONE 'A' (SEE SHEET 11,12)
(Stippled Pattern)	PLANTING ZONE 'B' (SEE SHEET 11,12)
(Grid Pattern)	PLANTING ZONE 'C' (SEE SHEET 11,12)
(X-X)	CROSS-SECTION (SEE SHEETS 8-9)

NOTE: * INCLUDES PLANTING AT PERICO WETLAND CREATION.

PERICO ISLES SUBDIVISION

SCALE: 1"=50'

EXISTING DITCH TOP OF BANK

TOE OF SLOPE LINE ELEVATION TO MATCH DITCH FLOWLINE

REMOVE EXISTING CULVERT

44 LF 18" CPP @ 0.23%

STR #5 MITERED END SECTION (4:1) INV E = 1.3

UPLAND RESTORATION - VEGETATIVE SCREEN

URs-FW

NUMEROUS EXISTING CARABBEA PALMS (TO REMAIN)

PRINTED
NOV 11 2011
Stantec

REV NO.	REVISION	DATE	DRAWN BY / EMP. NO.	CHECKED BY / EMP. NO.	ACTIVITY	INITIALS/EMP. NO.	DATE
D	REVISE ZONE C HATCH PATTERN	11/11/11	ATO/B9520		DESIGNED BY:		
C	REVISE PLAN TO INCLUDE PLANTING AT PERICO WETLAND CREATION	10/12/11	ATO/B9520		DRAWN BY:	ATO/B9520	06/23/11
B	SHOW AREA TO REMAIN UNDISTURBED	08/04/11	ATO/B9520		CHECKED BY:		
A	REV HATCHING & LEGEND	07/26/11	ATO/B9520		CONTRACT ADMIN. BY:		
					WM APPROVED BY:		

WilsonMiller & Stantec

1777 Tipton Trail, Suite 200, Port Charlotte, Florida 39968
888.443.4334 • 941.226.6555 • 941.255.1755
Certificate of Authorization #43 • FL Lic. # LC200170 • stantec.com

WilsonMiller, Inc. became a wholly-owned subsidiary of Stantec Consulting Services Inc. on July 23, 2010

CLIENT: MANATEE BOARD OF COUNTY COMMISSIONERS

PROJECT: PERICO PRESERVE RESTORATION

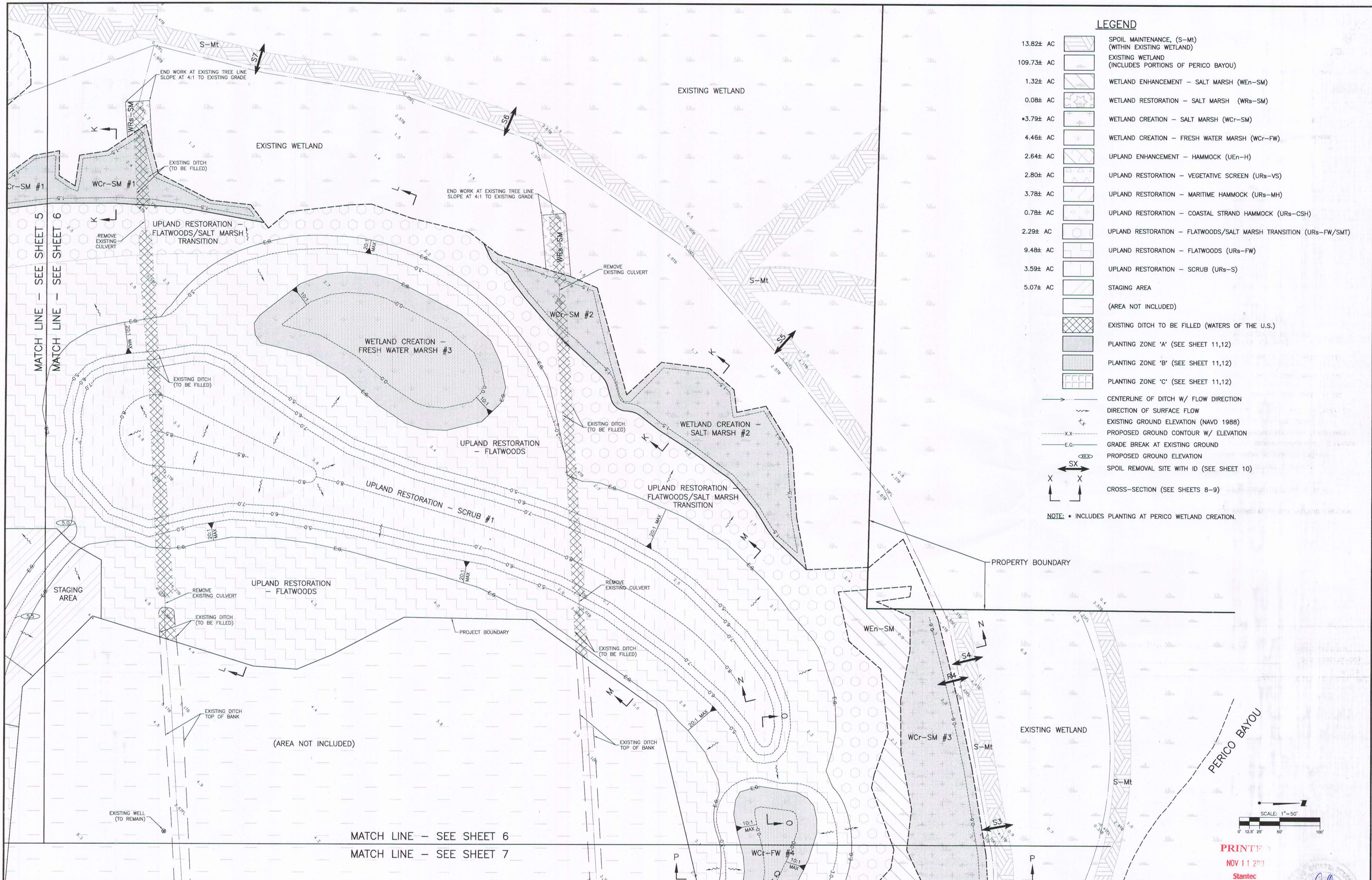
DATE: JUNE 2011

TITLE: GRADING PLAN - SOUTH

CROSS REFERENCE FILE NO.: D-215500132-005

PROJECT NUMBER: 215500132 370

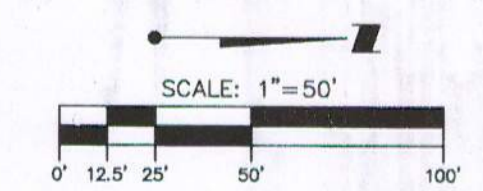
SHEET NUMBER: 5 OF 14



LEGEND

- 13.82± AC SPOIL MAINTENANCE, (S-Mt) (WITHIN EXISTING WETLAND)
- 109.73± AC EXISTING WETLAND (INCLUDES PORTIONS OF PERICO BAYOU)
- 1.32± AC WETLAND ENHANCEMENT - SALT MARSH (WEn-SM)
- 0.08± AC WETLAND RESTORATION - SALT MARSH (WRs-SM)
- 4.79± AC WETLAND CREATION - SALT MARSH (WCr-SM)
- 4.46± AC WETLAND CREATION - FRESH WATER MARSH (WCr-FW)
- 2.64± AC UPLAND ENHANCEMENT - HAMMOCK (UEn-H)
- 2.80± AC UPLAND RESTORATION - VEGETATIVE SCREEN (URs-vs)
- 3.78± AC UPLAND RESTORATION - MARITIME HAMMOCK (URs-MH)
- 0.78± AC UPLAND RESTORATION - COASTAL STRAND HAMMOCK (URs-CSH)
- 2.29± AC UPLAND RESTORATION - FLATWOODS/SALT MARSH TRANSITION (URs-FW/SMT)
- 9.48± AC UPLAND RESTORATION - FLATWOODS (URs-FW)
- 3.59± AC UPLAND RESTORATION - SCRUB (URs-S)
- 5.07± AC STAGING AREA (AREA NOT INCLUDED)
- EXISTING DITCH TO BE FILLED (WATERS OF THE U.S.)
- PLANTING ZONE 'A' (SEE SHEET 11,12)
- PLANTING ZONE 'B' (SEE SHEET 11,12)
- PLANTING ZONE 'C' (SEE SHEET 11,12)
- CENTERLINE OF DITCH W/ FLOW DIRECTION
- DIRECTION OF SURFACE FLOW
- EXISTING GROUND ELEVATION (NAVD 1988)
- PROPOSED GROUND CONTOUR W/ ELEVATION
- GRADE BREAK AT EXISTING GROUND
- PROPOSED GROUND ELEVATION
- SPOIL REMOVAL SITE WITH ID (SEE SHEET 10)
- CROSS-SECTION (SEE SHEETS 8-9)

NOTE: * INCLUDES PLANTING AT PERICO WETLAND CREATION.



PRINTED
NOV 11 2011
Stantec

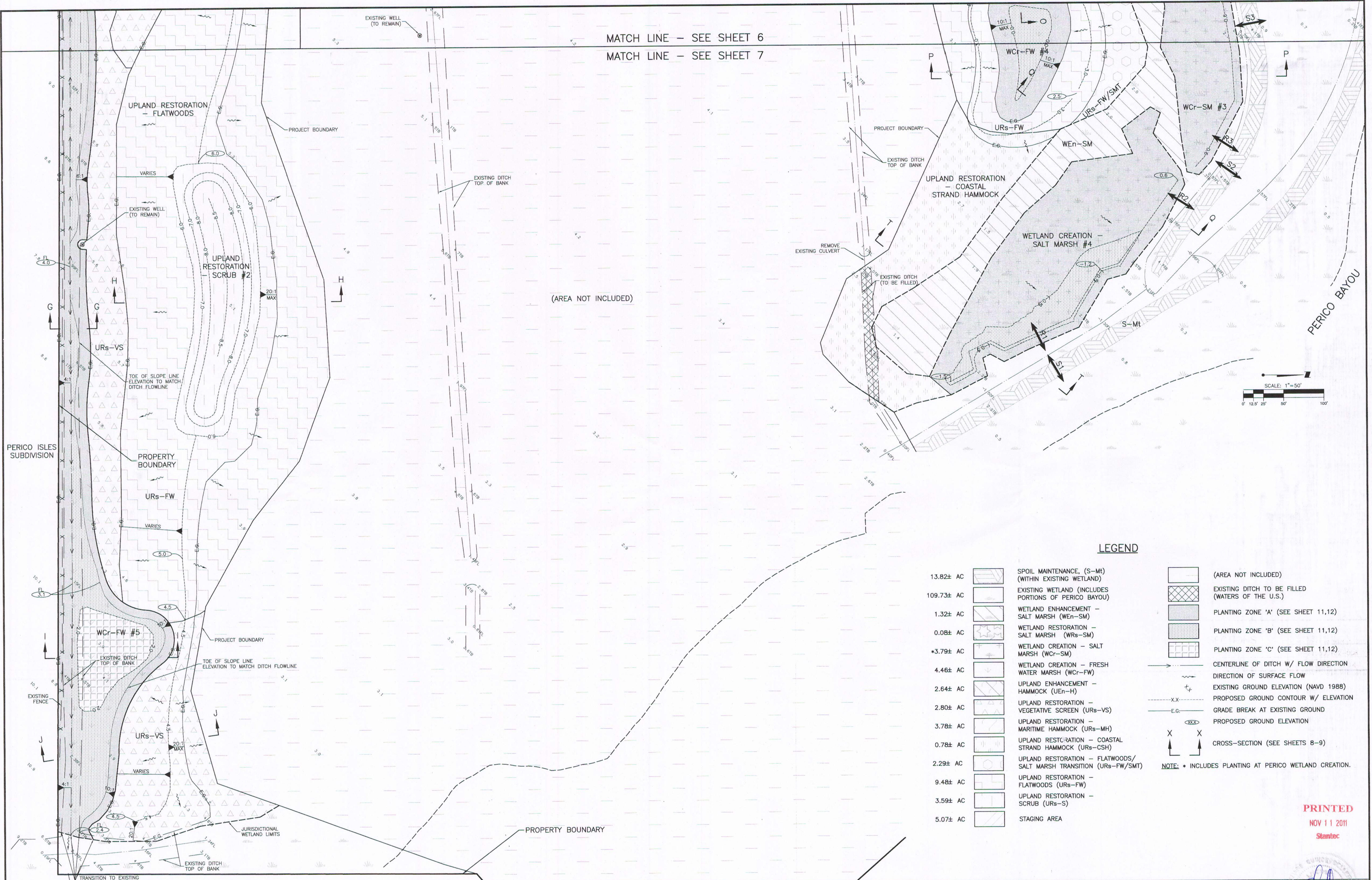
REV NO.	REVISION	DATE	DRAWN BY / EMP. NO.	CHECKED BY / EMP. NO.	WM APPROVED BY:
D	REVISE ZONE C HATCH PATTERN	11/11/11	ATO/89520		
C	REVISE PLAN TO INCLUDE PLANTING AT PERICO WETLAND CREATION	10/12/11	ATO/89520		
B	SHOW EXISTING WETLAND IN AREA NOT INCLUDED	08/04/11	ATO/89520		
A	REV HATCHING & LEGEND	07/26/11	ATO/89520		

WilsonMiller & Stantec
 1777 Tamiami Trail, Suite 206, Port Charlotte, Florida 33948
 888.632.4284 • 414.255.0954 • 781.255.1705
 Certificate of Authorization #43 • FL Lic. #LC-0500170 • stantec.com
 WilsonMiller, Inc. became a wholly-owned subsidiary of Stantec Consulting Services Inc. on July 23, 2010

CLIENT: MANATEE BOARD OF COUNTY COMMISSIONERS
 PROJECT: PERICO PRESERVE RESTORATION

DATE: JUNE 2011
 HORIZONTAL SCALE: 1"=50'
 VERTICAL SCALE: N/A
 SEE: TWP. REG. 227 34S 16E
 CROSS REFERENCE FILE NO.:
 PROJECT NUMBER: 215500132 370
 SHEET NUMBER: 6 OF 14
 TITLE: GRADING PLAN - NORTH
 INDEX NUMBER: D-215500132-006

MATCH LINE - SEE SHEET 6
 MATCH LINE - SEE SHEET 7



LEGEND

- 13.82± AC [Symbol] SPOIL MAINTENANCE, (S-Mt) (WITHIN EXISTING WETLAND)
 - 109.73± AC [Symbol] EXISTING WETLAND (INCLUDES PORTIONS OF PERICO BAYOU)
 - 1.32± AC [Symbol] WETLAND ENHANCEMENT - SALT MARSH (WEn-SM)
 - 0.08± AC [Symbol] WETLAND RESTORATION - SALT MARSH (WRs-SM)
 - 4.79± AC [Symbol] WETLAND CREATION - SALT MARSH (WCr-SM)
 - 4.46± AC [Symbol] WETLAND CREATION - FRESH WATER MARSH (WCr-FW)
 - 2.64± AC [Symbol] UPLAND ENHANCEMENT - HAMMOCK (UEn-H)
 - 2.80± AC [Symbol] UPLAND RESTORATION - VEGETATIVE SCREEN (URs-VS)
 - 3.78± AC [Symbol] UPLAND RESTORATION - MARITIME HAMMOCK (URs-MH)
 - 0.78± AC [Symbol] UPLAND RESTORATION - COASTAL STRAND HAMMOCK (URs-CSH)
 - 2.29± AC [Symbol] UPLAND RESTORATION - FLATWOODS/SALT MARSH TRANSITION (URs-FW/SMT)
 - 9.48± AC [Symbol] UPLAND RESTORATION - FLATWOODS (URs-FW)
 - 3.59± AC [Symbol] UPLAND RESTORATION - SCRUB (URs-S)
 - 5.07± AC [Symbol] STAGING AREA
 - [Symbol] (AREA NOT INCLUDED)
 - [Symbol] EXISTING DITCH TO BE FILLED (WATERS OF THE U.S.)
 - [Symbol] PLANTING ZONE 'A' (SEE SHEET 11,12)
 - [Symbol] PLANTING ZONE 'B' (SEE SHEET 11,12)
 - [Symbol] PLANTING ZONE 'C' (SEE SHEET 11,12)
 - [Symbol] CENTERLINE OF DITCH W/ FLOW DIRECTION
 - [Symbol] DIRECTION OF SURFACE FLOW
 - [Symbol] EXISTING GROUND ELEVATION (NAVD 1988)
 - [Symbol] PROPOSED GROUND CONTOUR W/ ELEVATION
 - [Symbol] GRADE BREAK AT EXISTING GROUND
 - [Symbol] PROPOSED GROUND ELEVATION
 - [Symbol] CROSS-SECTION (SEE SHEETS 8-9)
- NOTE: * INCLUDES PLANTING AT PERICO WETLAND CREATION.

REV NO.	REVISION	DATE	DRAWN BY / EMP. NO.	CHECKED BY / EMP. NO.	WM APPROVED BY:	ACTIVITY	INITIALS/EMP. NO.	DATE
D	REVISE ZONE C HATCH PATTERN	11/11/11	ATO/B9520			DESIGNED BY:		
C	REVISE PLAN TO INCLUDE PLANTING AT PERICO WETLAND CREATION	10/12/11	ATO/B9520			DRAWN BY:	ATO/B9520	06/23/11
B	ADD TRANSITION LABEL AT WCr-FW #5	08/16/11	ATO/B9520			CHECKED BY:		
A	REV HATCHING & LEGEND	07/26/11	ATO/B9520			CONTRACT ADMIN. BY:		

WilsonMiller Stantec

1777 Ferguson Trail, Suite 206, Port Charlotte, Florida 33948
 888.643.6336 • 407.256.9355 • FAX: 256.1750
 Certificate of Authorization #43 • FL Lic. # LC0000170 • stantec.com

WilsonMiller, Inc. became a wholly-owned subsidiary of Stantec Consulting Services Inc. on July 23, 2010

CLIENT: MANATEE BOARD OF COUNTY COMMISSIONERS

PROJECT: PERICO PRESERVE RESTORATION

DATE: JUNE 2011

HORIZONTAL SCALE: 1"=50'

VERTICAL SCALE: N/A

TITLE: GRADING PLAN - EAST

PROJECT NUMBER: 215500132 370

CROSS REFERENCE FILE NO.:

INDEX NUMBER: D-215500132-007

SHEET NUMBER: 7 OF 14

DATE: NOV 11 2011 09:19:01

PRINTED
 NOV 11 2011
 Stantec