

DESIGN FILE: P:\Mte2057\01m\CADD-deta\dwg\sumpr-001.dgn PLOT FILE: _PLOTFILE_

PLOT DATE: 2/4/2009

CONSTRUCTION				
BID ITEM	FDOT ITEM	DESCRIPTION	UNIT	QTY.
1	101-1	Mobilization	LS	1
2	102-1	Maintenance of Traffic	LS	1
3		Special Provisions Utility Coordination	LS	1
4	102-3	Commercial Mat for Drwy Maint	CY	300
5	104-10-2	Synthetic Bales	LF	950.0
6	104-11	Floating Turbidity Barrier	LF	400
7	104-13-1	Staked Silt Fence (Type III)	LF	9,800
8	104-15	Silt Tracking Prevention Device	EA	3
9	104-16	Rock Bags	EA	500
10	110-1-1	Clearing & Grubbing	AC	32
11	110-4	Removal of Exist. Conc. Pymt.	SY	1,928
12	110-7-1	Mailbox (Furnish & Install)	EA	2
13	120-1	Regular Excavation	CY	41,128
14	120-4	Excavation, Subsoil (Roadway)	CY	26,576
15	120-4	Excavation, Subsoil (Rock)	CY	59,857
16	120-6	Embankment (Regular)	CY	28,124
17	120-6	Embankment (Replacement for Rock Removal)	CY	12,000
18	160-6	12" Stabilized Sub-base	SY	38,100
19	285-701	4" Type ABC-III Base	SY	100
20	285-709	10" Limerock Base	SY	34,300
21	327-70-6	Milling Exist. Asph. Pavement (1.5" Avg. Depth)	SY	1,850
22	334-1-14	2" Type S-1 Asphalt Concrete (Incl Tack Coat)	TN	3,430
23	337-7-31	Asph. Friction Course (FC-12.5) (Traffic B)(Rubber)(165 lbs/sy)	TN	165
24	334-1-14	1" Type S-III Asphalt Concrete	TN	1,715
25	400-1-2	Class I Concrete (Endwalls)	CY	80
26	400-1-15	Class I Concrete (Misc)	CY	22
27	400-2-2	Class II Concrete (Endwalls)	CY	22
28	410-70-085	Precast Box Culvert (8'x5')	LF	120
29	415-1-6	Reinforcing Steel	LB	2,300
30	425-1-351	Inlets (Curb) (Type P-5) (<10')	EA	10
31	425-1-381	Inlets (Curb) (Type P-6) (<10')	EA	12
32	425-1-451	Inlets (Curb) (Type J-5) (<10')	EA	2
33	425-1-481	Inlets (Curb) (Type J-6) (<10')	EA	3
34	425-1-521	Inlet (Dt Bot) (Type C) (<10')	EA	3
35	425-1-531	Inlet (Dt Bot) (Type C Modified) (<10')	EA	3
36	425-1-589	Inlet (Dt Bot) (Type H Modified) (<10')	EA	2
37	425-1-600	Diversion Structure (Attenuation Pond)	EA	1
38	425-2-41	Manholes (P-7) (<10')	EA	5
39	425-2-71	Manholes (J-7) (<10')	EA	9
40	430-171-101	Pipe Storm Sewer Culv (RCP)(15')	LF	430
41	430-171-101	Pipe Storm Sewer Culv (RCP)(18')	LF	1,020
42	430-171-101	Pipe Storm Sewer Culv (RCP)(24')	LF	1,320
43	430-171-102	Pipe Storm Sewer Culv (RCP)(30')	LF	1,540
44	430-171-102	Pipe Storm Sewer Culv (RCP)(36')	LF	570
45	430-171-105	Pipe Storm Sewer Culv (RCP)(84')	LF	18
46	430-171-201	Pipe Storm Sewer Culv (ERCP) (14"x23")	LF	980
47	430-171-202	Pipe Storm Sewer Culv (ERCP) (29"x45")	LF	75
48	430-171-204	Pipe Storm Sewer Culv (ERCP) (43"x69")	LF	280
49	430-171-204	Pipe Storm Sewer Culv (ERCP) (48"x78")	LF	155
50	430-172-201	Pipe Cross Drain Culv (ERCP) (12"x18")	LF	105
51	430-172-205	Pipe Cross Drain Culv (ERCP) (68"x91")	LF	245
52	430-984-129	MES (Round) (24" SD)	EA	2
53	430-984-138	MES (Round) (36" SD)	EA	1
54	430-984-825	MES (Conc Pipe Ellip) (14"x23") (SD)	EA	3
55	430-984-838	MES (Conc Pipe Ellip) (29"x45") (SD)	EA	1
56	430-984-843	MES (Conc Pipe Ellip) (Double) (48"x78") (SD)	EA	1

CONSTRUCTION				
BID ITEM	FDOT ITEM	DESCRIPTION	UNIT	QTY.
57	515-1-2	Pipe Handrail (Aluminum)	LF	170
58	520-1-7	Type E Curb & Gutter	LF	6,200
59	520-1-10	Type F Curb & Gutter	LF	9,350
60	520-70	Concrete Traffic Separator (Special)(VW)	SY	75
61	522-1	4" Concrete Sidewalk	SY	4,800
62	522-2	6" Concrete Sidewalk	SY	1,150
63	530-1	Rip-Rap (Sand Cement)	CY	46
64	530-3-4	Rip-Rap (Rubble) (Ditch Lining)	TN	425
65	536-73	Guardrail Removal	LF	70
66	536-85-22	Guardrail End Anchorage Assembly	EA	1.0
67	550-10-222	Fencing, Type B, 6' Height w/Vinyl Coating, Green	LF	5,553
68	550-60-233	Fence Gate, Type B, Sliding, 15' Opening, w/Vinyl Coating, Green	EA	1
69	550-60-237	Fence Gate, Type B, Sliding, 44' Opening, w/Vinyl Coating, Green	EA	3
70	570-1-2	Sodding (Performance Turf) (Includes Mowing)	SY	35,200

SEWER IMPROVEMENTS				
BID ITEM	FDOT ITEM	DESCRIPTION	UNIT	QTY.
71	1050-11-222	Pipe, F&I, PVC, FM, 4" (SDR 26) (Incl all flgs and jnts)	LF	205
72	1050-11-224	Pipe, F&I, PVC, Sanitary, 8" (SDR 25) (Incl all jnts)	LF	776
73	1050-11-92	Service, Sanitary, F&I, 6" (Incl connects and cleanouts)	EA	11
74	1050-16-2	Pipe, Remove, 4"	LF	455
75	1050-16-4	Pipe, Remove, 8"	LF	85
76	1055-11-254	Fittings, F&I, Plug, 8"	EA	12
77	1060-11-223	Manhole, Sanitary (> 12' Deep)	EA	3
78	1060-15	Adjust Existing Manhole, Adjust Rim	EA	17
79	1060-15	Modify Existing Manhole, Core Bore Manhole (4'-6" Deep)	EA	1
80	1060-15	Modify Existing Manhole, Core Bore Manhole (12'-14" Deep)	EA	3
81	1060-15	Modify Existing Manhole, Core Bore Manhole (14'-16" Deep)	EA	4
82	1060-15	Modify Existing Manhole, Retrofit Inside Drop, 4", (4'-6" Drop)	EA	1
83	1060-15	Modify Existing Manhole, Remove and Plug Existing Stub-out	EA	3
84	1060-15	Modify Existing Manhole, New Connection, 4", (4'-6" Deep)	EA	1
85	1060-15	Modify Existing Manhole, New Connection, 8", (12'-14" Deep)	EA	8
86	1060-15	Modify Existing Manhole, New Connection, 8", (14'-16" Deep)	EA	4
87	1060-16	Remove Existing Manhole (14'-16" Deep)	EA	2

WATER IMPROVEMENTS				
BID ITEM	FDOT ITEM	DESCRIPTION	UNIT	QTY.
88	1050-11-114	Conc. Collar for 8" DIP Pipe	LF	1
89	1050-11-223	Pipe, F&I, PVC, Water, 6" (C-900) (Incl all flgs and jnts)	LF	137
90	1050-11-223	Pipe, F&I, PVC, Water, 6" (C-900) (Incl all flgs and jnts) (R.J.)	LF	60
91	1050-11-224	Pipe, F&I, PVC, Water, 8" (C-900) (Incl all jnts)	LF	2892
92	1050-11-224	Pipe, F&I, PVC, Water, 8" (C-900) (Incl all jnts) (R.J.)	LF	358
93	1050-11-423	Pipe, F&I, DIP, Water, 6" (Class 50) (Incl all flgs and jnts) (R.J.)	LF	703
94	1050-11-424	Pipe, F&I, DIP, Water, 8" (Class 50) (Incl all jnts) (R.J.)	LF	858
95	1050-11-92	Service, Water, F&I (Incl Connects, Valves, Meters and Boxes)	EA	22
96	1050-16-223	Pipe, Remove, 6"	LF	1585
97	1050-16-224	Pipe, Remove, 8"	LF	755
98	1055-11-414	Fittings, F&I, Ductile Iron, Bend, 8"	EA	20
99	1055-11-424	Fittings, F&I, Ductile Iron, Tee, 8"x8"	EA	5
100	1055-11-424	Fittings, F&I, Ductile Iron, Tee, 8"x8"	EA	3
101	1055-11-424	Fittings, F&I, Ductile Iron, Tee, 10"x10"	EA	1
102	1055-11-434	Fittings, F&I, Ductile Iron, Reducer, 8"x8"	EA	2
103	1055-11-434	Fittings, F&I, Ductile Iron, Reducer, 10"x8"	EA	1
104	1055-11-454	Fittings, F&I, Ductile Iron, Plug, 8"	EA	1
105	1055-11-494	Fittings, F&I, Ductile Iron, Cross, 8"x8"	EA	1
106	1080-11-34	Fixtures, F&I, 6", Gate Valve Assembly (Cast Iron) (250 PSI)	EA	11
107	1080-11-35	Fixtures, F&I, Blowoff Assembly	EA	6
108	1080-11-43	Fixtures, F&I, Solid Sleeve, 8"	EA	2
109	1080-11-44	Fixtures, F&I, 8", Gate Valve Assembly (Cast Iron) (250 PSI)	EA	9
110	1080-11-44	Fixtures, F&I, 10", Gate Valve Assembly (Cast Iron) (250 PSI)	EA	1
111	1080-11-46	Fixtures, F&I, 8", Air Release Valve Assembly (150 PSI)	EA	5
112	1644-13	Fire Hydrant Assembly, F&I, Standard, 6"	EA	7

SIGNING AND PAVEMENT MARKING				
BID ITEM	FDOT ITEM	DESCRIPTION	UNIT	QTY.
113	700-20-11	R1-1 (30"x30") (Stop)	AS	5
114	700-20-11	R2-1 (24"x30") (Speed Limit)	AS	4
115	700-20-11	R3-16 (24"x30") (Bike Lane Ahead)	AS	2
116	700-20-11	R3-16A (24"x30") (Bike Lane Ends)	AS	2
117	700-20-11	R3-7R (30"x30") (Right Lane Must Turn Right)	AS	6
118	700-20-11	R4-7 (24"x30") (Keep Right)	AS	2
119	700-20-11	S1-1 (30"x30") (Watch for Children)	AS	1
120	700-20-11	W3-3 (30"x30") (Signal Ahead)	AS	1
121	700-20-40	Sign Single Post, Relocate	AS	7
122	705-10-2	Delinicator, Double Unit	EA	10
123	706-3	Bi-Dir Yellow RPM's	EA	222
124	706-3	Bi-Dir W/R RPM's	EA	343
125	710-11-190	Reflective Paint (Island Nose) (White)	SF	8
126	710-12-190	Reflective Paint (Island Nose) (Yellow)	SF	113
127	711-11-160	Pavement Messages, Thermoplastic (Bike Lane Markings)	EA	13
128	711-11-160	Pavement Messages, Thermoplastic (School)	EA	1
129	711-11-160	Pavement Messages, Thermoplastic (Only)	EA	5
130	711-11-170	Directional Arrows, Thermoplastic	EA	41
131	711-11-131	Skip Traffic Stripe, 10'-30' White, Thermoplastic	GM	1,288
132	711-11-241	Skip Traffic Stripe, 10'-30' Yellow, Thermoplastic	LF	106
133	711-11-141	Skip Traffic Stripe, 2'-4' White, Thermoplastic	LF	218
134	711-11-123	Solid Traffic Stripe, 12" White, Thermoplastic (Crosswalk)	LF	1,521
135	711-11-124	Solid Traffic Stripe, 18" White, Thermoplastic (Chevron)	LF	28
136	711-11-125	Solid Traffic Stripe, 24" White, Thermoplastic (Stop Bar)	LF	343
137	711-11-224	Solid Traffic Stripe, 18" Yellow, Thermoplastic (Chevron)	LF	165
138	711-11-111	Solid Traffic Stripe, 6" White, Thermoplastic	NM	1,792
139	711-11-211	Solid Traffic Stripe, 6" Yellow, Thermoplastic	NM	1,567

PAY ITEMS FOOTNOTES

SPEC. PROV. SEE SPECIAL PROVISIONS IN CONTRACT DOCUMENTS FOR DESCRIPTION OF WORK FOR THIS PAY ITEM.

104-13-1 BASED ON REPLACEMENT EVERY 12 MONTHS

110-1-1 INCLUDES COST FOR CLEARING AND GRUBBING REMOVAL OF ALL ABOVE GROUND ITEMS LOCATED ON ±5.5 ACRE AREA LOCATED SOUTH OF PROPOSED POND 3

400-1-15 INCLUDES 20 CY FOR MISCELLANEOUS CONSTRUCTION, AS DIRECTED BY THE ENGINEER.

522-1 ADDITIONAL CONCRETE UNDER HANDRAIL SHALL BE INCLUDED IN THE CONTRACT UNIT PRICE FOR 4" SIDEWALK, S.Y.

536-73 EXISTING GUARDRAIL TO BE DISMANTLED AND STOCKPILED WITHIN THE RIGHT-OF-WAY IN AREAS DESIGNATED BY THE ENGINEER FOR REMOVAL BY MANATEE COUNTY MAINTENANCE FORCES.

530-3-4 BASED ON 1.5' THICKNESS

639-2-1 PAYMENT SHALL BE BASED ON THE LINEAR FOOT OF A SINGLE CONDUCTOR

THE CONTRACTOR WILL MAKE WHATEVER ADDITIONAL GEOTECHNICAL INVESTIGATION HE FEELS NECESSARY TO DETERMINE HIS BID.

DESIGNED BY	SRR	DATE	REVISION DESCRIPTION & DATE	BY	NO.
CHECKED BY	BDG	DATE			
DRAWN BY	PWJ	DATE			
CHECKED BY	JDT	DATE			
SUPERVISED BY	JEFFREY D. TRIM, PE #4206				



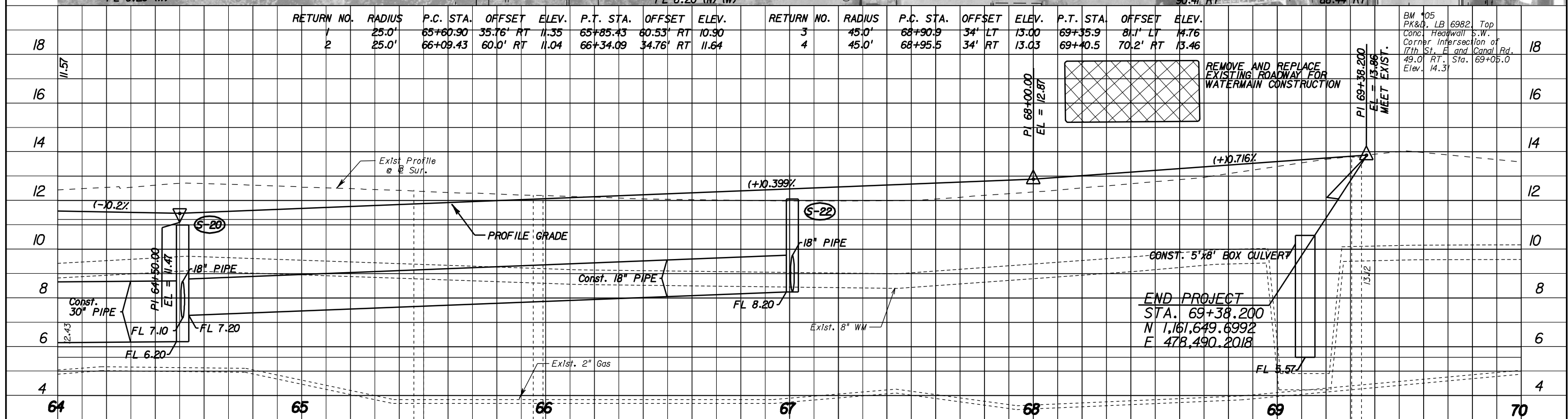
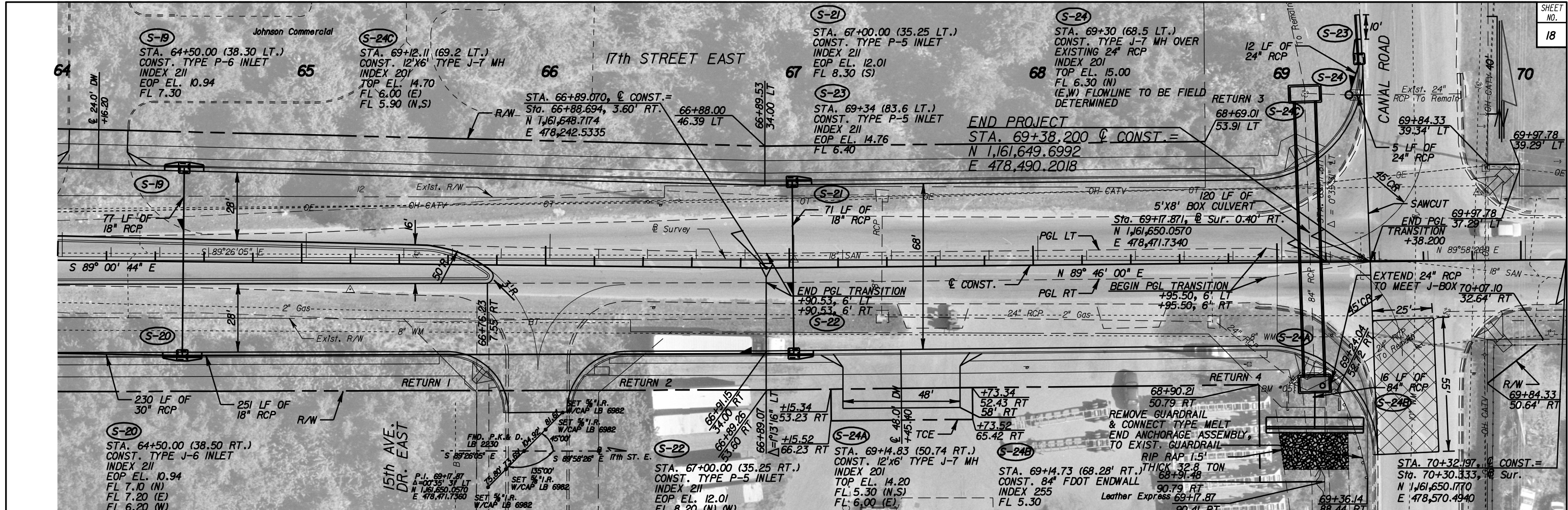
17th STREET EAST
FROM US 41 TO EAST OF CANAL ROAD
MANATEE COUNTY, FLORIDA



www.wadetrtrim.com
8745 Henderson Road, Suite 220, Tampa, FL 33634
813.882.8366 FAX 813.884.5990
Engineer of Record: Jeffrey D. Trim, PE No. 42106
Certificate of Authorization No. 3952

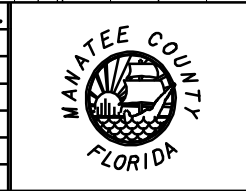
ENGINEER
Jeffrey D. Trim, PE No. 4206
Proj. No. 6035260
Dwg. Date DECEMBER 12, 2008

SUMMARY OF PAY ITEMS



DESIGNED BY	SRR	DATE
CHECKED BY	BDG	DATE
DRAWN BY	PNJ	DATE
CHECKED BY	JDT/PJS	DATE
SUPERVISED BY	JEFFREY D. TRIM, PE 42106	

REVISION	DESCRIPTION & DATE	BY	NO.



17TH STREET EAST
FROM US 41 TO CANAL ROAD
MANATEE COUNTY, FLORIDA

WADETRIM
www.wadetrtrim.com
8745 Henderson Road, Suite 220, Tampa, FL 33634
813.882.8366 FAX 813.884.5990
Engineer of Record: Jeffrey D. Trim, PE No. 42106
Certificate of Authorization No. 3952

ENGINEER
Jeffrey D. Trim, PE No. 42106

Proj. No. 6035260
Dwg. Date DECEMBER 12, 2008
PLAN AND PROFILE

DESIGN FILE: P:\Mta20057\01m\CADD\data\dwg\p\prr-d07.dgn PLOT FILE: _PLOTFILE_ PLOT DATE: 2/4/2009